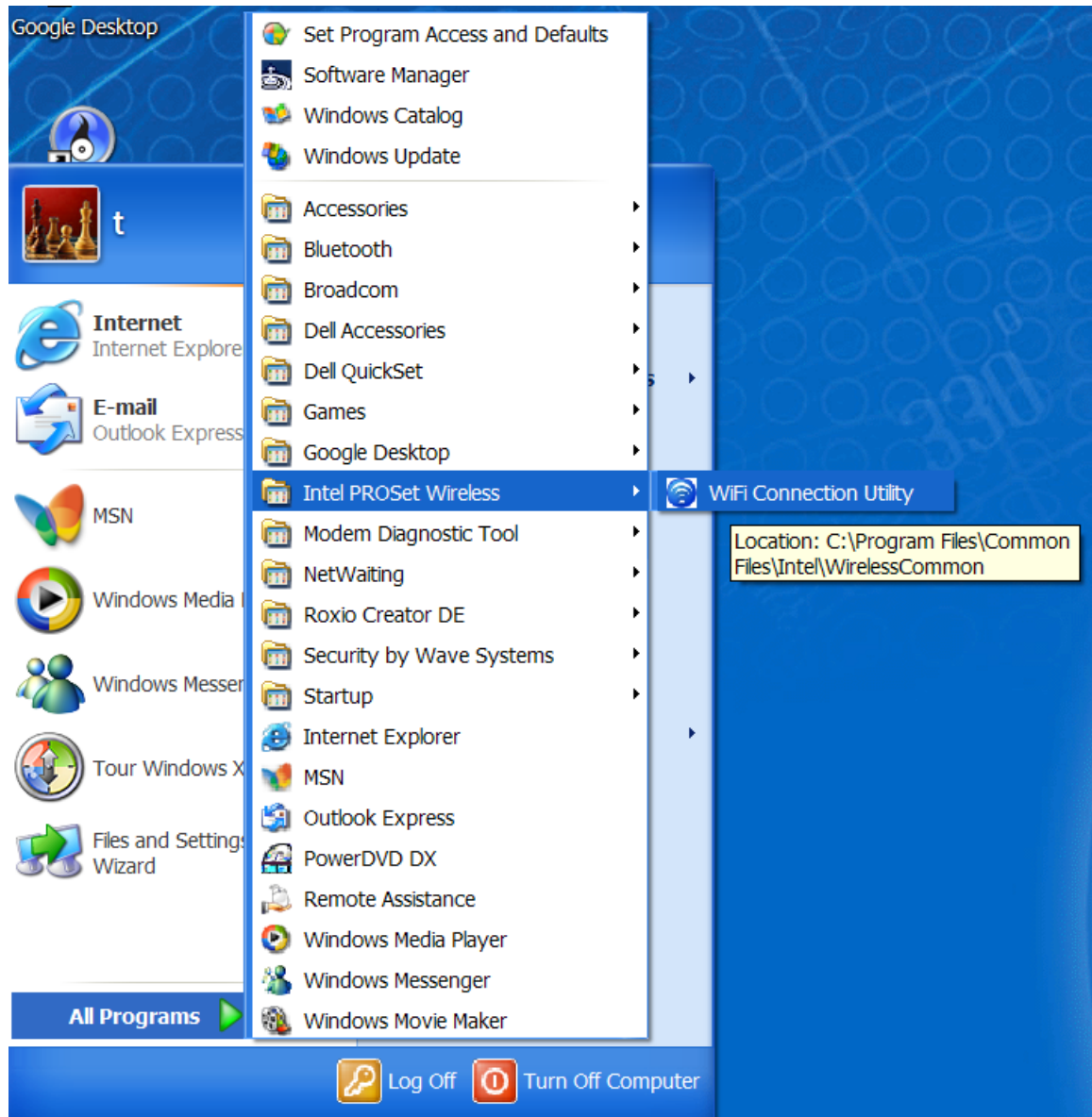


VERIFY THAT THE INTEL PROSET/WIRELESS SOFTWARE IS MANAGING YOUR WI-FI CONNECTION

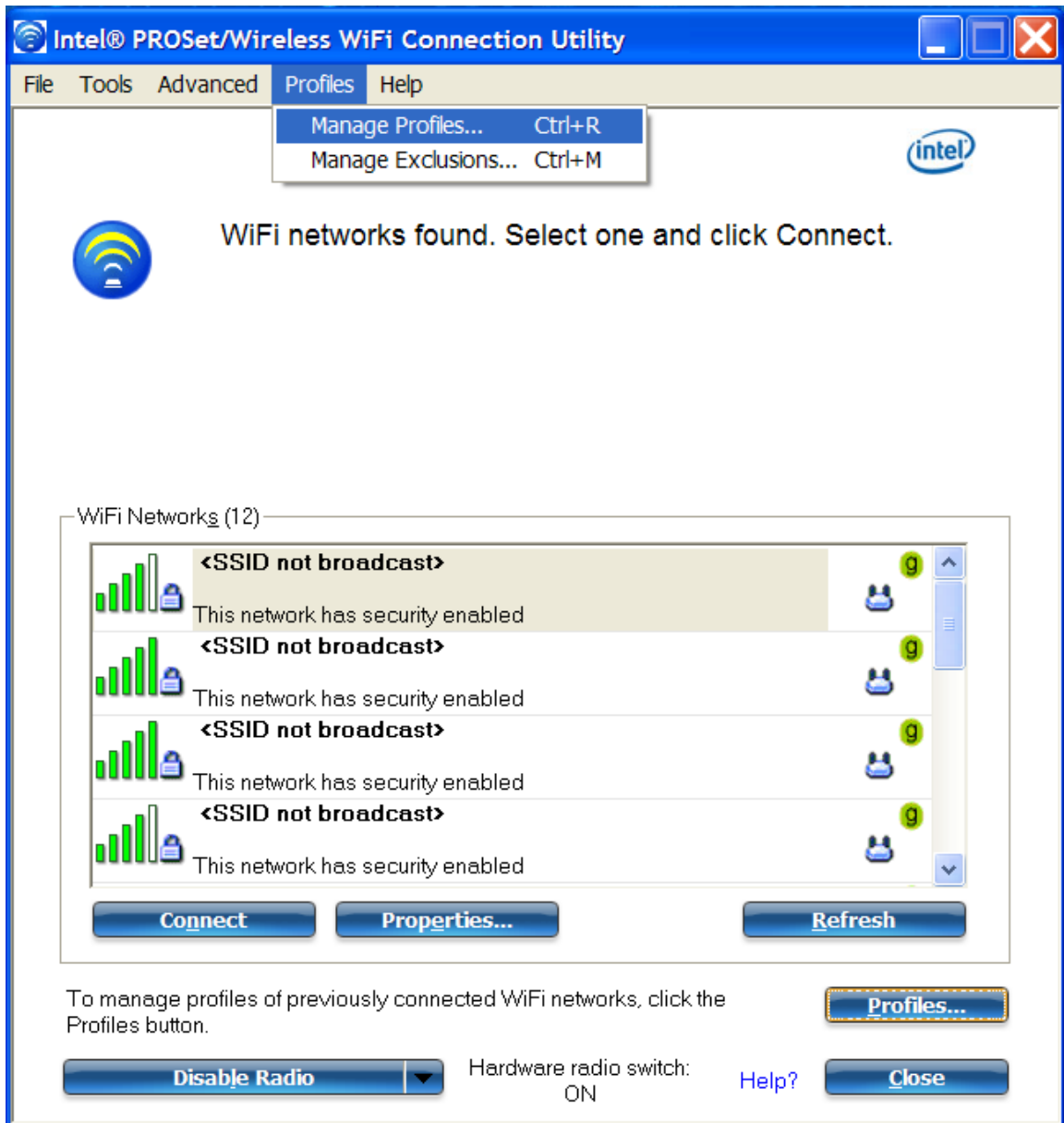
1) Go to the Start Menu > Programs > Intel ProSet Wireless and **Click** on WiFi Connection Utility



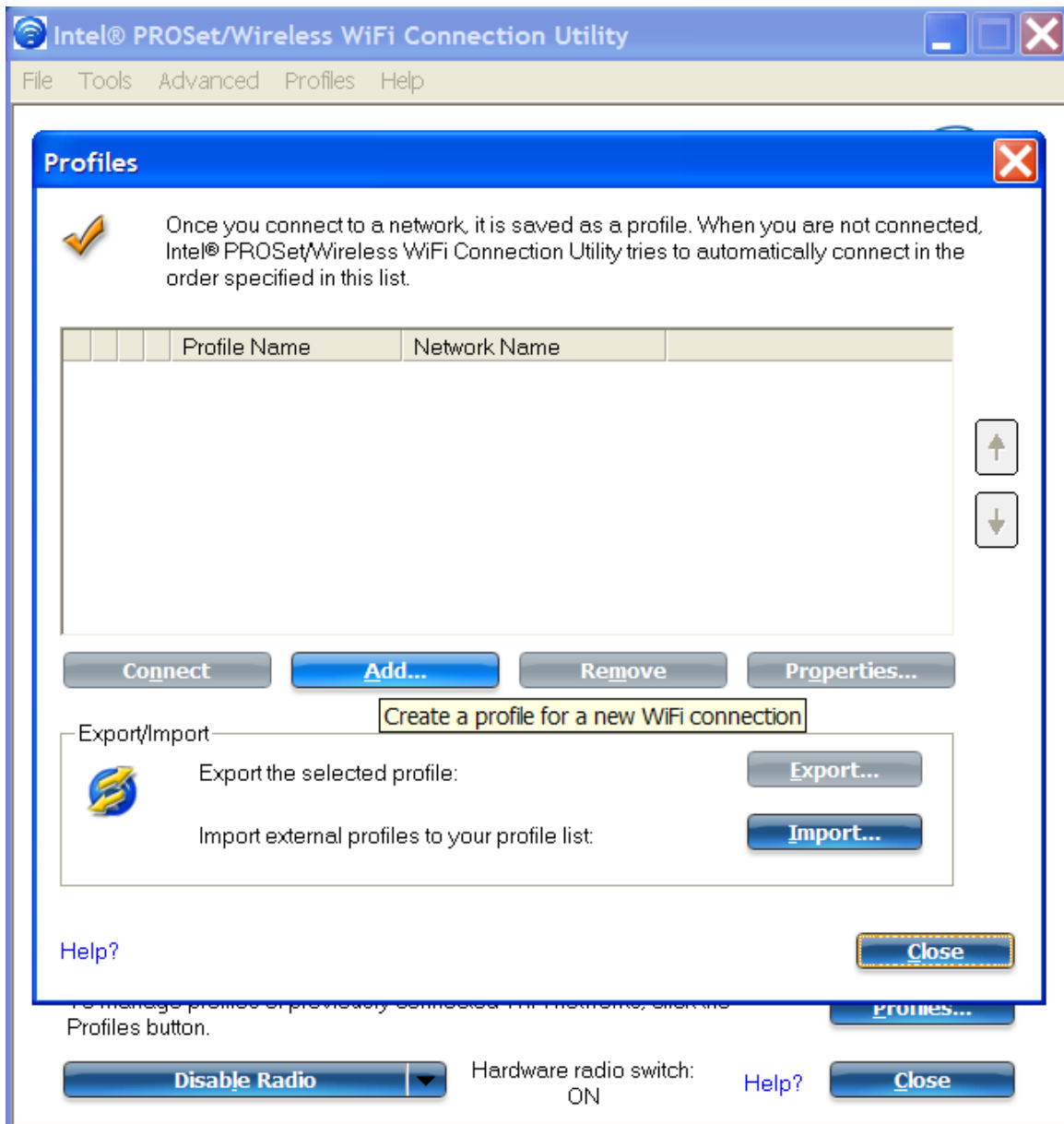
WIRELESS NETWORK CONFIGURATION

NOTE: Before configuring the wireless connection you must go to an area that has Wireless access.

- 2) In the Intel PROSet Wireless dialog box, click on **Profiles** in the menu bar, and select **Manage Profiles**.



3) In the **Profiles** dialog box click on the **Add** button.



- 4) In the **Create WiFi Profile** dialog box, the following information is required under the **General Settings** heading:
- I. Enter **Jefferson** in the **Profile Name:** field
 - II. Enter **wireless100** in the **Wireless Network Name (SSID):** field
 - III. Click on the **Next >>** button

Create WiFi Profile

Profile Name: Jefferson

General Settings

Security Settings

General Settings

Profile Name: Jefferson

WiFi Network Name (SSID): wireless100

The Profile Name is your name for the network. Example: Home or Office. The WiFi Network Name (SSID) is a unique identifier that differentiates one WiFi network from another.

Operating Mode:

- Network (Infrastructure) - Connect to WiFi networks and/or the Internet.
- Device to Device (Ad Hoc) - Connect directly to other computers.

Advanced... Help? << Back Next >> OK Cancel

- 5) In the WiFi Profile Properties – Jefferson dialog box, configure the following settings.
- I. **Enterprise Security** is selected.
 - II. Network Authentication: **WPA2- Enterprise**.
 - III. Data Encryption: **AES**
 - IV. Authentication Type: **PEAP**
 - V. Enter your campus key in the **User Name:** field
 - VI. Enter your JeffMail password in both the **Password:** and **Confirm password:** fields.
 - VII. Make sure the domain field is **empty**.
 - VIII. Click **Next >>** to continue.

The screenshot shows the 'Create WiFi Profile' dialog box with the 'Security Settings' tab selected. The profile name is 'Jefferson'. The 'Enterprise Security' radio button is selected. The 'Network Authentication' is set to 'WPA2 - Enterprise' and 'Data Encryption' is set to 'AES - CCMP'. The 'Enable 802.1X' checkbox is checked. The 'Authentication Type' is set to 'PEAP'. A 'Cisco Options...' button is visible. The 'Step 1 of 2 : PEAP User' section is expanded, showing 'Authentication Protocol' set to 'MS-CHAP-V2' and 'User Credentials' set to 'Use the following'. The 'User Name' field contains 'XXXX000', 'Domain' is empty, 'Password' and 'Confirm Password' fields are empty, and 'Roaming Identity' is set to 'abcdefgh'. At the bottom, there are buttons for 'Advanced...', 'Help?', '<< Back', 'Next >>', 'OK', and 'Cancel'.

Create WiFi Profile

Profile Name: Jefferson

General Settings

Security Settings

PEAP User

PEAP Server

Security Settings

Personal Security Enterprise Security

Network Authentication: WPA2 - Enterprise

Data Encryption: AES - CCMP

Enable 802.1X

Authentication Type: PEAP **Cisco Options...**

Step 1 of 2 : PEAP User

Authentication Protocol: MS-CHAP-V2

User Credentials: Use the following

User Name: XXXX000

Domain:

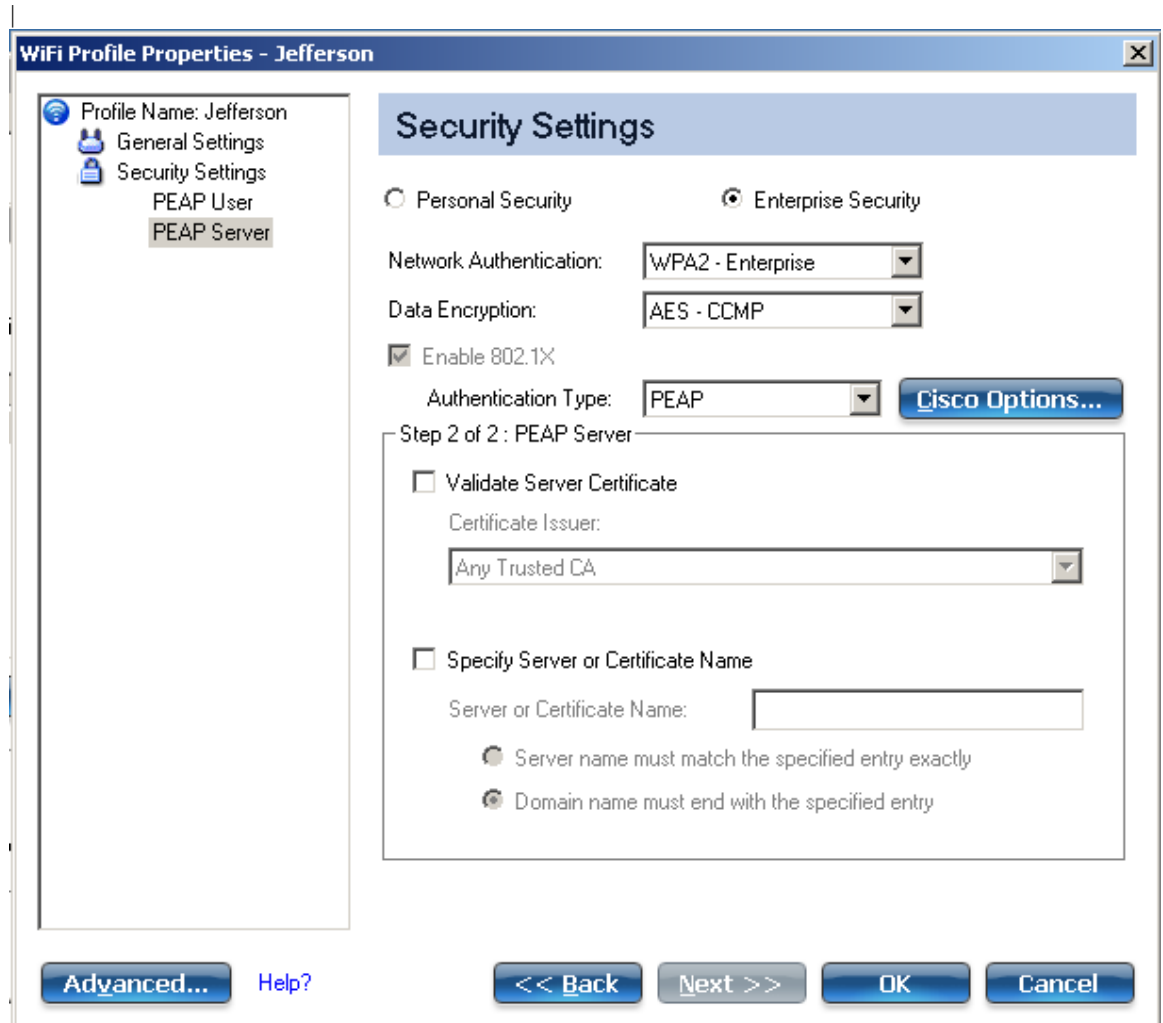
Password:

Confirm Password:

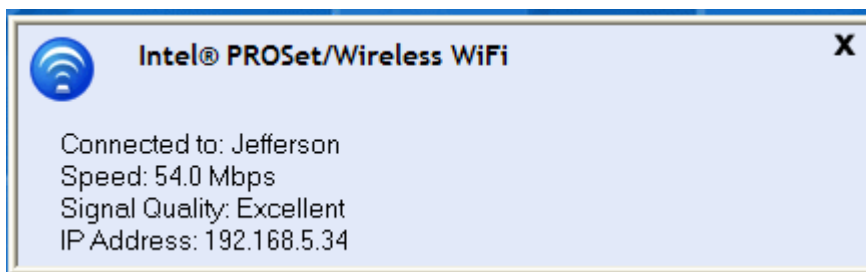
Roaming Identity: abcdefgh

Advanced... [Help?](#) << Back Next >> OK Cancel

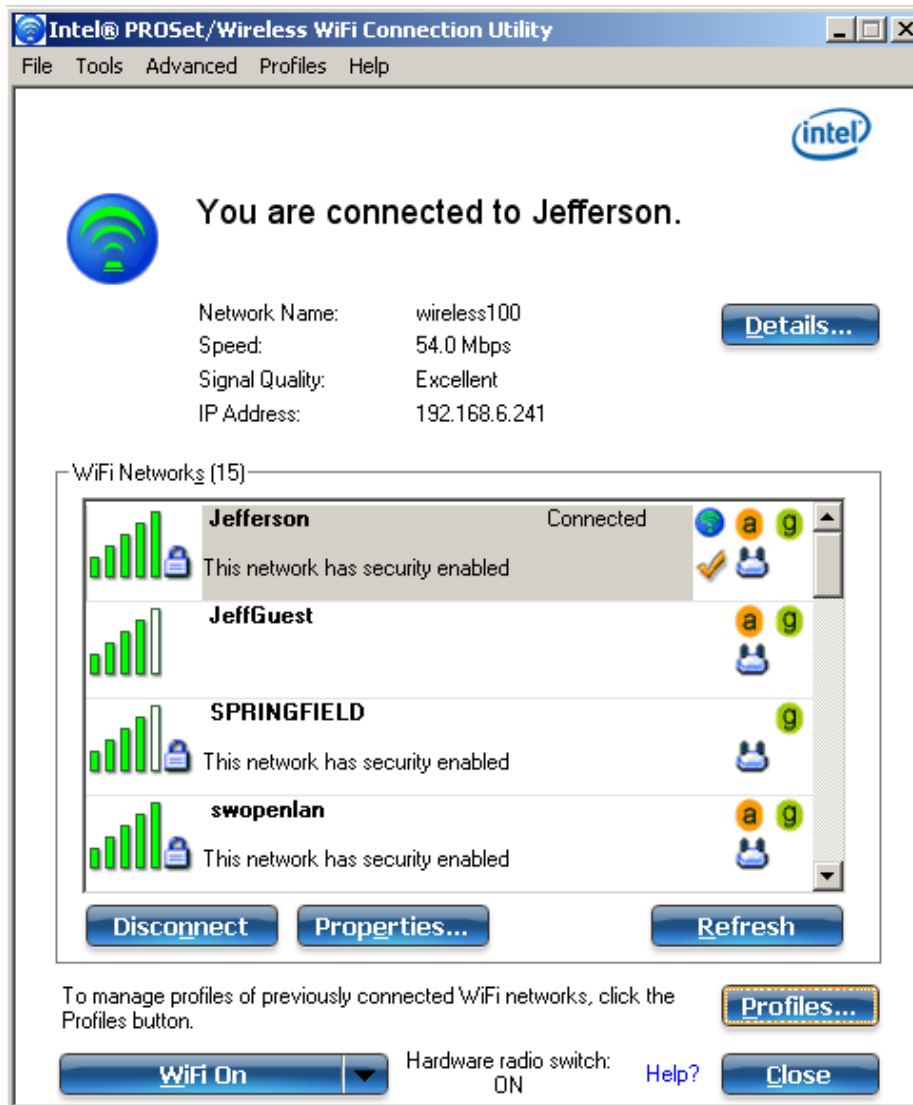
- 6) In the Create **WiFi Profile Properties** dialog box, configure the following settings.
- I. Uncheck the **Validate Server Certificate** checkbox.
 - II. Click the **OK >>** button.



- 7) The Intel Wireless icon in your notification Area should turn green, yellow, or red. A status box should appear.



8) The Intel **PROSet/Wireless** dialog box should display “You are connected to Jefferson.”



9) If you experience issues connecting, please recheck your settings.

- I. In the Intel PROSet/Wireless dialog box, click on the **Profiles...** button select **Jefferson** from the list in the **Profiles** dialog box, and then click on the **Properties...** button. Verify your settings in the **General Settings** section. Click on **Security settings** and make sure that the settings, including your username and password, are correct.