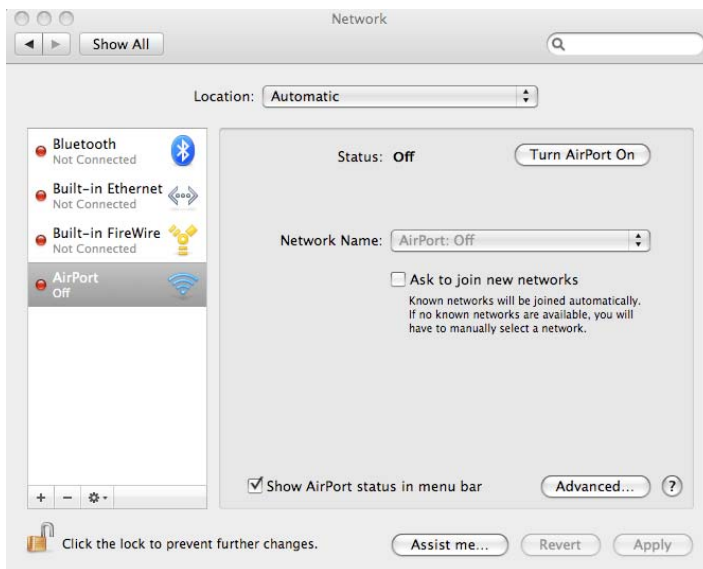


Instructions for OSX (10.5.3+) Leopard

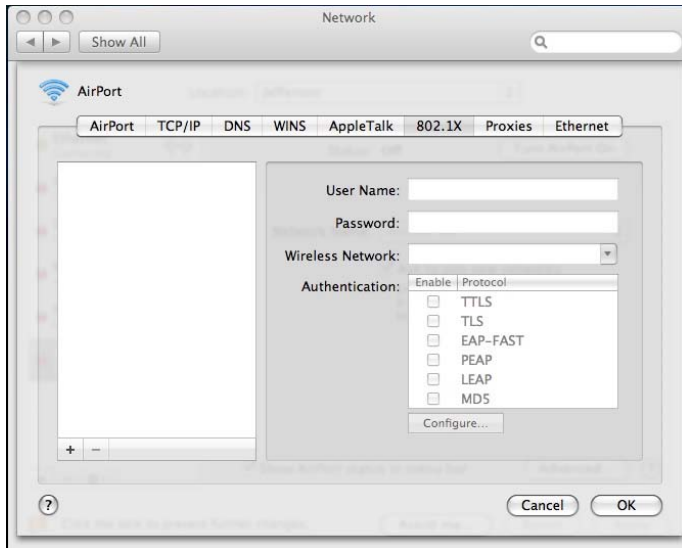
- 1) Go to the Apple Menu, and select System Preferences
- 2) Click the Network system preference icon in the third row



- 3) Click AirPort on the left, and click Advanced... at the bottom right



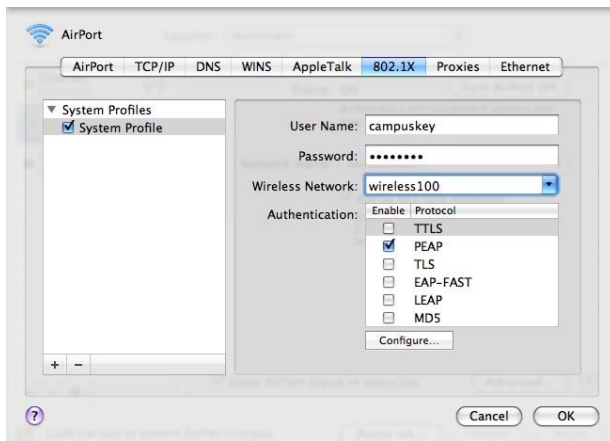
4) Click the 802.1X tab



5) Click the Plus sign in the bottom left corner and select System profile.

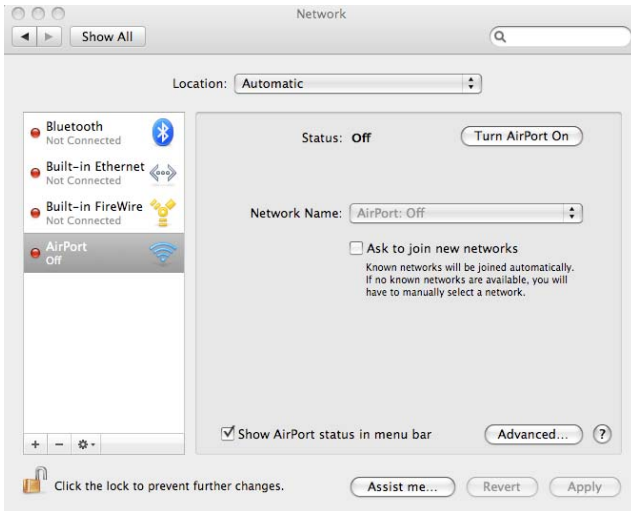
6) On the right, enter the following information:

- * User Name: enter your campus key for username
- * Password: enter your password
- * Wireless Network: wireless100
- * Authentication: Ensure that only PEAP is checked

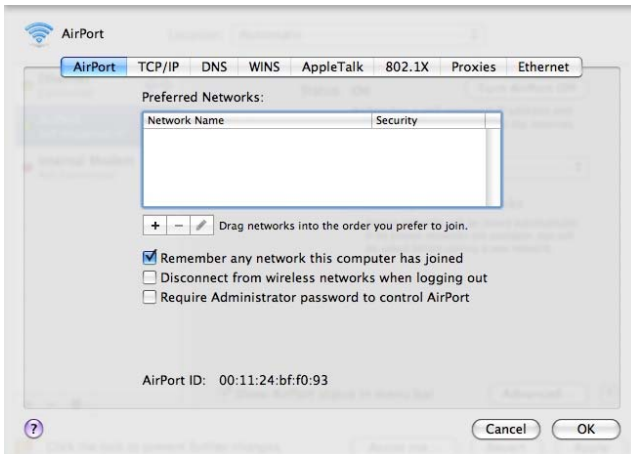


*Click OK which should bring you back to the network system panel.

7) Click on Apply and after that click on the advanced button at the bottom of the window

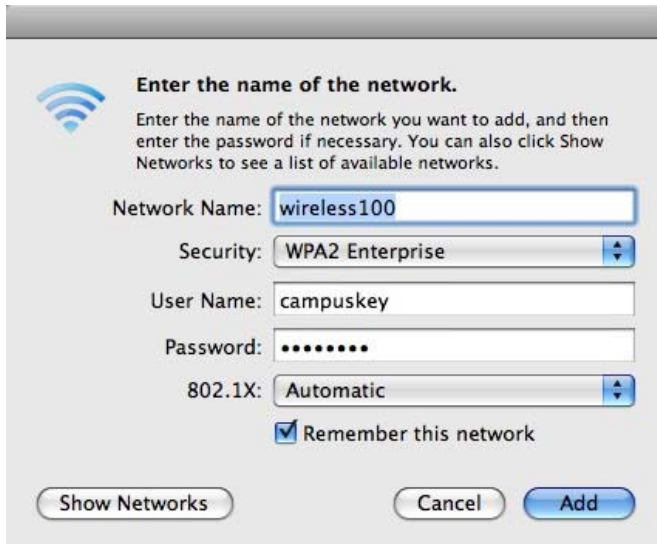


8) Click the + Button



10) Enter in the following information (some fields may already be filled):

- * Network Name: wireless100
- * Security: WPA2 Enterprise
- * User Name: your campus key
- * Password: Your password
- * 802.1X: WPA: Automatic
- * Ensure the "Remember this network" checkbox is checked
- * Click Add



Enter the name of the network.
Enter the name of the network you want to add, and then enter the password if necessary. You can also click Show Networks to see a list of available networks.

Network Name:

Security:

User Name:

Password:

802.1X:

Remember this network

11) Click OK on the new window.

12) Click the Apply button at the bottom.

The system should log in for you.

If you do not connect right away, click the “turn airport off” and then click again to turn it back on.

If you have not logged in before or if the Certificate has been updated, you will be presented with this window after you have connected to the wireless network.

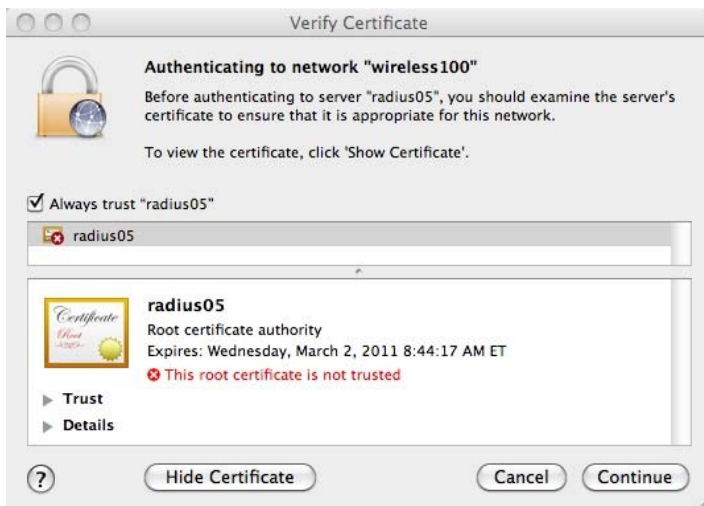


Verify Certificate

Authenticating to network "wireless100"
Before authenticating to server "radius06", you should examine the server's certificate to ensure that it is appropriate for this network.
To view the certificate, click 'Show Certificate'.

There are two Certificate servers so you will have to do this twice, once for each server once a year. The names of the servers are “radius5” and “radius6”. Click Show Certificate.

Check the Always trust "radius05/06" Box in the middle.



Click the continue button and you will be allowed on the network.