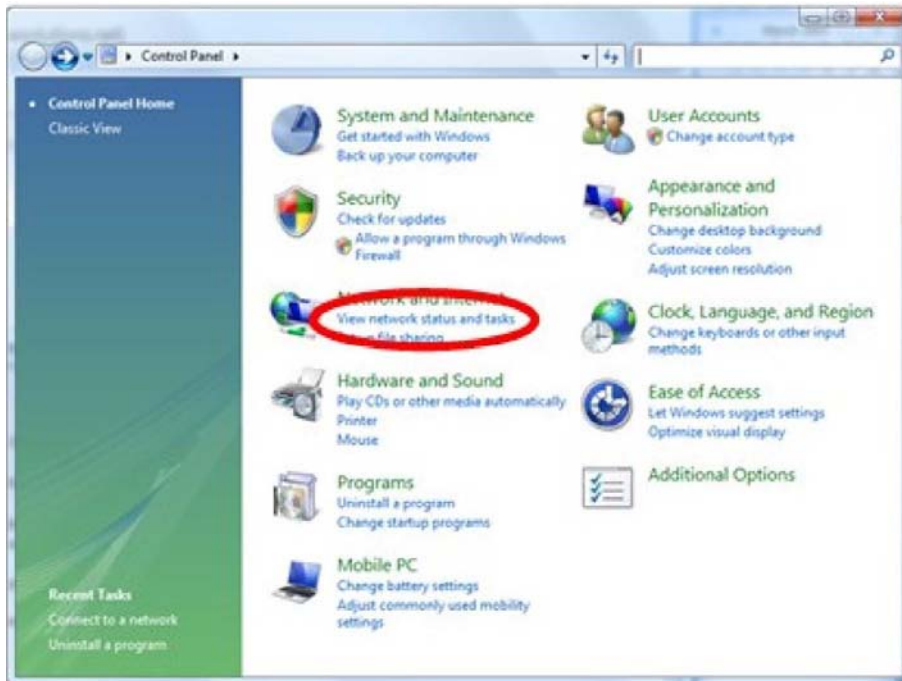


Wireless Configuration Instructions: Windows Vista / 7

WIRELESS NETWORK CONFIGURATION

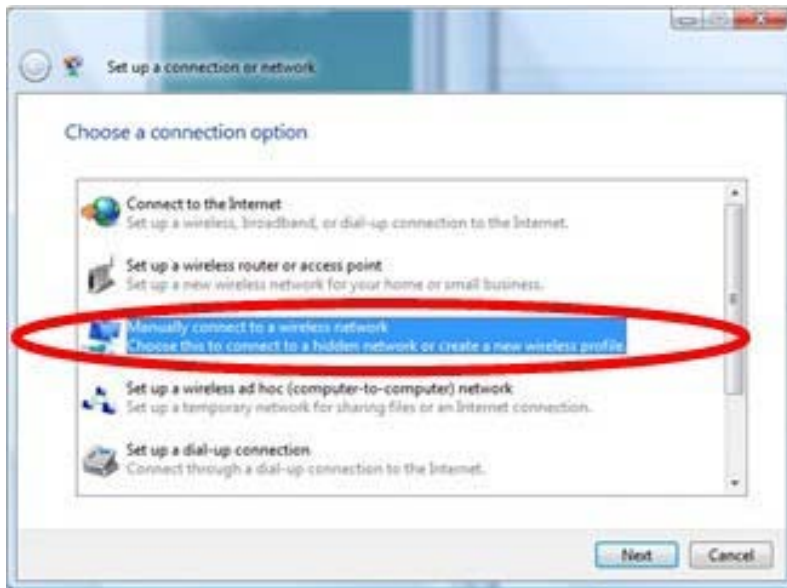
1. Click on your Windows orb (Start menu.)
2. Click on “Control Panel”.
3. Click “View network status and tasks” under “Network and Internet”.



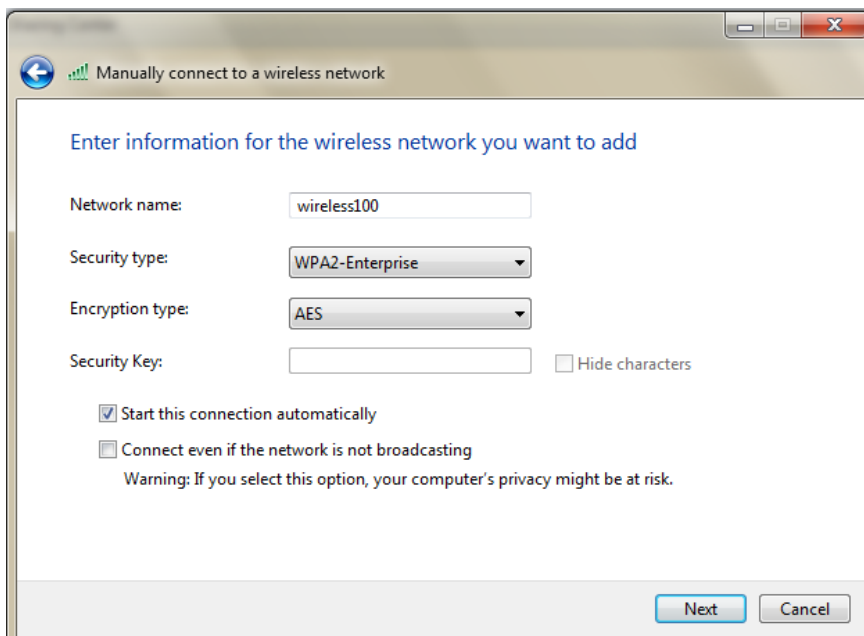
4. Click on “Set up a connection or network” from the left hand side of the **Network and Sharing Center**.



5. Click “Manually connect to a wireless network” from the **Choose a connection option** dialog box.

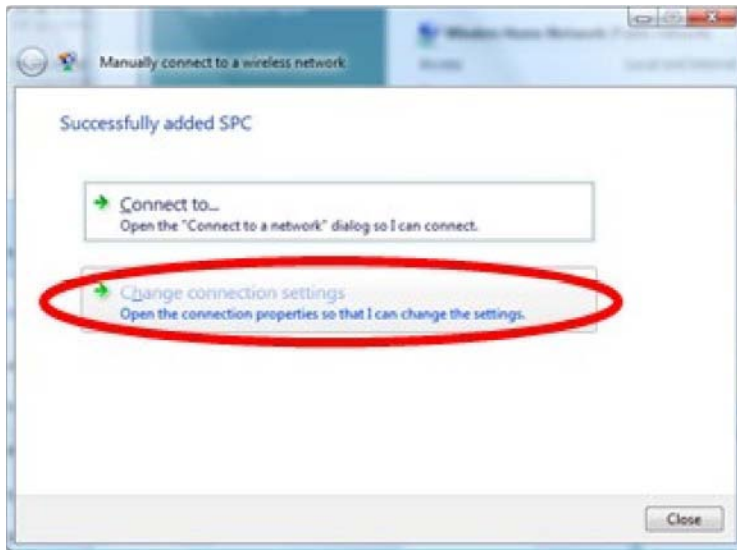


6. Click on the **Next** button.
7. Enter the following information in the **Manually connect to a wireless network** dialog box:
 - a) Network name: wireless100
 - b) Security type: WPA2-Enterprise
 - c) Encryption type: AES

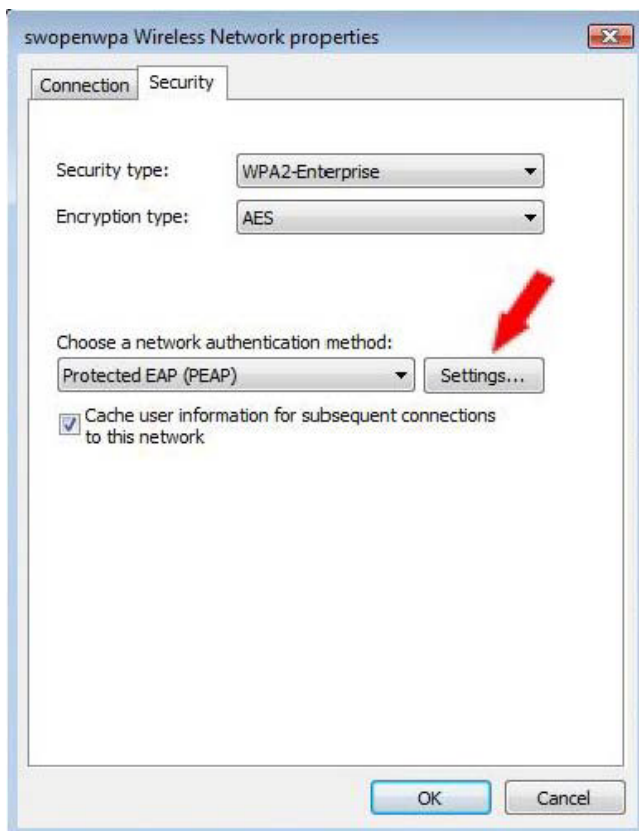


8. Click on the **Next** button

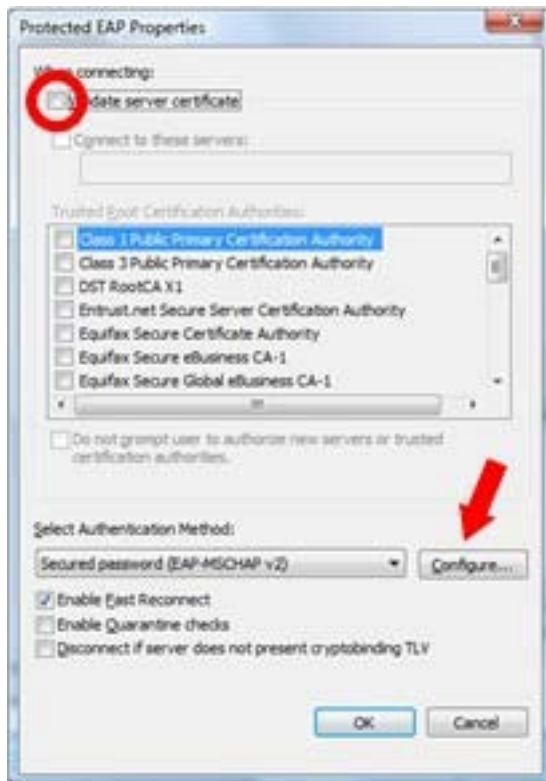
9. In the **Successfully added wireless100** dialog box, click on “Change connection settings”:



10. In the **wireless100 Wireless Network properties** dialog box, click the **Security** tab then click on the **Settings...** button.



11. In the **Protected EAP Properties** dialog box, click to remove the check mark in the **Validate server certificate** check box.



12. Click the **Configure...** button.

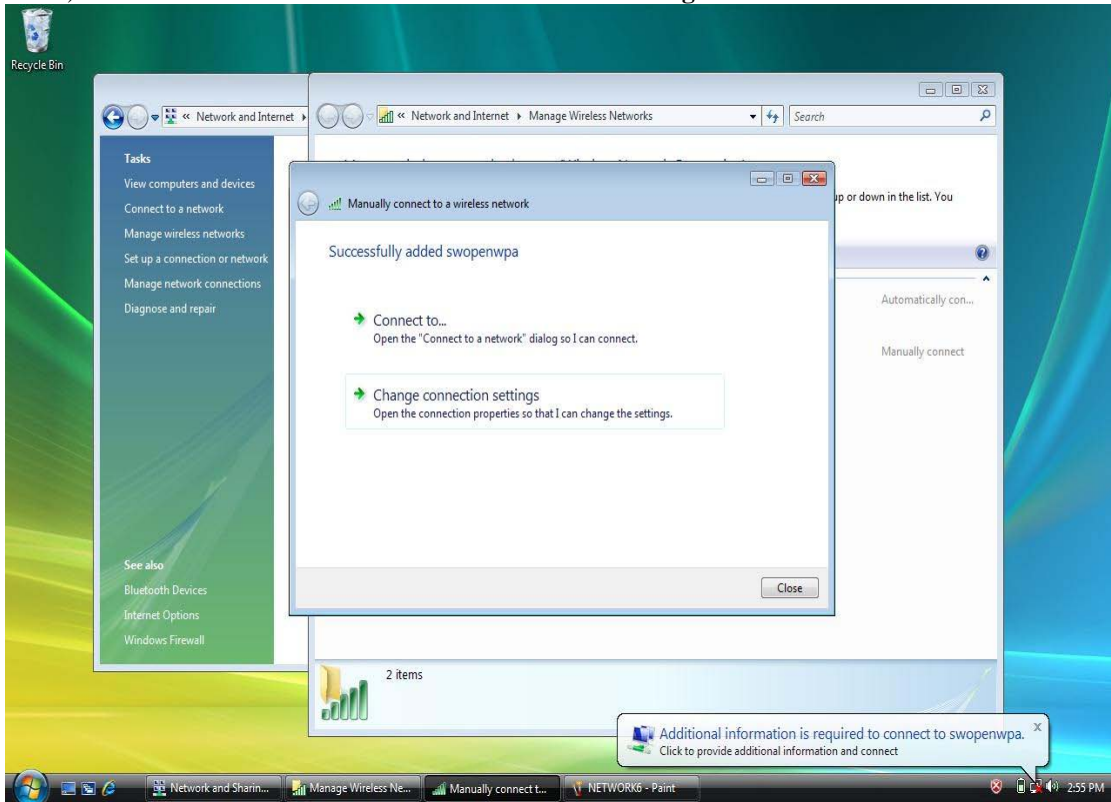
13. In the **EAP MSCHAPv2 Properties** dialog box, click to remove the check mark in the **Automatically use my Windows logon name and password** check box.



14. Click on the **OK** button.

15. Complete adding the wireless network configuration by the following:

- a) Click on the **OK** button in the **Protected EAP Properties** dialog box.
- b) Click on the **OK** button in the **wireless100 Wireless Network properties** dialog box.
- c) Click on the **Close** button in the **Manually connect to a wireless network** dialog box.
- d) Click on the **Close** button in the **Network and Sharing Center** window.



16. When your computer is in range of the **wireless100** wireless network you will get a popup at the bottom of your screen requesting additional information. Click this popup dialog.

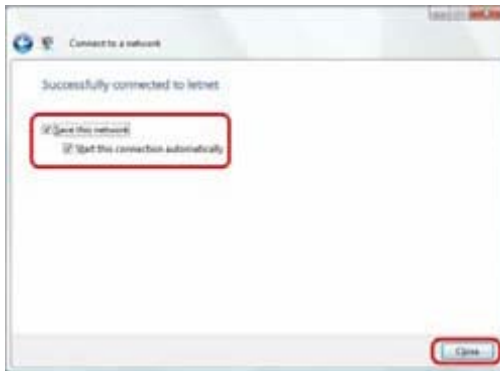
17. You will be prompted to enter your credentials for the **wireless100** network. In the **Enter Credentials** dialog box, enter your campus key in the **User name** field and your password in the **Password:** field. Leave the **Logon domain:** field empty. Click on the **OK** button.



18. You will be challenged to accept the server certificate. The server certificate will list the server name of RELIANT. Accept this certificate by clicking on the **OK** button in the **Validate Server Certificate** dialog box.



19. In the **Connect to a network** dialog box, ensure that there are check marks in the **Save this network** and **Start this connection automatically** check boxes. If not, click in them to insert check marks.



20. Click on the **Close** button.
21. Your computer will then authenticate to the **wireless100** network and you will have access to all network and Internet resources. Your logon information will be saved automatically. You will not have to enter this information again until your password changes or expires.