

## Jefferson Conference on Pancreatic Cancer Highlights Latest Treatments and Research



Don Walker Photography

From left, Walter J. Curran Jr., MD, Professor and Chair of Radiation Oncology, JMC, and Clinical Director, KCC; Ernest (Gary) Rosato, MD, Clinical Associate Professor of Surgery, JMC; Elizabeth Thompson, Director of Research and Scientific Affairs, PanCan; David Tuveson, MD, PhD, Assistant Professor of Medicine and Cancer Biology, University of Pennsylvania; Ralph H. Hruban, MD, Professor of Pathology and Oncology at The Johns Hopkins University School of Medicine; and Charles J. Yeo, MD, the Samuel D. Gross Professor and Chair of Surgery at JMC.

Pancreatic cancer experts from around the country gathered at the Kimmel Cancer Center (KCC) at Jefferson to discuss the latest in surgery, animal models, clinical trials, treatments and immunotherapy at the 2006 "Scientific and Clinical Update on Pancreatic Cancer," hosted by Jefferson.

Conference speakers stressed an optimistic theme: Pancreatic cancer is no longer the immediate death sentence that most people think it is.

"The public hears 'pancreatic cancer' and thinks there's little hope and there isn't much to do," says pancreatic cancer surgeon

Charles J. Yeo, MD, the Samuel D. Gross Professor and Chair of Surgery at Jefferson Medical College (JMC). "The good news is, with new imaging techniques, better early detection, improved screening of high-risk groups, and new therapies on the horizon, we're actually making great progress when it comes to pancreatic cancer."

### Latest Clinical Trial Results

Dr. Yeo spoke about some of the latest results from recent clinical trials involving pancreatic cancer surgery. Evidence from one trial, he says, shows that a reduced version of the standard Whipple operation

may be just as effective in treating the disease. The so-called "mini-Whipple" is somewhat less complicated and less of a risk to patients.

Guest speakers included Elizabeth Jaffee, MD, the Dana and Albert "Cubby" Broccoli Professor in Oncology and Pathology at Johns Hopkins University, who discussed one of the most exciting areas of pancreatic cancer research: immunotherapy, or using the body's own immune system to fight cancer. Dr. Jaffee and her colleagues have recently reported encouraging early results of a vaccine for pancreatic cancer.

"The recruitment of Dr. Yeo, a national leader in pancreatic cancer surgery, the momentum of a substantial number of new clinical and research recruits, together with the talent already here at Jefferson, provides a unique opportunity for the Kimmel Cancer Center and Jefferson to take a national leadership position in diagnosis and new treatments for pancreatic cancer," says Richard Pestell, MD, PhD, Director of the Kimmel Cancer Center at Jefferson and Professor and Chair of Cancer Biology at JMC.

Pancreatic cancer, the fifth-leading cause of cancer death in the United States, takes some 30,000 lives a year.

To see the conference agenda, visit [www.kimmelcancercenter.org/symposium](http://www.kimmelcancercenter.org/symposium)

## Jefferson's Generosity Again Welcomes Spring Daffodils to Help Fight Cancer



Don Walker Photography

Joy Graham, center, of JUP Administration, holds vase of daffodils she has just purchased from Jane Barron, JMC '06, at left, as Dorothy Wyszynski looks on.

The Jefferson campus exuded a golden hue in welcoming Spring when more than 10,200 daffodils and nearly 600 potted daffodil bulbs burst into various stages of bloom before being picked up by their purchasers or delivered to patients. The flowers and bulbs thus served as both symbols and tangible evidence of Jefferson employees' annual generosity.

For the 18th straight year, Jeffersonians generously supported the American Cancer Society's (ACS) annual Daffodil Days program that included a Site Sale sponsored by a group of volunteer medical students from the AOA Medical Honors Society (photo).

"In unselfish manner, employees and other members of the community anonymously donated funds to the ACS that were used to purchase Vases of Hope and were distributed to patients at the Kimmel Cancer Center at Jefferson (KCC)," says Dorothy Wyszynski, Assistant to the Administrator of the KCC. She adds confidently, "We will always be Number One!"

The distribution was coordinated by Patricia A. Wallace, Director, Volunteer Services and Brenda Reynolds-Walker, Youth Coordinator, along with Anne Delegowski, RN, MSN, Clinical Nurse Specialist who was quite overwhelmed and impressed by the joy it brought to the patients and clinical areas.

## Observing Heart Failure Awareness Week

During Heart Failure Awareness Week, nursing staff from Jefferson's Advanced Heart Failure and Cardiac Transplant Center unit hosted information tables in the Atrium, answering questions and handing out information to hospital employees about heart failure – its symptoms and risk factors – and the program offered by Jefferson.

Checking out one display are, from left, Mary Vergara, RN, Charge Nurse, 5 West, where heart failure and transplant patients are admitted, George Pereira-Ogan, Administrator, Department of Anesthesiology, and Anne Canny, RN, MSN, Heart Failure Nurse Coordinator.



Robert Neroni Photography

## Observing Doctor's Day 2006

Observing Doctor's Day 2006 are, from left, Thomas J. Lewis, hospital President and CEO; Miriam Schwartz, President of the hospital's Women's Board; and Lewis J. Rose, MD, a medical oncologist who is Clinical Assistant Professor of Medicine, Jefferson Medical College, and President of the hospital's Medical Staff. The United States Congress established Doctor's Day in 1958 to recognize the efforts of physicians on behalf of their patients.



Don Walker Photography

### VITAL SIGNS: FEB 2006

TJUH, Methodist, Geriatric Psychiatry, Jefferson Hospital for Neuroscience

	Budget	Actual	Prior Year
Admissions	3,346	3,363	3,347
Length of Stay	6.35	5.93	6.48
Patient Days	21,259	20,354	21,246
TJUH, Methodist Outpatient Visits	36,757	35,890	36,592
<b>Patient Satisfaction Overall Mean Score (Oct-Dec) 82.0</b>			

## Dennis M. Gross, PhD, Named Associate Dean For Master's Programs



Dennis M. Gross, PhD, has been named Associate Dean for the Master's Programs of the Jefferson College of Graduate Studies (JCGS), James H. Keen, PhD, Dean, JCGS, has announced.

Dr. Gross has long participated as an instructor and course developer for the Master's programs of the College, and has had an adjunct faculty appointment in Jefferson Medical College since 1977.

He comes to Jefferson after a 28-year career at Merck Research Labs, where he has played various roles in drug discovery and development, in strategic planning and operations, and most recently as Senior Director and Head of West Point Business Operations and Planning for Research Operations.

Dr. Gross's office is in M-46 Jefferson Alumni Hall. He can be reached at **215-503-0156** and at [Dennis.Gross@jefferson.edu](mailto:Dennis.Gross@jefferson.edu)

Dr. Keen adds "A special note of gratitude to Dr. Carol Beck, who stepped in to serve as interim director of the programs after Dr. Georganne Buescher passed away unexpectedly in February 2005. Although able to devote only a part of her time to JCGS, Carol was able to very successfully juggle this responsibility and advance the Master's programs of the College along with her many teaching and research obligations. We look forward to her continued work with Dennis and the Master's programs as Assistant Dean in the College."

## Two Jefferson Arthritis Researchers Honored



### Sergio A. Jimenez, MD

Dr. Jimenez, The Dorrance H. Hamilton Professor of Medicine, Professor of Medicine and Molecular Pharmacology, and Director, Division of Rheumatology, Department of Medicine, received the Osteoarthritis Research Society International (OARSI) Basic Science Award at the OARSI World Congress in Boston.

Dr. Jimenez was awarded the honor because of his important contributions to osteoarthritis research during the last two decades and, particularly, for the study of regulation of cartilage gene expression by inflammatory cytokines.



### Charlene J. Williams, PhD

Dr. Williams, Professor of Medicine and Associate Director of Research, Division of Rheumatology, Department of Medicine, received the Arthritis Foundation of Eastern Pennsylvania's Stewart J. McCracken Award at the Arthritis Foundation's Evening of Honors in Philadelphia.

The Stewart J. McCracken Award is presented annually to the individual who receives the highest-rated research project in the Philadelphia area. Pursuing her interest in inherited forms of arthritis, Dr. Williams' laboratory discovered that one type of inherited arthritis, called familial chondrocalcinosis, is caused by mutations in a novel gene.

## Medical Students' Generosity Aids 9-Year-Old Victim of Violence in Africa

Thanks to the generosity of Jefferson Medical College students, a 9-year-old girl, severely burned when rebels set her home afire in Northern Uganda, now has a better chance for a life of hope.

Students from JeffHEALTH (Helping Africans Link to Health) and Physicians for Social Responsibility (PSR) personally contributed or raised from classmates \$200 to help defray pre- and post-operative medication costs for Jennifer Anyayo. Many other donors made plastic surgery in the United States possible for Jennifer who now lives in Philadelphia.

You can read her story at [go.philly.com/Jennifer](http://go.philly.com/Jennifer)

To help more, email [ellen.plumb@jefferson.edu](mailto:ellen.plumb@jefferson.edu) or Carolyn Davis at [cdavis@phillynews.com](mailto:cdavis@phillynews.com)

### In Memoriam

#### Thomas Brennan

The Jefferson community mourns the death February 13 of Thomas "Tommy" Brennan, 53, a Maintenance Mechanic in Facilities Services and a member of Teamsters Local 830. Mr. Brennan began working at Jefferson on December 29, 1975.

## Emergency Medicine's Theodore A. Corbin, MD, Named One of Philadelphia Business Journal's '40 Under 40'



Jefferson Emergency Medicine physician Theodore A. Corbin, MD, has been named one of the *Philadelphia Business Journal's* "40 Under 40" for

2006, a high-profile community honor.

The 16th annual competition winners are 40 individuals under age 40 who are proven performers in their respective industries and communities. These dynamic up-and-comers have shaped our community in ways that have made Greater Philadelphia a better place to live.

### About Ted Corbin, MD, FACP

Dr. Corbin is Assistant Director of the Residency Program in the Department of Emergency

Medicine. As an emergency room physician, he witnesses first-hand the devastating toll created by youth violence, and is among the public health professionals who have dedicated their lives to doing something about it.

Born and reared in Philadelphia, he is a proud product of the city's vibrant African-American community who has emerged as a leader in the cause of preventing the kind of street brutality he saw as a child and now sees in the Emergency Department.

As Clinical Instructor in Emergency Medicine at Jefferson Medical College, Dr. Corbin serves along with other physicians, public health professionals, social workers, public school administrators, members of the district attorney's office, police officials and community activists on the Philadelphia Youth Fatality

Review Team, which meets monthly to review youth homicides in Philadelphia.

Dr. Corbin is also a member of the Health Care Collaborative, a group of individuals representing local emergency departments that collects data on injured youths and uses it to improve services for this victimized population.

Having recently received a grant from the Soros Foundation's Physician Advocacy Fellowship, Dr. Corbin advocates for young victims of intentional injury. Collaborating with the Physicians for Social Responsibility on this project, Dr. Corbin convenes community-based groups to develop an advocacy agenda focused on trauma.

Dr. Corbin is helping Philadelphia recognize the need to change its approach to breaking the cycle of violence.

## Howard K. Rabinowitz, MD, Named Garber Professor



Howard K. Rabinowitz, MD, a family doctor who has been a member of the Jefferson Family and Community Medicine faculty for 30 years, has been

named the Ellen M. and Dale W. Garber Professor of Family Medicine.

Dr. Rabinowitz, a national leader in primary care and an international expert in increasing the supply of rural physicians, is Director of the Physician Shortage Area Program (PSAP) at Jefferson Medical College (JMC).

Author of more than 50 publications, Dr. Rabinowitz has

also written a book *Caring for the Country: Family Doctors in Small Rural Towns*, which tells the stories of the lives and work of 10 family doctors caring for rural America, all of whom are graduates of Jefferson's PSAP.

"Dr. Rabinowitz's commitment to broadening the reach of our healthcare system lies in his vast contributions to improving the supply and retention of rural family physicians," said Richard C. Wender, MD, Alumni Professor and Chair of the Department of Family and Community Medicine, JMC. "He believes that everyone deserves access to health care, and his dedication to this principle has

benefited countless patients in this region and throughout the country."

Established in 1984 through the estate of Dale Garber, MD, JMC 1924, the Ellen M. and Dale W. Garber Professorship in Family Medicine was created to support the Department of Family and Community Medicine and help increase the number of family physicians graduating each year. Dr. Garber, who was born in the small rural town of Blain, PA, spent his professional career as a beloved family doctor in Chester County, PA. Edward H. McGehee, MD, JMC 1945, was the first to hold this title.

## Jefferson Radiation Oncologist Adam P. Dicker, MD, PhD To Direct National-level Translational Research Program



Adam P. Dicker, MD, PhD, Associate Professor of Radiation Oncology at Jefferson Medical College (JMC), and an internationally

respected prostate cancer researcher, has been appointed to the national-level post of Radiation Therapy Oncology Group (RTOG) Vice-Chair for Translational Research. RTOG is a clinical research enterprise component of the American College of Radiology.

Dr. Dicker also assumes responsibilities as Chair of the RTOG Translational Research Program (TRP) committee.

"Dr. Dicker has been an instrumental member of the RTOG TRP committee," says RTOG Group Chair Walter J. Curran Jr., MD, Professor and Chair of Radiation Oncology at JMC. Dr. Curran, who is also Clinical Director of the

Kimmel Cancer Center at Jefferson (KCC) adds, "I know that under his leadership the committee will continue to enhance the organization's research efforts."

Dr. Dicker is also Director of the Division of Experimental Radiation Oncology in the Department of Radiation Oncology at JMC.

In his new RTOG role, Dr. Dicker will oversee all of the translational research conducted through RTOG. A primary goal will be to increase efforts in cancer informatics.

"Translational research will continue to be a major research effort at RTOG," he says. "We're entering an age of personalized medicine, and we're trying to make predictions based on molecular signatures as to which patients may benefit from a particular therapy, as well as try to predict which patients could experience toxicity. Our ability to translate laboratory findings to the clinic depends on developing new

tools and a better understanding of genomics and protein and molecular signatures. It's an exciting time to be conducting medical research, bridging the laboratory and clinic."

"This important new role for Dr. Dicker demonstrates the continued preeminence of Thomas Jefferson University and the Kimmel Cancer Center in developing new approaches for cancer," says Richard G. Pestell, MD, PhD, KCC Director and Professor and Chair of Cancer Biology at JMC.

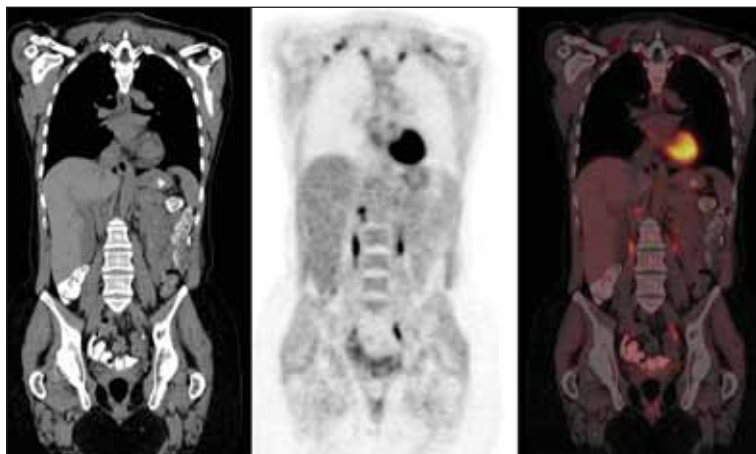
The RTOG TRP Committee sponsors research and educational programs that highlight emerging findings about tumor behavior, molecular mechanisms and the recent links between cancer therapy and disease. Committee members work with clinical scientists from both the academic and industrial communities to integrate new information into clinical trial designs.

## Jefferson Center City Imaging Offers New PET/CT Imaging

Jefferson Center City Imaging, one of Jefferson's Radiology outpatient imaging centers, has expanded its services by offering the world's most advanced PET/CT system – the Siemens Biograph LSO Hi-Rez.

This PET/CT system provides physicians with increased sensitivity, speed, high resolution and diagnostic confidence when treating patients who have cancer. It will provide improved image quality, utilizing the most advanced LSO crystal technology, electronics and treatment planning in the industry.

For oncology purposes, PET/CT imaging can be used to evaluate, stage, restage and monitor responses to therapy. For radiation treatment planning, PET/CT will identify the most precise therapy



plan for each patient. PET is also utilized and approved for seizure disorders and for distinguishing Alzheimer's disease from other forms of dementia.

For more information or to schedule appointments for patients, please call **1-866-JEFF-PET (533-3738)** or **215-503-4900**.

## With Jefferson a Key Player, Philadelphia Breathes Easier with New Asthma Grant



The health campaign against asthma in Philadelphia – in which Jefferson is a key player – has received a major boost that will bring asthma screening

to public schools and door-to-door visits in neighborhoods throughout the city.

The Philadelphia Allies Against Asthma coalition (PAAA) was awarded a four-year, \$2 million grant to combat pediatric asthma by the Merck Company Foundation's new Merck Childhood Asthma Network (MCAN) initiative.

"The MCAN grant provides a great opportunity to expand and integrate the services we can provide to Philadelphia's children with asthma," says Michael P. Rosenthal, MD, Co-Principal Investigator for the MCAN initiative and Co-Chair of Philadelphia Allies Against Asthma (PAAA). Dr. Rosenthal is

Vice Chair of Academic Programs in the Department of Family and Community Medicine, Jefferson Medical College.

"By using our Child Asthma Link Line and working collaboratively with our coalition partners, we will be able to identify more children with asthma, link them with providers for care, and provide home and community-based education to help them better control their disease," Dr. Rosenthal adds.

The grant will support services provided by the coalition's lead partners, the Health Promotion Council of Southeastern Pennsylvania (HPC), the Community Asthma Prevention Program (CAPP) at The Children's Hospital of Philadelphia, and Thomas Jefferson University. Philadelphia is one of five cities nationwide to receive this grant.

"Since its inception in 2000, the PAAA coalition has addressed gaps in care for children with asthma, including coordination of services,

family asthma education, home environment issues and community-based education," says Vanessa Briggs, Executive Director of the HPC and Project Director for the MCAN initiative.

"This new grant enables PAAA to expand these services beyond West and North Philadelphia so that children and families with asthma in South, Northwest and Lower Northeast Philadelphia can also benefit."

It is estimated that 30 percent of children 5 to 15 years old in Philadelphia have asthma, yet there is no concrete way to measure prevalence. For the first time in Philadelphia, children will be screened for asthma at targeted schools, and door-to-door asthma screenings will be performed in high-risk neighborhoods in order to have a better grasp of the true prevalence of asthma in Philadelphia, and to connect these families with integrated services.

## Jefferson Students Reach Out To Youth Through Dance

Jefferson Dance Troupe, a group of talented medical and health professions students, have formed a partnership with Point Breeze Performing Arts Center in South Philadelphia, a community center with the mission of arts for social change.

Jefferson Dance Troupe members mentor youths at the center, establishing a mutually beneficial relationship through the art of dance. The group's first joint performance with 7th to 9th grade students was held at the Family and Community Medicine name-changing ceremony in Jefferson Alumni Hall (photo).

Now a part of the Point Breeze family, the Jefferson students have been asked to perform at numerous public venues, including at the Gallery Mall in celebration of



Don Walker Photography

Martin Luther King Day. The group was co-founded by Tania Mucci, JMC '08, at far right in photo, and Tina Shah, JMC '08, at left, with white stripes down her sleeve.

This dance partnership has

spawned additional activities, including an asthma screening as well as nutrition, health and hygiene seminars for youths at the center to be held this spring.

## Announcing Expanded Roles for Diana C. Murphy and Maureen K. McDade

John Ogunkeye, Chief Operating Officer, Jefferson Medical College (JMC) and Executive Director, Jefferson University Physicians (JUP) has announced the appointments of Diana C. Murphy and Maureen K. McDade to expanded responsibilities within the college and the next level of reorganization to support the strengthened alignment of the business functions of Jefferson University Physicians and Jefferson Medical College). Specifically, Diana C. Murphy has been appointed Senior Director of Business Affairs and Decision Support at JMC and JUP, and the responsibilities of Maureen K. McDade, JUP's Senior Director, Operations have been expanded.

"Diana's new position, which includes dual responsibilities within JMC and JUP, and expansion of Maureen's responsibilities to include a JMC role are designed to support the strategic agenda of the college by leveraging the strengths of the college and the practice plan, while streamlining their operations and resource utilization to provide measurable efficiency," Mr. Ogunkeye said.



John Ogunkeye, Maureen K. McDade, Diana C. Murphy

### Diana C. Murphy

In her new role as Senior Director of Business Affairs and Decision Support at JMC and JUP, Diana C. Murphy will report to Mr. Ogunkeye and serve JMC as the principal support to the COO and Dean Thomas J. Nasca, MD, with responsibilities for the coordination of the managerial and administrative functions of the college. She will direct the business and operational affairs of the college along with its infrastructure, with specific responsibilities including faculty contracts, program evaluation and business management and decision support. As a member of the JUP leadership team, Diana will advise and counsel the Executive Director, Medical Director and President of JUP in the area of strategy development and implementation. You can reach Diana at **215-955-0804**.

### Maureen K. McDade

Maureen K. McDade, Senior Director, Operations, at JUP, is responsible for consulting, advising and assisting in providing leadership in coordinating and planning for the operations of JUP and JMC. Her expanded responsibilities include components of facilities management, business services and human resources for ambulatory care across the board for the JMC and JUP. Maureen continues to report to Mr. Ogunkeye. You can reach Maureen at **215-955-7925**.

## Calling All Artists, Poets, Creative Spirits

The Kimmel Cancer Center at Jefferson will again be exhibiting art, poetry, and stories of hope by cancer survivors and family members at the 7th Annual Celebration of Life on May 24 from 4:30 to 6:30 p.m. in the Bluemle Life Sciences Building. Please call **215-955-1160** to arrange to have your work displayed.

### Paul Marks, MD, of Memorial Sloan-Kettering Cancer Center, To Deliver 2nd Annual Presidential Lecture May 3

Paul Marks, MD, President Emeritus and Member, Memorial Sloan Kettering Cancer Center, will deliver the 2nd Annual Presidential Lecture in 101 Bluemle Life Sciences Building at 4 p.m. on May 3.

University President Robert L. Barchi, MD, PhD, last year presented the inaugural Presidential Lecture entitled "Musings on Ion Channels, Mutations and Disease."

