

## Course Faculty

<b>Indra Das, PhD</b>	Department of Radiation Oncology University of Indiana Hospital
<b>Eric Gingold, PhD</b>	Department of Radiology Thomas Jefferson University Hospital
<b>Amy Harrison, MS</b>	Department of Radiation Oncology Thomas Jefferson University Hospital
<b>Shalom Kalnicki, MD</b>	Department of Radiation Oncology Montefiore Medical Center
<b>John Keklak, MS</b>	Radiation Safety Officer Thomas Jefferson University
<b>Peck-Sun Lin, PhD</b>	Department of Radiation Oncology Virginia Commonwealth University
<b>Cheng Saw, PhD</b>	Department of Radiation Oncology Penn State Hershey Medical Center
<b>Andrew Wu, PhD</b>	Department of Radiologic Sciences Thomas Jefferson University

## Education Objectives and Course Description

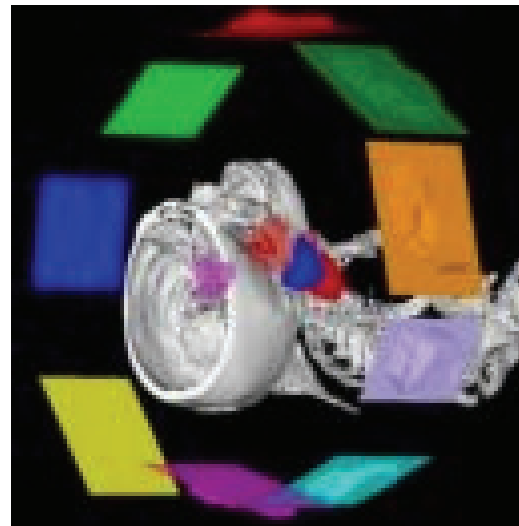
This program will review a broad range of subjects relating to the practices of medical dosimetry in the field of radiation oncology. The course is intended for medical dosimetry students or staff who are preparing for the MDCB certification examination or for dosimetrists/therapists requiring CE credits. Materials include speakers Powerpoints and a practice test. Dosimetrists/therapists can earn up to 16 Category A CE credits from the ASRT and/or MDCB

## Accreditation ASRT / MDCB

This program has been submitted for approval of 16 hours of Category A CE credit to the American Society of Radiologic Technology (ASRT) and for accreditation approval to the Medical Dosimetrist Certification Board (MDCB). Guidelines approved by ASRT for verifying attendances of each lecture will be followed and a certificate of attendance will be issued by Thomas Jefferson University and will be mailed to each qualified attendee.

# 4<sup>th</sup> Annual Medical Dosimetry Review Course

May 15-16, 2009



Sponsored by  
**Thomas Jefferson University**  
Department of Radiologic Sciences

Brent Auditorium  
Jefferson Alumni Hall  
1020 Locust Street  
Philadelphia, PA 19107

  
**Jefferson**  
College of Health Professions

Medical Dosimetry Review Course  
Department of Radiologic Sciences  
130 South 9<sup>th</sup> Street, Suite 1000  
Philadelphia, PA 19107

# Program Schedule

## Friday, May 15, 2009

- 7:30 am Registration Desk Open  
Coffee, Tea & Pastries
- 7:50 am Opening Announcement  
*Andrew Wu, PhD*
- 8:00 am "What you need to know to pass the MDCB board: An Insight View"  
*Indra Das, PhD*
- 9:00 am Radiation Protection  
*John Keklak, MS*
- 10:00 am Coffee Break
- 10:20 am Patient Set-ups and Tumor Localizations  
*Amy Harrison, CMD, MS*
- 11:20 am Brachtherapy  
*Andrew Wu, PhD*
- 12:20 pm Lunch Provided
- 1:00 pm Dose Calculation Methods (I)  
*Andrew Wu, PhD*
- 2:00 pm Basic Principles of Computer, Network, and Imaging  
*Eric Gingold, PhD*
- 3:00 pm Soft Drink Break
- 3:20 pm Radiation Physics (I)  
*Cheng Saw, PhD*
- 4:20 pm Radiobiology  
*Peck-Sun Lin, PhD*
- 5:20 pm End of Session

## Saturday, May 16, 2009

- 7:30 am Registration Desk Open  
Coffee, Tea & Pastries
- 8:00 am Treatment Planning (I)  
*Indra Das, PhD*
- 9:00 am Radiation Physics (II)  
*Cheng Saw, PhD*
- 10:00 am Coffee Break
- 10:20 am Dose Calculation Methods (II)  
*Andrew Wu, PhD*
- 11:20 am Treatment Planning (II)  
*Indra Das, PhD*
- 12:20 pm Lunch Provided
- 1:00 pm Radiation Physics (III)  
*Cheng Saw, PhD*
- 2:00 pm Dose Calculations Methods (III)  
*Andrew Wu, PhD*
- 3:00 pm Soft Drink Break
- 3:20 pm Inverse Treatment Planning (IMRT)  
*Indra Das, PhD*
- 4:20 pm Clinical Radiation Oncology  
*Shalom Kalnicki, MD*
- 5:20 pm End of Course

# Registration

**Early Fee** **\$325.00**

(Payment received on or before 4/17/09):

**Standard Fee** **\$375.00**

(Payment received after 4/17/09):

### Cancellation and Refund Policy:

1. Cancellations received on or before 5/1/09 will receive a full refund.
2. Cancellations received in writing after 5/1/09, but before 5/8/09 will be refunded the registration fee less a \$75.00 service charge.
3. No refund or credit will be available on or after 5/8/09. No exceptions will be made.

*Please make check or money order payable to  
"TJU – Department of Radiologic Sciences"*

<b>Registration Form</b> (please print)	
Name:	
Facility:	
Address:	
Daytime Phone:	
E-mail:	
<small>*Credit card payments available for Pre-Registration ONLY*</small>	
Charge to (Only): <input type="checkbox"/> <b>Visa</b> <input type="checkbox"/> <b>Mastercard</b>	
Credit Card #:	Expiration Date:
Name on Card (Print):	
Signature:	

### Reason for attending:

- Review for MDCB Exam     ASRT CE Credit  
 Review for RT(T) Exam     MDCB CE Credit

## Program Committee

### Andrew Wu, PhD, FAAPM

Course Organizer/Clinical Professor  
Department of Radiologic Sciences  
Thomas Jefferson University

### Suzanne Schaffling

Education Coordinator  
Department of Radiologic Sciences  
Thomas Jefferson University

### Blanche Ramsey-Riggs

Administrative Assistant  
Department of Radiologic Sciences  
Thomas Jefferson University

## Directions

### Hotel Information

Holiday Inn Express  
Midtown  
1305 Walnut Street  
Philadelphia, PA 19107  
215-735-9300

### Parking on campus

Walnut Towers  
800-834 Walnut Street  
Philadelphia, PA 19107

### Directions

*From New Jersey via the Ben Franklin Bridge:*

- Cross the Ben Franklin Bridge.
- After the toll booth, stay in the left lane directing you to 8th Street.
- Turn left onto 8th Street to Arch Street.
- Turn right onto Arch Street to 10th Street.
- Turn left onto 10th Street and continue to the Jefferson campus.

*From 76 East:*

- Take Rt. 76 East; follow signs for Exit 344 (Central Phila/676 East).
- Take Exit 344 to Vine Street and follow Vine Street to 10th Street.
- Turn right onto 10th Street and continue to the Jefferson campus.

*Send registration form to:*  
**Thomas Jefferson University**  
**Department of Radiologic Sciences**  
**130 South 9<sup>th</sup> Street**  
**Suite 1013**  
**Philadelphia, PA 19107**

*For more information:*  
 Phone: 215-503-7795  
 Fax: 215-503-1031  
 E-mail: [suzanne.schaffling@jefferson.edu](mailto:suzanne.schaffling@jefferson.edu)