

Randy Burd, PhD	Department of Radiologic Sciences Thomas Jefferson University Hospital
Robert Den, MD	Department of Radiation Oncology Thomas Jefferson University Hospital
Amy Harrison, MS, CMD	Department of Radiation Oncology Thomas Jefferson University Hospital
Brian Hasson, PhD	Department of Radiation Oncology Abington Memorial Hospital
Ryan Hofmann, MS, RT(MR)(T)	Department of Radiologic Sciences Thomas Jefferson University
John Keklak, MS	Radiation Safety Officer Thomas Jefferson University Hospital
Hector Lopez, MD	Department of Radiologic Sciences Thomas Jefferson University
Susan Munro, RN, OCN	Department of Radiation Oncology Thomas Jefferson University Hospital
Shawn McNeeley, MS	Princeton Radiation Oncology Group
Donna Powell, MS, CMD, RT(T)	Department of Radiologic Sciences Thomas Jefferson University
Laura Ryan, RT(T)	Department of Radiation Oncology Bayhealth Medical Center
Robert Smith, MS	Princeton Radiation Oncology Group
Jill Steele, CMD, RT(T)	Princeton Radiation Oncology Group
Donna Stinson, MS	Department of Radiation Oncology Bayhealth Medical Center

Education Objectives and Course Description

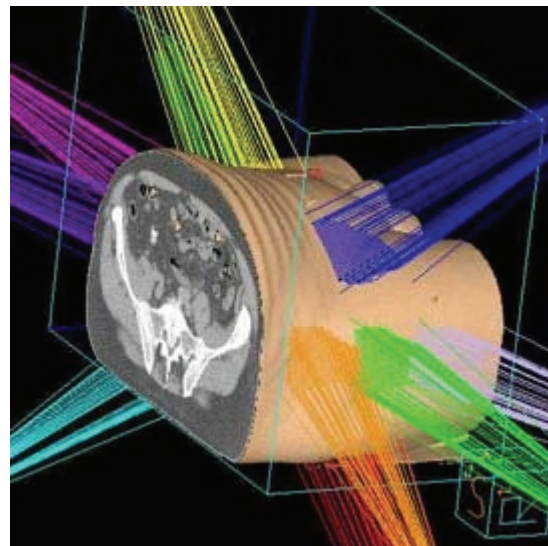
This program will review a broad range of subjects relating in the field of radiation oncology. The course is intended for radiation therapy students or staff who are preparing for the RTT certification examination or for dosimetrists/therapists requiring CE credits. Materials include speakers Powerpoints and a practice test.

Accreditation ASRT / MDCB

This program has been submitted for approval of 20 hours of Category A CE credit to the American Society of Radiologic Technology (ASRT) and for accreditation approval to the Medical Dosimetrist Certification Board (MDCB). Guidelines approved by ASRT for verifying attendances of each lecture will be followed and a certificate of attendance will be issued by Thomas Jefferson University and will be mailed to each qualified attendee.

2nd Annual Radiation Therapy Review Course

June 3-5, 2009



Sponsored by
Thomas Jefferson University
Department of Radiologic Sciences

Brent Auditorium
Jefferson Alumni Hall
1020 Locust Street
Philadelphia, PA 19107

Program Schedule

Registration

Wednesday, June 3, 2009

7:30 am	Registration Desk Open Coffee, Tea & Pastries
7:45 am	Opening Announcement <i>Donna Powell, MS, CMD, RT(T)</i>
8:00 am	Clinical Concepts <i>Robert Den, MD</i>
9:50 am	Coffee Break
10:00 am	Patient Care <i>Susan Munro, RN, OCN</i>
11:00 am	Radiation Physics/Biology <i>Robert Smith, MS</i>
12:00 pm	Lunch Provided
1:00 pm	Radiation Protection <i>John Keklak, MS</i>
2:30 pm	Soft Drink Break
2:45 pm	Quality Assurance <i>Brian Hasson, PhD</i>
4:00 pm	End of Session

Thursday, June 4, 2009

7:30 am	Registration Desk Open Coffee, Tea & Pastries
8:00 am	Tumor Volume Localization <i>Amy Harrison, MS, CMD</i>
9:00 am	Math Review/Dose Calculations <i>TBA</i>
12:00 pm	Lunch Provided
1:00 pm	Equipment Monitoring and Documentation <i>Donna Stinson, MS</i>
2:00 pm	Test Taking Strategies <i>Laura Ryan, RT(T)</i>
3:00 pm	Soft Drink Break
3:15 pm	Interactive Mock Review <i>Donna Powell, MS, CMD, RT(T)</i>
4:30 pm	Q & A
5:00 pm	End of Session

Friday, June 5, 2009

7:30 am	Registration Desk Open Coffee, Tea & Pastries
8:00 am	Cross-Sectional Anatomy <i>Hector Lopez, MD</i>
9:50 am	Coffee Break
10:00 am	Treatment Delivery <i>Ryan Hofmann, MS, RT(MR)(T)</i>
11:00 am	Emerging Technologies <i>Donna Powell, MS, CMD, RT(T)</i>
12:00 pm	Lunch Provided
1:00 pm	Trouble Shooting <i>Jill Steele, CMD, RT(T)</i>
2:00 pm	Brachytherapy <i>Shawn McNeeley, MS</i>
3:00 pm	Soft Drink Break
3:15 pm	Radiobiology <i>Randy Burd, PhD</i>
4:30 pm	End of Session

Early Fee **\$325.00**
(Payment received on or before 5/1/09):

Standard Fee **\$375.00**
(Payment received after 5/1/09):

Cancellation and Refund Policy:

1. Cancellations received on or before 5/30/09 will receive a full refund.
2. Cancellations received in writing after 5/30/09 will be refunded the registration fee less a \$75.00 service charge.
3. No refund or credit will be available on or after 6/1/09. No exceptions will be made.

*Please make check or money order payable to
"TJU – Department of Radiologic Sciences"*

Registration Form (please print)

Name:	
Facility:	
Address:	
Daytime Phone:	
E-mail:	
Credit card payments available for Pre-Registration ONLY	
Charge to (Only): <input type="checkbox"/> Visa <input type="checkbox"/> Mastercard	
Credit Card #:	Expiration Date:
Name on Card (Print):	
Signature:	

- Reason for attending:**
- Review for RT(T) Exam ASRT CE Credit
 MDCB CE Credit

Program Committee

Donna Powell, MS, CMD, RT(T)
Program Director
Medical Dosimetry/Radiation Therapy Program
Department of Radiologic Sciences
Thomas Jefferson University

Suzanne Schaffling
Education Coordinator
Department of Radiologic Sciences
Thomas Jefferson University

Blanche Ramsey-Riggs
Administrative Assistant
Department of Radiologic Sciences
Thomas Jefferson University

Directions

Hotel Information

Holiday Inn Express
Midtown
1305 Walnut Street
Philadelphia, PA 19107

Parking on campus

Walnut Towers
800-834 Walnut Street
Philadelphia, PA 19107

Directions

From New Jersey via the Ben Franklin Bridge:

- Cross the Ben Franklin Bridge.
- After the toll booth, stay in the left lane directing you to 8th Street.
- Turn left onto 8th Street to Arch Street.
- Turn right onto Arch Street to 10th Street.
- Turn left onto 10th Street and continue to the Jefferson campus.

From 76 East:

- Take Rt. 76 East; follow signs for Exit 344 (Central Phila/676 East).
- Take Exit 344 to Vine Street and follow Vine Street to 10th Street.
- Turn right onto 10th Street and continue to the Jefferson campus.

Send registration form to:
Thomas Jefferson University
Department of Radiologic Sciences
130 South 9th Street
Suite 1013
Philadelphia, PA 19107

For more information:
Phone: 215-503-7795
Fax: 215-503-1031
E-mail: suzanne.schaffling@jefferson.edu