

Macintosh (Leopard) Wireless Configuration Setup Instructions

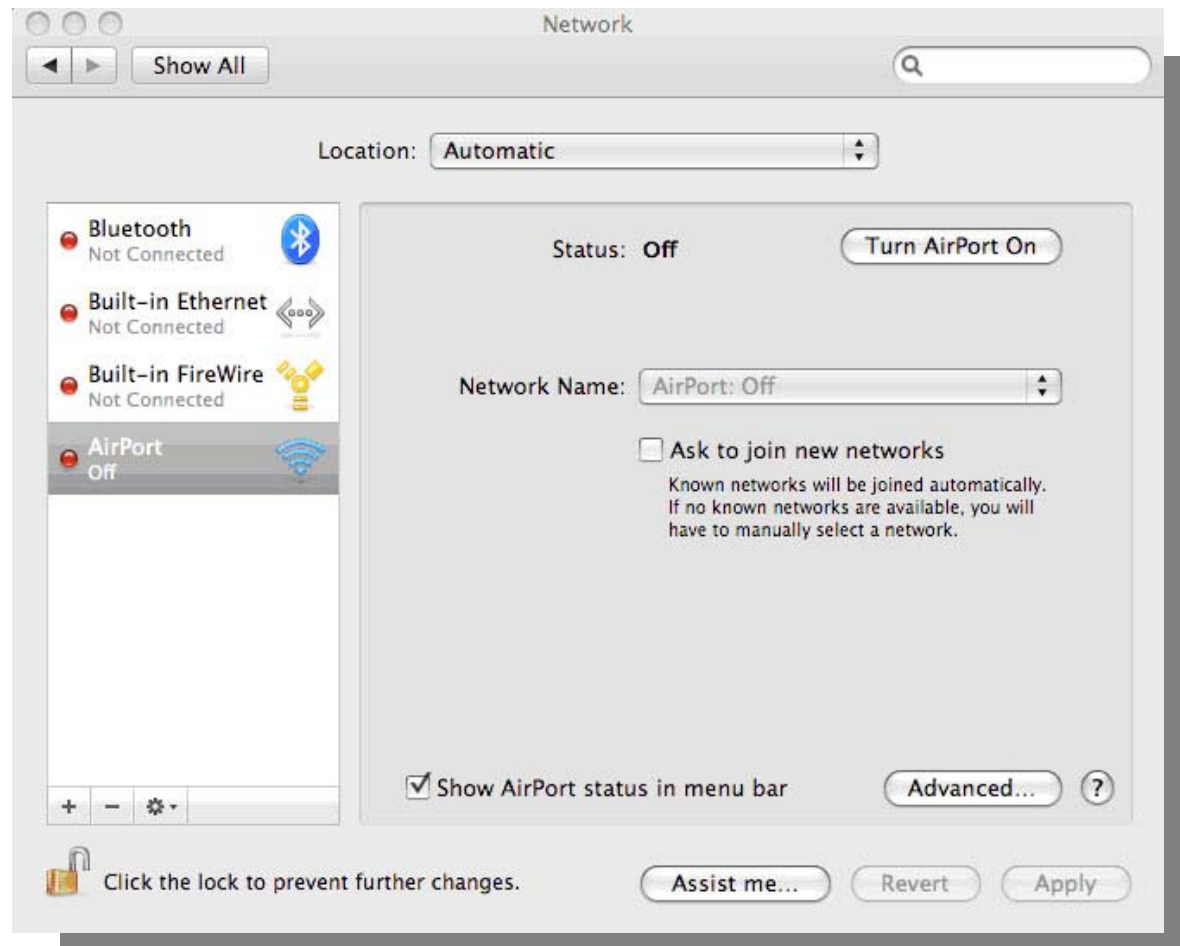
Instructions for OSX (10.5.3+) Leopard

(This instruction set has change with a software update of the OS.)

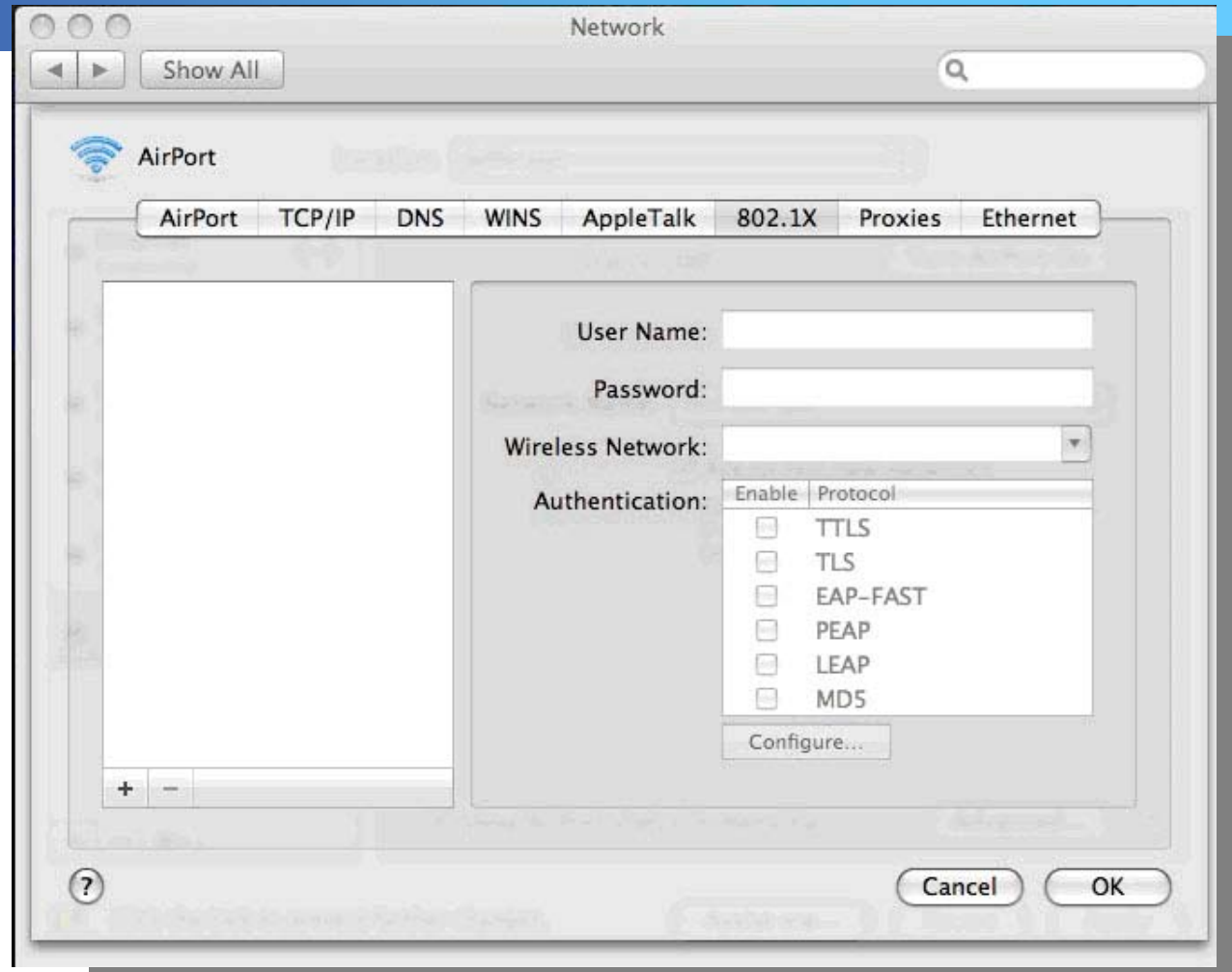


- 1) Go to the Apple Menu, and select System Preferences
- 2) Click the Network system preference icon in the third row

3) Click AirPort on the left, and click Advanced... at the bottom right



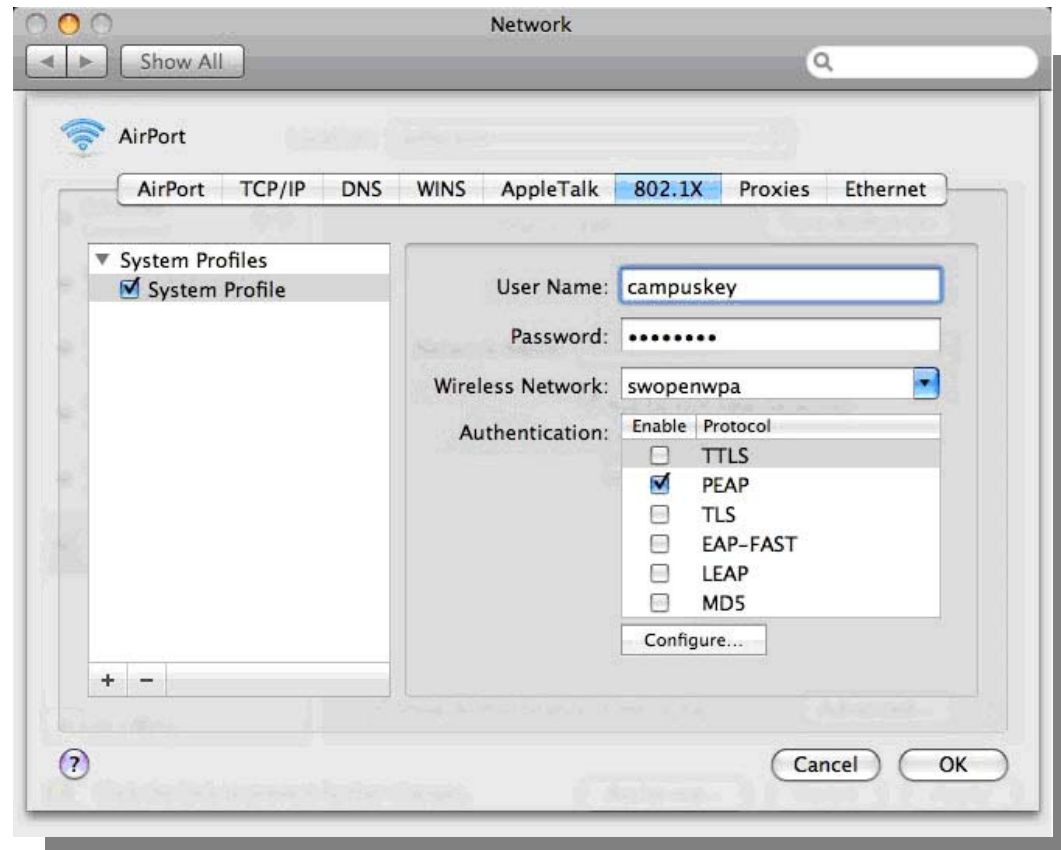
4) Click the 802.1X tab



5) Click the Plus sign in the bottom left corner and select System profile.

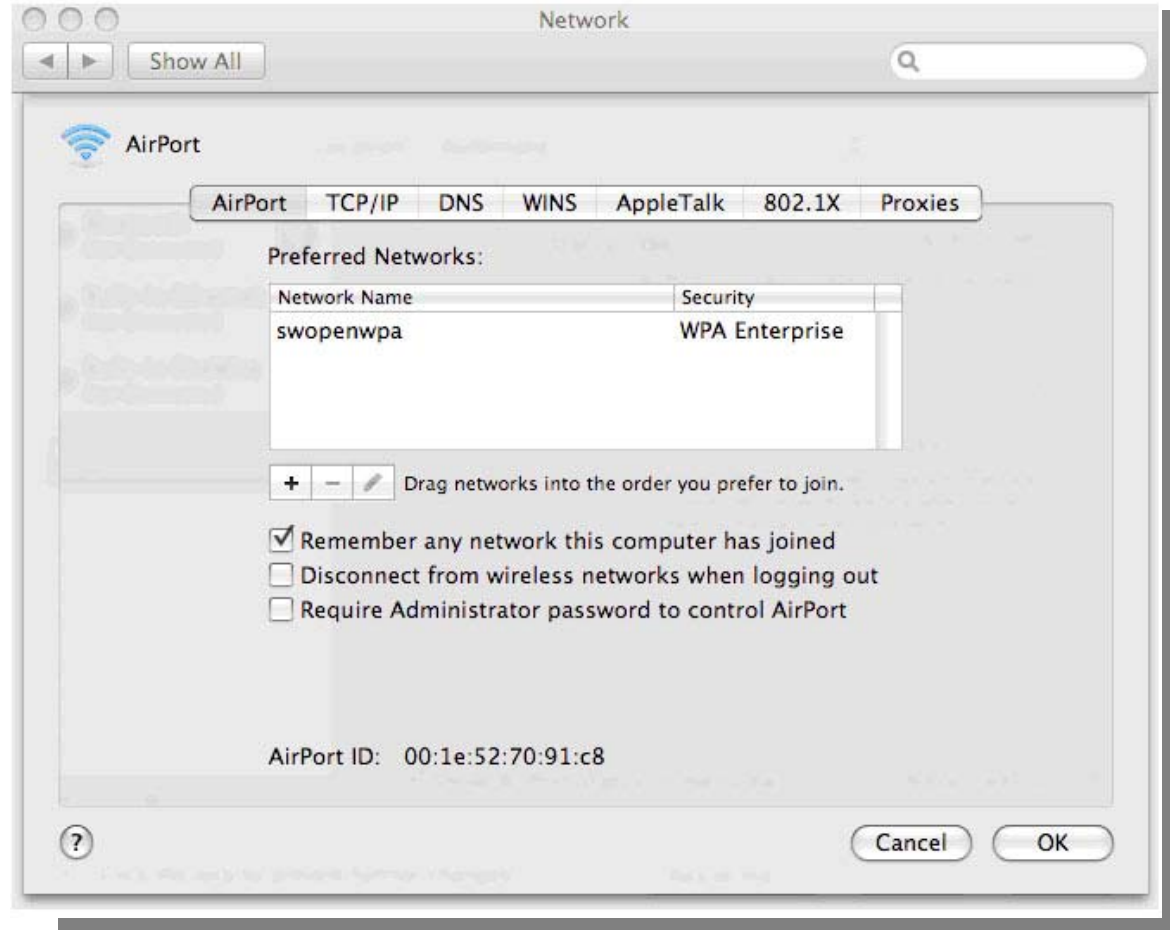
6) On the right, enter the following information:

- * User Name: enter your campus key for username
- * Password: enter your password
- * Wireless Network: swopenwpa
- * Authentication: Ensure that only PEAP is checked



*Click OK which should bring you back to the network system panel.

8) Highlight swopenwpa and Click the Pencil Button



10) Enter in the following information (some fields may already be filled):

- * Network Name: ***swopenwpa***
- * Security: ***WPA2 Enterprise***
- * User Name: ***your campus key***
- * Password: Your ***password***
- * 802.1X: WPA: ***swopenwpa***
- * Ensure the "Remember this network" checkbox is checked

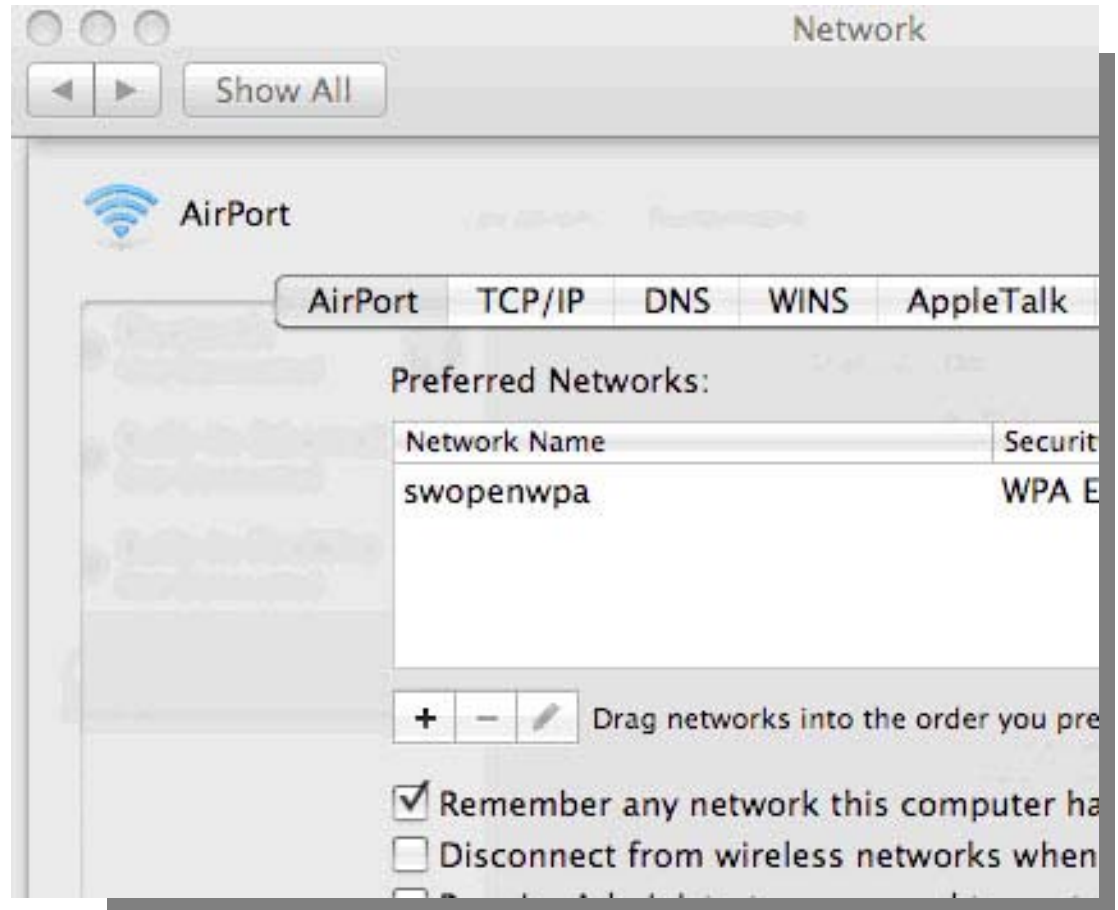
* Click OK

The screenshot shows a Windows network configuration dialog box with the following fields and options:

- Network Name:** swopenwpa
- Security:** WPA2 Enterprise
- User Name:** yourcampuskey
- Password:** (masked with dots)
- 802.1X:** WPA: swopenwpa
- Remember this network
- Buttons: Show Networks, Cancel, Add

The Airport window should look like this now.

Click OK



Your Network system panel should look like this.

Click the apply button at the bottom/right of the system panel.

The system should log in for you.

If you don't connect right away, click the "turn airport off" option and then click it again to turn it back on.

