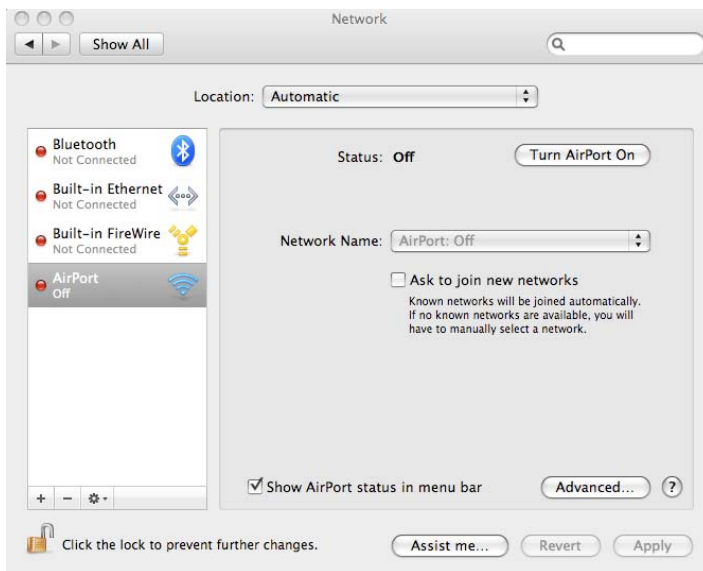


## Instructions for OSX (10.6+) Snow Leopard

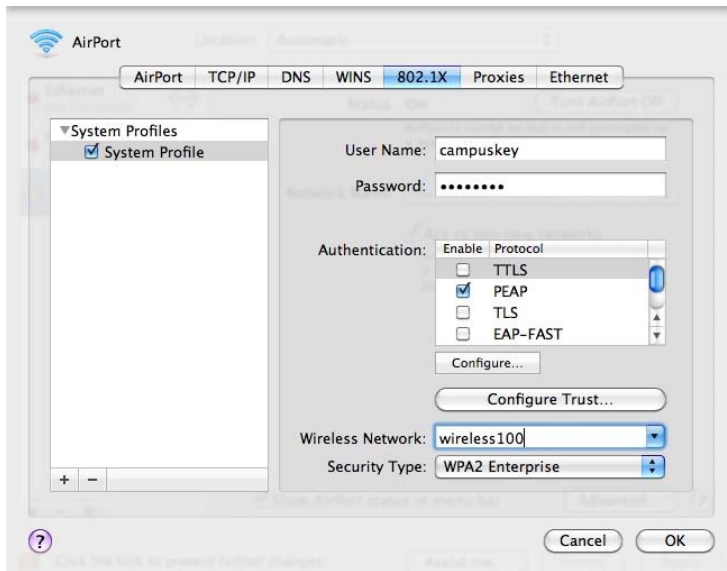
- 1) Go to the Apple Menu, and select System Preferences
- 2) Click the Network system preference icon in the third row



- 3) Click AirPort on the left, and click Advanced... at the bottom right

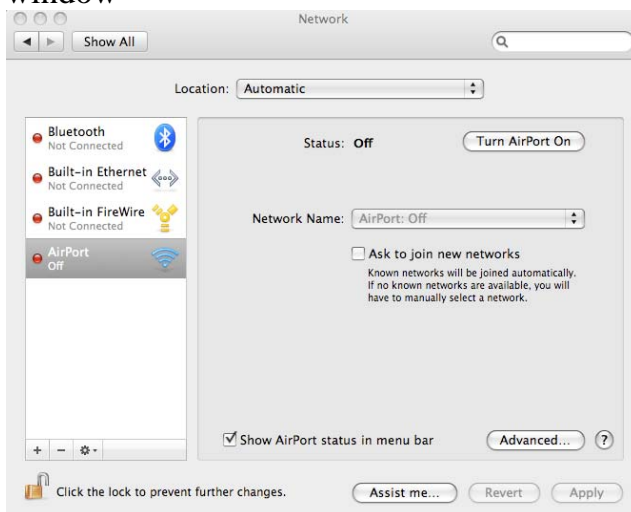


- 4) Click the 802.1X tab
- 5) Click the Plus sign in the bottom left corner and select System profile.
- 6) On the right, enter the following information:
  - User Name: enter your campus key for username
  - Password: enter your password
  - Authentication: Ensure that only PEAP is checked
  - Wireless Network: wireless100
  - Security Type: WPA2 Enterprise

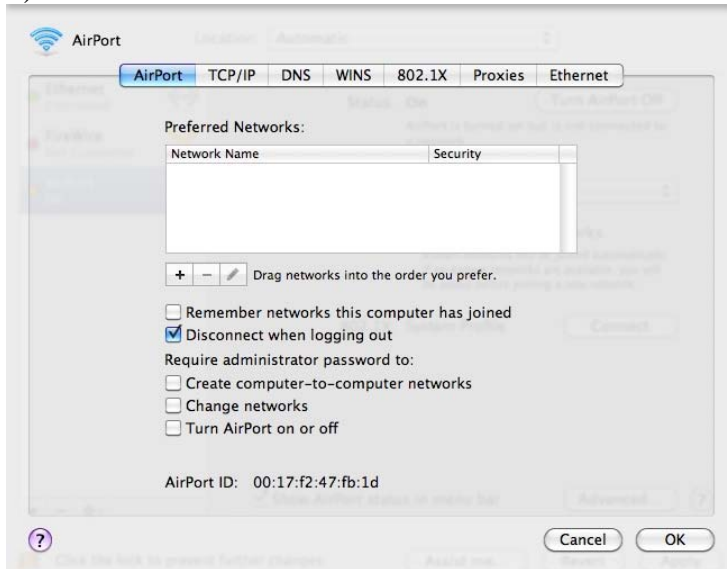


\*Click OK which should bring you back to the network system panel.

- 7) Click on Apply and after that click on the advanced button at the Bottom of the window

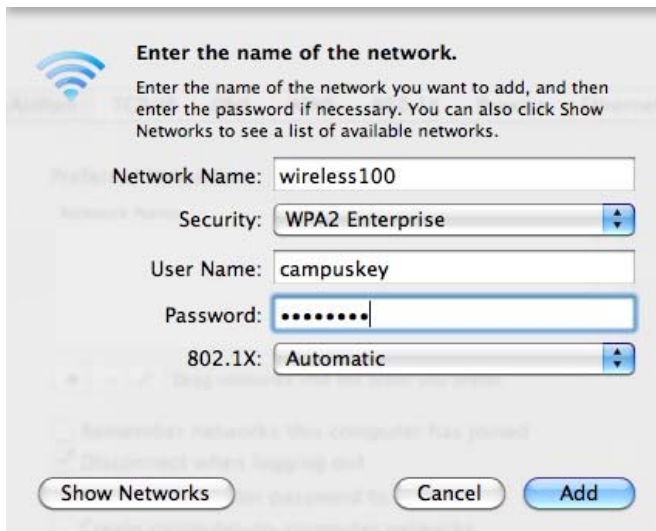


## 8) Click the + Button



## 9) Enter in the following information in the new window (some fields may already be filled):

- \* Network Name: wireless100
- \* Security: WPA2 Enterprise
- \* User Name: your campus key
- \* Password: Your password
- \* 802.1X: WPA: Automatic
- \* Click add



## 10) Click OK on the new window.

11) Click the Apply button at the bottom.

The system should log in for you.

If you do not connect right away, click the “turn airport off” and then click again to turn it back on.

If you have not logged in before or if the Certificate has been updated you will be presented with this window after you have connected to the wireless network.



There are two Certificate servers so you will have to do this twice, once for each server once a year. The names of the servers are “radius5” and “radius6”.

12) Click the continue button and you will be allowed on the network.