

# 4<sup>th</sup> International Smart and Healthy Cities Symposium

Presented by the Institute of Smart and Healthy Cities at Thomas Jefferson University, Università IUAV di Venezia, Italy, and AARP PA



**Thursday, October 20**

Visit [Jefferson.edu/CABEvents](https://jefferson.edu/CABEvents) for full details.

## SPEAKER BIOS

### *Panel I: Understanding the Impact of Smart Cities: Policies, Design, Economics, Big Data, Environment and Population Health*

**Dr. Stefan Al**  
*Professor, Virginia Tech & Colombia University*



As a Dutch architect, urban designer, and researcher, Stefan Al works on the design of mixed-use developments, master plans, and high-rise towers across the world. He has focused on pressing issues related to designing large-scale projects within the contemporary city, including high-density, sustainable mobility, and urban resilience. In this work, he is able to draw from his extensive research and eight books which have been widely acclaimed including by The New York Times, Wall Street Journal, Architectural Record, and The Times. His co-authored book, *Beyond Mobility*, has won the National Urban Design Award. In addition to his design work, he serves as a faculty member at Virginia Tech and Columbia University. He holds a PhD in urban planning from the University of California, Berkeley.

**Yocasta Lora**  
*Associate State Director of Advocacy & Community Engagement, AARP Pennsylvania*



After receiving a bachelor degree from La Salle University, Lora worked in HR and Finance at Flynn & O'Hara, a uniform company. Lora then went on to serve as the Director of Programs for the Greater Philadelphia Hispanic Chamber of Commerce. At the chamber of commerce, Lora managed and supported the two largest programs at the chamber — the Small Business Development and Education program and the Professional Mentoring Network program. In 2015, she joined AARP. Lora works to develop strategic partnerships with community organizations, local government, and business in the Southeast region to deliver impact, relevance and engagement to the 50+ population.

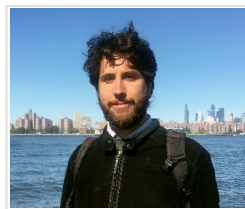


**Dr. Kathleen Miller**  
*Institute for the Study of  
Society & Environment,  
National Center for  
Atmospheric Research,  
Boulder, CO*



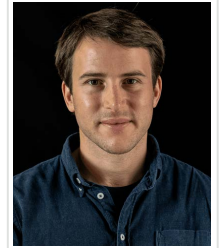
Dr. Kathleen Miller is an economist who worked for 32 years with an interdisciplinary research group at the U.S. National Center for Atmospheric Research (NCAR). She now serves as a Senior Research Associate in the Research Applications Lab at NCAR. Her research has included applications of natural resource and environmental economics to assess climate impacts, vulnerability and adaptation. In particular, her work has focused on the governance of shared environmental resources in a changing climate. That work has highlighted the need to build a comprehensive understanding how natural resource systems respond to the combined impacts of climate variability, human exploitation, other anthropogenic stressors and management actions.

**Mattia Bertin**  
*Professor, Urban  
Planning & Design,  
Università Iuav di Venezia*



Mattia Bertin is a scholar in urban design. His research deals with complex urban issues related to climate change, disaster and marginality. He is conducting research on issues of climate change adaptation and post-disaster reconstruction. He works in the redevelopment of marginalized areas, especially in Italy and Spain. He is a member of the Epic research group of the Iuav University of Venice, supported by Fondazione Eni Enrico Mattei, and a permanent invited member of the Locus research group of the Universidad Politécnica de Madrid.

**Vittore Negretto, PhD**  
*Università Iuav di  
Venezia, Dipartimento  
di Culture del Progetto*



Negretto is an Architect and Ph.D. candidate in “Emergency” at the IUAV University of Venice, researching climate emergency and urban resilience. He holds a master degree in Architecture and Innovation from the IUAV University of Venice and a bachelor degree in Science of Architecture from the Polytechnic University of Milan. Since 2016, he is a member of the interdisciplinary research group Planning Climate Change LAB and has developed and managed European projects, local plans, design and educational projects. Since 2019, he is a member of the international research group SDU Resilience based in Copenhagen where he researches tools to operationalize urban resilience. His research focus is aimed at the urban environments and their relations with climate change.

**Carlo Federico dall’Omo**  
*Doctoral Researcher,  
Università Iuav di Venezia*



Carlo Federico dall’Omo is a PhD candidate at Università Iuav di Venezia. He is a researcher in the Planning & Climate Change Lab, working on European projects oriented towards territorial cooperation for adaptation to the impacts of climate change.

## Panel 1: Opening Remarks & Moderators

### **Barbara Klinkhammer**

Dean, College of Architecture  
& the Built Environment,  
Thomas Jefferson University



A successful administrator, accomplished scholar, design teacher and architect, Barbara Klinkhammer became Executive Dean of the College of Architecture and the Built Environment at Thomas Jefferson University in August 2012. She is recognized as a thought leader in architecture and urban design, as well as a women pioneer in the fields of architecture and construction. Klinkhammer came to Jefferson from the University of Tennessee, Knoxville, where she served as a tenured professor in several administrative roles including Associate Dean, Chair of Interior Design, and Chair of the Graduate Architecture Programs. Prior to coming to the United States in 1999, Professor Klinkhammer taught for five years at the Bauhaus University in Weimar, Germany.

### **Edgar Stach, PhD**

Director, Institute for Smart  
and Healthy Cities,  
Professor of Architecture,  
Thomas Jefferson University



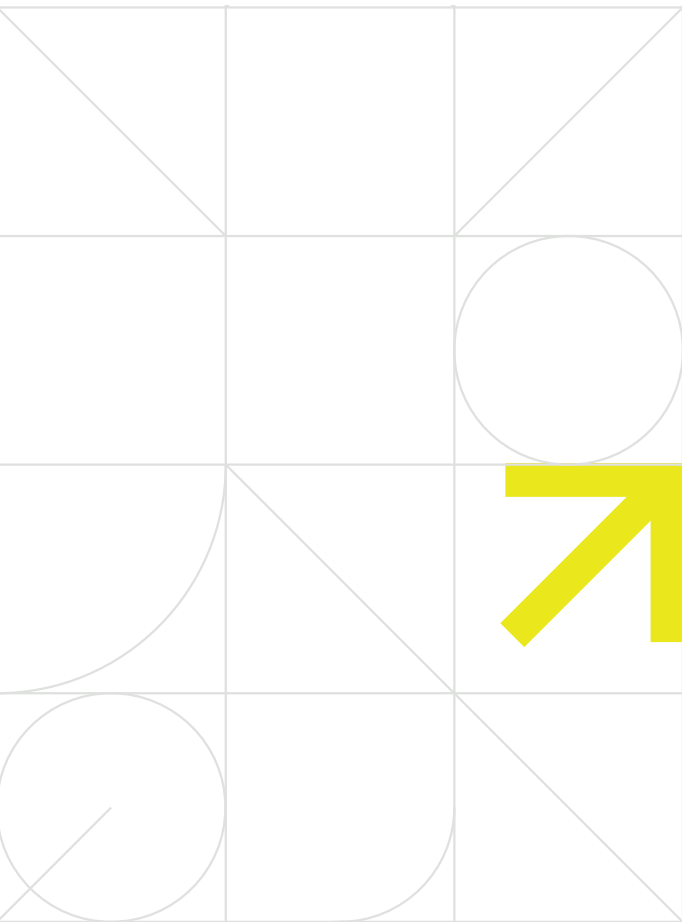
Prof. Edgar Stach, PhD. ( Dr.-Ing.), AIA/IA, RA (Germany) is Professor (tenured) at Thomas Jefferson University, College of Architecture and the Built Environment and the College of Design, Engineering and Commerce and joint Faculty at Oak Ridge National Laboratories USA (ORNL), Building Technologies Research and Integration Center. Before joining the faculty at Philadelphia University in 2012 he was from 1999 to 2012 faculty (tenured) at The University of Tennessee (UT), College of Architecture and Design and from 1995 to 1999 at the Bauhaus University Weimar in Germany. From 2007 to 2009 he was visiting research Professor at the Department of Building Technology at the TU Delft, Netherlands.

### **Francisco Musco, PhD**

*Professor, Urban  
Planning, Università  
Iuav di Venezia*



Musco is a professor in Urban Planning at the Department of Architecture and Arts – Università Iuav di Venezia. Trained in architecture and urban planning, Musco completed his PhD in 2007 with a dissertation in "Analysis and Governance for Sustainable Development". Musco is the director of the graduate degree program in Planning and Policies for Cities, Territory and Environment and director of the Erasmus Mundus Master Course on Maritime Spatial Planning. He is also Deputy Director for Research and member of the board of directors for CORILA Consortium for Coordination of research activities concerning the Venice Lagoon System. Supporter of a multidisciplinary approach to city and environmental planning, Musco focuses his research activity on the relationship between urban planning, sustainability and resilience, with particular attention to sustainable urban regeneration processes and the implementation of local plans and their contribution to "climate-proof planning".



# 4<sup>th</sup> International Smart and Healthy Cities Symposium

Presented by the Institute of Smart and Healthy Cities at Thomas Jefferson University, Università IUAV di Venezia, Italy, and AARP PA



**Friday, October 21**

Visit [Jefferson.edu/CABEvents](http://Jefferson.edu/CABEvents) for full details.

## SPEAKER BIOS

### Panel II: Drivers for Change: Population Health, Technological Innovation, Built Environment, Entrepreneurship

**Francisco Musco, PhD**  
*Professor, Urban Planning, Università Iuav di Venezia*



Musco is a professor in Urban Planning at the Department of Architecture and Arts – Università Iuav di Venezia. Trained in architecture and urban planning, Musco completed his PhD in 2007 with a dissertation in “Analysis and Governance for Sustainable Development”. Musco is the director of the graduate degree program in Planning and Policies for Cities, Territory and Environment and director of the Erasmus Mundus Master Course on Maritime Spatial Planning. He is also Deputy Director for Research and member of the board of directors for CORILA Consortium for Coordination of research activities concerning the Venice Lagoon System.

Supporter of a multidisciplinary approach to city and environmental planning, Musco focuses his research activity on the relationship between urban planning, sustainability and resilience, with particular attention to sustainable urban regeneration processes and the implementation of local plans and their contribution to “climate-proof planning”.

**Dr. Steffen Lehmann**  
*Professor, Architecture and Urbanism, University of Nevada*



Dr. Steffen Lehmann is a Professor of Architecture and Urbanism at the University of Nevada where he is also Founding Director of the Urban Futures Lab. He holds an AA Dipl. from the Architectural Association School of Architecture London, and a Ph.D. from the TU-Berlin. For 30 years, he has researched the relationship between urban design, high-performance architecture, sustainability and climate change, and his published books have become standard reading at architecture and planning schools worldwide. For more information: [www.city-leadership.com](http://www.city-leadership.com)



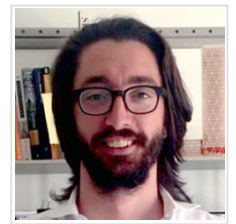
**Luke Leung**  
Principal, SOM

Luke is a LEED Fellow; ASHRAE Fellow; ASHRAE Epidemic Task Force Commercial Team Leader; ASHRAE Task Force for Building Decarbonization Embodied Carbon/LCA work group leader; ASHRAE Directors-at-Large; Carbon Leadership Forum MEP 2040 founding member; City of Chicago Decarbonization Task Force; AIA COVID-19 Task Force, BOMA Toronto Health Committee Co-Chair; Chair of ASHRAE "Environmental Health Committee"; ASHRAE Distinguished Lecturer; Former Chair of ASHRAE TC 9.12 on Tall Buildings; Former Board of Directors for USGBC, Illinois; Industry Advisory Board for IN2 start-up incubator program with US National Renewable Energy Laboratory. He is the wide firm Principal of the Sustainability Engineering Studio for Skidmore, Owings and Merrill LLP. His work includes Burj Khalifa, the current world's tallest building, and other four of the top 20 tallest buildings in the world. . Other work also included General Motors Global Headquarters, Beijing Finance Street, US Census Bureau, US Air Force Academy CCLD, US Embassy in Beijing, BBVA Tower in Mexico City, LG Art Hall in Seoul, Korea; Master planning of XiongAn – the millennium plan of China, and numerous other significant tall and large projects.



She is a faculty affiliate of the Dornsife School of Public Health's Urban Health Collaborative and a member of the strategic council for the school's Ubuntu Center on Racism, Global Movements, and Population Health Equity. Dr. Schinasi's current research is at the intersection of climate vulnerability, climate adaptation, and health equity. She is particularly interested in conducting research to inform the design of inclusive climate adaptation strategies that promote health equity. Among her recent publications are ones describing links between structural racism and urban heat vulnerability; extreme heat and childhood asthma morbidity; and green spaces and neighborhood gentrification processes.

**Dario Trabucco, PhD**  
*Associate Professor,  
Building Technology,  
Università Iuav di Venezia*



Dario Trabucco, PhD., is an associate professor in Building Technology at IUAV. He graduated cum laude from IUAV in 2004 and obtained a PhD in Building Technology from the University of Ferrara in 2009. He served as Tenured Researcher from 2012 to 2018, specializing in the design of tall buildings, LCA analysis, and elevator technologies.

He spent 12 months at the Illinois Institute of Technology in Chicago, working at the Council on Tall Buildings and Urban Habitat (CTBUH) until February 2014. Since 2015, Dario has been a CTBUH Research Manager, serving as PI in most of the CTBUH Research Projects through an official partnership between IUAV and CTBUH. His research activity focuses on different aspects of tall building design, construction and management. His research activity is also focused on the integration of elevators in the accessibility of buildings and urban areas. He is the author and co-author of over 80 scientific publications.

**Dr. Leah Schinasi**  
*Assistant Professor,  
Environmental and  
Occupational Health,  
Dornsife School of Public  
Health, Drexel University*



Leah Schinasi is an environmental and occupational epidemiologist and an Assistant Professor of Environmental and Occupational Health at Drexel University's Dornsife School of Public Health.

## Panel II: Opening Remarks & Moderators

**Ignazio R. Marino, MD, ScD**  
Professor of Surgery, Sidney Kimmel Medical College, Executive Vice President for International Innovative Strategic Ventures, Thomas Jefferson University and Jefferson Health, Executive Director, Jefferson Italy Center, Former mayor of Rome



Ignazio R. Marino, MD, ScD is executive vice president of Jefferson International Innovative Strategic Ventures. He is a trailblazer in transplant medicine who has also held high public office as a senator of the Republic of Italy and mayor of Rome. Born in Genoa, Italy, Dr. Marino earned a degree in medicine and surgery from the Catholic University of Rome and then trained at the two most prestigious transplant centers in the world: the Transplantation Institute of Cambridge University and the Thomas E. Starzl Transplantation Institute at the University of Pittsburgh. In 1989, he accepted a position at the University of Pittsburgh, where he was appointed professor of surgery. He has been associate director of the National Liver Transplant Center of the Veterans Affairs Medical Center of Pittsburgh, director of the European Medical Division of the University of Pittsburgh Medical Center, and founding director and CEO of the Mediterranean Institute for Transplantation and Advanced Specialized Therapies. At Jefferson, he is professor of surgery and has previously served as director of the Division of Liver Transplantation and Hepatobiliary Surgery as well as director of the Division of Transplantation.

**Carlo Federico dall'Omo**  
Doctoral Researcher,  
Università Iuav di Venezia



Carlo Federico dall'Omo is a PhD candidate at Università Iuav di Venezia. He is a researcher in the Planning & Climate Change Lab, working on European projects oriented towards territorial cooperation for adaptation to the impacts of climate change.

**Katie DiSantis, PhD, MPH**  
Associate Professor, Public Health, Thomas Jefferson University



Dr. DiSantis holds a Doctorate in Public Health and MPH in Community Health Education from Temple University, and a Bachelor's degree in Biobehavioral Health from Penn State University. Her major research interests focus on identifying and analyzing the social, behavioral, and neighborhood factors that impact infant feeding behaviors and childhood obesity risk. Dr. DiSantis' recent research assesses the healthfulness of family food purchases and the influence of school and neighborhood food environments on child weight status. She has published in top public health, medical, and nutrition journals including Pediatrics, International Journal for Behavioral Nutrition and Physical Activity, American Journal of Public Health, American Journal of Preventative Medicine, Appetite, and the International Journal of Obesity.

**Yocasta Lora**  
Associate State Director of  
Advocacy & Community  
Engagement, AAP  
Pennsylvania



After receiving a bachelor degree from La Salle University, Lora worked in HR and Finance at Flynn & O'Hara, a uniform company. Lora then went on to serve as the Director of Programs for the Greater Philadelphia Hispanic Chamber of Commerce. At the chamber of commerce, Lora managed and supported the two largest programs at the chamber — the Small Business Development and Education program and the Professional Mentoring Network program. In 2015, she joined AARP. Lora works to develop strategic partnerships with community organizations, local government, and business in the Southeast region to deliver impact, relevance and engagement to the 50+ population.

