



*BE THE
BREAKTHROUGH*

THOMAS JEFFERSON UNIVERSITY

ACADEMIC PROGRAMS



- ACCOUNTING (BS)
- ANIMATION AND DIGITAL MEDIA (BS)
- ARCHITECTURAL STUDIES (BS)
- ARCHITECTURE (BARCH)
- BIOCHEMISTRY (BS)
- BIOLOGY (BS)
- BIOPSYCHOLOGY (BS)
- CHEMISTRY (BS)
- COMMUNICATION (BS)
- CONSTRUCTION MANAGEMENT (BS)
- ENGINEERING (BSE)
- EXERCISE SCIENCE (BS)
- FASHION DESIGN (BS)
- FASHION MERCHANDISING & MANAGEMENT (BS)
- FINANCE (BS)
- HEALTH SCIENCES (BS)
- ACCELERATED 3+2 HEALTH SCIENCES (BS)/ MS ATHLETIC TRAINING (MS)
- ACCELERATED 3+2 HEALTH SCIENCES (BS)/ MS COMMUNITY & TRAUMA COUNSELING (MS)
- ACCELERATED 3+2 HEALTH SCIENCES (BS)/ MS MEDICAL LABORATORY SCIENCES & BIOTECHNOLOGY (MS)
- ACCELERATED 3+2 HEALTH SCIENCES (BS)/ MS NUTRITION AND DIETETIC PRACTICES (MS)
- HEALTH SCIENCES: PRE-PHARMACY (BS)
- INDUSTRIAL DESIGN (BS)
- INTERDISCIPLINARY STUDIES (BS)
- INTERIOR DESIGN (BS)
- INTERNATIONAL BUSINESS (BS)
- LANDSCAPE ARCHITECTURE (BLA)
- LAW AND SOCIETY (BS)
- MANAGEMENT (BS)
- MARKETING (BS)
- MECHANICAL ENGINEERING (BSE)
- MEDICAL IMAGING & RADIATION SCIENCES (BS)
 - CARDIAC SONOGRAPHY
 - COMPUTER TOMOGRAPHY (CT)
 - GENERAL SONOGRAPHY
 - INVASIVE CARDIOVASCULAR TECHNOLOGY (ICVT)
 - MAGNETIC RESONANCE IMAGING (MRI)
 - MEDICAL DOSIMETRY
 - RADIATION THERAPY
 - RADIOGRAPHY (X-RAY)
 - VASCULAR SONOGRAPHY
- MEDICAL LABORATORY SCIENCES (BS)
 - BIOTECHNOLOGY
 - CYTOTECHNOLOGY & CELL SCIENCES
 - MEDICAL LABORATORY SCIENCE
- NURSING, TRADITIONAL (BSN)
- PRE-MEDICAL STUDIES (BS)
- PROFESSIONAL AND STRATEGIC WRITING (BS)
- PSYCHOLOGY (BS)
- ACCELERATED 3+2 PSYCHOLOGY (BS)/ COMMUNITY & TRAUMA COUNSELING (MS)
- TELEHEALTH FACILITATOR (CERTIFICATE)
- TEXTILE DESIGN (BS)
- TEXTILE PRODUCT SCIENCE (BS)
- VISUAL COMMUNICATION DESIGN (BS)

UNDERGRADUATE SECOND-DEGREE SEEKING PROGRAMS

- NURSING, FULL-TIME ACCELERATED COURSEWORK TRACK - 1 YEAR
- NURSING, FULL-TIME ACCELERATED COURSEWORK TRACK - 2 YEAR
- POSTBACCALAUREATE PRE-PROFESSIONAL PROGRAM (P4) 1 & 2 YEAR OPTIONS



- EAST FALLS
- CENTER CITY
- CENTER CITY / DIXON



An education that is active, collaborative, and based on *real-world experience.*

ACTIVE

At Jefferson, you might work in state-of-the-art studios to test design solutions for the cities of 2050 or in simulation labs that give you practice working with patients. You might fabricate textiles that will lead the future of fashion or create a satellite that can send those ideas into space. You might test your simulation training in clinical rotations or support city-wide vaccination efforts. No matter your program of study, you will practice your learning first-hand.

COLLABORATIVE

Magic happens when students from different programs work together to solve industry challenges.

REAL-WORLD

At Jefferson, the best stories are true stories. Our students learn and work across the globe.



No matter what you study at Jefferson, Nexus Learning™ is how you'll study it.

It fuses design thinking with hands-on execution. You will practice transdisciplinary collaboration with students across majors to solve problems for Verizon or NASA. You can help respond to national crises using cutting-edge equipment, mastering the art of intellectual risk-taking. All of this is Nexus Learning™. And that's what will give you the tools, connections and confidence to reach your full potential.



Start with excellence. Then go beyond.

For us, excellence is both the honor we've earned and our promise to you.

Our academic programs are internationally recognized. We have top fashion design programs in the world, award-winning architecture students, and roots in medicine, health and science education dating back to 1824. Our tradition of excellence is reflected in the faculty who give you the benefit of their experiences as industry leaders and educators.

From day one, you'll be treated as a professional in your field, with opportunities to collaborate across programs of study on real-world industry projects alongside your peers from all over the University. No matter what you pursue as your major, you'll study curiosity, creativity and innovation as you create what's next. You'll know the course, set the pace and be miles ahead of the competition.



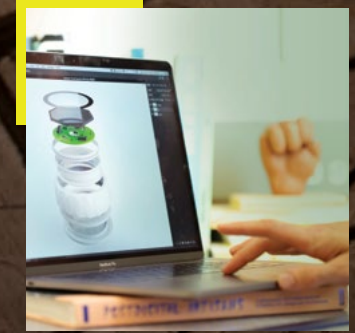
Architecture

Reimagine your city's infrastructure. Develop the next system for sustainable engineering. And shape the spaces that facilitate wellness.



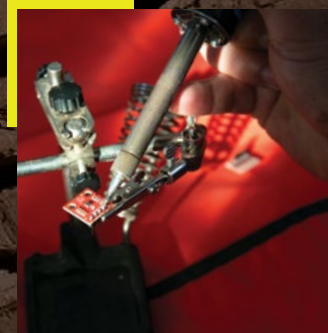
Business

Help small businesses plan for the future. Manage the finances of a Fortune 500 company. And close the deals that will open a future of possibility.



Design

Create graphic design that can change—and even save—lives. Develop products and bring them to market. And build a workspace to inspire a new workforce.



Engineering

Make green homes greener. Design a water-delivery system that saves lives. And find solutions to global problems before they start.



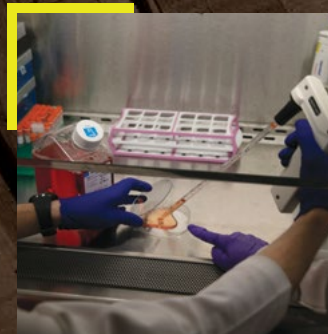
Fashion & Textiles

Merge sustainability and style. Forge connections between technology and textiles. And make what's next unlike anything that's come before.



Health & Medicine

Develop healthcare solutions for at-risk communities. Push the patient-centric approach to care. And preserve wellness for generations to come.



Science

Decrease the spread of global disease. Develop the science that will reshape and improve the world. And reimagine what humankind can accomplish.



Social Science

Plan the next content-delivery system. Spot sociological trends that will influence legislation. And ensure that a future driven by A.I. never loses its humanity.

ATHLETICS

With 17 men's and women's NCAA Division II teams based on the East Falls Campus, we play as hard as we work.

MEN'S TEAMS

- BASEBALL
- BASKETBALL
- CROSS COUNTRY
- GOLF
- SOCCER
- TENNIS
- TRACK & FIELD

WOMEN'S TEAMS

- BASKETBALL
- CROSS COUNTRY
- GOLF
- LACROSSE
- ROWING
- SOCCER
- SOFTBALL
- TENNIS
- TRACK & FIELD
- VOLLEYBALL



College is more than an education and a degree.

It's an experience. You'll work hard, and you'll make friends who will be with you forever. You'll hunker down, and you'll let loose.

If there's an activity you enjoy, a cause you're passionate about or a community you need to connect with, chances are there's already a group of Rams ready to welcome you in.



GORAMS

SUPPORT

ACADEMIC

Each campus offers dedicated libraries that support academic programs in each location. At our East Falls and Center City Campuses, students can also find peer and professional tutoring support.

FITNESS

Each campus offers students access to gym and recreation opportunities in state-of-the-art facilities.

WELLNESS

Students have access to health services for everything from emergency medical treatment and appointments to advice on healthy sleep habits and counseling services.

CAREER

Our Center City and East Falls Campuses feature career services that are ready to help you find internships, clinical placements and job opportunities with top organizations in Philadelphia and around the world.

CLUBS & ORGANIZATIONS

- Band/Jazz Band/Instrumental Group
- Choral Group
- Club and Intramural Sports
- Community Service
- Dance
- Debate
- Environmental Awareness
- Fitness and Well-Being
- Gaming
- Honors
- Leadership and Success
- LGBTQIA+
- Multicultural Awareness
- Professional Program-Specific Clubs
- Radio
- School Spirit
- Social Sororities/Fraternities
- Spirituality
- Student Government Association
- Theater
- *and many more!*



JEFFERSON CAMPUSES

Our campus locations span the Philadelphia region. From studio to laboratory, from active learning spaces to student clubs, Jefferson has a distinctive cultural breadth that adds even more value to your college experience.

CENTER CITY CAMPUS

The Center City Campus is located in the heart of Philadelphia. The University shares this campus with Thomas Jefferson University Hospital and Jefferson Hospital for Neuroscience, giving it the distinct feel of an academic medical center. Outside class, students participate in organizations and activities on campus, and are within walking distance of local cuisine, arts and entertainment, the historic district and countless green spaces around the city. SEPTA and PATCO stations are nearby, making this campus convenient for commuters. The Scott Memorial Library, situated in the middle of campus, offers access to knowledge-based resources, including books, e-books, articles, videos and journals, study space, computers and physical models.



DIXON CAMPUS

Jefferson's Dixon Campus, located in Horsham, PA, is aligned with best practices in designing a future-focused academic space. At 42,000 square feet, nearly one-third of the facility is dedicated to a state-of-the-art simulation center, where both undergraduate and graduate students engage in complex clinical scenarios that parallel, anticipate and amplify real-life situations. This campus also includes a 200-person tiered lecture hall and three 80-seat classrooms that support the latest innovations in educational technology. A dedicated library, collaborative learning and study spaces, a student lounge and a central concourse support faculty-student and student-student engagement at the highest level. The campus is adjacent to a trail leading to a park. There is ample parking on campus and it is close to public transportation.



EAST FALLS CAMPUS

The East Falls Campus boasts 100 acres of scenic, tree-lined space. Only 10 minutes from Center City Philadelphia's museums, restaurants and activities, and adjacent to the Manayunk business district, the campus feels like a park and has access to all that the city has to offer. East Falls Campus is home to Jefferson's 17 Men's and Women's NCAA Division II teams and is a vibrant community full of exciting events, specialized clubs, internships and global opportunities. The campus also features the Paul J. Gutman Library, numerous individual and group study spaces, an array of studios, the Academic Success tutoring center, two dining halls and much more. The campus is adjacent to Wissahickon Park, has ample parking and is close to public transportation.





Fast Facts



8,200

Total Jefferson Students

68,500

Alumni

160+

Student and Community Organizations

24+

Study Away Locations

About Philadelphia

6th

Most Populous City in the U.S.



300

Neighborhood Parks, Rec Centers and Playgrounds and Almost

100

Museums

8th

Largest College Town in the U.S.

Home to Headquarters of

13

Fortune 500 Companies

AROUND PHILADELPHIA

Professional, cultural and recreational opportunities from some of the top destinations on the East Coast are close enough for a day trip:

- JERSEY SHORE, NJ: 1.5 HOURS
- NEW YORK CITY, NY: 2 HOURS
- BALTIMORE, MD: 2 HOURS
- WASHINGTON, D.C.: 2.5 HOURS
- OCEAN CITY, MD: 3 HOURS

With areas of study in **architecture, business, design, engineering, fashion and textiles, health, science and social science**, our professional education programs enable you to earn your degree in an interactive environment. At Jefferson, you will gain real-world experience and connections that prepare you to lead in your field of study.



Whether you are coming from community college or another university, or earning a second bachelor's degree, we can help you with details, deadlines and decisions.

To get started, submit your application at Jefferson.edu/UndergradApply

To get a closer look at Jefferson and your program of interest, explore or visit options at Jefferson.edu/UndergradVisit

TRADITIONAL TRANSFER PROGRAMS

Join the nearly 20 percent of undergraduates who are transfer students at Jefferson. Our admissions team is here to support you throughout the transfer process.

Spring Priority Application Deadline: December 1
Fall Priority Application Deadline: June 1

Some transfer programs at Jefferson have specific prerequisite coursework requirements and unique admissions deadlines. Application instructions for the academic offerings listed below are available on each program's website.

Nursing, Traditional (BSN)

Fall Priority Application Deadline: January 15
Fall Application Deadline: May 15

For more information about specific Nursing, Traditional (BSN) application requirements, visit Jefferson.edu/BSNApp

Medical Imaging & Radiation Sciences (BS)

Fall Application Deadline: July 15

For more information about specific Medical Imaging & Radiation Sciences (BS) application requirements, visit Jefferson.edu/MIRSAApp

Medical Laboratory Sciences & Biotechnology (BS)

Fall Application Deadline: July 15

For more information about specific Medical Laboratory Sciences & Biotechnology (BS) application requirements, visit Jefferson.edu/MLSBApp

Telehealth Facilitator (Certificate)

Application Deadline: September 1

For more information about specific Telehealth Facilitator (Certificate) application requirements, visit Jefferson.edu/TelehealthApp

SECOND-DEGREE SEEKING PROGRAMS

Our second-degree seeking program options are for students who have already earned a bachelor's degree and are interested in completing a second bachelor's degree program as a full-time student. Application instructions for the academic offerings below are available on each program's website.

Full-time Accelerated Coursework Track - 1 Year

The Full-time Accelerated Coursework Track (FACT)-1 Year program is designed for students who already hold a bachelor's degree in a field other than nursing.

Pre-Fall Priority Application Deadline: November 15
Pre-Fall Application Deadline: February 15

For more information about specific Full-time Accelerated Coursework Track (FACT)-1 Year application requirements, visit Jefferson.edu/FACT1App

Full-time Accelerated Coursework Track - 2 Year

The Full-time Accelerated Coursework Track (FACT)-2 Year program is designed for students who already hold a bachelor's degree in a field other than nursing.

Fall Priority Application Deadline: January 15
Fall Application Deadline: May 15

For more information about specific Full-time Accelerated Coursework Track (FACT)-2 Year application requirements, visit Jefferson.edu/FACT2App

Postbaccalaureate Pre-Professional Program (P4)

This is a "career changer program" intended for students who have a limited science background. If you have completed more than half of the prerequisite coursework for medical school, or if you have taken the MCAT, you are not eligible for this program.

Application Deadline P4 1-Year: April 30
Application Deadline P4 2-Year: July 31

For more information about applying to Postbaccalaureate Pre-Professional Program (P4), please visit Jefferson.edu/P4App

Thomas Jefferson University
Undergraduate Admissions
4201 Henry Avenue
Philadelphia, PA 19144

215-951-2800
enroll@jefferson.edu
Jefferson.edu/Undergrad



Jefferson

Thomas Jefferson University
HOME OF SIDNEY KIMMEL MEDICAL COLLEGE