

# The Academic Success Center

Tutoring Center and Academic Advising Services

# Academic Success Center


- Office Description
- Placement Exams
  - Writing Placement
  - Math Placement
  - Transfer Credits
- Reading the Schedule
  - Decoding the schedule
  - Hallmarks and Honors
  - Checksheets and Example courses
- Academic Support and Resources
  - First Year Advising
  - DegreeWorks
  - Tutoring Resources
- Important Things to Remember
- Academic Success Center Contact Information
  - Staff Introductions



We are excited to begin this journey with you for this upcoming Fall 2022 semester here in the Academic Success Center!

We provide many forms of Learning Support and Tutoring for you throughout your student career at Jefferson, including Professional Writing, Math, Science, Design, and Academic Skills, as well as Peer Tutoring for many subjects.

For First-Year Advising, you will be assigned your Academic Advisor closer to the start of term. Your Advisor will reach out to you and introduce themselves within the 1<sup>st</sup> week of classes; they are faculty members who also teach in your College.



- As a first-year student, you will be enrolled in your first semester courses according to the requirements for your major.
- We require that you complete an online Math Test and a Writing Placement Process so that we can place you into appropriate level of math for your major and first-year level writing courses.
- If you haven't already done so, you can find the materials online by accessing the new student page on the Jefferson website at [EastFalls.Jefferson.edu/AcceptedStudents](http://EastFalls.Jefferson.edu/AcceptedStudents) and clicking on the Summer Orientation links.
  - You can also access them by visiting [EastFalls.Jefferson.edu/WebAdvisor](http://EastFalls.Jefferson.edu/WebAdvisor), logging in with your Jefferson login and password, and completing the components titled Math Questionnaire and Writing Placement Essay.

## You will be placed into one of the following classes:

- **WRTG-100: Intro to Academic Writing**
  - 3 credits
  - This will count as a free elective if you have room for it
  - Students usually take WRIT-101 after successfully completing WRIT-100
- **WRIT-101: Writing Seminar 1**
  - 3 credits
- **WRIT-101S: Writing Seminar 1, Studio: Introduction to Academic Written Communication,**
  - 4 credits
  - Similar to WRIT-101, but moves at a slower pace, requires the writing of 4 assignments as opposed to 5, meets 3 times a week instead of 2
  - The 3<sup>rd</sup> class session is a studio session that focuses on the conventions of university level writing including: the language of scholarship, critical reading, genre analysis, intensive revision
- All students will then take **WRIT-201: Writing Seminar 2**
  - you may be placed here if you come in with Writing transfer/AP credit.

Math placement depends on your math placement results, as well as the math requirements for your specific major. Depending on your results you may have been placed into the one of the following:

- **MATH-099: Fundamentals of College Mathematics**
  - This is a 3 credit course for Financial Aid purposes, but does not go towards graduation requirements
  - Students must earn a “C” or better
- **MATH-100: College Algebra**
  - 3 credits
  - Same content as MATH-101 with more dedicated time
- **MATH-101: College Algebra**
  - 3 credits
- **MATH-102: Pre-Calculus**
  - 3 credits
- **MATH-103: Applied Calculus**
  - 3 credits
- **MATH-110: Pre-Calculus for Science and Engineers**
  - 4 credits
  - A more intensive Pre-Calc for those in majors with extended Math study
- **MATH-111: Applied Calculus**
  - 4 credits
  - A more intensive Calculus for those in majors with extended Math study and moving into MATH-112: Calculus 2

- **Think you already have course credit for Writing or Math?**
  - We accept Advanced Placement (AP), International Baccalaureate (IB), and/or Dual Enrollment courses
  - Check how your AP Scores would equate: [www.jefferson.edu/life-at-jefferson/handbooks/policies/undergraduate-policies/advanced-placement.html](http://www.jefferson.edu/life-at-jefferson/handbooks/policies/undergraduate-policies/advanced-placement.html)
- **Send your scores to Admissions ASAP!**
  - Don't assume your High School sent your AP Scores or College transcripts for you
- **Schedule changes**
  - We will change your schedule once your official documents have been received, and we will notify you of the change to your university e-mail
- **Questions?**
  - Contact Gina May at [Gina.May@Jefferson.edu](mailto:Gina.May@Jefferson.edu) or Deborah Kaminski at [Deborah.Kaminski@Jefferson.edu](mailto:Deborah.Kaminski@Jefferson.edu)

### How to read the schedule:

- Example: FYS-100-8, T 4-4:50
  - First Year Seminar-100- section #8
  - Meets on Tuesdays only from 4 p.m. to 4:50 p.m.

Instructors, buildings, and classroom assignments are added closer to the start of the semester

### Check your schedule often for changes!

- Schedules for Fall 2022 are subject to change throughout the summer

### Class days:

- M- Monday
- T- Tuesday
- W- Wednesday
- R- Thursday
- F- Friday
  - You may have classes M/W/F, meaning that class meets every Monday, Wednesday and Friday
  - Or, you may have a class that meets only on R, which means you only go to that class on Thursdays



- Use the Course Catalog to look up course descriptions and learn course abbreviations
  - <http://www.eastfalls.jefferson.edu/catalog/CourseDescriptions/index.aspx>
- You should be enrolled in at least one Hallmarks Gen Ed course
- You are in a First-Year Seminar (FYS) course
  - All incoming freshman will participate in the FYS Course. This course meets once a week and is an opportunity to learn and practice strategies that will enable their success in college. Students will create personal, professional, and academic goals, as well as success strategies for learning and career development.
- Notice that you are expected to take courses in your major immediately
- You will work with your first-year advisor to create a semester plan for every semester following your first



## Hallmarks Program

- General education at Jefferson focuses on eight key qualities that are essential for your personal and professional success. Our Hallmarks Program identifies and develops these qualities as you advance through your major, your general education core curriculum (the Hallmarks Core), and your co-curricular activities (internships, study abroad, student organizations, etc.), preparing you to be a leader in your field.
- With the goal of imagining and realizing better futures, the Hallmarks Program at Jefferson empowers students to:
  - **Question** based on curiosity and confidence
  - **Adapt** based on contextual understanding and global perspective
  - **Contribute** based on empathy and collaboration
  - **Act** based on initiative and ethical reflection
- For more information, please visit: <https://www.jefferson.edu/university/hallmarks-program.html>

## Honors Program

- Honors Institute students are selected through the Admissions Application process. As applicants are reviewed for admission to Jefferson, some students may emerge as clear Honors candidates based upon a comprehensive review of the materials submitted in their University application. Factors considered include academic achievements such as high school coursework, cumulative GPA and standardized test results. Demonstrated accomplishments and experiences outside the classroom are also recognized. These students are notified of their acceptance into Honors at the same time they receive their acceptance to the University.
- Contact: Marcella McCoy-Deh, Director, [Marcella.McCoy-Deh@Jefferson.edu](mailto:Marcella.McCoy-Deh@Jefferson.edu) or Karima Bouchenafa, Assistant Director, [Karima.Bouchenafa@Jefferson.edu](mailto:Karima.Bouchenafa@Jefferson.edu)

- The University uses “checksheets” as guidelines to follow for each major on which courses to take every semester
  - Checksheets for all majors can be found here: <https://www.jefferson.edu/life-at-jefferson/handbooks/checksheets.html> Please note that some courses are only offered once a year
- Also note that some courses have prerequisite requirements, meaning that you must complete step 1 of a course before moving on to step 2
  - You’ll see these noted in (parenthesis)
  - Example: **PSYC-101: Intro to Psychology** must be successfully completed before taking any upper level Psychology courses
- Take a look at your major’s checksheet to see the courses you will be required to complete!

## You will be assigned a First-Year Advisor

- Advisors are both faculty members and academic advisors
- Advisors are assigned by major and are proactive in outreach to students
- Student begin immediately with a professional contact in their area of interest
- Advisors guide students in course planning, goal setting, and making responsible choices for their academic careers

## Starfish

- Starfish assists with the adjustment to college- it is a way for your faculty to let you know if they have concerns about your progress in your courses, or give you kudos when you are succeeding
- Advisors utilize the Starfish early alert/kudos system

## Drop/Add

- Advisors assist students with dropping courses and adding them, especially in the first semester when an advisors signature is required to make changes
- Students can speak with their advisor about schedule changes

- DegreeWorks is an easy-to-use online set of academic planning tools that assists students and advisors in tracking and planning academic progress and ultimate completion of degree requirements
- DegreeWorks provides students meaningful and consistent direction and provides advisors and student record managers with up-to-date curriculum and course completion information. It also helps to identify outstanding requirements needed for graduation.
- You can access DegreeWorks in BannerWeb

## Writing

- Professional Writing Tutors are available for 1:1 appointments
- Workshops are also frequently offered for students
  - Workshop topics include: Avoiding Plagiarism, Paraphrasing and Research Strategies, and Active Reading for Writing Purposes

## Math

- Professional and Peer Tutors available for 1:1 appointments
- Study Groups and Professional Drop-in Tutoring available for all math courses

## Content Areas

- Peer and Professional Tutoring available for the majority of subjects

## Academic Success Strategies

- Professional Tutoring available for 1:1 appointments for Learning Strategies
  - Workshop topics include: Time Management, Note-Taking Skills, Study-Skills, Organizational Skills, and Learning Styles
- Tutoring is available throughout your entire academic career at Jefferson. For more information, please visit:  
<http://www.eastfalls.jefferson.edu/successcenter/index.html>

## IMPORTANT THINGS TO REMEMBER

### Schedule Availability:

- Your Fall 2022 schedule will be available on BannerWeb
- *Your schedule is subject to change throughout the summer, so keep checking!*

### University Calendar:

- Classes begin: Monday, August 22
- Last day to ADD: Monday, August 29
- Last day to DROP: Wednesday, August 31
- <http://www.eastfalls.jefferson.edu/registrar/calendar/index.html>

### University e-mail:

- Begin checking your Jefferson University e-mail
- All communication from Jefferson, including schedule updates, will come through your university email account

### Have questions?

- Contact us!

# The Jefferson Student Portal

- **Your Digital Doorway to University Resources**
  - University news and announcements.
  - Connect to your student email account.
  - See course content from Canvas
  - Review your information including financial aid, class schedules, account balances and more.
  - Access to other University offices
  - Plus, much more
- **Log in with your Jefferson Campus Key and password.**

- **Mobile native versions available on the Apple Store and Google Play Store by searching for “Jefferson Student Portal”**



- **Also available on the web at**  
<https://studentportal.jefferson.edu>



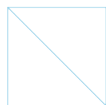
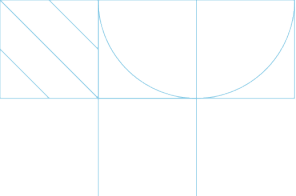
- **TUTORING**

- Haggar Hall, 1st floor
- Monday - Thursday, 9 a.m. - 8 p.m.
- Fridays, 9 a.m. - 5 p.m.
- Weekend Hours available for Professional Writing Tutoring
- Tutoring begins Week 2 of the semester
- 215-951-2799
- [TJU\\_EF\\_Tutoring@Jefferson.edu](mailto:TJU_EF_Tutoring@Jefferson.edu)

- **FIRST YEAR ADVISING**

- Haggar Hall, 2nd floor
- Monday - Friday, 9 a.m. - 5 p.m.
- 215-951-2730
- [TJU\\_EF\\_Advising@Jefferson.edu](mailto:TJU_EF_Advising@Jefferson.edu)

- **EASTFALLS.JEFFERSON.EDU/  
LEARNING**



## Megan Mills

DIRECTOR, ACADEMIC SUCCESS  
CENTER AND  
ASSISTANT PROVOST  
FOR STUDENT SUCCESS &  
UNDERGRADUATE RETENTION

Megan.Mills@Jefferson.edu



## Gina May

ASSOCIATE DIRECTOR,  
ADVISING AND RETENTION

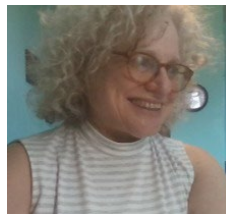
Gina.May@Jefferson.edu



## Ellen Knapp

ASSISTANT DIRECTOR,  
MATH SERVICES

Carol.Quinn@Jefferson.edu



## Melissa Gohn

STARFISH COORDINATOR

Melissa.Gohn@Jefferson.edu



## Carol Quinn

OFFICE COORDINATOR

Carol.Quinn@Jefferson.edu



## Deborah Kaminski

TRANSFER ADVISOR

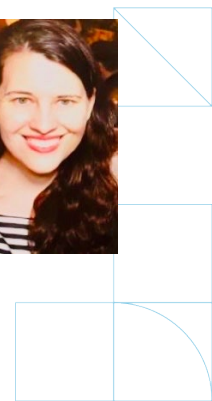
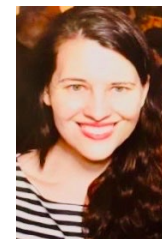
Deborah.Kaminski@Jefferson.edu



## Lauren-Elise Kadel

ASSISTANT DIRECTOR,  
WRITING SERVICES

Lauren-Elise.Kadel@Jefferson.edu





**Jefferson**

Thomas Jefferson University