

The slide features decorative geometric patterns in the top corners. The top-left corner has a vertical grid of squares, with some squares containing diagonal lines or circles. The top-right corner has a grid of squares, with some squares containing diagonal lines or circles, and a larger square containing a circle divided into four quadrants.

The Academic Success Center

Tutoring Center and Academic Advising Services

- We require that you complete a Math Test and Writing Placement Process so that we can place you into appropriate level of math for your major and first-year level writing.
- **Scheduling Questions?** There will be someone from the ASC available to work with you today from 3 p.m. to 5 p.m.

Based on your Writing Declaration at the end of the Writing Placement Process, you are placed into one of the following classes:

WRIT-101: Writing Seminar 1 (3 Credits)

- This course counts towards the Writing Requirement. After successfully completing this class, students will take WRIT-201.

WRIT-101 Studio (4 Credits)

- This course combines WRIT-101 with extra time (one class per week) to focus on sharpening your writing skills by reviewing core concepts in WRIT-100. It allows you more time to work on your writing in a focused class environment.
- This course counts towards the Writing Requirement. After successfully completing this class, students will take WRIT-201.

WRIT-100: Intro to Academic Writing (3 Credits)

- This will count as a free elective if you have room for an elective.
- Students take WRIT-101 after successfully completing WRTG-100

*Note: Writing Seminar 2 (WRIT-201) is not part of the Placement Process

- You may be placed here if you come in with Writing transfer/AP credit.

Check out Canvas (Canvas.Jefferson.edu) for the full Course Descriptions for Writing.

Math placement depends on your results, as well as the math requirements for your specific major. There are many options:

- **MATH-099: Fundamentals of College Mathematics**
 - This is a 3 credit course for Financial Aid purposes, but does not go towards graduation requirements
 - Students must earn a "C" or better
- **MATH-100: College Algebra**
 - 3 credits
 - Same content as MATH-101 with more dedicated time
- **MATH-101: College Algebra**
 - 3 credits
- **MATH-102: Pre-Calculus**
 - 3 credits
- **MATH-103: Applied Calculus**
 - 3 credits
- **MATH-110: Pre-Calculus for Science and Engineers**
 - 4 credits
 - A more intensive Pre-Calc for those in majors with extended Math study
- **MATH-111: Calculus I**
 - 4 credits
 - A more intensive Calculus for those in majors with extended Math study and moving into MATH-112: Calculus 2

Hallmarks Program

- General education at Jefferson focuses on eight key qualities that are essential for your personal and professional success. Our Hallmarks Program identifies and develops these qualities as you advance through your major, your general education core curriculum (the Hallmarks Core), and your co-curricular activities (internships, study abroad, student organizations, etc.), preparing you to be a leader in your field.
- With the goal of imagining and realizing better futures, the Hallmarks Program at Jefferson empowers students to:
 - **Question** based on curiosity and confidence
 - **Adapt** based on contextual understanding and global perspective
 - **Contribute** based on empathy and collaboration
 - **Act** based on initiative and ethical reflection
- For more information, please visit: <https://www.jefferson.edu/university/hallmarks-program.html>

Honors Program

- Honors Institute students are selected through the Admissions Application process. As applicants are reviewed for admission to Jefferson, some students may emerge as clear Honors candidates based upon a comprehensive review of the materials submitted in their University application. Factors considered include academic achievements such as high school coursework, cumulative GPA and standardized test results. Demonstrated accomplishments and experiences outside the classroom are also recognized. These students are notified of their acceptance into Honors at the same time they receive their acceptance to the University.
- Contact: Marcella McCoy-Deh, Director, Marcella.McCoy-Deh@Jefferson.edu or Karima Bouchenafa, Assistant Director, Karima.Bouchenafa@Jefferson.edu

- Use the Course Catalog to look up course descriptions and learn course abbreviations
 - <http://www.eastfalls.jefferson.edu/catalog/CourseDescriptions/index.aspx>
- You should be enrolled in at least one Hallmarks Gen Ed course
- You are in a First-Year Seminar (FYS) course
 - All incoming freshman will participate in the FYS Course. This course meets once a week and is an opportunity to learn and practice strategies that will enable their success in college. Students will create personal, professional, and academic goals, as well as success strategies for learning and career development.
- Notice that you are expected to take courses in your major immediately
- You will work with your first-year advisor to create a semester plan for every semester following your first

Class days:

- M- Monday
- T- Tuesday
- W- Wednesday
- R- Thursday
- F- Friday
 - You may have classes M/W/F, meaning that class meets every Monday, Wednesday and Friday
 - Or, you may have a class that meets only on R, which means you only go to that class on Thursdays
- Instructors, buildings, and classroom assignments are added closer to the start of the semester

How to read the schedule:

- Example: FYS-100-8, T 4-4:50
 - First Year Seminar-100- section #8
 - Meets on Tuesdays only from 4 p.m. to 4:50 p.m.
- Classes can run for the day from 8 a.m. to 10 p.m.

Check your schedule often for changes!

- Schedules for Fall 2021 are subject to change throughout the summer
- We are expecting AP/Dual enrollment credits to come in soon. If your student has the unofficial scores, please see us this afternoon

- The University uses “checksheets” as guidelines to follow for each major on which courses to take every semester
 - Checksheets for all majors can be found here:
<http://www.philau.edu/catalog/checksheets.html>
 - Take a look at your major’s checksheet to see the courses you will be required to complete!
- Please note that some courses are only offered once a year
- Also note that some courses have prerequisite requirements, meaning that you must complete step 1 of a course before moving on to step 2
 - You’ll see these noted in (parenthesis)
 - Example: **PSYC-101: Intro to Psychology** must be successfully completed before taking any upper level Psychology courses

You will be assigned a First-Year Advisor

- Advisors are both faculty members and academic advisors
- Advisors are assigned by major and are proactive in outreach to students
- Student begin immediately with a professional contact in their area of interest
- Advisors guide students in course planning, goal setting, and making responsible choices for their academic careers

Drop/Add

- Advisors assist students with dropping courses and adding them, especially in the first semester when an advisors signature is required to make changes
- Students can speak with their advisor about schedule changes

Registration


- We register students for their first semester, and every semester following they will register themselves
- Their advisor will assist them in choosing classes, and ASC staff will teach them how to register and review academic information during a visit to their First Year Seminar course



- DegreeWorks

- Easy-to-use online set of academic planning tools that assists students and advisors in tracking and planning academic progress and ultimate completion of degree requirements
- Provides students meaningful and consistent direction and provides advisors and student record managers with up-to-date curriculum and course completion information. It also helps to identify outstanding requirements needed for graduation.
- Accessed in BannerWeb

- Starfish

- Starfish assists with the adjustment to college- it is a way for your faculty to let you know if they have concerns about your progress in your courses, or give you kudos when you are succeeding
 - Advisors utilize the Starfish early alert/kudos system
 - Students can make appointments for tutoring and advising through Starfish
- 

Writing

- Professional Writing Tutors are available for 1:1 appointments and also offer asynchronous reviews
- In-class and out-of-class workshops are also frequently offered for students
 - Workshop topics include: Avoiding Plagiarism, Paraphrasing and Research Strategies, and Active Reading for Writing Purposes

Math

- Professional and Peer Tutors available for 1:1 appointments
- Study Groups and Professional Drop-in Tutoring available for all math courses

Content Areas

- Peer and Professional Tutoring available for the majority of subjects

Academic Success Strategies

- Professional Tutoring available for 1:1 appointments for Learning Strategies
 - Workshop topics include: Time Management, Note-Taking Skills, Study-Skills, Organizational Skills, and Learning Styles
- Tutoring is available throughout your entire academic career at Jefferson. For more information, please visit:
<http://www.eastfalls.jefferson.edu/successcenter/index.html>
- Tutoring begins on week 2 of the semester



Thanksgiving Break:

- Thanksgiving break begins on Wednesday, November 24 and classes resume on Monday, November 29

Winter Break:

- Classes end Monday, Dec 6, but Final Exams don't end until Thursday, December 16
 - We recommend you do not make travel arrangements until your student has their final exam schedule
- Residence Halls reopen on Sunday, January 9 and classes resume on Wednesday January 12

Grades:

- Grades are only officially given 2x a year
 - Midterm: October 18
 - Final: December 20
- Family members do not have access to grades, only if given permission through an academic FERPA release
 - separate from billing/financial aid FERPA

Accessibility Services:

- Students need to self-disclose for accommodations
- Each of their professors need to be notified at the start of every term

Schedule Availability:

- Your Fall 2021 schedule is available on BannerWeb
- *Your schedule is subject to change throughout the summer, so keep checking!*

University Calendar:

- Classes begin: Monday, August 23
- **Last day to ADD: August 30**
- DROP: September 1
 - Without a withdraw on transcript
- <http://www.eastfalls.jefferson.edu/registrar/calendar/index.html>

University e-mail:

- Keep checking your Jefferson University e-mail. All communication from Jefferson, including schedule updates, will come through your university email account

Have questions?

- Contact us!

- TUTORING

- Haggard Hall, 1st floor
- Monday - Thursday, 9 a.m. - 8 p.m.
- Fridays, 9 a.m. - 5 p.m.
- Weekend Hours available for Professional Writing Tutoring
- Tutoring begins Week 2 of the semester
- 215-951-2799
- TJU_EF_Tutoring@Jefferson.edu

- FIRST YEAR ADVISING

- Haggard Hall, 2nd floor
- Monday - Friday, 9 a.m. - 5 p.m.
- 215-951-2730
- TJU_EF_Advising@Jefferson.edu

- EASTFALLS.JEFFERSON.EDU/
LEARNING



Megan Mills

DIRECTOR, ACADEMIC SUCCESS
CENTER AND
ASSISTANT PROVOST
FOR STUDENT SUCCESS &
UNDERGRADUATE RETENTION
Megan.Mills@Jefferson.edu



Gina May

ASSISTANT DIRECTOR,
FIRST YEAR AND TRANSFER
ADVISING
Gina.May@Jefferson.edu



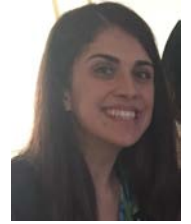
Ellen Knapp

ASSISTANT DIRECTOR,
MATH SERVICES
Carol.Quinn@Jefferson.edu



Melissa Gohn

ASSISTANT DIRECTOR,
LEARNING SERVICES
Melissa.Gohn@Jefferson.edu



Carol Quinn

OFFICE COORDINATOR
Carol.Quinn@Jefferson.edu



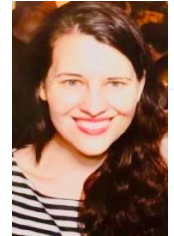
Deborah Kaminski

TRANSFER ADVISOR
Deborah.Kaminski@Jefferson.edu



Lauren-Elise Kadel

ASSISTANT DIRECTOR,
WRITING SERVICES
Lauren-Elise.Kadel@Jefferson.edu





Jefferson

Thomas Jefferson University