

# College of Health Professions Newsletter

ISSUE # 1 | SPRING 2021 | Jefferson.edu/JCHP

## Message from the Dean's Office

Unlike any other year, 2020 was a challenging time for all of us. We mourned the loss of loved ones, we protested for equality, and we participated in one of the most historic presidential elections. Despite these formidable challenges, we remained committed to our mission to educate and serve others.

We also know it was no small feat to deliver education through a hybrid format, and make continual adjustments to course schedules. We want to thank faculty, staff, students and our educational partners for your support, flexibility and hard work throughout the year. As we reflect on these challenges, we also want to acknowledge and celebrate our college accomplishments. This inaugural JCHP newsletter will highlight our achievements in the past year, and will be updated biannually. We wish you a productive and hopefully, less disruptive semester.

Sincerely,

- Michael Dryer, Debbie Zelnick,  
Nannette Fromm, Adam Bailis, Tep Ros  
and Linda Milburn

## In this Issue:

- Response to Trauma
- 2020 Highlights
- New Programs
- Student and Faculty Spotlights
- Institute of Emerging Health Professions

## JCHP in a Snapshot



After many changes over the past few years, Jefferson's College of Health Professions is currently one of the University's largest colleges. As we continue to grow, our goal is to prepare students as caring, competent and forward-thinking health care leaders.

## JCHP Holiday Celebrations:

### Drum It Out!

JCHP hosted a drumming workshop facilitated by percussionist Josh Robinson. Through this activity, JCHP faculty and staff learned how to use drumming as a coping tool, a vehicle for healthy expression, emotional release and a fun way to connect with others in an authentic and engaging way.

[Josh Robinson](#) is an Artist in Residence for Thomas Jefferson University.



JCHP faculty and staff at the virtual Drum it out workshop on December 9, 2020

### JCHP Holiday Giving Drive

Faculty and staff raised \$365 for the Law & Society Honor Society benefitting the Hub of Hope, and \$1,070 for the Ramilly Market benefitting both campuses.

# Responding to Pandemic and Racial Trauma: Our Counseling and Behavioral Health Experts Weigh In

It is safe to say 2020 has been an unusual year and to some degree resulted in post-traumatic stress for many of us. The pandemic, politics and social justice issues, have taken a toll on our physical and mental health.

As our lives changed from routine to chaos, how do we remain resilient?

Fortunately, the experts from our Counseling & Behavioral Health Department have provided guidance, comfort and support to all of us.



Angelle E. Richardson, Ph.D., LPC, Assistant Professor for Community and Trauma Counseling was quoted in the [New York Times article](#), “A Tough Call for Families: How to Spend Thanksgiving”.



Kirby L. Wycoff, PsyD, EdM, MPH, NCSP, Program Director, Community and Trauma Counseling was featured in the [Nexus article](#), “How Parents Can Help Children Get ‘Back to School’”.



Erica J. Wilkins, Ph.D., LMFT, Program Director for Couple and Family Therapy talks about “[What Should Being Black in Philly Look Like? It Should Be Empowered and Equipped to Heal](#)”.

## 2020 JCHP Highlights

- During the pandemic, faculty member Sean Chadwick and biotechnology students Austin Pendergast and Ellen Robinson produced 27,000 viral transport media tubes needed for COVID-19 testing.
- As the leading experts in Telehealth the Institute of Emerging Health Professions (IEHP) collaborated with leaders of managing JeffConnect to launch the [National Center for Telehealth Education and Research \(NCTER\)](#).
- [The Midwifery Institute at Thomas Jefferson University](#) jumped from 24th to 17th in U.S. News and World Report rankings for Best Midwifery Programs.
- 100% 2020 pass rate on the American Midwifery Certification Board exam.

## New Year, New Programs

### Summer 2021:

- [Dual MS Degree in DMM & MPH](#)

### Fall 2021:

- [MS in Nutritional Sciences](#)
- [MS in Cardiovascular Perfusion](#)
- [MS in Medical Cannabis Science and Business](#)
- [Graduate Certificate in Cannabis Business](#)
- [Advanced Practice Certificate in Integrative Health Education](#)
- [MS in Integrative Health Sciences](#)
- [UG course: HSCI 371 Special Topics in Health - Cannabis](#)

### To learn more visit:

<https://www.jefferson.edu/JCHP>

# Student Spotlight



Name: Krupa Patel  
Program: M.S. in Physician Assistant Studies

**Why did you choose Jefferson:** I grew up hearing the name "Jefferson." Not only was I born in a Jefferson hospital, I volunteered at Jefferson during high school and worked in a clinic at the hospital prior to Physician Assistant (PA) school. It was fate for me to end up at Jefferson for my career training. After interviewing at the TJU Center City Campus, it was an easy choice. The environment on campus is great and the school has a lot to offer whether it is student engagement or academic resources. The collaboration within the program is evident, but the collaboration goes beyond that too.

READ MORE ON FACEBOOK:  
<https://www.facebook.com/JeffersonUniv/>

## Student Accomplishments

- Jacqui Johnson, a graduate of our post-master's certificate in Art Therapy program, and also a current student in our post-master's Play Therapy Certificate program was the recipient of the 2020 New Professional Scholarship Award, given by the American Art Therapy Association. She was recently featured in a magazine story on mental health. <https://re-spin.com/mental-health-is-more-important-than-ever/>
- Kelly Abramowitz and Corrie Billig, CTC students in Art Therapy Concentration, serve as student liaisons and representatives to the board of the state chapter of the American Art Therapy Association.
- The Physician Assistant students at East Falls raised \$400 and purchased clothing and hygiene supplies for the Tent City in Philadelphia. They are also currently doing a food drive through Philabundance.

## Level Up with the Institute of Emerging Health Professions

The Institute of Emerging Health Professions (IEHP) was launched in 2017 to develop new academic programs for the University. In 2019, IEHP became the first Institute within the College of Health Professions. IEHP offers a variety of innovative academic certificates and continuing education courses such as perfusion, telehealth, cannabis Medicine and the Pennsylvania Department of Health-approved cannabis provider course, and more. We now welcome the Lambert Center for the Study of Medicinal Cannabis & Hemp, whose mission is to serve as the nationwide comprehensive resource for education, research and clinical practice in the therapeutic use of cannabinoids and industrial hemp.

### 2020 Highlights:

- Perfusion Class of 2020 achieved a 100% pass rate on their certification exam.
- Launched the National Telehealth Center for Education and Research (NCTER).
- Developed a graduate certificate in Connected Care: Telehealth & Digital Health Innovation.
- Dr. Laura Pontiggia started in July 2020 as the new academic program director.

# New Faculty Spotlight



**Kati Fosselius, MS, RDN, LDN**  
Director, MS in Nutrition and Dietetic Practice (MS/RDN) Program

I'm the director of a program designed to prepare graduates to become Registered Dietitian Nutritionists. The program is scheduled to welcome its first cohort in the fall of 2021, so currently my role involves designing the curriculum, completing the steps needed to get our program accredited, hiring a terrific team and building partnerships with nutrition professionals who will host our students in the field for the experiential learning component of our program. I couldn't be more excited to build a new dietetics education program from the ground up. The

opportunity to create an educational experience rooted in my professional values, which include social justice advocacy, equity, and a health at every size approach, is an incredible honor and gift. By extension, it's a true privilege to build and foster a culture among our students, faculty and staff of inclusion, courageous communication and compassionate professional practice. I look forward to teaching students starting in the fall!

## Faculty & Staff Accomplishments

Congratulations to all faculty members for your outstanding publications and research awards. See a full list at [www.jefferson.edu/JCHP](http://www.jefferson.edu/JCHP).

### Counseling & Behavioral Health department:

- Priscilla Singleton, LMFT, LCSW received 2020 Thomas Jefferson University Award for Outstanding Adjunct Teaching.

### Institute of Emerging Health Professions:

- Shruti Chandra MD, MEHP and Tep Ros, MPA received the Outstanding Education in Telehealth Award.

### Midwifery and Women's Health department:

- Barbara Reale, assistant professor, completed her Doctor of Nursing Practice at the University of Pennsylvania and presented her project at the second annual Midwifery Thinks Symposium.
- In October 2020, Dana Perlman completed her term as chair of the Directors of Midwifery Education programs, the national organization of midwifery programs.

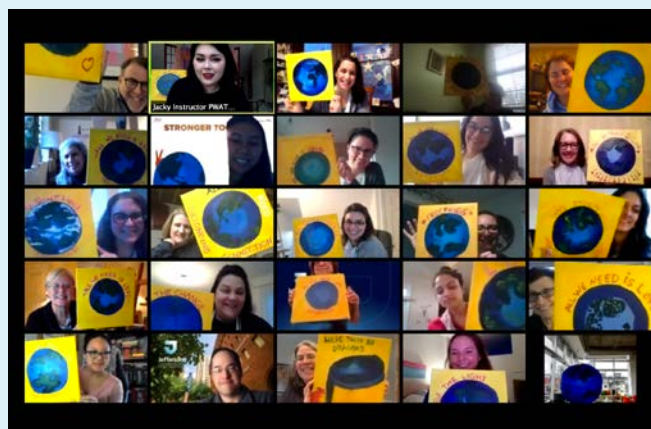
### Physician Assistant department:

- Jeffrey T. Owens, DMSc, PA-C successfully completed his DMSc degree in August, 2020.
- Michele Zawora, MD, FAAFP, was selected as one of the 2020/2021 AAFP Vaccine Science Fellows and has been fortunate to be involved in key vaccine education and planning meetings at a national level during a very interesting time in public health

## Don't miss out!

Check out our upcoming events:

- Faculty Pursuing Scholarship Course - 3/3-3/24
- Undergraduate Open House -3/20/2021
- 4<sup>th</sup> Annual Philadelphia Trauma Training Conference: Supporting Adaption, Transformation, and Health in the Wake of Trauma- Date TBD
- JCHP Graduation - 05/13/2021



*JCHP faculty and staff at the virtual Painting with a Twist event on 1/22/2021*

## Get Involved

Are you interested in contributing to a future newsletter or seeking opportunities to collaborate? Contact Tep Ros at [Tep.Ros@jefferson.edu](mailto:Tep.Ros@jefferson.edu)