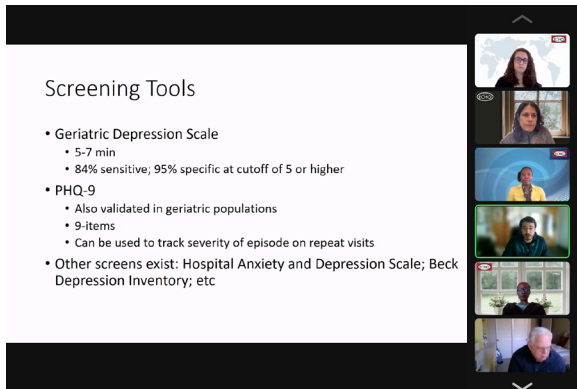


Project Extension for Community Healthcare Outcomes (ECHO)

The Extension for Community Healthcare Outcomes (ECHO) model, developed at the University of New Mexico, employs Zoom to build healthcare workforce capacity and improve access to specialty care by providing frontline clinicians with the knowledge and support they need to manage underserved patients in their own communities. ECHO topics focus on complex conditions requiring a team-based approach to care. We serve as an ECHO hub which hosts ECHOs, or series of 60-minute sessions, on a regular basis on different topical areas of healthcare need. An interprofessional expert panel guides interactive, case-based learning, including both a didactic and a case presentation with a collaborative approach. This year, ECHO series were offered in the areas of Integrated Behavioral Health (IBH), Inpatient Care for Opioid Use Disorders (ICOUD), and Intellectual and Developmental Disabilities (IDD).

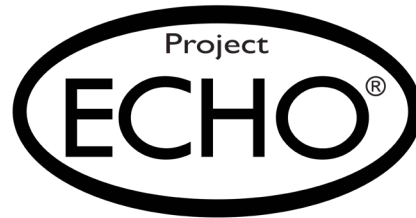


Key Curricular Elements

- "All teach, all learn" model
- Case-based discussion
- Roles and responsibilities of different team members in supporting patients with complex conditions or needs
- Democratization of specialty knowledge

New This Year

Employed group polls to gauge prior experience with and application in practice of session topics for enhanced learner engagement.



"So valuable to hear real life cases with expertise from different professionals."
—Student Public Health Practitioner

"It gave me more awareness and appreciation for all the services that can be offered, which I will keep in mind for my patients."
—Physician

Program Outcomes | Assessment & Evaluation

METRIC	N	POST SELF-EFFICACY*		I WOULD RECOMMEND ECHO TO A COLLEAGUE
		MEAN	SD	
Integrated Behavioral Health	89	4.34	0.70	99%
Inpatient Care for Opioid Use Disorders	22	4.21	0.66	100%
Intellectual and Developmental Disabilities	26	4.27	0.69	96%

*Self-efficacy in teamwork and ability to provide appropriate care (Max. = 5)

IPEC Competencies



INTEGRATED BEHAVIORAL HEALTH (IBH)
165 LEARNERS <i>Professions</i>
Counseling & Behavioral Health Specialist Nurse Nurse, Advanced Practice Occupational Therapist Pharmacist Physical Therapist Physician Physician Assistant Public Health Practitioner Social Worker Other
INPATIENT CARE FOR OPIOID USE DISORDERS (ICOUD)
60 LEARNERS <i>Professions</i>
Nurse Nurse, Advanced Practice Pharmacist Physician Physician Assistant Public Health Practitioner Social Worker Other
INTELLECTUAL AND DEVELOPMENTAL DISABILITIES (IDD)
142 LEARNERS <i>Professions</i>
Counseling & Behavioral Health Specialist Dietitian Nutritionist Nurse Nurse, Advanced Practice Occupational Therapist Pharmacist Physical Therapist Physician Physician Assistant Social Worker Other
4 FACILITATORS
<i>Professions</i>
Counseling & Behavioral Health Specialist Education Coordinator Physician

330 unique student, faculty, and staff learners across ECHOs (53 participated in more than one series)