

GSA Officers
&
MS Student Liaisons
2019-2020

Welcome & MS First Year Tips.....	Page 2
GSA Officers.....	Page 3-5
Cell Biology.....	Page 6
Microbiology and Immunology.....	Page 6
Clinical Research.....	Page 7
Forensics, Genetic Counseling, Pharmacology.....	Page 7

GSA Officers & MS Student Liaisons AY 2019-2020

Welcome & Tips for First Year MS Students

Dear First Year MS Student,

Congratulations on officially starting your MS. TJU's GSA would like to welcome you into your first year of your MS. As GSA's VP of Internal Affairs AY19-20, I am responsible for coordinating your liaisons and events for you to meet with them outside of your one on one meetings. If you have any questions or concerns please email me at snj007@jefferson.edu.

Some tips for your first year:

- Reach out to your designated liaisons for help in navigating academics, student life as a MS, and opportunities for fun on & off campus.
- If you can, take 3 classes per semester to finish MS in time.
- Start studying immediately after receiving material. The upper levels of the library are quiet study and perfect to do this. Also, there are training services at the library.
- Find a thesis lab (if doing a lab thesis) ASAP. If you join a lab, lab fit is important besides liking the work that the PI's lab focuses on and your thesis work. Make sure to really enjoy the people in your lab as you will be spending a majority of time with them. Make sure that your work schedule fits with that of the lab or that the lab is willing to accommodate your hours.
- Have honest conversations with your PI about things both lab and outside of lab related, it helps to have open communication between the both of you. Remember your PI is not a mind reader.
- MS is not stress free. Develop stress relieving strategies that work for you. Make sure to make time for yourself. You will grow a lot in the years to come.
- Ask questions, lots and lots of questions. Navigating through your MS should not be ambiguous. Need answers? Just ask.
- Need more advice? Feel free to email your liaisons, or any senior student questions.
- And, remember to have fun! On that note, GSA hosts a bunch of events during the year for you.

See you soon!



Graduate Student Association

*Be sure to join the TJU
GSA Facebook Group
and here is our webpage
for more information! →*



GSA Officers & MS Student Liaisons AY 2019-2020

GSA Officers



Tess Cherlin

President, (PhD)

tess.cherlin@jefferson.edu

[LinkedIn](https://www.linkedin.com/in/tess-cherlin-76ab38180/): <https://www.linkedin.com/in/tess-cherlin-76ab38180/>

Tess graduated from Syracuse University with a BS in Biochemistry in 2011. She taught high school Biology in New Orleans, Louisiana and then worked as a Research Technician at Xavier University of Louisiana until 2015. Tess is currently a 5th Year PhD Candidate in the Genetics, Genomics, and Cancer Biology Program and studies cancer biology and computational medicine in Dr. Isidore Rigoutsos' Lab.



Lindsey Mayes

Secretary, (PhD)

lindsey.mayes@jefferson.edu

[LinkedIn](https://www.linkedin.com/in/lindsey-mayes-044880130/): <https://www.linkedin.com/in/lindsey-mayes-044880130/>

Lindsey grew up in Downingtown, Pa and earned her BS in Biotechnology from Penn State. After college she completed an MS at Jefferson in Biotechnology. Lindsey decided to continue her education at Jefferson and is currently a 5th Year PhD Candidate in the Biochemistry and Molecular Pharmacology program where she studies inflammation and cell death in the Alnemri lab.



Eric V. Brown

Treasurer, (PhD)

eric.v.brown@Jefferson.edu

Eric grew up in South Jersey and studied Biology and Chemistry as an undergrad at York College of Pennsylvania before going on to receive an MS in Biomedical Sciences from Rowan University. Eric is currently a 5th Year PhD Candidate in the Neuroscience program working in the laboratory of Angelo Lepore studying spinal cord injury.

GSA Officers (cont.)



Brandie Morris

VP of Academic Affairs, (PhD)

brandie.morris@jefferson.edu

Brandie is originally from Connecticut and graduated from Johns Hopkins University in 2015 with a BS in Neuroscience. She is currently a 5th Year PhD Candidate in the Neuroscience program and performs her research in the Jefferson Weinberg ALS Center under Dr. Piera Pasinelli.



John Han

VP of Career Development, (PhD)

john.han@jefferson.edu

[LinkedIn](https://www.linkedin.com/in/john-han-57311261/): <https://www.linkedin.com/in/john-han-57311261/>

John grew up in Ambler, Pa outside of Philadelphia. He earned his B.S. in Biology at Shippensburg University with a minor in Biochemistry. He is a 3rd Year PhD student in the Cell Biology and Regenerative Medicine (CBRM) program. John works in the laboratory of Dr. Nancy Philp studying the metabolic coupling in the retina.



Nicki Heinsinger

VP Community and Cultural Affairs, (PhD)

nicolette.heinsinger@jefferson.edu

[LinkedIn](https://www.linkedin.com/in/nicolette-heinsinger-1646a6b5/): <https://www.linkedin.com/in/nicolette-heinsinger-1646a6b5/>

Nicolette grew up in Philadelphia suburbs in West Chester, Pa. She graduated from Georgetown University in 2016 with a BS in Biology and a minor in Psychology. She is currently a 4th Year PhD Candidate in the Neuroscience department studying spinal cord injury under the mentorship of Dr. Angelo Lepore.

GSA Officers (cont.)



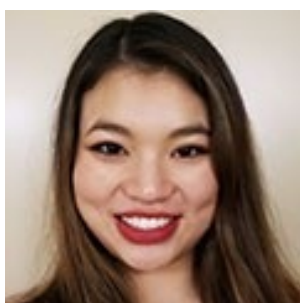
Alison Moss

VP of Social Events, (PhD)

alison.moss@jefferson.edu

[LinkedIn](https://www.linkedin.com/in/alison-moss-46b95884/): <https://www.linkedin.com/in/alison-moss-46b95884/>

Alison graduated from the University of Texas in Austin with a BS in Biomedical Engineering in 2015. She is currently a 5th Year PhD Candidate in the Biochemistry and Molecular Pharmacology PhD program and works in Dr. Vadigepalli's lab studying computational and systems biology in the heart and brain.



Shira Johnston

VP of Internal Affairs, (PhD)

shira.johnson@jefferson.edu

[LinkedIn](https://www.linkedin.com/in/shirajohnston/): <https://www.linkedin.com/in/shirajohnston/>

Shira grew up right outside of Northeast Philadelphia. She earned her BS in Chemical Engineering and a minor in Psychology as a Social Science from the University of Rochester in 2017. She is currently a 3rd Year PhD student in the Cell Biology and Regenerative Medicine (CBRM) program. She works in the lab of Dr. Makarand Risbud studying the Role of Hypoxia Inducible Factors (HIFs) in Nucleus Pulposus Cell Adaptation.



Ashley Liautaud

VP of Career Development, (MS)

ashley.liautaud@jefferson.edu

[LinkedIn](https://www.linkedin.com/in/ashley-liautaud/): <https://www.linkedin.com/in/ashley-liautaud/>

Ashley grew up in Butler, NJ. She moved to Philadelphia where she earned her BS in Health Science at Philadelphia University. She is currently a Master's student in the Pharmacology program and works at the Jefferson Headache Center as a research coordinator.

GSA Officers & MS Student Liaisons AY 2019-2020

Cell Biology



Sonya Selvaraj

sxs736@jefferson.edu



Christopher (Chris) Mansi

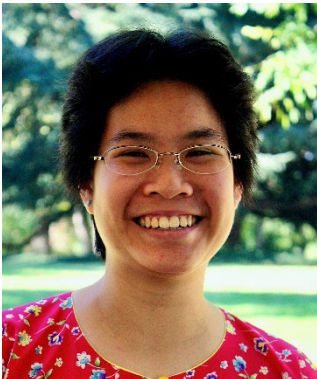
cxm176@jefferson.edu

Microbiology and Immunology



Rachael (Rae) Lambert

rel017@jefferson.edu



Catherine Khoo

cjk009@jefferson.edu

Clinical Research



Kanayo Okwuasaba

kdo002@jefferson.edu

Forensics

TBD

Genetic Counseling

TBD

Pharmacology

TBD