

HEOR and Medical Access



Health Economics & Outcomes Research and Medical Access Fellowships

2021



NOVARTIS | Reimagining Medicine

Novartis is a world leader in the research and development of products to protect and improve health and well-being.

Novartis was created in 1996 from the merger of the Swiss companies Ciba-Geigy and Sandoz. Novartis Pharmaceuticals is dedicated to discovering, developing, manufacturing, and marketing prescription drugs to prevent and cure diseases, to ease suffering and to enhance quality of life. Novartis' portfolio of products is directed toward cardiovascular, multiple sclerosis, immunology, hepatology, and dermatology, organ transplantation, ophthalmology, oncology and hematology, and other therapeutic areas.

Novartis, derived from the Latin *novae artes*, meaning "new skills," is committed to using new skills to improve health and well-being through innovative products and services. Recognizing an increasing need for outcomes information, resources and expertise, the Health Economics & Outcomes Research (HEOR) departments at Novartis strive to be best-in-class in the generation of outcomes evidence that demonstrates value and optimizes patient access to Novartis products. This is accomplished through execution of burden

and cost-of-illness studies, economic evaluations alongside clinical trials, comparative effectiveness research, cost-effectiveness analyses, prospective observational studies such as effectiveness registries, retrospective claims database analyses and patient-reported outcomes research.



Purpose

The Health Economics & Outcomes Research (HEOR) and Medical Access Fellowship Program provides training and hands-on experience in a broad range of health economics, outcomes research and comparative effectiveness research (CER) opportunities. This 2-year program is structured to allow the Fellows to gain proficiency in the field of health economics, outcomes research and CER as conducted in academic, managed care, hospital, health policy and/or pharmaceutical industry settings.



Overview

Novartis Pharmaceuticals Corporation is pleased to offer three 2-year Health Economics & Outcomes Research (HEOR) and Medical Access Fellowship positions.

The objective of the first year is to educate the fellow on general principles and methods applied in health economics and outcomes research. Concurrently, the fellow will participate in ongoing outcomes research projects at the first year fellowship site. All Fellows will spend the second year of the Fellowship at the US-based headquarters of Novartis Pharmaceuticals Corporation located in East Hanover, New Jersey.

While at Novartis, "field-based" training will be undertaken as part of the Fellowship training. Fellows will participate in health economics and outcomes research projects and gain experience in how a pharmaceutical manufacturer uses clinical, economic, and humanistic data to support the development and commercialization of its products, with opportunities in neuroscience, respiratory, ophthalmology, immunology, dermatology, cardiovascular, and transplant franchises.

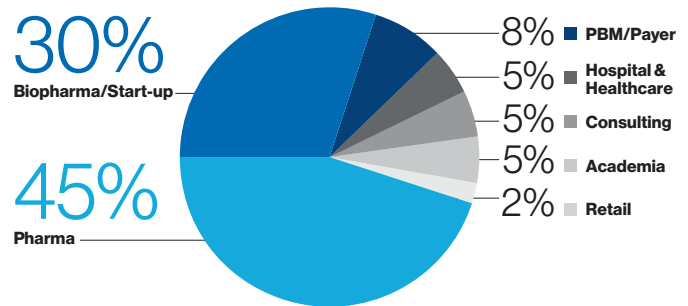
In addition, a unique 3-6 month rotational opportunity will also be available in Medical Access, where the fellow will gain experience in "value translation" to national and regional payer accounts. The fellow will help identify strategic trends in the external payer and health plan environment that may impact access to and reimbursement for Novartis' products.

The fellowship positions differ by first-year site requirements and type of experience offered. Each position is described in this brochure. Compensation includes a competitive stipend, basic medical insurance, holiday and vacation time, plus other benefits associated with each specific academic/managed care institution.

First-Year Fellowship Sites for 2-Year Programs:

- Baylor Scott & White Health, Temple, TX/
The University of Texas at Austin, Austin, TX
- Department of Pharmaceutical Health Services Research, University of Maryland, Baltimore, MD
- Jefferson College of Population Health, Thomas Jefferson University, Philadelphia, PA

Fellowship Alumni: Where Are They Now?



Contact

Please contact current Fellows for any site-specific questions (contact information provided on subsequent pages).

For inquiries regarding general application or interview process, please contact:

Esther Jihee Yi, PharmD
Associate Director
HEOR and Medical Access
East Hanover, NJ
esther.yi@novartis.com



Novartis Pharmaceuticals Corporation/ Baylor Scott & White Health/ The University of Texas at Austin



Fellowship Sites & Preceptors

Baylor Scott & White Health

Paul Godley, PharmD, FASHP, BCPS, Director of Pharmacy, Ambulatory & Speciality Clinical Pharmacy Services, Temple, TX

The University of Texas at Austin College of Pharmacy

Karen Rascati, RPh, PhD, FAPhA, Graduate Advisor, Eckerd/Turley Centennial Endowed Professor, Austin, TX

Novartis Pharmaceuticals Corporation

Esther Jihee Yi, PharmD, Associate Director, HEOR and Medical Access, East Hanover, NJ

Baylor Scott & White Health/The University of Texas

Baylor Scott & White is an integrated healthcare system in central Texas. The Scott & White Health Plan is a health maintenance organization that has over 400,000 members and is affiliated with the Baylor Scott & White Quality Alliance, the system's accountable care organization, which represents over 6,000 physicians. Baylor Scott & White is affiliated with the College of Medicine, Texas A&M University Health Science Center, and the College of Pharmacy, The University of Texas at Austin.

The Department of Pharmacy at Baylor Scott & White provides progressive and innovative pharmaceutical services in a variety of environments for all components of the institution. Included are clinical and distributive services for the hospital, clinic and health plan, as well as sponsorship of pharmaceutical care programs and ambulatory care clinics focusing on lipid, diabetes and anticoagulation management. Fellows will gain significant understanding of the key issues involved in pharmacy services provided by prescription benefits management and managed care organizations. The integrated character of the institution and the Department of Pharmacy provides significant opportunities for pharmacy practice, research and education.

The Health Outcomes and Pharmacy Practice Division, College of Pharmacy, The University of Texas at Austin, is one of the preeminent educational institutions for pharmacy education in the nation. The college is located in downtown Austin, and the Fellow is offered the option of pursuing the Master of Science degree in Pharmaceutical Sciences at the University of Texas, Austin. The degree would be granted at the end of the Fellowship provided that the required coursework and thesis have been completed. The recommended course of study is designed to assist the Fellow in coordinating required and recommended coursework along with the Fellowship requirements. However, the coursework is tailored based on individual interests, background and career goals. Additionally, the College has a Center for Pharmacoeconomics Studies that currently has eight researchers on staff and conducts a variety of outcomes research studies each year.

The unique nature of the Baylor Scott & White integrated healthcare system, combined with the pharmacoeconomic expertise at the College of Pharmacy, offers significant opportunity for individuals interested in the Novartis Fellowship experience.

Eligibility

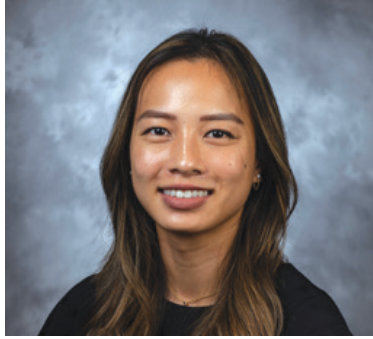
Eligible candidates must have a doctorate in pharmacy or the combination of an undergraduate degree in pharmacy plus an advanced degree in health services research, public health, health policy, pharmacy, economics, medicine or other related area. Experience in, or at a minimum, exposure to some aspect of outcomes research, health economics or another related field of research is preferred.

Information

For questions or additional information, please contact:

Cindy Nguyen, PharmD
Health Economics & Outcomes Research Fellow
Email: Cindy.Nguyen@BSWHealth.org

All questions regarding potential visa sponsorship should be directed to the collaborating institution.



First-Year Fellow: Cindy Nguyen, PharmD

Cindy Nguyen is the first-year Health Economics & Outcomes Research (HEOR) Fellow with Novartis Pharmaceuticals Corporation, Baylor Scott & White Health (BSWH), and the University of Texas at Austin.

Cindy received her Doctorate of Pharmacy from the University of California, San Francisco (UCSF). She enters the Fellowship with complementary experiences in research, industry, health policy, managed care, pharmacy benefit management, specialty, and community pharmacy.

Prior to the Fellowship, Cindy synthesized clinical evidence and health economic information to provide efficient access to data between manufacturers and healthcare decision-makers used for formulary evaluations at Xcenda® (previously Dymaxium, Inc). She also worked at the Food and Drug Administration (FDA) in the Office of Executive Programs, where she supported cross-functional committees regarding issues involving the opioid epidemic, exclusivity rights, and cannabis regulation. She also provided services to the Medical Affairs department at Avanir Pharmaceuticals, where she supported medical strategies pertaining to pipeline and marketed

products. Her data analysis and quality improvement experience include drug utilization reviews for the Specialty Pharmacy at the University of California, Irvine Medical Center and a best practice alert audit that analyzed provider response to an antibiotic reassessment at Orange Coast Memorial Medical Center. Other relevant experience includes her role as a co-investigator at the UCSF Medication Outcomes Center, volunteer for the UCSF Medicare Part D Outreach, president for UCSF AMCP chapter, and a member of AMCP's National Student Pharmacist Committee.

During her first year, Cindy conducts outcomes research for pharmaceutical companies and supports the Antibiotics Stewardship Committee and Specialty Task Force at BSWH. Her current projects include financial analysis of specialty medications and antibiotic prescribing trends to drive operational decisions at BSWH. In addition, Cindy is working towards earning a Master's degree in Pharmaceutical Science from the Division of Health Outcomes and Pharmacy Practice at the University of Texas at Austin.



Novartis Pharmaceuticals Corporation/ University of Maryland School of Pharmacy



Fellowship Sites & Preceptors

University of Maryland School of Pharmacy

Linda Simoni-Wastila, BSPharm, MSPH, PhD, Professor, Department of Pharmaceutical Health Services Research, Baltimore, MD

Novartis Pharmaceuticals Corporation

Esther Jihee Yi, PharmD, Associate Director, HEOR and Medical Access, East Hanover, NJ

The University of Maryland School of Pharmacy

The University of Maryland School of Pharmacy, founded in 1841, is the fourth oldest school of pharmacy in the nation. The School of Pharmacy is one of seven professional schools and a graduate school located at the University of Maryland Baltimore, a thriving center for health services practice and research. Through its education, research and service programs, the School of Pharmacy strives to improve the health and well-being of society by aiding in the discovery, development and optimal use of medicines. One of three departments within the School, the Department of Pharmaceutical Health Services Research (PHSR) aims to improve the health of diverse populations through pharmaceutical health services research, education, service and community outreach.

PHSR scholarship spans the disciplines of behavioral sciences, pharmacoeconomics, pharmacoepidemiology and policy. Fifteen faculty members conduct research sponsored by federal and state governmental agencies, foundations and the pharmaceutical industry. Work clusters around issues inherent in the Department's Centers: The Peter Lamy Center on Drug Therapy and Aging, and the Center on Drugs and Public Policy. Pharmaceutical Research Computing, a third Departmental center, provides computer programming, data management and analytic support to faculty, students and staff.

The Department houses numerous comprehensive databases, including the Chronic Condition Warehouse (CCW) 5% sample of Medicare beneficiaries linked to Part D data; the Medicare Current Beneficiary Survey; Medicaid and MAX data; IQVIA dataset and other proprietary and public data sets.

This two-year Fellowship focuses on the development of research skills relevant to health policy, with a particular focus on pharmaceutical policy. Fellows will spend the first year at the University of Maryland Baltimore honing research and policy skills and the second year at Novartis, where they will apply training and interests in an industry environment. Broad domains of interest include research focusing on medication management and outcomes in geriatric patients suffering multiple chronic illnesses, Medicare policy, long-term-care policy, mental health policy, COVID-19, patient-centered outcomes research and comparative effectiveness research. The successful applicant will work closely with a mentoring team to identify relevant research areas and training opportunities. The unique combination of rigorous academic training with industry experience in the second year will provide the Fellow considerable experience to conduct policy-relevant health services and outcomes research.

Eligibility

Eligible candidates should have an advanced degree in health services research, public health, economics, epidemiology, pharmacy, pharmacy administration or a related discipline. A background in pharmacy or medicine and experience in outcomes research, health economics or another related field of research is preferred. Candidates must have excellent written and verbal communication skills.

Information

For questions or additional information, please contact:

Eric Hsiao, PharmD
Health Economics & Outcomes Research Fellow
Email: eric.hsiao_ext@novartis.com

All questions regarding potential visa sponsorship should be directed to the collaborating institution.



Second-Year Fellow: Eric Hsiao, PharmD

Eric Hsiao is the second-year Health Economics & Outcomes Research (HEOR) Fellow with the University of Maryland School of Pharmacy and Novartis Pharmaceuticals Corporation.

Eric graduated with his PharmD from the University of the Sciences in Philadelphia. Eric stimulated his interest in research through supporting studies on infective endocarditis and intravenous drug abuse and by completing a minor in biostatistics. His passion for pharmacoeconomics and health outcomes was ignited after he completed a PhD-level course in health policy.

In pharmacy school, Eric worked with a consulting team to provide support to the rare disease portfolios of several large pharmaceutical companies. He also rotated at Novartis where he completed projects on ophthalmology, neuroscience, and rheumatology.

During his first year at University of Maryland, Eric supported Dr. Linda Wastila and her team in public health policy and outcomes research in the geriatric population. He was involved in research in areas of antipsychotic medication management, opioid dependence, and cannabis use. His main involvement was with a \$1.5 million R01 grant project from the NIH to investigate the public health consequences and effects of a nationwide nursing home antipsychotic medication reduction initiative. Other research projects included effects of heterogeneous cannabis access, cannabis use in relation to opioid use, and opioid use in cancer patients.

As a second-year fellow, Eric currently supports the HEOR Ophthalmics team – contributing to the lifecycle of drug products for neovascular age-related macular degeneration and dry eye syndrome. He works with the HEOR team to provide strategic and cross-functional support of Novartis-branded products. His current activities are focused on evidence-generation and value-messaging to help Novartis capitalize on tailwinds and address headwinds for the ophthalmics brand portfolio.



First-Year Fellow: Alexandra Wallem, PharmD, MS

Alexandra Wallem is the first-year Health Economics Outcomes Research (HEOR) Fellow with the University of Maryland School of Pharmacy and Novartis Pharmaceuticals Corporation.

Alex graduated with her Doctor of Pharmacy and Master of Pharmaceutical Sciences Institute for Pharmaceutical Outcomes and Policy (IPOP) degrees from the University of Kentucky in Lexington. Alex served as the Vice President of Phi Lambda Sigma Pharmacy Leadership Society and Lambda Kappa Sigma, Professional Pharmacy Fraternity, during pharmacy school. Her passion for pharmacoeconomics and health outcomes is rooted in her interest in public health and policy. This interest was sparked during her second year of pharmacy school while she developed board-approved protocols for emergency contraception allowing pharmacists to improve access to care in rural areas. Alex's research concentration for her master's degree investigated medication use in older adults with dementia.

During her final year of pharmacy school, Alex completed rotations with a policy and research focus at Eli Lilly and Company and the National Health Services (NHS) Lothian in Edinburgh, Scotland. At Eli Lilly, she completed projects supporting migraine and cluster headache therapeutics. Additionally, at the NHS, Alex successfully completed research exploring variation in applying a clinical pharmacy risk stratification tool.

During her first year of Fellowship, Alex will focus on further developing her research methodology and analytic techniques through additional PhD level coursework and HEOR certificate completion. She hopes to improve upon her communication skills through student organization mentorship and teaching opportunities in the UMB pharmacy curriculum.

At the University of Maryland, Alex currently supports Dr. Linda Wastila and her team in research involving older adults and antipsychotic overuse in long-term care facilities. Additionally, she is conducting research investigating vaccination relevance during the COVID-19 pandemic and migraine medication utilization.

Novartis Pharmaceuticals Corporation/ Thomas Jefferson University, Jefferson College of Population Health



Fellowship Sites & Preceptors

Thomas Jefferson University

Vittorio Maio, PharmD, MS, MSPH, Research Professor, Director, Health Economics and Outcomes Research Fellowship, Jefferson College of Population Health, Thomas Jefferson University, Philadelphia, PA

Novartis Pharmaceuticals Corporation

Esther Jihee Yi, PharmD, Associate Director, HEOR and Medical Access, East Hanover, NJ

College of Population Health, Thomas Jefferson University

Established in 2008, the Jefferson College of Population Health (JCPH) is one of six colleges that comprise Thomas Jefferson University, founded in 1824 as Jefferson Medical College. JCPH builds upon the 18-year history of Jefferson's Department of Health Policy and specializes in all key areas of population health—public health, health policy, healthcare quality and safety, and applied health economics and outcomes research (AHEOR). The College has one of the oldest and most established outcomes research Fellowship programs in the country. To date, over 50 individuals have completed JCPH Fellowships and have successfully pursued careers in all sectors of the healthcare industry, including government, pharmacy, insurers and consulting.

During the first year, the Fellow will work in JCPH at the University's Philadelphia Center City campus and be assigned to manage specific outcomes research projects. As a member of the JCPH research team, s/he has the opportunity to attend and present at research meetings, journal clubs, Population Health Forums and sponsored educational programs. S/he may also contribute to any one of several graduate level classes taught by JCPH faculty in the College's public health, AHEOR, health policy, healthcare quality and safety, population health intelligence and population health graduate programs. The Fellow will develop writing skills through completion of a writing seminar, peer review of continuing education articles and authorship of manuscripts for publications edited by *American Journal of Medical Quality*, *Population Health Management*, and *Population Health Matters*.

Networking is also an important activity during the first year. The Fellow will interact with decision makers from both within the University and from a broad variety of organizations, including pharmaceutical and device manufacturers, health plans and other health-related employers. The Fellow will regularly meet with JCPH faculty and staff to discuss research projects and academic experiences, and s/he will be assigned a faculty mentor to coach him/her during the first year. Completion of master's level coursework through JCPH is a formal component of this Fellowship and serves to develop the knowledge and skills required for health economics and outcomes research. The Fellow has the option to complete a fully supported graduate Certificate or Master of Science degree program in public health, population health, population health intelligence, health policy or applied health economics and outcomes research.

The second year of training will take place at Novartis, located in East Hanover, New Jersey. During this time, under the guidance of a Novartis preceptor, the Fellow will work directly with the HEOR department at Novartis for a period of one year in order to further their educational objectives by gaining applied experience in health economics and outcomes research. In addition to project work, the Fellow will participate in meetings to share his or her work and further develop networking and presentation skills.

Eligibility

Eligible candidates should have an advanced degree in health services research, public health, economics, epidemiology, pharmacy, pharmacy administration or a related discipline. A background in pharmacy or medicine and experience in outcomes research, health economics or another related field of research is preferred. Candidates must have excellent written and verbal communication skills.

Information

For questions or additional information, please contact:

Laetitia N'Dri, PharmD
Health Economics & Outcomes Research Fellow
Email: laetitia.ndri_ext@novartis.com

All questions regarding potential visa sponsorship should be directed to the collaborating institution.



Second-Year Fellow: Laetitia N'Dri, PharmD

Laetitia N'Dri is a second-year Health Economics & Outcomes Research (HEOR) Fellow with the Jefferson College of Population Health (JCPH) and Novartis Pharmaceuticals Corporation. Laetitia received her Doctor of Pharmacy degree from the University of Maryland School of Pharmacy, Baltimore, in May 2019. Starting her first year of pharmacy school, Laetitia conducted HEOR-related projects and gained multidisciplinary research experience analyzing and leading patient-reported outcomes (PRO) and cost-effectiveness studies. Laetitia also acquired technical skills such as designing discrete choice and best-worst scaling experiments as well as coding using SAS 9.4 and NVivo 11. Since the start of her postgraduate and professional career, Laetitia had the opportunity to publish 5 peer-reviewed manuscripts.

During her first year of fellowship at Thomas Jefferson College of Population Health (JCPH), Laetitia received further training pertaining to PRO, claims data, and EHR analysis, as well as first-hand exposure to the structure of the healthcare delivery system in the US and Italy, the hospital formulary decision-making process, P&T committee meetings, and Pharmacoeconomics hospital meetings. At JCPH, Laetitia collaborated with diverse teams including research faculty, statisticians, oncologists, US medical institutions, and residents to design research protocols and execute data analyses. Laetitia led projects related to multiple sclerosis, polypharmacy, medication adherence, employers' perspectives, opioid use disorder, leukemia, international pricing index, and mobile health applications.

In her second year of the fellowship, Laetitia supports the US HEOR Cardiovascular business unit. She is currently involved in a product pre- and post-launch research dependent on strategic alignment with internal and external stakeholders. Her research consists of retrospective claims database analyses, qualitative research, economic modeling, and system-level research collaborations. Laetitia is currently completing an Executive Master of Science in Applied Health Economics & Outcomes Research at JCPH.



First-Year Fellow: Shivangi Patel, PharmD

Shivangi Patel is a first-year Health Economics & Outcomes Research (HEOR) Fellow with the Jefferson College of Population Health (JCPH) and Novartis Pharmaceuticals Corporation.

Shivangi Patel received her Doctor of Pharmacy Degree from the Philadelphia College of Pharmacy at the University of the Sciences. Her interest in Health Economics and Outcomes Research stemmed from her involvement in organizations such as AMCP and IPhO throughout pharmacy school. Furthermore, Shivangi had the opportunity to conduct academic research in disease states like pneumococcal infections and neuromuscular disorders. This allowed her to gain hands-on experience in formulating research design, performing cost-effective analyses, and evaluating statistical data and patient outcomes.

Shivangi gained additional exposure to HEOR during her rotation at Mallinckrodt Pharmaceuticals. There she worked on compiling real-world evidence and analyzing the population health and unmet needs for rare diseases, such as Hepatorenal Syndrome. This experience broadened her perspective of HEOR as she was able to bring her skill set from academia into the pharmaceutical industry.

At JCPH, she will be involved in a wide array of projects, some of which include building on her writing skills through editorials and manuscripts. She is also going to be involved in protocol writing and data management for outcomes research projects in diabetes, depression, and oncology. Additionally, Shivangi is working towards a master's degree in Applied Health Economics and Outcomes Research. Through JCPH, Shivangi aims to build upon her foundation of outcomes research to promote valuable treatment, increase patient access, and ultimately leave a positive impact on healthcare.

Previous Fellows

Neetu Agashivala, MS

Executive Director, Health Economics & Outcomes Research,
Novartis Pharmaceuticals Corporation

Lauren Bartolome, PharmD

Senior Manager, Health Economics & Outcomes Research,
Pfizer

Kelly Fee Bell, PharmD, MSPHr

Director, Value Evidence and Outcomes,
GlaxoSmithKline

William Boyko, PharmD

Clinical Account Executive,
Express Scripts

Cat Bui, PharmD

Director, Health Economics & Outcomes Research,
AbbVie Pharma US, Inc.

Scott Bull, PharmD

Director, Clinical Development,
Johnson & Johnson Pharmaceutical
Research & Development

Beilei Cai, PhD, MA

Associate Director, Health Economics
and Outcomes Research,
Novartis Oncology

Jane Chang, MPH

Director, Global Outcomes & Evidence,
Pfizer

Michelle Choi, PharmD

Manager, Health Economics and Outcomes Research,
AbbVie

Grace Chun, PharmD

WW Scientific Content and US Market
Capabilities Manager
Bristol-Myers Squibb

Paul C. Cockrum, PharmD, DPh

National Director, Field HEOR,
Celgene

Arijita Deb, PhD

Associate Director
Merck

Laurence Djatche, PharmD, MS

Associate Director, Outcomes Research, Center of
Observational and Real-World Evidence (CORE)
Merck

QuynhChau Doan, MS, RPh, PhD

Medical Outcomes Science Liasion,
AbbVie

Batul Electricwala, PhD

Associate Director, Health Economics
& Outcomes Research,
Novartis Pharmaceuticals Corporation

John Fastenau, PhD, MPH, RPH

Senior Director, Patient Reported Outcomes,
Janssen Pharmaceutical Companies
of Johnson & Johnson

Feride Frech-Tamas, PhD, MPH

Executive Director, Epidemiology and Outcomes Research,
Lexicon Pharmaceuticals

Rahul Garg, PhD

Assistant Professor,
Chicago State University

Joseph Goble, PharmD

Senior Scientific Account Lead, Real World Value
& Evidence, Janssen Pharmaceutical Companies
of Johnson & Johnson

Boris Gorsh, PharmD

Director, Health Economics & Outcomes Research,
Pfizer

Geneen Graber, PharmD

President and CEO,
Dr. G's Pharmacy

Bill Grant, PhD

Associate Professor of Economics,
College of Business,
James Madison University

Amy Grogg, PharmD

Senior Vice President,
Strategy and Commercialization,
AmerisourceBergen Specialty Group

Kristy Hanson, PharmD, MS

Scientific Consultant,
United BioSource Corporation

Peter Hur, PharmD, MBA

Associate Director, Health Economics & Outcomes
Research, Novartis Pharmaceuticals Corporation

Tom Karagiannis, PharmD, MS

Director, Global Market Access and Pricing
Abbvie

Jennifer Kim, PharmD

Director, Global Price and Reimbursement,
AstraZeneca

John Kim, PharmD

Reimbursement Director, Global Pricing & Market Access,
Amgen

Nina Kim, PharmD, MS

Manager, HEOR Strategy and Evidence Generation
Novo Nordisk

Yoona Kim, PharmD, PhD

Head of Clinical Modeling and Analytics,
Proteus Digital Health

John Ko, PharmD, MS

Value & Evidence Strategy Director
and Global Medical Director
Alnylam

Amy Law, PharmD, MS

Director, Medical Affairs Research,
Intercept Pharmaceuticals

Junji Lin

Director, Outcomes Science and Services
ConcertAI

Jackie Lu, PharmD, MS

General Manager, Canada,
Pacira Pharmaceuticals

Mario Luong, PharmD, MPH

Manager of Operations,
UnitedHealth Group

Jeannie Menz, PharmD

Associate Director, Medical Information
and Communication,
Novartis Pharmaceuticals Corporation

Gilbert C. Ngan

Pharmacist: Part D Benefits Analyst,
CMS

Lina Nol-Heiring, MBA, RPh

Dermatology Sales Professional,
Valeant Pharmaceuticals

Engels Obi, PhD

Director, Global Outcomes Research,
Merck

Jacqueline B. Palmer, PharmD

Associate Director, Peer to Peer Marketing
Novartis

Jina Park, PharmD

Director, HEOR Communications & Capabilities
Novartis

Siyeon Natalie Park, PharmD

Staff Scientist
Geisinger

Hoa T. Pham

Medical Science Director,
ZS Pharma, Inc.

Ngan Pham, PharmD

Senior Manager, HEOR and Value Strategy
Biopharma, US Inc.

Craig Plauschinat, PharmD, MPH

Senior Director, Evidence Based Medicine,
Sanofi

Shibani Pokras, MPH

Senior Director, Value Evidence Leader,
GlaxoSmithKline

Karim Prasla, PharmD, MS

Vice President, Clinical Outcomes
Analytics and Research,
Magellan Health Services

Karina Raimundo, MS

Principal Health Economicst, Evidence for Access,
Genentech, Inc.

Swetha Raparla

Analytics Consultant,
Cigna

David Ray, PharmD, MBA, MPH

Senior Director, Head of US HEOR
Ipsen Biopharmaceutical

Rahul Sasané, PhD, MS, BPharm

Head, Health Economics & Outcomes Research
& Real World Evidence,
Cerevel Therapeutics, LLC

Veronica Sendersky, PharmD

RWE Regional Solutions Lead,
Excellent Pharma Consulting

Karishma Shelley, PharmD

Manager, HEOR Strategy and Evidence Generation
Novo Nordisk

Hemal Shah, PharmD

President/Founder,
Value Matters, LLC

Slaven Sikirica, MS

Director, US HEOR Hematology
Pfizer, Inc

Anh Singhanian, PharmD

Director, Key Account, Market Access,
Insmed Incorporated

Liz Stanley Smart, MPH

Associate Director, Health Economics & Outcomes
Research,
Boehringer Ingelheim

Bhavini Patel Srivastava, BSPS, MS

Associate Director, Global Value and HEOR
Jazz Pharmaceuticals

Kangho Suh, PharmD, MS

Assistant Professor,
University of Pittsburgh

Dusica Tasic

Health Economics Manager, Global Marketing,
GE Healthcare

Devi Thaker, PharmD

Director, PharmacoAnalytics,
GlaxoSmithKline

Melody Tran, PharmD, MS

Medical Outcomes Liaison,
Abbott Laboratories

Yuen Tsang, PharmD, MPH

Senior Medical Liaison, Managed Markets and Health
Economics & Outcomes Research,
Actelion Pharmaceuticals

Stuart Turner, BPharm, MPH

Executive Director Global Real World Evidence
& Data Science
Novartis

Stefan Varga, PharmD, MS

Associate Director, Outcomes Research,
Merck

Ashok Vegesna, PharmD, MS

Director, Medical Access,
Novartis Pharmaceuticals Corporation

Joel Wallace, PharmD, MPH, MBA

Senior Leader, External Affairs,
Chugai Pharmaceutical Co, LTD

Pin Xiang, PharmD

Sr Associate Director in HEOR Value Evidence
and Outcome Liaison
Boehringer Ingelheim

Esther Yi, PharmD, MS

Associate Director, HEOR, Medical Access
Novartis

Krista Yokoyama, PharmD

Senior Manager, Pharmacy Analytics,
Blue Shield of California

HEOR and Medical Access Fellowship Application Form

Please type or print

Date _____

Name: _____

Last	First	MI
------	-------	----

Address: _____

Street	City	State	Zip Code
--------	------	-------	----------

Phone: _____

Primary	Secondary
---------	-----------

Email: _____

Undergraduate and Graduate Degree(s) (date received or expected):

_____	_____
_____	_____

2-Year Programs (Preferred Degrees: PharmD, PhD, MS)

Please rank your site(s) of interest in order of priority (1 as highest priority):

- _____ Baylor Scott & White Health/The University of Texas at Austin/Novartis Pharmaceuticals Corporation
- _____ The University of Maryland/Novartis Pharmaceuticals Corporation
- _____ Thomas Jefferson University College of Population Health/Novartis Pharmaceuticals Corporation

Application Process (rolling submission, application deadline is November 6, 2020):

To apply, please email esther.yi@novartis.com and include the following materials:

- Cover Letter
- CV
- Include ranking of first-year fellowship site
- Email of 2 References

If offered an interview, the following documents will be requested:

- 2 Letters of Recommendation (sent via email from references)
- Unofficial Transcript

Requirements:

Graduate degree in a relevant discipline focused on pharmacy, health services research, health economics, epidemiology, or a related discipline (e.g., PharmD, PhD, MPH, etc.). A background in pharmacy or medicine and experience in outcomes research, health economics, or another related field of research is preferred. Excellent communication skills (oral and written). Demonstrated success in working in teams and independently.

Please email or send the required application materials to:

Email: esther.yi@novartis.com



NOVARTIS | Reimagining Medicine

Novartis Use Only | Date Received _____

