

Sidney Kimmel Medical College

Information for Prospective Students

2026 Cycle



Sidney Kimmel Medical College

OFFICE of ADMISSIONS

1015 Walnut Street, Suite 110
Philadelphia, Pennsylvania 19107-5083

Phone: 215-955-6983

Jefferson.edu/SKMC
SKMC.Admissions@jefferson.edu

The content of this document is provided for the information of the student. It is accurate at the time of printing but is subject to change from time to time as deemed appropriate by Sidney Kimmel Medical College in order to fulfill its role and mission or to accommodate circumstances beyond its control. Any such changes may be implemented without prior notice and without obligation and, unless specified otherwise, are effective when made.

A Code of Professional Conduct is in place at Sidney Kimmel Medical College at Thomas Jefferson University. It embraces ethical standards of professional conduct for the Thomas Jefferson University community including students, faculty, administrators and house staff. Details of the Code are contained in the Student Handbook.

Mission Statement

Sidney Kimmel Medical College is committed to: educating physicians who will form and lead the integrated healthcare delivery and research teams of tomorrow; discovering new knowledge that will define the future of clinical care through investigation from the laboratory to the bedside, and into the community; and setting the standard for quality, compassionate and efficient patient care for our community and the nation. We recognize that a diverse community is imperative to achieving excellence in patient care, education and research. As we carry out our mission, we are committed to the highest standards of professionalism and aspire to be a community of discovery, learning and inclusion.

Notice of Equal Opportunity

Thomas Jefferson University is committed to providing equal educational and employment opportunities for all persons without regard to race, color, national or ethnic origin, marital status, religion, sex, sexual orientation, gender identity, age, disability or veteran's status. The consideration of factors unrelated to a person's ability, qualifications and performance is inconsistent with this policy. Any person having inquiries or complaints concerning Thomas Jefferson University's compliance with Title VI, Title IX, the Age Discrimination Act of 1975, the Americans with Disabilities Act, or Section 504 of the Rehabilitation Act is directed to contact their Student Affairs Dean or Human Resources – Employee Relations, who have been designated by Thomas Jefferson University to coordinate the institution's efforts to comply with these laws. Any person may also contact the Assistant Secretary for Civil Rights, U.S. Department of Education, Washington, D.C. 20202, or the Director, U.S. Department of Education, Office for Civil Rights, Region Three, Philadelphia, Pennsylvania, regarding the University's compliance with the equal opportunity laws.



TABLE of CONTENTS

COLLEGE HISTORY	5
THE CURRICULUM: JEFFMD.....	6
MEDICAL EDUCATION AT JEFFERSON	7
DEDICATED FACULTY	9
CLINICAL TRAINING SITES.....	9
STUDENT LIFE	10
Philadelphia and Campus Life	10
Student Organizations and Societies.....	11
Campus Resources.....	12
MEDICAL SCHOOL ADMISSION.....	15
Requirements for Admission	15
Medical College Admission Test	16
Selection Factors.....	16
Early Decision	17
Combined MD/PhD Program.....	17
Dual MD/MPH Program.....	18
Cooperative Programs.....	19
Application Procedure	19
Application Timetable	20
EXPENSES AND FINANCIAL AID	20
STUDENT HOUSING	22
INCLUSION AND BELONGING	23
COMMUNITY OUTREACH	23
RESIDENCY MATCH RESULTS.....	26



A Message from the Vice Dean of Admissions

Welcome! I am thrilled you have chosen Sidney Kimmel Medical College at Thomas Jefferson University for your medical education. With your matriculation here, you will embark on an extremely challenging yet satisfying career. Your commitment to becoming a physician provides you the privilege of uniquely affecting the lives of others on a regional, national and global level.

Our JeffMD curriculum will help you meet the challenges facing medicine today in a comprehensive and innovative way. At Thomas Jefferson University, faculty and peers will support you in building upon and expanding your knowledge, skills and perspective. We will empower you to access resources that will promote lifelong learning.

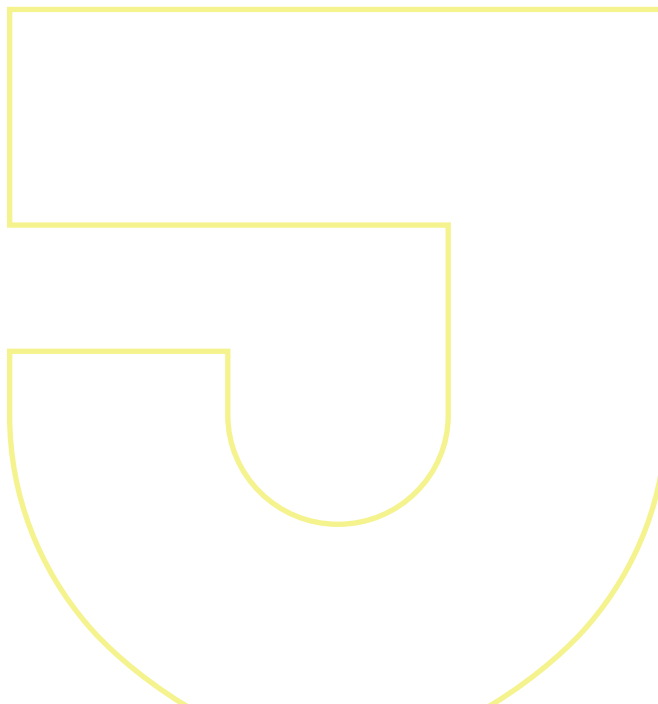
Our remarkable student body is our greatest asset. We admit students who are meaningfully engaged in helping the communities they serve. Our students collaborate interprofessionally and consider the multifaceted aspects of care ranging from medical, social and ethical components and beyond. Our faculty members are deeply committed to the professional and personal development of each student. At graduation, our students have gained not only a tremendous amount of knowledge and skill, but each person has also grown as an individual.

Although it's impossible to completely capture on paper the sense of family that exists here, I firmly believe that Sidney Kimmel Medical College offers the best clinically balanced medical education under the guidance of extremely caring and compassionate faculty and peers.

I look forward to offering you encouragement along your journey over the next four years and to seeing you achieve your full potential as future physicians.

A handwritten signature in blue ink that reads "Alisa LoSasso". The signature is fluid and cursive, with a long horizontal stroke extending to the right.

Alisa LoSasso, MD
Vice Dean, Admissions
Chair, Committee on Admissions
Sidney Kimmel Medical College





A Message from the Dean

You are considering the next step of a career in medicine and health care at an exciting time. Advancements in the science of medicine such as telemedicine, wearables, AI, genomics and robotic surgery are making health care more effective, more efficient and hopefully more inclusive. You are about to embark on an extraordinary journey that will challenge, inspire and ultimately shape you into the physicians of tomorrow. At Sidney Kimmel Medical College our mission is not only to provide you with leading-edge medical education but to foster an environment where compassion, integrity and collaboration thrive.

As the Anthony F. and Gertrude M. DePalma Dean of the Sidney Kimmel Medical College at Thomas Jefferson University, it is an honor and privilege to connect with students and share my vision to add to the medical college's historical record of transformation and legacy. Founded in 1824, Jefferson Medical College (now Sidney Kimmel Medical College) has awarded more than 34,000 medical degrees and has more living graduates than any other private medical school in the nation. Our faculty, students and alumni are positioned to lead the way to create a healthier future and to collaboratively develop and drive solutions to optimize health.

Leveraging the exponential increase in Jefferson's footprint and our ever-expanding, solution-oriented and service-minded faculty and staff, we are committed to not only cultivating an inclusive environment for the conduct of leading-edge research and compassionate and exceptional clinical care, but also to training the next generation of physicians with social conscience and a commitment to improving lives and redefining what's possible across the globe.

I take seriously the charge of training and preparing the next generation of world-class physicians to shape the future of health care to ensure that all populations will have equal opportunity to live long, healthy and productive lives. My ultimate vision is to establish Sidney Kimmel Medical College and Jefferson Health as a leading academic healthcare institution in Philadelphia and beyond. The strategy to accomplish this will build upon the existing collaborative and transdisciplinary values and traditions to cultivate a culture of excellence in clinical care, education and research. By joining our community, you become part of a distinguished student body, poised to achieve your educational and professional goals. Our innovative curriculum will prepare you to learn actively, think critically and make positive, impactful changes on health care. You join a community of students, faculty, staff, administrative leaders and local community partners committed to fostering an environment of trust and cooperation with respect for the work and efforts of others.

In 2024, Jefferson celebrated 200 years of tradition and transformation, discovery and design, hope and healing. We look forward to creating our third century with you. Together, we will fulfill our vital mission to improve lives.

Sincerely,

A handwritten signature in blue ink that reads "Said A. Ibrahim". The signature is fluid and cursive, with a long horizontal line extending from the end.

Said A. Ibrahim, MD, MPH, MBA

*The Anthony F. and Gertrude M. DePalma Dean
Sidney Kimmel Medical College*

President, Jefferson University Physicians



Our History

Founded in 1824, Jefferson Medical College began its 200-year history with a bold idea and \$550 that would forever change medical education around the world. The bold idea – to provide students with hands-on, supervised patient experience at a medical college, an approach not initially embraced by all in Philadelphia. The \$550 – what it would take to rent the Tivoli Theater (now Locust Walk) for a full year and open the “Hall of the Jefferson Medical College.” And the rest is history. Jefferson Medical College, which recently celebrated its bicentennial, became the fifth medical school in the U.S. and continues today as Sidney Kimmel Medical College – part of Thomas Jefferson University.

From medical pioneers like Dr. Samuel D. Gross, known as the “father of American surgery,” and Dr. William Williams Keen, the first to successfully remove a brain tumor, to Dr. John H. Gibbon, who invented the heart lung machine, the College’s many “firsts” continue to cement its enduring reputation as a bold institution that is shaping the future of medicine and education.

Today, Sidney Kimmel Medical College, among the largest private medical colleges in the U.S., has awarded more than 34,000 medical degrees and has more living graduates than any other private medical school in the nation. The College focuses on:

- Educating physicians who will form and lead the integrated healthcare delivery and research teams of tomorrow.
- Engaging physicians in discovering new knowledge to define the future of clinical care – from the laboratory to the bedside and into the community.
- Setting the standard for high-quality, empathetic, compassionate and efficient patient care for our community and the nation.

An innovator in medical education, Sidney Kimmel Medical College is internationally recognized for creating the Jefferson Scale of Empathy®, translated into 59 languages and fundamental to how we teach students the practice of medicine. In carrying out our primary objective – to educate competent, empathetic physicians and maintain high-quality care as the hallmarks of exceptional medical practice – Sidney Kimmel Medical College pursues excellence by:

- Selecting academically qualified students from diverse racial, ethnic and socioeconomic backgrounds who

display caring attitudes and the potential to mature into skilled, compassionate professionals.

- Developing intellectual curiosity in students and imparting scholarly habits that will ensure continued professional growth and development as physicians.
- Instilling in each student the highest standards of professional ethics and social responsibility.

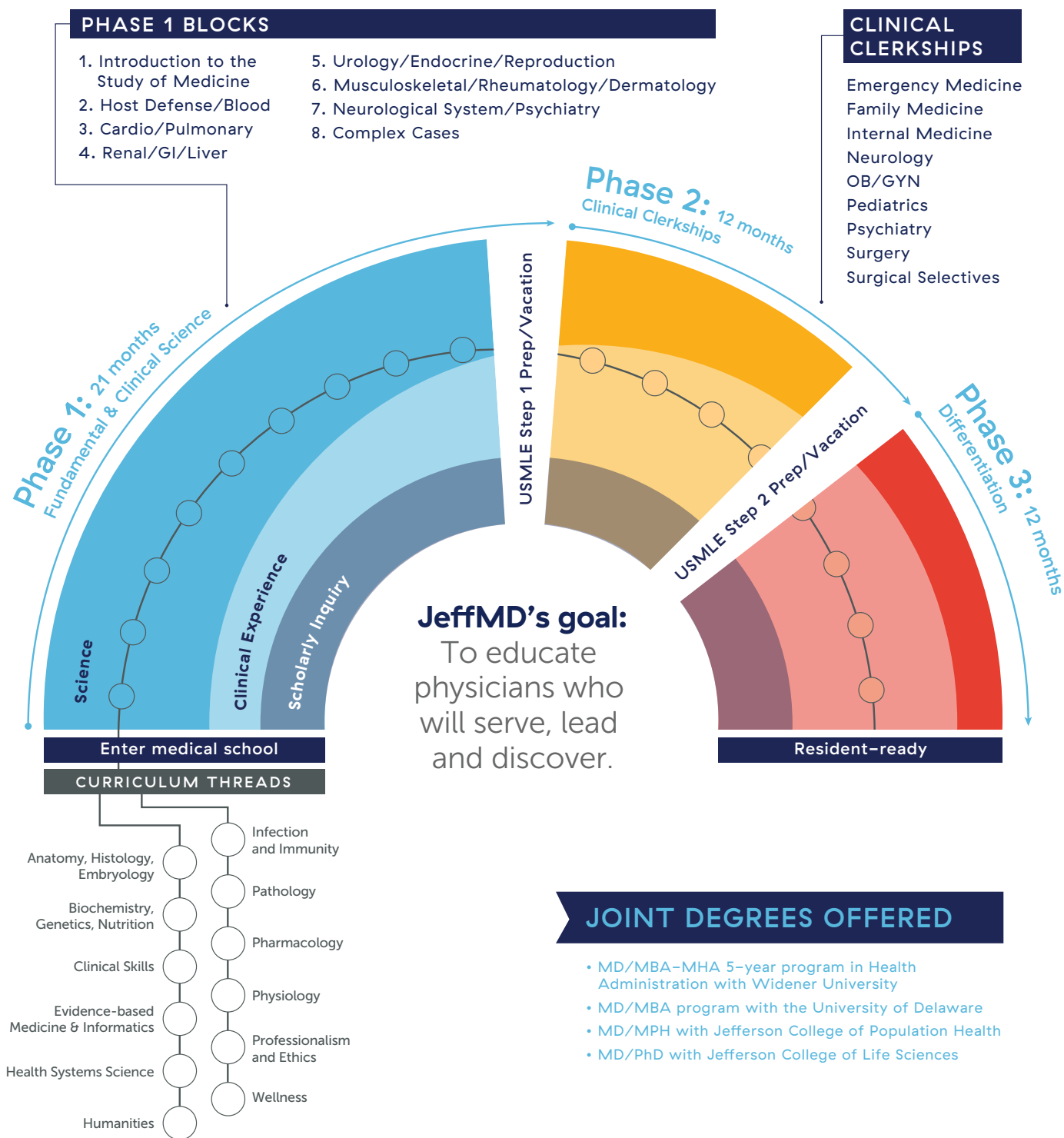
Sidney Kimmel Medical College is part of Thomas Jefferson University, a professions-focused R2 national doctoral university with 8,400 students. It now includes 10 colleges and three schools in diverse disciplines: College of Architecture and the Built Environment; Kanbar College of Design, Engineering and Commerce (School of Business and School of Design and Engineering); College of Health Professions; College of Humanities and Sciences; College of Life Sciences; College of Nursing; College of Pharmacy; College of Population Health; College of Rehabilitation Sciences; Graduate School of Biomedical Sciences; and Sidney Kimmel Medical College.

The University is also home to Jefferson Health, the 15th largest nonprofit academic health system in the country. Jefferson Health includes 32 hospitals throughout eastern Pennsylvania and South Jersey – offering students diverse opportunities for medical training.

In August 2024, Jefferson Health and Lehigh Valley Health Network (LVHN) finalized a transaction to combine their organizations into a single, integrated academic health system. This strategic combination positions Jefferson among the top 15 not-for-profit health systems in the United States, encompassing 32 hospitals and over 700 sites of care across eastern Pennsylvania and southern New Jersey. The expanded network enhances access to high-quality, affordable care, broadens clinical research opportunities and extends health plan offerings, thereby addressing health inequities in both urban and rural communities.

For students at Sidney Kimmel Medical College, this integration offers an enriched educational landscape. The combined system provides a diverse array of clinical training environments, from urban hospitals to community-based settings, allowing students to engage with varied patient populations and healthcare challenges. This breadth of experience is instrumental in cultivating adaptable, empathetic and skilled physicians prepared to meet the evolving needs of the healthcare landscape.

JeffMD Curriculum Overview





Medical Education

JeffMD: A Curriculum for Clinical Excellence

As a student, you will contribute to Sidney Kimmel Medical College's proud tradition of excellence. You will have many opportunities to develop as a leader in your profession – in clinical settings, research labs and community service. JeffMD, our curriculum, will support you by giving you sound fundamentals, combined with elements you can customize to your interests. You will find strong integration of clinical experience and science instruction throughout your four years here. In keeping with modern medical practice, you will gain the analytical skills to evaluate changing data and treatment options, sharpened emotional intelligence and comfort working in multispecialty teams. The study of medicine has always been one of the most deeply satisfying, exciting – and challenging – ways to develop your talents. JeffMD deepens all these truths at Sidney Kimmel Medical College.

What Drives JeffMD?

Mission

- To educate physicians who will serve, lead and discover.

Values

- Put the patient first.
- Foster respect and humility.
- Insist on integrity and personal responsibility.
- Develop a passion for learning, collaborative practice and continuous reflection.

Guiding Principles

A patient-centered perspective. Faculty and team members will constantly ask you to examine the doctor you are becoming through a patient's lens: "What do my patients need me to know, and how do they want me to act?"

Early clinical experience. Soon after matriculation, you will find yourself in contact with patients, developing clinical skills and knowledge while contributing to patient care in



ways both meaningful and appropriate to your early stage in medical school. As your knowledge and skills grow, so will your involvement in patient care.

Contextual learning. A constant interplay among foundational science, development of clinical skills and knowledge, and definition of a professional persona will create context and relevance for new learning.

Critical thinking. Independent projects, which you will be able to shape with input from a faculty mentor, will hone your critical-thinking skills. During time built into your schedule, you might choose to focus your individual research on medical education, population health, ethics, health systems, bench science or an area of humanities.

A range of instructional formats. You will do much of your learning in small groups that give teams responsibility for problem-solving. Lectures, simulation, individual study and reflection will also remain important parts of the instructional portfolio.

Assessments. Tests that depend on memorization will be less frequent than was historically the case. Faculty evaluations of your readiness will play a larger role in assuring you have the competencies to move to a new stage in the curriculum.

Earlier declaration of specialty interest. During the last phase of the curriculum, you will have the option of focusing your coursework in a specialty you choose to strengthen your preparation for residency and other post-graduate experiences.

How JeffMD Works

Phase 1

Students focus on establishing the foundational knowledge and skills needed in all areas of practice. While basic science is the primary concern, students also participate in clinical activities that engage them in seeing the complex interplay of medical realities, life circumstances and resources for care that contribute to effective options for prevention or treatment. In this phase, students identify the first question they want to explore in individual inquiry and begin work with a faculty mentor. At the end of the first year of studies, students have a break that can be used for vacation, scholarly inquiry or experiences abroad.

Between Phases 1 and 2

Two months without scheduled classes create time for students to prepare for and take Step 1 of the U.S. Medical Licensing Examination (USMLE) and to take additional vacation.

Phase 2

Students begin their clinical clerkships, but also continue to learn the science associated with the issues they are seeing in their rotations and to conduct independent inquiry.

Phase 3

Students customize a program of basic science, clinical skills training and individual inquiry to advance their preparation for a specialty of their choice. If students find their first choice does not retain their interest for a career, continued work on core competencies throughout this phase will make it possible to change direction. Phase 3 builds in the flexibility for students to arrange their electives, study for Step 2 of the USMLE and take a vacation in time frames that vary by individual. To learn more about JeffMD, please visit Jefferson.edu/JeffMD. You can also contact us with questions at jeffmd@jefferson.edu.

Dedicated Faculty

Sidney Kimmel Medical College faculty includes members of the National Academy of Medicine, the highest honor bestowed upon leaders in medical research, education and service. These distinguished scholars bring leading-edge knowledge directly from the forefront of medical discovery into the classroom, ensuring our students learn from those who are actively shaping the future of health care.

What sets our faculty apart is not merely their impressive credentials, but their genuine dedication to nurturing the next generation of physicians through meaningful mentorship and personalized guidance. As passionate educators, they invest deeply in each student's journey, taking time to understand individual strengths, challenges and career aspirations. Students consistently report that faculty accessibility and genuine interest in their development create an atmosphere of collaborative learning that enhances both academic achievement and personal growth.

Faculty members serve as advisors, research mentors and career guides, often staying connected with students after graduation and throughout their careers. This ongoing support network reflects our faculty's genuine investment in student success and their commitment to the broader medical community.

Clinical Training

Thomas Jefferson University Hospital

Located at 111 South 11th Street, Philadelphia, Thomas Jefferson University Hospital has a long history of providing the highest level of compassionate care to our neighbors. Within the Hospital and surrounding buildings, Jefferson's expert physicians maintain patient offices.

The Gibbon Building, located at 111 South 11th Street, is home to a variety of patient services and amenities, including the Atrium cafeteria, our gift shop, the surgical family waiting area, the Chinese Health Information Center and more.

The Bodine Center for Radiation Therapy/Sidney Kimmel Comprehensive Cancer Center at Jefferson (on the corner of 11th and Sansom streets) is the Philadelphia region's busiest radiation oncology center. The Center focuses on the collaborative efforts of highly accomplished radiation oncologists, surgeons, medical oncologists and other specialists in leading-edge cancer treatments.

Lehigh Valley Clinical Immersion

Lehigh Valley Health Network (LVHN) is now part of Jefferson Health. This creates the opportunity for students to complete most of their Phase 2 clinical training within the Lehigh Valley Healthcare System. Visit the link below to get an inside look at what makes the clerkship experience at LVHN exceptional.

[Jefferson.edu/academics/colleges-schools-institutes/skmc/undergraduate-medical-education/lehigh-valley-clinical-clerkships.html](https://jefferson.edu/academics/colleges-schools-institutes/skmc/undergraduate-medical-education/lehigh-valley-clinical-clerkships.html)

Jefferson Clinical Training Sites

Clinical training of our students is directed by faculty at Thomas Jefferson University Hospital and sites located in suburban Philadelphia and northeastern, central and western Pennsylvania, as well as in Delaware and New Jersey.

Most clinical training sites are within 60 miles of Jefferson's Center City Campus. Students can access sites via personal vehicle or public transportation.

Excellent opportunities are available for basic and clinical research at Sidney Kimmel Medical College and both University and affiliated hospitals.

Our graduates are well prepared for future careers having received a well-rounded education and clinical experience directed by an excellent faculty from diverse backgrounds including university, community and Veterans Administration medical centers.

Bayhealth Medical Center

Bryn Mawr Hospital

ChristianaCare Health System

Independence Health System Excelsior Health

Latrobe Hospital

Jefferson Abington Hospital

Jefferson Health – Einstein Healthcare Network

Jefferson Health – New Jersey

Jefferson Health Northeast

Lankenau Medical Center, Main Line Health

Lehigh Valley Health Network

Methodist Hospital

Morristown Medical Center

Nemours Children's Health, Delaware Valley

Overlook Medical Center

Wilmington VA Medical Center

WellSpan York Hospital

Philadelphia and Campus Life

One of the advantages of attending Sidney Kimmel Medical College is the chance to live in a city with charm and diversity. Thomas Jefferson University's Center City Campus is conveniently located within walking distance of theaters, museums, diverse neighborhoods, shopping areas and fine restaurants.

There are diverse cultural opportunities at the College and throughout the Philadelphia area. Within walking distance of campus is the home of the world-famous Philadelphia Orchestra at the Kimmel Center for the Performing Arts and the renowned Philadelphia Museum of Art. Exciting sports events are provided by professional teams such as Philadelphia Flyers hockey, Philadelphia Phillies baseball, Philadelphia Eagles football and Philadelphia 76ers basketball teams. Philadelphia hosts the Mummers Parade on New Year's Day and a variety of festivals throughout the year, including a special celebration on July Fourth. There are also a multitude of community and cultural activities and celebrations.



Sidney Kimmel Medical College at Thomas Jefferson University is proud to be situated near the most historic square mile in America: Independence National Historical Park. A few blocks from campus are the Liberty Bell, the nation's most revered symbol of liberty; Independence Hall, where the Declaration of Independence was adopted; Carpenters' Hall, site of the first Continental Congress; the Betsy Ross House; and the National Constitution Center. Visitors to Philadelphia can take advantage of ride-or-walk tours in double-decker buses, or take tours of the historic area.

Travel to and from Sidney Kimmel Medical College and its affiliates is made easy by an efficient network of roadways and public transportation systems. For leisure activities, the southern New Jersey seashore and the Pocono Mountains are less than a two-hour drive. New York City, Washington, D.C. and Baltimore are also within two hours by car and train.

As part of Thomas Jefferson University, the College is fortunate to be part of the vibrant scientific environment that Philadelphia offers. The area has the second-largest concentration of colleges and universities in the country, including five medical schools and many research institutions. As a member of the nation's first urban research park, Jefferson is involved with the other member institutions in cooperative biomedical research that links scientific findings from the laboratory to government and industry.

Student Life and Engagement

The Office of Student Life and Engagement (OSLE) works to enhance the overall student experience at Jefferson. Overseeing the areas of Student Activities, Student Organization Management and University Orientation, the office works diligently to create quality programs and services for our students. Through these cocurricular and extracurricular programs and services, the office provides opportunities for student engagement and personal growth. In collaboration with other offices within the Student Affairs Division, OSLE strives to address the holistic needs of students and create an environment of challenge and support, fostering student development.



Student Organizations and Societies

There are a number of recognized University and Sidney Kimmel Medical College organizations available to students. The Student Organization Directory is published electronically each academic year by the Office of Student Life and Engagement and is your guide to more than 100 organizations. You can access descriptions and contact information for these student organizations by visiting Jefferson.edu/SOS.

General Interest

Active Minds
 The Arrhythmias
 Cancer Awareness Prevention & Education
 Chinese Students & Scholars Association
 The Diversity Council
 Diversity, Inclusion and Multiculturalism in Educating Students (DIMES)
 Hands of Hope
 Jefferson APAMSA (Asian Pacific American Medical Student Association)
 Jefferson Arts Organization
 Jefferson Athlete Health Organization
 Jefferson Book Club
 Jefferson Business and Biotechnology
 Jeff Cares for Kids
 Jefferson Chamber Orchestra
 Jefferson Christian Fellowship
 Jefferson Dance Club
 Jeff EARTH
 Jeff HOPE (Health Opportunities, Prevention & Education)
 Jeff HEALTH (Helping East Africa Link to Health)
 Jeff ISPOR (International Society for Pharmacoeconomics & Outcomes Research)
 Jeff LGBTQ
 Jeff Medical Interpreters
 Jeff SAMOSA (South Asian Medical Student Association)
 Jeff SAPHE (Student Association for Public Health Education)
 Jeff SOAR (Students Organized Against Rape)
 Jeff YES (Youth Emergency Services)
 Jefferson Muslim Students Association
 Jefferson Physician Scientist Association
 Jefferson Public Health Society
 Jefferson Students for Human Rights
 Jewish Student Association (JSA)
 KIPP Healthy Living
 Latino Medical Student Association
 Louis Pasteur Roman Catholic Society
 Military Medical Students Association
 NoRx Improv

Puentes de Salud at Jefferson
 Refugee Health Partners
 RISE Philly
 Sidney Kimmel Medical College Student Council
 Science Outreach Network
 The Testostertones (a cappella group)

Honor Societies

Alpha Omega Alpha
 Gold Humanism Honor Society
 Hobart Amory Hare Honor Society

Sports

Badminton Club
 Jefferson Soccer Club
 Jefferson Volleyball Club
 Winter Sports Club

Professional Organizations

American Medical Association (AMA)
 American Medical Student Association (AMSA)
 American Medical Women's Association (AMWA)

Medical Interest Groups

American Geriatrics Society
 Delaware Medical Students Society
 DePalma Orthopaedic Society
 International Medicine Society
 Jefferson Anesthesia Society
 Jefferson Dermatology Society
 Jefferson Emergency Medicine Society
 Jefferson Internal Medicine Society
 Jefferson Medical Oncology Society
 Jefferson Otolaryngology Society
 Jefferson Pediatrics Society
 Jefferson Psychiatry Society
 Jefferson Radiology Society
 Jefferson Urology Society
 John H. Gibbon, Jr. Surgical Society
 OB-GYN Interest Society
 Med-Peds Society of Philadelphia
 Neurosurgery Student Interest Group
 Palliative Care Interest Group
 Pathology Student Interest Group
 Peter Amadio, Jr. Family Medicine Interest
 Physical Medicine & Rehabilitation Society
 Student National Medical Association (SNMA)
 Thomas Duane Ophthalmology Society
 Veterans Health Initiative
 Wilderness and Disaster Medicine



Campus Resources

Scott Memorial Library

Scott Memorial Library is the campus hub for access to print and non-print resources, study space and learning technologies.

The mission of Scott Memorial Library is to improve lives by strengthening the educational, research and clinical activities of the Thomas Jefferson University and Thomas Jefferson University Hospital communities by:

- Providing up-to-date, knowledge-based information
- Supporting evidence-based decision-making at the point of care
- Providing space and technology resources to support individual and group learning
- Managing computer classrooms and related educational software
- Preserving and promoting Jefferson's rich history and ongoing research

To accomplish this mission, the library staff provides consultation and instruction, as well as access to, and preservation of, knowledge-based resources. Study space and computers for study, learning and collection access are available on the first four floors of the Scott Building. The library also oversees public computers, computer labs and specialty computer classrooms across the Jefferson Center City Campus.

Scott Memorial Library is open to the Jefferson community 24 hours a day, seven days a week. The Service Desk on

the second floor is staffed 90 hours per week. The library's collection reflects the University's focus on health care, healthcare education, health research and the history of the health sciences. It includes approximately 41,000 books and bound print journals; over 5,000 electronic journal subscriptions; 3,000 plus e-books; the University Archives and significant holdings of rare books dating to the 15th century. The library also has a leisure print book collection and a current selection of popular magazines.

Jefferson.edu/ScottLibrary

Jefferson Humanities & Health

Jefferson Humanities & Health supports student engagement in the arts and humanities to promote essential skills related to health care, including close observation, critical thinking, communication and empathy. Throughout the year, our programs highlight the social contexts of health and wellness, lived experiences of diverse individuals and communities, and self-care for health professionals. Each academic year, Jefferson Humanities & Health explores a thought-provoking theme from a wide range of perspectives.

Student Community Engagement

We owe a lot to the Greater Philadelphia Area for its more than 300 years of combined community support of Jefferson. We all have individuals in our lives – teachers, mentors, relatives or friends – who have significantly impacted our lives by giving of their time to support us. There is nothing more rewarding than paying that support forward by giving back to the community and making a



real difference in the lives of others. Community service is an important part of Jefferson's legacy. It's who we are and what makes us stand out in the communities we serve. We have a variety of service opportunities available to our students – both in Center City and on our East Falls Campus.

Jefferson Recreation & Fitness

The Jefferson Recreation & Fitness Center, a division of the Office of Student Life & Engagement, is dedicated to creating a safe, supportive and friendly environment where the Jefferson community can acquire the knowledge and behaviors needed to achieve fitness goals, live healthier lives and gain a lifetime appreciation for holistic wellness. To best optimize wellness and happiness, focus on encompassing eight dimensions of wellness – Emotional, Environmental, Financial, Intellectual, Occupational, Physical, Social and Spiritual.

Each of these wellness dimensions needs attention. Ignoring a problem in one area often leads to problems in another. This may result in a "domino effect." Although balance plays an important part in life, it is nearly impossible to balance eight dimensions at once.

The Center aims to cultivate a supportive and connected community where students feel empowered to achieve their wellness, fitness and health goals. We provide access to relevant recreation programs, progressive facilities and state-of-the-art equipment.

Jefferson.edu/Fitness

Office of Student Affairs

Sidney Kimmel Medical College has many resources for students designed to maximize their education experience. The college offers all students the opportunity to meet and work with a wide variety of skilled personnel (e.g., student affairs deans, education specialists, mental health counselors) and to experience a variety of educational material and methods that are designed to support their curriculum throughout medical school.

The Office of Student Affairs and Career Counseling at Sidney Kimmel Medical College is a major support for students. Members of the Dean's staff: Charles A. Pohl, MD; Kristin L. DeSimone, MD; Leonard Levine, MD; and Wayne Bond Lau, MD, are available (located in The College Building, 1025 Walnut Street, Suite 116) to provide individual academic counseling, career counseling, personal advising and assistance with professional development and residency preparation.

Student Affairs is a division of the Office of the Dean of Sidney Kimmel Medical College and serves as the primary liaison for coordinating services and efforts on the behalf of students with faculty, administration and student-health services, including disability services and accommodations requests. The deans work closely with faculty and staff in the Office of Academic Affairs, Office of Diversity and Inclusion and the Wellness Programs and Student Leaders to help ensure student success. The deans and staff in Student Affairs are available by appointment or on a walk-in basis.

Jefferson.edu/MedicalCollegeStudentAffairs

Sidney Kimmel Medical College

STUDENT FACT SHEET

2025 Incoming Class

12,033

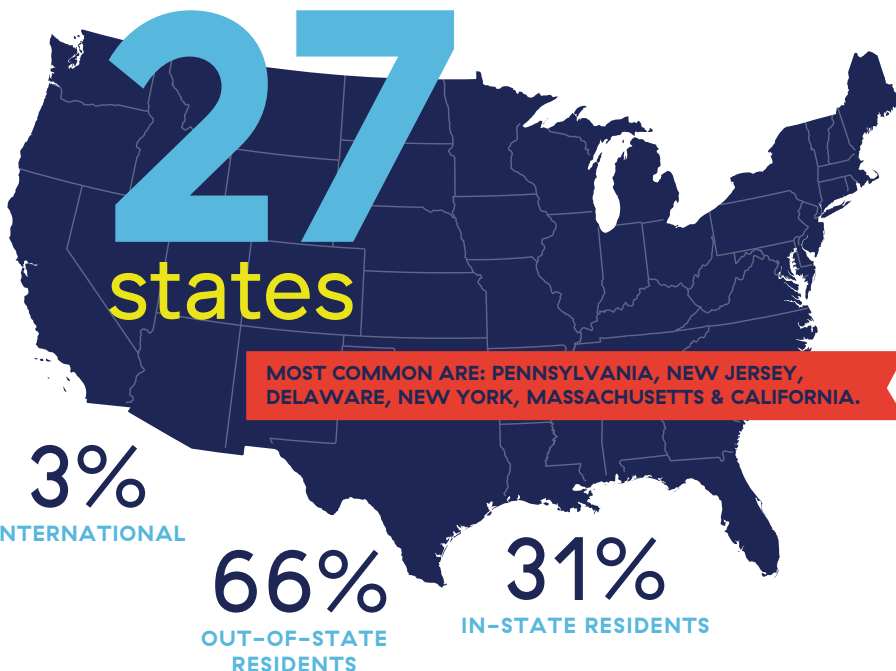
AMCAS APPLICANTS

3.5%

OF APPLICANTS
OFFERED ACCEPTANCE

286

STUDENTS ACCEPTED
TO THE CLASS OF 2029



54%
WOMEN

46%
MEN



3.84 AVERAGE TOTAL GPA

AVERAGE SCIENCE GPA 3.80

513 AVERAGE MCAT

112

GRADUATE AND UNDERGRADUATE
SCHOOLS
REPRESENTED



AGE RANGE OF MEDICAL STUDENTS

60%

20-23

32%

24-26

8%

27-39

SCAN TO
LEARN MORE



Medical School Admission

The medical profession is a career for those prepared for a lifetime of service to the ill, regardless of diagnosis. It has as its objective the development of professionals prepared to adhere to the highest standards of conduct and behavior asked of few others in our society.

The Medical College Admission Test and a baccalaureate degree from an accredited college or university in the United States or Canada are required, unless the student is being admitted through a Sidney Kimmel Medical College-approved scholars' program with modified requirements. Credit for foreign course work must be validated and/or accepted by an accredited U.S. college or university. It is preferable to have courses graded by the traditional grading system rather than by pass/fail grades.

The College concurs with the concept that certain minimum academic and technical standards are essential for the successful completion of a medical education and for the granting of the degree of Doctor of Medicine. Accepted applicants requiring special accommodations should contact the admissions office as early as possible.

Applicants should read and understand the technical requirements for admission outlined in this brochure and be able to meet them, with or without reasonable accommodations. If there are any questions regarding the technical standards, contact the Office of Admissions for clarification.

Contact the Admissions Office:
215-955-6983
SKMC.Admissions@jefferson.edu

Technical Standards – Required for Admission

As requirements for admission, promotion and graduation, a candidate for the MD degree at Sidney Kimmel Medical College must possess the abilities and skills to meet the technical standards listed below, with or without accommodations:

1. The ability to analyze, synthesize and solve problems, and reach diagnostic and therapeutic judgments.
2. Sufficient use of the senses of vision and hearing and somatic sensation necessary to perform a physical examination using observation, palpation, auscultation and percussion and the ability to execute motor movements reasonably required to provide both general patient care and emergency treatment.
3. The ability to relate to patients and to establish sensitive, professional relationships with patients.
4. The ability to work as an effective team member of the healthcare team.
5. The ability to communicate in writing and verbally with patients and medical colleagues with accuracy, clarity and efficiency in both routine and emergency conditions. Accommodation through use of a trained intermediary or other communications aide may be appropriate when this intermediary functions as an information conduit.
6. The ability to learn and perform certain laboratory and diagnostic procedures.
7. The ability to use good judgment in the assessment and treatment of patients.
8. The ability to accept criticism and to respond by appropriate modification of behavior.
9. No infectious disease that would prevent the performance of essential clinical activities required to complete the curriculum.
10. The perseverance, diligence and consistency to complete the medical school curriculum and to enter the independent practice of medicine.

Jefferson.edu/MedicalAdmittedStudents

Course Requirements

A strong preparation in the sciences basic to medical school studies is advised. A variety of college course formats and combinations, including biology, general and organic chemistry and physics are recommended. Courses taken to meet the basic requirements should be, in general, comparable to courses accepted for concentration in these disciplines. It is recommended that courses taken are supplemented by laboratory experiences.

Students may take upper-level science courses out of educational interest or to fulfill the requirements of their major. Taking additional science courses that cover material taught within the medical school curriculum is not required to gain admission. If advanced placement credits in required subjects are submitted, additional upper-level courses are encouraged. Breadth of education is expected.

The pursuit of some discipline in depth is encouraged. A successful medical student must effectively acquire, synthesize, apply and communicate information. These are skills that can be developed through a great variety of academic disciplines. Studies in the humanities, the social and behavioral sciences and the development of effective writing skills are strongly suggested.

Students are encouraged to explore honors courses, independent study or research to create a scholarly experience that will facilitate a lifelong habit of self-education. All academic requirements to attain a bachelor's degree must be completed prior to matriculation.

Medical College Admission Test

All MD and MD/PhD applicants are required to submit the results of the Medical College Admission Test (MCAT). The test should be taken no more than three years prior to the time of application. The best time to take the test is in the spring – prior to applying – so that your scores are available when you apply. Regular applicants must take the MCAT no later than the last sitting in September. All applicants must request that their MCAT scores be sent to the Admissions Office at Sidney Kimmel Medical College. For registration materials, contact your premedical advisor or the MCAT Program Office:

Association of American Medical Colleges (AAMC)
655 K Street, NW
Suite 100
Washington, DC 20001-2399
202-828-0600

students-residents.aamc.org/register-mcat-exam/register-mcat-exam

Sidney Kimmel Medical College Selection Factors

From an applicant pool of approximately 12,000, the Committee on Admissions each year selects a class of roughly 272 students. In addition to the applicant's academic profile, we look favorably on applicants who have demonstrated strong interpersonal and intrapersonal competencies, including a service orientation, cultural competence, teamwork skills, strong oral communication, ethical responsibility to self and others, reliability and dependability, resilience and adaptability and the capacity for improvement.

During each application cycle, the Committee on Admissions interviews approximately 700 applicants. On-campus interview invitations are sent to applicants between July and January. The interview serves several purposes:

- Information can be verified and clarified
- The applicant can explain unique aspects of the application
- The applicant can become better acquainted with the medical college
- Intellect, ability to communicate, personal qualities and motivation can be assessed
- Interact with students and faculty



The interview also aids in deciding which applicants will most likely benefit from the College's program and is a requirement for acceptance. A student who has previously attended another medical school and failed academically or been dismissed for unsatisfactory conduct will not be considered for admission.

The Board will not issue a license to an applicant who has been convicted of a felony under the act of April 14, 1972 (P.L. 223, No. 64), known as The Controlled Substance, Drug, Device and Cosmetic Act, or of an offense under the laws of another jurisdiction which, if committed in this Commonwealth, would be a felony under The Controlled Substance, Drug, Device and Cosmetic Act. Under most circumstances, admission will not be offered to an applicant with a felony conviction.

Final Acceptance for Admission to Sidney Kimmel Medical College is conditional on the following:

1. Satisfactory completion of current enrollment.
2. Meeting all entrance requirements, including all academic and technical standards of the College.
3. Satisfactory health.
4. Agreement to comply with the rules and regulations of the Thomas Jefferson University and code of professional conduct.
5. Agreement to accept curriculum changes as approved by the faculty and tuition changes as determined by the Board of Trustees.
6. A successful criminal background check.
7. Identity verification.

Pre-Application Programs to Consider

Early Decision

Sidney Kimmel Medical College participates in the Early Decision Program (EDP). Students participating in this program must submit an application and all credentials no later than August 1 of the application year to American Medical College Application Service (AMCAS). A decision will be made concerning each application by October 1 so that candidates who are not offered places in the class have adequate time to seek acceptance to other medical schools. The EDP program should be a consideration by those applicants who strongly desire to attend Jefferson and have an excellent academic record.

Combined MD/PhD Program

Students in the MD/PhD Program take courses at both Sidney Kimmel Medical College and Jefferson's College of Life Sciences. Studies begin in Sidney Kimmel Medical College. Students complete research rotations before and/or during vacations in Phase 1. Current Topics in Translational Biomedical Research: (1 credit each semester). After completing Phase 1 in Sidney Kimmel Medical College and the USMLE Step 1, students select a thesis mentor and PhD Program in the College of Life Sciences where they complete study for the PhD.

Credits are awarded for Phase 1, accounting for a substantial number of the credits required for the PhD thesis. In addition, six didactic credits and 20 research credits are awarded for MD/PhD specific coursework completed during Phase 1. Thus, MD/PhD students should be able to fulfill most remaining coursework early, providing significant time for bench research. Some courses are required of MD/PhD students in all PhD programs and are listed below. Other requirements are program specific and listed with the appropriate PhD program. As much of the remaining coursework as possible should be completed during the first year in the College of Life Sciences.

During the second, third and fourth years of graduate education, each student will focus on the maintenance and continued refinement of the student's clinical skills through attendance and participation in clinical rounds. Attention will be given to the development of the student's interviewing skills and their ability to write a history and physical. To fulfill the requirements, the student can choose among or use some combination of the following: JeffHOPE Clinics; Internal Medicine morning rounds, which consist of formal physical diagnosis rounds and morning report; participate in resident-led clinical skills sessions as arranged by the Jefferson Physician Scientist Association; choose preceptors in different clinical areas

in order to gain a better exposure to the patient population and lifestyle of these various specialties.

The PhD degree is usually completed within four years, although there is the possibility of a fifth year if requested by the student and mentor. In any event, the defense of the PhD thesis must be completed before returning to Sidney Kimmel Medical College. After completing the PhD degree, the student returns for Phase 2 and Phase 3, completing clinical studies. The dual MD/PhD degree is awarded at Commencement following Phase 3.

DIMER Program

The Delaware Institute of Medical Education and Research created the DIMER Program to provide an opportunity for Delaware residents to obtain a high-quality medical education. DIMER currently has four partners that keep this program thriving: Delaware Higher Education Office; ChristianaCare Health System Delaware Branch Campus; Philadelphia College of Osteopathic Medicine; and Sidney Kimmel Medical College. As the medical school for the state of Delaware, each year the College reserves up to 20 places in the incoming class specifically for Delaware residents. Applicants must be legal residents of Delaware and meet all of our prerequisite requirements. Sidney Kimmel Medical College is the official medical school of Delaware.

The Physician Shortage Area Program

The Physician Shortage Area Program (PSAP) admits students from rural areas and small towns who are committed to practicing in a similar area. Priority will be given to those planning to practice family medicine, although applicants planning other specialties, or unsure of their future specialty, will also be given consideration. Since the program began in 1974, we have trained more than 400 PSAP physicians, and the program has received national recognition in the *New England Journal of Medicine* and the *Journal of the American Medical Association*. Special consideration for admission and financial aid is given to students who have grown up in, or have substantial ties to a rural area or small town, and are also committed to practicing in a similar location. Priority is given to Pennsylvania and Delaware residents, and to applicants enrolled at Allegheny College, Bucknell University, Franklin & Marshall College, Indiana University of Pennsylvania, Pennsylvania State University, the University of Delaware and the University of Scranton.

All incoming PSAP students are provided with an advisor in the Department of Family and Community Medicine at the beginning of medical school. These advisors provide

curricular and career guidance and are available as mentors throughout all four years. PSAP students also take at least one of their required Phase 2 clinical clerkships in a smaller community outside the Philadelphia metropolitan area (currently the family medicine clerkship at Latrobe Area Hospital, or the family medicine, internal medicine, general surgery or obstetrics-gynecology clerkships at York Hospital). They are also encouraged to take at least one of their Phase 3 clinical rotations or electives in a rural area or small town, and are given priority to take their outpatient sub-internship in family medicine at a preceptorship in a rural location. Upon graduation, PSAP students take a residency of their choice, and are then expected to practice in a rural area or small town preferably in Pennsylvania or Delaware.



Questions should be directed to:
215-955-6983
SKMC.Admissions@jefferson.edu

Post-Matriculation Programs to Consider

JeffBEACON Program

The JeffBEACON Program promotes health equity for disadvantaged urban communities in Philadelphia. The program provides training for delivering non-biased, culturally appropriate, trauma-informed care and seeks to increase the diversity of healthcare professionals to better reflect the communities Jefferson serves. JeffBEACON is a cocurricular program led by faculty members experienced in community-based primary care. Interested students dedicated to community engagement can apply in the fall of their first year at Sidney Kimmel Medical College.

Dual MD/MPH Program

The MD/MPH dual degree option is an Integrated Research and Public Health year, and it is open to students who are currently enrolled at Sidney Kimmel Medical College. Students usually complete two rotations of Phase 3 before stepping out of medical school to complete MPH coursework and engage in mentored research activities. Students return to Phase 3 at Sidney Kimmel Medical College the following July. Accepted students may also defer their medical school start for one year to complete MPH coursework and conduct research.

MD/MPH students from Sidney Kimmel Medical College begin in the fall trimester (September) and finish their MPH coursework and related research activities in the summer trimester (June). Both degrees (MD and MPH) are conferred the following May. The Joseph Gonnella Scholarship covers a portion of MPH tuition and fees and is available to eligible students. Physicians with an MPH degree are prepared to make a difference at the patient's side and in the community. The degree provides advanced training in research and education and informs clinical practice with underserved populations. Physicians with an MPH degree are prepared to lead research initiatives, address pressing policy issues, assume leadership positions in the healthcare setting, in state and local public health departments, non-governmental health organizations and in the global context.

More information about the MPH program is available at Jefferson.edu/academics/colleges-schools-institutes/skmc/programs/md-mph.html



Information for High School Students

Penn State Accelerated BS/MD Program

The Penn State Accelerated Program, started in 1963, is a cooperative BS/MD program run by Sidney Kimmel Medical College and Pennsylvania State University. We jointly select qualified high school seniors to earn both their BS and MD degrees in seven years. Students spend three years at Penn State's University Park campus and four years at Sidney Kimmel Medical College. Students receive their BS degree from PSU after passing their first year at Sidney Kimmel Medical College and their MD degree after four years at the College.

University of Delaware Medical Scholars Program

The Medical Scholars Program (MSP), an educational collaboration between the University of Delaware and Sidney Kimmel Medical College, links college to medical school with an early admission process for qualified students. The first group of MSP students matriculated at Sidney Kimmel Medical College in 1994.

Application Procedure

All applications to Sidney Kimmel Medical College are submitted via the AMCAS application website. The application is available online only via the AMCAS website (aamc.org/students/AMCAS).

On receipt of the verified AMCAS application, the college will email notification of receipt. Also included will be instructions for completing the Sidney Kimmel Medical College online secondary application with online payment.

The Committee on Admissions will begin reviewing the application when all supplementary materials have been received, including:

1. The Sidney Kimmel Medical College Secondary Application
2. The non-refundable \$80 application fee
3. MCAT scores
4. Letters of recommendation required to complete the application

Letters of recommendation are to be transmitted via AMCAS only. Please be sure to review the AMCAS letter transmission policy.

A letter of recommendation from a pre-professional committee is preferred. Also acceptable are letters from individual faculty members (one letter each from biology, chemistry, physics and humanities, if possible). Letters can also be submitted from an employer, graduate program professors, research colleagues and anyone who you have interacted with in a personal or professional capacity who can vouch for your personal character, work ethic and desire to treat patients as a future doctor. Letters of recommendation and letters of interest are accepted through January 1.

It is the applicant's responsibility to see that the application is complete (the non-refundable \$80 application fee paid and the required letters of recommendation received) by the specified deadline. It is also the applicant's responsibility to maintain a current address in the University's Banner System throughout the application processing period.

Standard Application Procedure	
Timetable of Application and Acceptance for the First-Year Class	
Filing of AMCAS application deadline:	
Early Decision	August 1
MD/PhD	October 1
Regular MD	November 15
Receipt of supporting materials deadline:	
Early Decision	August 1
MD/PhD	October 15
Regular MD	January 1
Secondary application fee: \$80 (non-refundable)	
Acceptance decisions to applicants:	
Early Decision	October 1
All Other	October 15, rolling admissions through the completion of the current cycle.
Deposit to hold place in class is (applied to tuition) \$100, due no later than April 30. Deposit refundable prior to April 30.	
The commit to enroll deadline is June 17, 2026. Deferred admission deadline is May 1.	

Deferred Admission

A deferred admission option is available to students who are accepted and deposited. To request a deferral, write before May 1 to the Sidney Kimmel Medical College Dean of Admissions stating the reasons for deferral.

Expenses and Financial Aid

Expenses for the Academic Year 2025–2026	
Tuition and Fees	\$69,195
Library and Tech Fees	\$1,097
Books and Supplies	\$500
Instruments	\$250
Housing	\$16,742
Meals	\$5,324
Transportation	\$500
Medical/Dental (out of pocket if purchased)	\$450
Estimated Health Insurance	\$6,076
Miscellaneous	\$1,870
Estimated Loan Fees	\$476
Total	\$102,480

Expenses

The Board of Trustees reserves the right to amend or add to the regulations concerning fees and method of payment, and to make such changes applicable to present as well as future students in the College.

Financial Aid

The primary responsibility for financing the cost of medical education rests with the student and family. However, it is recognized that increasing numbers of people are unable to meet medical school costs without some type of assistance. The demonstration of need is the key factor in all financial aid awards. Determination of need is based upon confidential analysis of information provided by the student and family to the Free Application for Federal Student Aid (FAFSA) service.

Once need is established and the resources of the student and family are clearly identified, the student is directed to obtain a minimum of \$10,000 in the Federal Direct Unsubsidized Loan. If need exists beyond this amount, Thomas Jefferson University will attempt to meet a portion of this need from the University's loan and grant/scholarship funds. The University Office of Financial Aid also offers student information about the Federal Direct Graduate PLUS Loan private educational loan programs, and scholarships and loans offered through public and private agencies.



On or about November 15, Financial Aid Application information is emailed to all accepted students. Students accepted after this date will be sent an application email within two weeks of their acceptance date. Instructions for accessing the online financial aid application are included with this communication. Please note that only accepted students are able to access the online financial aid application. Late accepts should file applications within two weeks of acceptance.

Financial planning seminars are held throughout the year. A seminar for freshmen is held during orientation to acquaint incoming students with effective budgeting and debt-management techniques. In addition, the University Office of Financial Aid offers a seminar series, "Building a Financial Plan for School and the Future," which covers topics of debt management, personal budgeting, insurance planning, mortgages, investment planning and factors to consider before signing a professional contract. Students are encouraged to contact the University Office of Financial Aid.

Office of Financial Aid
1015 Walnut Street, Suite 115, Curtis Building
Philadelphia, Pennsylvania 19107
215-955-2867
financial.aid@jefferson.edu
Jefferson.edu/financial_aid

Medical Insurance

Health insurance is required for all students attending Thomas Jefferson University. Jefferson offers a comprehensive health plan designed specifically for students. If not covered by an equivalent policy of a parent or spouse, students are required to purchase the coverage offered by Jefferson. Coverage through the student plan will be billed in its equal halves, payable in July and December. Coverage through Jefferson's student policy is also available for dependents at an additional cost. Optional dental insurance is also available.

Sidney Kimmel Medical College provides a disability plan that pays a monthly benefit in the event of disability due to a sickness or injury.



Housing and Residence Life

The Office of Residential Life provides a living, learning environment that promotes a holistic approach to the residential experience. All three residence halls are centrally located on campus. Barringer, Orlowitz and Martin Halls are safe and comfortable facilities in an atmosphere that contributes to students' academic success. Living on campus will enhance your experience at the University – on-campus residents have the opportunity to meet students outside of their academic programs and benefit from the close proximity to classes and the hospital.



Barringer Hall

Barringer Hall offers a variety of unfurnished apartments ranging from studio-style apartments to three-bedroom apartments.

Martin Hall

The Martin Residence Hall offers community style living (community bathrooms, lounges and kitchens) while living in a private furnished room.

Orlowitz Hall

Orlowitz Hall offers a variety of unfurnished apartments ranging from one-bedroom to three-bedroom apartments.

Virtual floor plans and other details regarding each residence are available for you to review by visiting:

Jefferson.edu/ResidentLife

Off-Campus Housing

The Office of Residential Life and Thomas Jefferson University are not affiliated with any off-campus housing sites, nor is any particular property endorsed or recommended. Jefferson students and employees should perform due diligence to ensure that the off-campus property they are considering renting is insured and meets basic safety standards. If you are interested in off-campus options, please visit the off-campus housing site: Offcampus.Jefferson.edu.

If you would like to set up a virtual or in-person meeting, please email University.Housing@Jefferson.edu.

Inclusion and Belonging

At Thomas Jefferson University, we value and cherish each other for our unique identities and allow each person to bring their whole selves to work and school. We nurture a climate that fosters belonging, respect and value for all and encourages engagement and connection throughout the institution and community. By creating a diverse and inclusive environment, we have the best chance of providing the best individualized care to populations of patients and assuring that each patient has the opportunity to achieve their best outcome.

Sidney Kimmel Medical College recognizes that a diverse and inclusive community is imperative in achieving excellence in education, research and clinical care. Located in metropolitan Philadelphia, the College is mindful of all aspects of human differences such as socioeconomic status, race, ethnicity, language, nationality, gender, gender identity, sexual orientation, religion, geography, disability and age. The College's Office of Diversity and Inclusion Initiatives (ODII) weaves diversity, inclusion and excellence in patient care into the fabric of the medical college. All aspects of the College – from faculty affairs to graduate and undergraduate medical education – receive focused attention in the areas of education, environment, recruitment, retention, patient care and community engagement.

For students, ODII works closely with the College's Curriculum Committee and academic leadership to optimize curricular offerings within the Health Systems Science thread of the JeffMD curriculum on topics such as understanding cognitive patterns in decision-making, effective and personalized patient communication, social determinants of health and structural and cultural competencies. The office supports student organizations, educational activities and programs that build cultural awareness and enhance patient care capabilities across diverse populations, including national and regional student conferences, community health initiatives, heritage month programming and educational awareness weeks. ODII sponsors the Medical Spanish Program, a four-year longitudinal program aimed at developing Spanish-speaking physicians.

The College's efforts to create a welcoming and supportive educational environment are guided by a committee of students, resident physicians, faculty, department chairs and senior administration. The committee is responsible for developing institutional strategies that enhance educational excellence and community engagement within the medical college. It evaluates the effectiveness of programs within

the student, resident and faculty communities, makes recommendations regarding educational initiatives, policies and resources needed to achieve optimal learning outcomes, and oversees the implementation of its recommendations.

Jefferson.edu/SKMCDiversity

Community Outreach and Other Activities

Community Service

Opportunities for medical students to immerse themselves in community service are plentiful. Our students participate in community service from patient care and education at local high schools to medical care and patient advocacy at five area homeless shelters.

JeffHOPE

JeffHOPE (Health, Opportunity, Prevention and Education) is the largest student-run free clinic nationally by number of members, number of patients treated and operating budget. Under the guidance of Jefferson's Department of Family and Community Medicine, we hold weekly clinics at four homeless shelters and one needle exchange program in Philadelphia. Our mission is to address the psychosocial needs of our patients and empower them with the knowledge, resources and support to engage them in long-term professional health care. This can mean connecting patients to social services, collaborating with them in managing chronic health conditions, or simply being a source of support they can count on each week. Our secondary mission is to educate healthcare students and professionals about the social and medical issues surrounding homelessness. The men, women and children we see are often facing several challenges aside from their temporary or chronic homelessness, such as medical or mental illness, food insecurity, job insecurity or domestic violence, to name a few. JeffHOPE teaches us about our community, about people and plays an immeasurably valuable role in shaping us into capable and caring physicians.

Puentes de Salud

The purpose of this organization is to ensure the health and wellness of South Philadelphia's rapidly growing Latino immigrant community. It serves to educate future generations of community advocates, healthcare providers, educators and leaders by providing opportunities for responsible and respectful community engagement. Puentes de Salud believes that a comprehensive strategy



to promote wellness in any community must also target the social determinants of health. This organization offers Jefferson students in all disciplines the opportunity to engage in this community.

Refugee Health Partners

The goal of Refugee Health Partners is to improve and advocate for the health and well-being of the refugee population in Philadelphia. Over the past four years, Refugee Health Partners has sought to work closely with all populations and age groups of the refugee community. Through different projects such as student-run health clinics, health fairs and health education classes, Refugee Health Partners empowers refugees to be active participants in their own community and their own health care. Refugee Health Partners aims to work within the community to train future health professionals to practice competent and conscious refugee care.

Chinatown Clinic

Every Wednesday night, beginning at 5:30, Jefferson students volunteer at Holy Redeemer Chinese Catholic Church in Philadelphia's Chinatown neighborhood. Free medical services, such as flu shots, are provided to

patients facing language and cultural barriers, which makes accessing health services difficult. "The clinic's mission is to try to help as many people as we can," says Wayne Bond Lau, MD. "We see anywhere from 35 to 45 people in the span of about four hours."

JeffCARES for Kids

This organization gives students opportunities to work with children with disabilities, both through direct interaction and shadowing experts in the field. Activities include volunteering at the HMS School for Children with Cerebral Palsy and at the Variety Club after-school program for children with intellectual disabilities and shadowing at Jefferson and the Cerebral Palsy Clinic at Nemours Children's Health, Delaware Valley.

Jefferson Chamber Orchestra

The Jefferson Chamber Orchestra plays chamber music for both public and private audiences. The Chamber Orchestra has performed for weddings, cocktail parties, receptions and private parties, including the Sidney Kimmel Medical College White Coat Ceremony and Alumni Weekend. The group performs together at least four times over the course of the year and has performed as part of the Dean's Concert Series.

JeffLGBTQ

JeffLGBTQ serves as an educational resource, support and outreach group, and as a social/professional networking organization for sexual and gender minorities including gay, lesbian, bisexual, transgender and queer students. JeffLGBTQ is open to all students regardless of sexual orientation or gender identity. JeffLGBTQ coordinates educational events and hosts speakers to increase awareness within the Jefferson community regarding LGBTQ life and health disparities.

Student National Medical Association

Student National Medical Association (SNMA) is committed to supporting current and future underrepresented minority medical students, addressing the needs of underserved communities, and increasing the number of clinically excellent, culturally competent and socially conscious physicians. SNMA programs are designed to serve the health needs of underserved communities and communities of color.

Veterans Health Initiative

Veterans Health Initiative (VHI) focuses on addressing the gap in medical education pertaining to the veteran population and their unique healthcare needs by advocating for awareness of the veteran population in Philadelphia, advancing medical student knowledge regarding their health needs, and arming students with tools to use in the clinical setting. Typical events hosted by VHI include speakers, panel discussions with veterans, community engagement events, clinical learning experiences and others.

Global Learning

Jefferson offers students a wide array of opportunities to experience the world and learn about other cultures and places for credit as well as non-credit Global Enrichment Opportunities. In collaboration with their college or Jefferson's Global Centers, students may find opportunities to perform research abroad, complete a clinical rotation overseas, participate in an international service-learning program or join a faculty-led group experience abroad.

The Office of Study Away and Global Experiences maintains the Student Travel Registry for all Jefferson students participating in Jefferson-sponsored international travel and provides travel guidance for each stage of the international experience, from pre-departure to return. Information about recurring programs, and policies and requirements for global experiences can be found on the study away website.

Studyaway.Jefferson.edu

Office: 215-503-0149

Email: studyaway@jefferson.edu

ARTZ @ Jefferson

ARTZ Philadelphia is dedicated to enhancing the quality of life and well-being of people living with dementia and their care partners through joyful interactions around arts and culture. Our evidence-based programs connect people with dementia and those they love with artists, cultural organizations and each other. We help to build caring, supportive communities that restore and preserve the self-esteem and dignity of our constituents, regardless of their color, culture, where they live or their economic resources.

ARTZ Philadelphia programs run the gamut from facilitated in-museum conversations (defined very broadly to include verbal and non-verbal expression) to arboretum walks especially for care partners, to music, movement and art-making sessions. All are small-group programs, ensuring a welcoming, safe space in which everyone who participates feels seen, heard and valued. ARTZ Philly is a community-driven organization, with program co-development projects in historically underserved neighborhoods of Philadelphia. ARTZ Philly meets people where they are in the most concrete of terms: programs take place where our community members live, whether in continuing care retirement communities, in neighborhood parks or online for those who are unable to comfortably leave their homes.

Since 2016, Sidney Kimmel Medical College students and Jefferson health professions students have been involved with ARTZ Philly as volunteers and as participants in the one-of-a-kind, award-winning arts and dementia mentoring program. In ARTZ @ Jefferson (and its recently debuted sister program, ARTZ @ Jeff X 3), students are able to spend weeks getting to know people with dementia and care partners as their mentors. Mentors are able to guide and share their experiences with students regarding what it means to live with dementia. We often say that through these programs, Jefferson students and their mentors are changing the way health care works, one mentor and one student relationship at a time.

Sidney Kimmel Medical College

RESIDENCY MATCH RESULTS

Sidney Kimmel Medical College Class of 2025

SPECIALTY	NUMBER of STUDENTS	PROGRAM
ANESTHESIOLOGY	18	Hospital of the University of Pennsylvania – PA
		Icahn School of Medicine at Mount Sinai – NY
		Icahn SOM at Mount Sinai/Morningside West – NY
		Mary Washington Healthcare – VA
		Stanford University Medicine – CA
		Thomas Jefferson University – PA
		UCLA Medical Center – CA
		University of Chicago Medical Center – IL
		University of Miami/Jackson Health System – FL
CHILD NEUROLOGY	2	University of Pittsburgh Medical Center – PA
		Jefferson/Nemours Children’s Hospital – PA
DERMATOLOGY	4	Johns Hopkins Hospital – MD
		CMSRU/Cooper University Hospital – NJ
		Temple University Hospital – PA
		Thomas Jefferson University – PA
DIAGNOSTIC RADIOLOGY	6	University of North Carolina Hospitals – NC
		Brown University/Rhode Island Hospital – RI
		CMSRU/Cooper University Hospital – NJ
		Massachusetts General Hospital – MA
		Thomas Jefferson University – PA
		University of California San Diego – CA
		University of California San Francisco – CA
		Zucker SOM-Northwell North Shore/LIJ – NY

SPECIALTY	NUMBER of STUDENTS	PROGRAM
EMERGENCY MEDICINE	16	ChristianaCare – DE
		CMSRU/Cooper University Hospital – NJ
		Hospital of the University of Pennsylvania – PA
		Icahn School of Medicine at Mount Sinai – NY
		Northwestern Univ/McGaw Medical Center – IL
		Penn State University, Hershey Medical Center – PA
		University of Florida COM, Jacksonville – FL
		University of Massachusetts Chan SOM – MA
		University of Miami/Jackson Health System – FL
		University of South Florida Morsani COM - Tampa – FL
		UPMC Harrisburg – PA
		Yale New Haven Hospital – CT
FAMILY MEDICINE	18	Bayhealth Medical Center – DE
		Camp Pendleton Naval Hospital – CA
		ChristianaCare – DE
		Hospital of the University of Pennsylvania – PA
		Institute for Family Health/Harlem Mount Sinai – NY
		Loyola Medicine MacNeal Hospital – IL
		Mayo Clinic School of Grad Medical Education – FL
		Thomas Jefferson University – PA
		UCLA Medical Center – CA
		University of California, San Francisco – CA
		University of Colorado SOM, Denver – CO
		University of Illinois College of Medicine, Chicago – IL
GENERAL SURGERY	10	University of Vermont Medical Center – VT
		WellSpan Health/York Hospital – PA
		Albany Medical Center – NY
		Anne Arundel Medical Center – MD
		Case Western/University Hospitals Cleveland – OH
		Inova Fairfax Hospital – VA
		Jefferson Abington Hospital – PA

SPECIALTY	NUMBER of STUDENTS	PROGRAM
INTERNAL MEDICINE	58	Loma Linda University Medical Center – CA
		University of Maryland Medical Center – MD
		University of Minnesota – MN
		Washington University/Barnes-Jewish Hospital – MO
		WellSpan Health/York Hospital – PA
		Beth Israel Deaconess Medical Center – MA
		Cedars-Sinai Medical Center – CA
		ChristianaCare – DE
		CMSRU/Cooper University Hospital – NJ
		Duke University Medical Center – NC
		Hospital of the University of Pennsylvania – PA
		Icahn School of Medicine at Mount Sinai – NY
		Icahn SOM at Mount Sinai/Morningside West – NY
		Jefferson Abington Hospital – PA
		Jefferson Einstein Philadelphia Hospital – PA
		Johns Hopkins Bayview Medical Center – MD
		Keesler Air Force Base – MS
		Lankenau Medical Center – PA
		Loma Linda University Medical Center – CA
		Mayo Clinic School of Grad Medical Education – MN
		MedStar Georgetown University Hospital – DC
		Montefiore Medical Center/Einstein – NY
		NewYork-Presbyterian Hospital/Columbia University – NY
		NewYork-Presbyterian/Weill Cornell – NY
		NYU Grossman School of Medicine – NY
		NYU Grossman School of Medicine, Brooklyn – NY
		Penn State University, Hershey Medical Center – PA
		Rutgers New Jersey Medical School – NJ
		Rutgers Robert Wood Johnson Medical School – NJ
		Temple University Hospital – PA
		Thomas Jefferson University – PA

SPECIALTY	NUMBER of STUDENTS	PROGRAM
		University of South Florida Morsani COM, Tampa – FL
		University of California, Davis Medical Center – CA
		University of Colorado School of Medicine, Denver – CO
		University of Maryland Medical Center – MD
		University of Pittsburgh Medical Center – PA
		University of Vermont Medical Center – VT
		University of Washington Affiliate Hospitals – WA
		Vanderbilt University Medical Center – TN
		West Virginia University School of Medicine – WV
		Yale-New Haven Hospital – CT
INTERNAL MEDICINE – PEDIATRICS	1	University of Maryland Medical Center – MD
INTERVENTIONAL RADIOLOGY	3	Hospital of the University of Pennsylvania – PA
		Thomas Jefferson University – PA
		University of North Carolina Hospitals – NC
NEUROLOGICAL SURGERY	4	Rush University Medical Center – IL
		Thomas Jefferson University – PA
		University at Buffalo School of Medicine – NY
		University of Maryland Medical Center – MD
NEUROLOGY	9	Cleveland Clinic – OH
		Thomas Jefferson University – PA
		Tulane University – LA
		UCLA Medical Center – CA
		University at Buffalo School of Medicine – NY
		University of Massachusetts Chan SOM – MA
		University of Rochester/Strong Memorial Hospital – NY
OB-GYN	12	Beth Israel Deaconess Medical Center – MA
		Case Western/University Hospitals Cleveland – OH
		ChristianaCare – DE
		Lankenau Medical Center – PA
		Morristown Medical Center – NJ
		Pennsylvania Hospital – PA

SPECIALTY	NUMBER of STUDENTS	PROGRAM
OPHTHALMOLOGY	13	Riverside Community Hospital – CA
		Rutgers Jersey City Medical Center – NJ
		Thomas Jefferson University – PA
		Westchester Medical Center – NY
		Zucker SOM-Northwell North Shore/LIJ – NY
		Case Western/University Hospitals Cleveland – OH
		Columbia University/Harkness Eye Institute – NY
		Eastern Virginia Medical School – VA
		Harvard Medical School/Mass Eye & Ear – MA
		Jamaica Hospital Medical Center – NY
		Mayo Clinic College of Medicine – MN
		New York Eye & Ear Infirmary of Mount Sinai – NY
		Sinai Hospital of Baltimore – MD
ORTHOPAEDIC SURGERY	18	SUNY Downstate – NY
		Temple University Hospital – PA
		University of Texas Southwestern Dallas – TX
		Vanderbilt University Medical Center – TN
		Wills Eye Hospital – PA
		AdventHealth Florida – FL
		Boston University Medical Center – MA
		Dartmouth-Hitchcock Medical Center – NH
		Henry Ford Hospital – MI
		Jefferson Einstein Philadelphia Hospital – PA
		Johns Hopkins Hospital – MD
		MedStar Georgetown University Hospital – DC
		Montefiore Medical Center/Einstein – NY
		Ohio State University Medical Center – OH
		Penn State University, Hershey Medical Center – PA
		Rutgers New Jersey Medical School – NJ
		Rutgers Robert Wood Johnson Medical School – NJ
		SUNY Health Science Center at Brooklyn – NY

SPECIALTY	NUMBER of STUDENTS	PROGRAM
		Thomas Jefferson University – PA
		University of Arizona College of Medicine, Phoenix – AZ
		University of Chicago Medical Center – IL
		University of Rochester/Strong Memorial Hosp – NY
		Baylor College of Medicine, Houston – TX
OTOLARYNGOLOGY	3	Medical University of South Carolina – SC
		NYU Grossman School of Medicine – NY
		Thomas Jefferson University – PA
PATHOLOGY	4	University of Pittsburgh Medical Center – PA
		University of Washington Affiliate Hospitals – WA
		Brown University/Rhode Island Hospital – RI
PEDIATRICS	17	Children’s Hospital of Philadelphia – PA
		Dartmouth-Hitchcock Medical Center – NH
		Jefferson/Nemours Children’s Hospital – PA
		Johns Hopkins Hospital – MD
		Montefiore Medical Center/Einstein – NY
		Northwestern McGaw/Lurie Children’s – IL
		St. Louis Children’s Hospital – MO
		University of California, Irvine Medical Center – CA
		University of California, San Francisco – CA
		University of Pittsburgh Medical Center – PA
		University of Texas SW Medical School, Dallas – TX
		NewYork-Presbyterian Hospital/Columbia & Cornell – NY
PHYSICAL MEDICINE & REHAB	4	Stanford University Medicine – CA
		Thomas Jefferson University – PA
		Hospital of the University of Pennsylvania – PA
PLASTIC SURGERY	3	Lehigh Valley Hospital – PA
		University of California, Irvine Medical Center – CA
		Albany Medical Center – NY
PSYCHIATRY	17	ChristianaCare – DE
		Dartmouth-Hitchcock Medical Center – NH

SPECIALTY	NUMBER of STUDENTS	PROGRAM
		George Washington University – DC
		NewYork-Presbyterian Hospital/Weill Cornell – NY
		Richmond University Medical Center – NY
		Temple University Hospital – PA
		Thomas Jefferson University – PA
		University of Arizona College of Medicine, Phoenix – AZ
		University of California, Irvine Medical Center – CA
		University of Texas/Austin Dell Medical School – TX
PSYCHIATRY/PEDIATRICS	1	Johns Hopkins Hospital – MD
RADIATION ONCOLOGY	1	NY-Presbyterian Hospital/Columbia University – NY
THORACIC SURGERY	1	University of Maryland Medical Center – MD
UROLOGY	2	Hospital of the University of Pennsylvania – PA
		Jefferson Einstein Philadelphia Hospital – PA
VASCULAR SURGERY	2	Dartmouth-Hitchcock Medical Center – NH
		Mayo Clinic School of Grad Medical Education – MN



**Sidney Kimmel Medical College
at Thomas Jefferson University**

Office of Admissions

1015 Walnut Street, Suite 110
Philadelphia, Pennsylvania 19107-5083

Phone: 215-955-6983

SKMC.Admissions@jefferson.edu
Jefferson.edu/SKMC
Jefferson.edu/SKMCA admissions