

# Geriatric Medicine and Palliative Care: Quarterly Newsletter

ISSUE #2 | DECEMBER 2020 | FAMILY & COMMUNITY MEDICINE

*We hope you are enjoying our Division's Quarterly Newsletter to update both our Geriatric Medicine and Palliative Care Fellowship graduates on the exciting work of the Division. This is our second publication and we are thrilled that we have been able to maintain contact with our graduates and share updates with each other. We have many exciting new things to share – and we look forward to hearing about your work! To that end – we have created a very brief, mobile-friendly survey to gather general information about you, your interests, and how we can share information. Please take a minute and click here to complete – thank you in advance:*

[https://jefferson.co1.qualtrics.com/jfe/form/SV\\_5nCzIRKtw8ANpCB](https://jefferson.co1.qualtrics.com/jfe/form/SV_5nCzIRKtw8ANpCB)

## Jefferson Geriatrics is now the Center for Healthy Aging!



**Age-Friendly**   
**Health Systems**

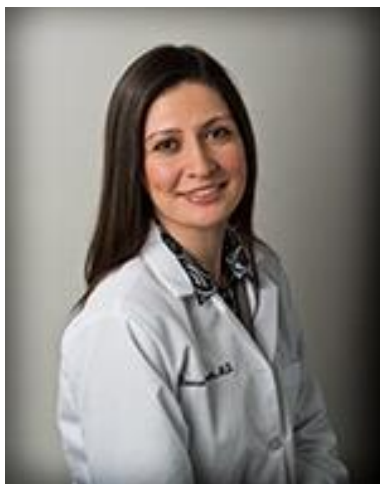
We are very proud of this name change as this a way to empower our patients to live their lives as happily and healthfully as possible through all stages and ages.

## The Center for Healthy Aging Introduces Initiative to Improve LBTQ+ Patient Care!!

The Center for Healthy Aging staff and providers enrolled in training in order to learn cultural competency and inclusive care in order for aging LBTQ+ patients to know they're welcome, seen and safe in their care. Please read the story: [https://thehealthnexus.org/the-center-for-healthy-aging-introduces-initiative-to-improve-lgbtq-patient-care/?utm\\_source=health\\_nexus&utm\\_medium=newsletter&utm\\_content=november\\_2020](https://thehealthnexus.org/the-center-for-healthy-aging-introduces-initiative-to-improve-lgbtq-patient-care/?utm_source=health_nexus&utm_medium=newsletter&utm_content=november_2020)

## New Research Direction from the Geriatrics Division at Jefferson

*Trailblazing collaborations between Geriatricians and other specialty services to help improve lives*



Given that so many musculoskeletal diseases are degenerative in etiology, affect millions of elderly and result in high morbidity and mortality, Dr. Parks and her mentee Dr. Rowena McBeath have engaged upon an interdisciplinary effort to investigate the effects of aging on one of the most common musculoskeletal diseases affecting the elderly: tendinosis. With Dr. Parks as her mentor, Dr. Rowena McBeath, M.D., Ph.D was awarded the Paul B. Beeson Emerging Leaders Career Development Award, which is funded by the National Institute on Aging (NIA) in collaboration with the American Federation on Aging Research (AFAR) and the John A. Hartford Foundation. Dr. Rowena McBeath, MD, PhD is an Assistant Professor in Orthopaedic Surgery at Thomas Jefferson, and a Hand and Upper Extremity surgeon at the Philadelphia Hand to Shoulder Center. After first-hand exposure to the many elderly patients with musculoskeletal concerns on the Geriatrics service at Jefferson and her clinic at the

*Rowena McBeath, MD, PhD*

Philadelphia Hand to Shoulder Center, Dr. McBeath became interested in the degenerative etiology of common musculoskeletal conditions, and has recently elucidated a heretofore unknown molecular etiology of tendinosis (<https://onlinelibrary.wiley.com/doi/full/10.1111/ace1.12934>). In the future, Dr. McBeath hopes to deliver the clinical applications of her discovery to the Center for Healthy Aging, thus bringing to fruition another bench-to-bedside approach from Thomas Jefferson – as established between the Geriatrics Division and the Philadelphia Hand to Shoulder Center -- to help improve lives.

Here are links to Dr. McBeath's clinical site and her most recent publication:

<https://www.hand2shouldercenter.com/our-physicians/rowena-mcbeath/>

<https://onlinelibrary.wiley.com/doi/full/10.1111/ace1.12934>



Susan Parks, MD  
Professor  
Director, Division of Geriatric  
Medicine and Palliative Care

**Thomas Jefferson  
University Hospital**

Nationally Ranked by *U.S. News & World Report*.

**Jefferson Health.**  
HOME OF SIDNEY KIMMEL MEDICAL COLLEGE



**IMPORTANT: REMEMBER TO VOTE FOR US NEWS AND WORLD REPORT BEST HOSPITALS! GET YOUR INFO HERE:**

<https://news.cuanschutz.edu/medicine/voting-for-u.s.-news-world-report-hospitals-ranking#:~:text=Each%20year%2C%20faculty%20who%20are,will%20open%20in%20February%202021>

If you would like to share any announcements or news for subsequent newsletters, please e-mail Susan Parks at [susan.parks@jefferson.edu](mailto:susan.parks@jefferson.edu) and Amy Burzinski at [amy.burzinski@jefferson.edu](mailto:amy.burzinski@jefferson.edu). Please be on the lookout for future newsletters highlighting the latest updates on our Division and accomplishments of our faculty, staff and alumni.