

Family and Community Medicine

State of the Department

Anna Flattau MD MSc MS

Alumni Professor and Chair, Family and Community Medicine

Enterprise Chief, Jefferson Primary Care

April 2, 2025



Our values have been constant through 50 years of change



Jefferson Primary Care and Community Medicine

Jefferson Primary Care

- The region's largest primary care system is a powerful driver of individual, community, and population health

Primary Care Research Center

- University-level structure aligns research across colleges & departments and with health system

Training Programs

- Building an interprofessional workforce for current and future primary care models

Community Medicine

- Providing holistic care where people live while respecting community self-determination

Specialized Centers

- Person-centered design for complex populations

Integration = chemical reaction

- **LVHN and regional integration:** scale and diversity of experience
- **University/ Health System/ Health Plan integration:** synergy and new opportunities
- We can consider ourselves **alchemists** as we evolve our complex organization



There is a wealth of potential in our scale

Clinical scale

- Over a million people receive comprehensive, longitudinal, relationship-based care within Jefferson Primary Care
- >150 clinical sites
- >2 million visits/ year
- ~ 40% of patients admitted to our hospitals

Educational scale

- 16 residency training programs
- 8 primary care fellowship areas
- ~270 medical students + 146 NP/PA/midwifery placements
- 2 medical student pipeline programs

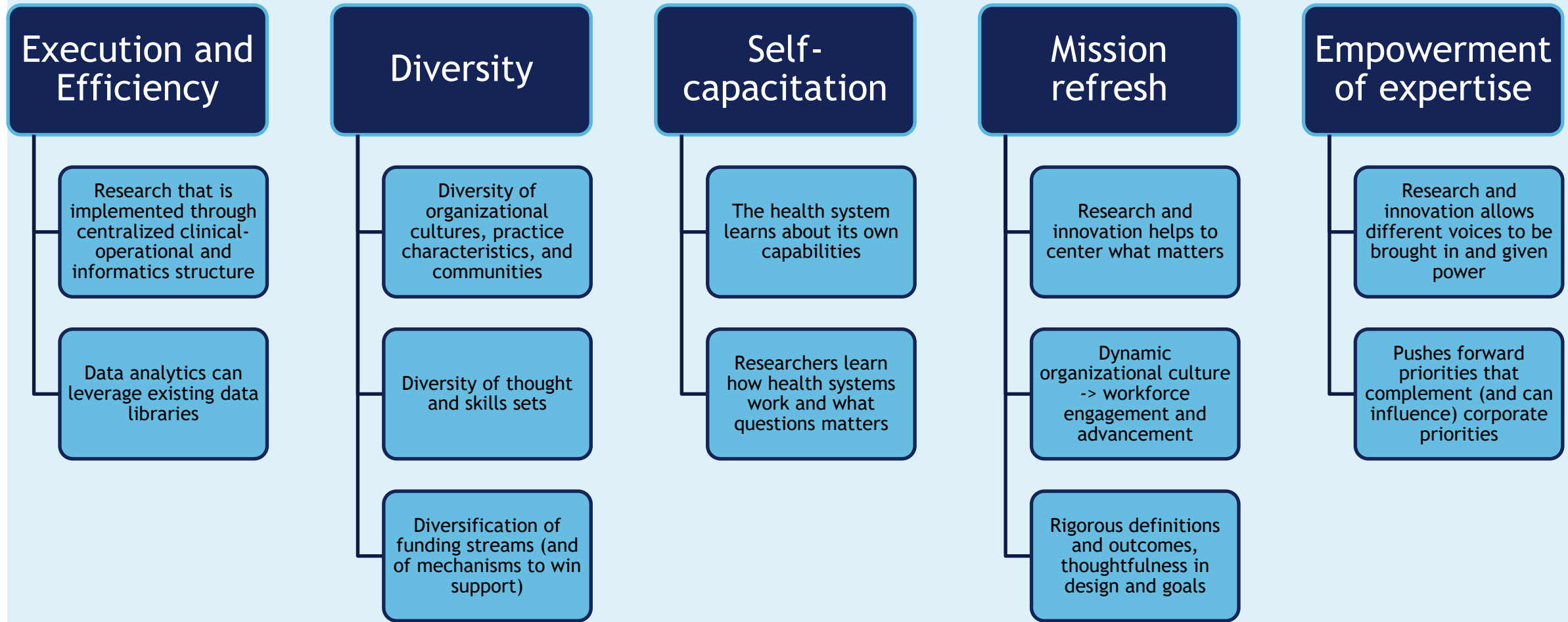
Research and innovation scale

- 83 IRB-approved or -exempted research protocols (49 TJUH, 34 LVHN)
- Clinical innovation supported by value-based payment environment (70% value-based contracts in legacy Jefferson)
- Interprofessional care models
 - Wyss Wellness Center, Sheller Bridge Clinic, FAB Center, home visiting programs, integrated behavioral health, community-based palliative care, and more

We have diversified opportunities for growth



The Power of Alignment between academics and health system



Academic culture enables survival through change



We are building our future as a growing department



Dr. Shannon Fleming
South Broad Attending



Dr. Julian Sacca-Schaeffer
Navy Yard Attending



Dr. Nicholas Maston
Geriatrics Division



Dr. Michelle Gorbonosov
Sports Medicine/ JFMA



Dr. Phil Skiba
Sports Medicine/
Fellowship Director



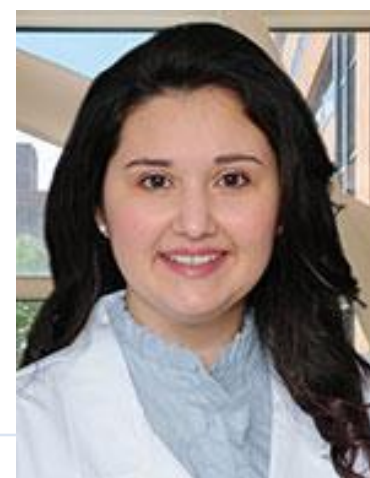
Dr. Hannah Facey
FAB Center/ Navy Yard



Dr. Bobby McClowry
Clerkship Director/ JFMA
OFFICE OF MEDICAL COLLEGE



Dr. Molly Allanoff
Director, Hospital Medicine



Dr. Noora Siddiqui
JFMA Attending

- Total: 58 faculty members
 - 9 full Professors
 - 17 Associate Professors
- Recruiting 10 new positions

Our work is recognized and honored



The 2024 Faculty Awards

- Stacey Robert MD (Excellence in Education)
- Elizabeth Collins MD (Excellence in Education)
- Erin Kelly PhD (Team Award)
- Maria Hervada-Page, MSS (Faculty Mentoring)
- Meera Shah, DO (Excellence in Education)
- Christopher Chambers, MD (Faculty Mentoring)
- Lara Carson Weinstein MD MPH PhD (Team Award)
- Kristin DeSimone, MD (Senior Portrait Recipient)
- Danielle Snyderman (Outstanding Clinician, Primary Care)
- Gillian Love, MD (Excellence in Education)
- Matthew Resciniti, DO (Excellence in Education)

Team Award

Lara Carson Weinstein, Erin Kelly, Rebecca Jaffe, Kory London, Megan Reed, Philip Durney, Jillian Zovodnick, Carolyn Kramer, David Beckmann, Keira Chism, Jahaira Lopez-Pastrana, Chris Martin, William Jangro



We care for ourselves and for each other

- Foster an environment that values and promotes faculty development and fulfillment
- Support academic promotion, faculty recognition, and career advancement
- Develop activities that support career satisfaction, professional fulfillment, and wellness
- Enhance coaching and mentoring programs
- Create community-building activities



Dr. Brooke Salzman appointed
Vice Chair for Faculty Affairs

Map of the department

3 Centers

Center for Immigrant
and Refugee Health

FAB Center

Center for
Supportive
Healthcare

Primary Care

JFMA
South Broad
1199 Passayunk
Dougherty practice
Navy Yard
Art Museum
Hospital Medicine
Maternity Care

3 Divisions

Geriatric Medicine

Sports & Exercise
Medicine

Palliative Care

Education • Clinical • Research • Community Medicine • Faculty Affairs • Social justice, inclusion, and equity

6 Functional areas

Community Medicine

Community Partner Symposium



Wills Eye at the Wyss Center



Wyss Wellness Center: a community-based model in South Philly

Hansjörg Wyss Wellness Center

The Wyss Wellness Center is a primary care center for everyone—regardless of immigration or insurance status—providing low-cost and accessible care to the South Philadelphia Community.

OUR SERVICES

- Primary care for children and adults and prenatal care
- Family planning, sexual & reproductive health services
- Labs, vaccines and cancer screenings
- Assistance with health insurance and public benefits enrollment
- Language interpretation

Welcome

Make Wyss your primary care home!

- 4,415 visits in 2024 (1,352 patients)
- 35% English, 25% Spanish, remainder multiple other languages
- 17% identify race as White or African-American, remainder other ethnicities from around the world
- 51% Medicaid, 28% Uninsured

Announcing a transformational gift

The Wyss Institute, under the leadership of **Dr. Marc Altshuler**, will enhance Jefferson Primary Care's services for low-income communities in NE Philadelphia

- **Strengthen** high-quality integrated, medical, and supportive services at Jefferson Primary Care practices in Northeast Philadelphia
-
- **Renovate** vacant space in a community-based care setting to create an integrated and welcoming primary care practice for the area's population.
- **Integrate** the care network with local community partners, operationalize Jefferson's wrap-around supportive services, and provide training and educational opportunities for Jefferson students and healthcare providers.



Jefferson Center for Refugee Health Academic Activities

Research fellow Nina Kvaratskhelia, MD, was awarded the **Dr. Barbara Starfield Distinguished Trainee Research Award** at the November 2024 North American Primary Care Research Group Meeting, for the top project out of hundreds of trainee submissions.

Her project, “*Pregnancy Outcomes and Complications in Refugees and Other Newcomers at a Family Medicine Practice in Philadelphia, PA*” was conducted with mentors Drs. Marc Altshuler and Colleen Payton



The FAB Center

Six years of
building the
leading model for
care of people
with complex
childhood-onset
conditions



Following the lead of a Community Advisory Board



ACGME: advocating for nationwide physician education in care of people with disabilities



Serving our nation's athletes at the Special Olympics in Turin, Italy

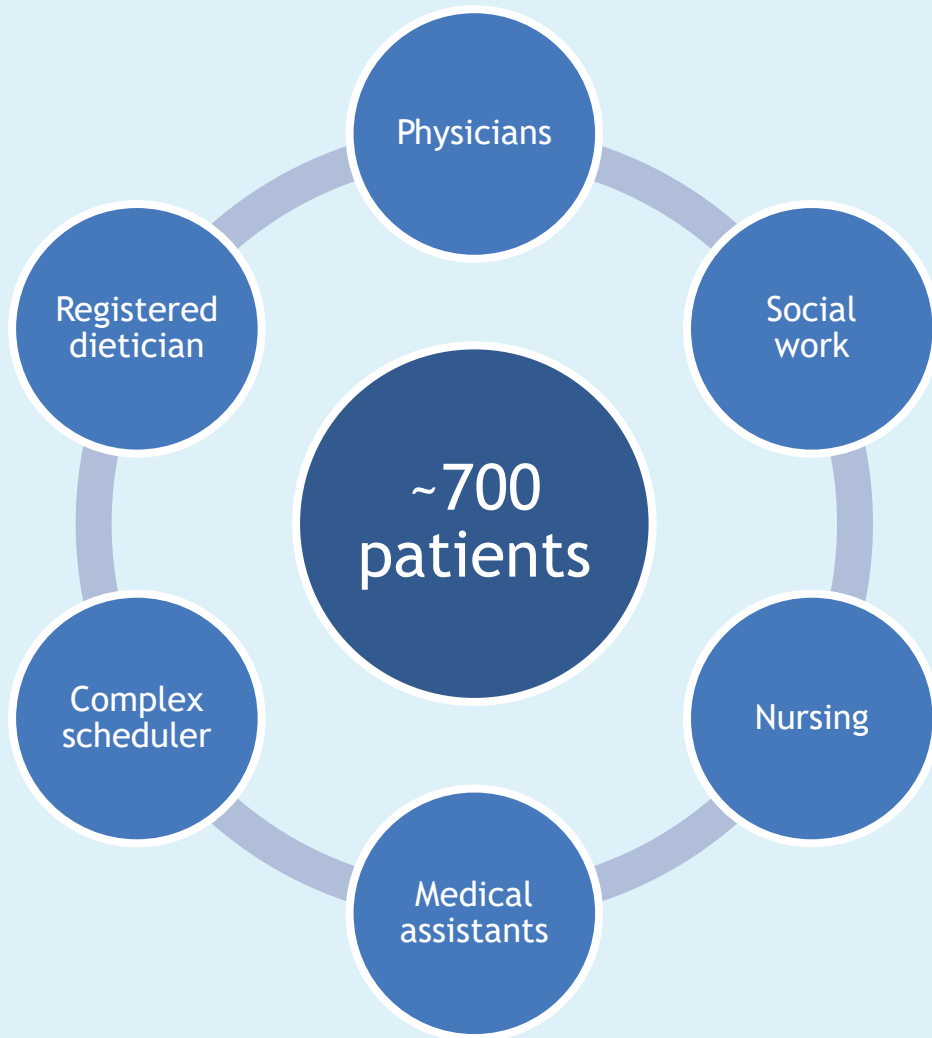


Innovations in educational programming

- **Jefferson Education Training: Primary Healthcare in IDD and Language Access (JET:PHILA)**
 - \$3 million, 5-year HRSA award to train medical students and family medicine residents to provide better care for patients with intellectual and developmental disabilities (IDD) and limited English proficiency (LEP).
- **Increasing Access to Quality Healthcare for People with Disabilities: A Co-Designed Educational Curriculum for Family Medicine Residents**
 - PADDC Grant providing \$100,000/year.
 - In 2023-2024, developed and implemented a 4-part didactic series for 4 Jefferson Family Medicine residencies.
 - In 2025, creating online educational modules for statewide distribution
- 12 medical students completed an elective in Primary Care for People with IDD
- 4 Family Medicine residents with Area of Concentration - incorporated residents from TJUH, Montgomery, Abington, and Northeast



Interprofessional and Award-Winning



- ❖ 2025 Provost's Interdisciplinary Team Award
- ❖ 2025 James B. Erdmann Team Award for Excellence in Interprofessional Collaborative Practice
- ❖ 2025 MLK Day Keeper of the Dream Award (Karin Roseman LSCW)
- ❖ 2024 PAFP Public Health Award (Dr. Mary Stephens)



Center for Supportive Healthcare

Reimagining a system that works for everyone



- Bridge Clinic was founded one year ago for community-based care of people with severe substance use disorder
- Teaching across residents, students, and addiction medicine fellows
- Research program includes T32 training program
- **Congratulations to Dr. Lara Weinstein on her upcoming investiture as the Sheller Distinguished Professor of Supportive Healthcare**

The Stephen and Sandra Sheller Consult and Bridge Program



Bridge Clinic Opening Event

ED
Stabilization

Inpatient addiction co-management
service

Bridge Integrated Primary
Care

Hospital to
HOME

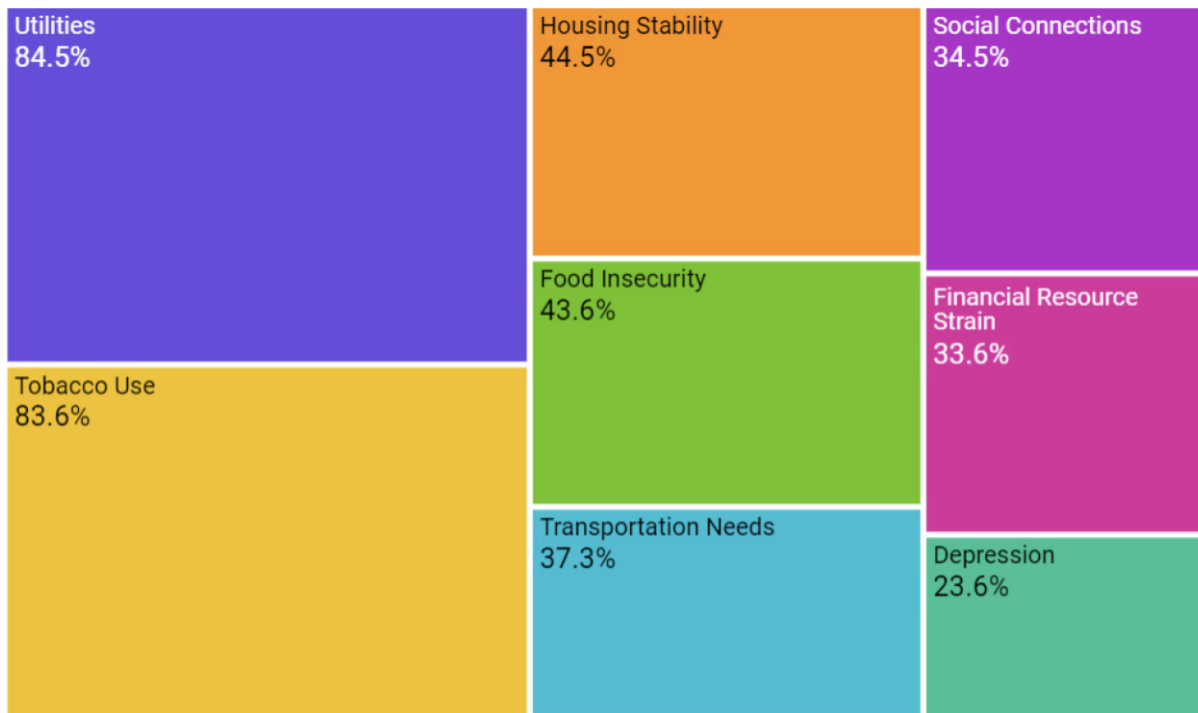
ASAM Level 4
partnership

Acute
physical
rehabilitation

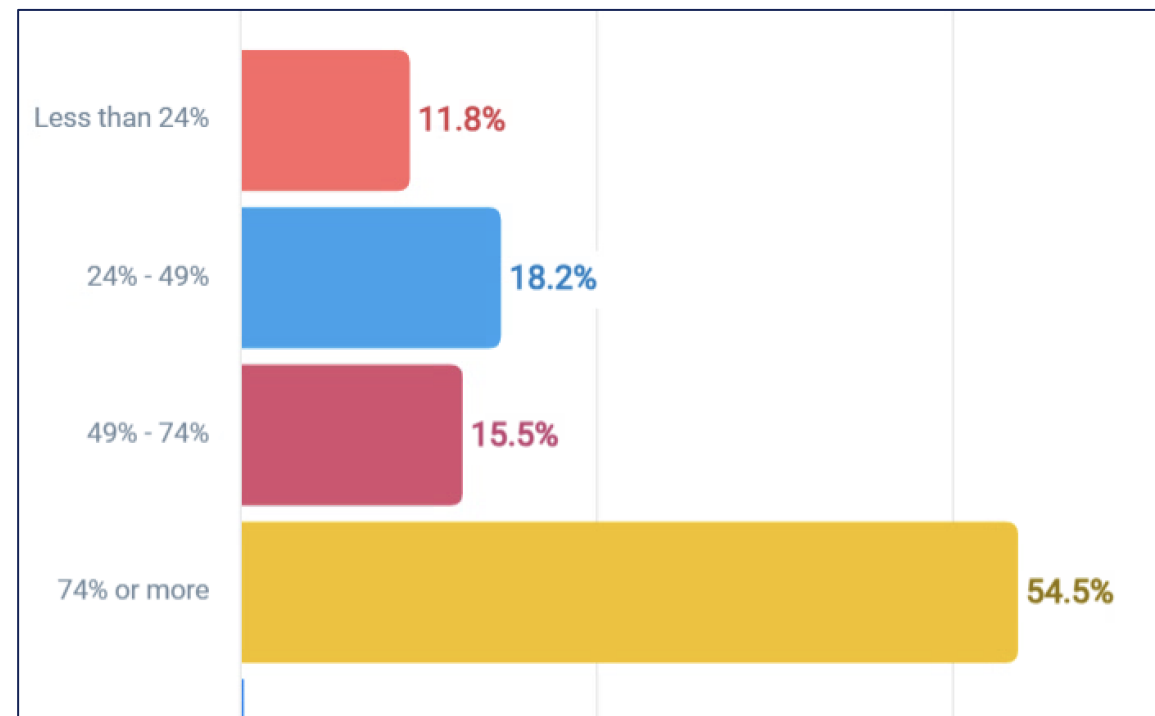
City Wellness
Initiatives

Risk Profile of Bridge Patients in Year One

Social drivers



Risk of hospitalization



Nationally honored for compassion in health care



Advocating through testimony at City Council hearing



Research in Supportive Healthcare

- R01 research award for \$3.1 million from the [National Institute of Mental Health \(NIMH\)](#) to study how and why social networks change over time for people with serious mental illness.
- Jefferson Bridge Program: Addressing the Syndemic of SUD/HIV/Viral Hepatitis through low barrier treatment and prevention services (SAMHSA; PI Weinstein)
- Jefferson Addiction Multidisciplinary Services CHW (City of Philadelphia, PI Weinstein)
- Jefferson Bridge Program: Addressing the Syndemic of SUD/HIV/Viral Hepatitis through Low Barrier Treatment and Prevention Services (Substance Abuse and Mental Health Service Administration PI: Weinstein, Co-I Kelly, Co-I Warrick-Stone)
- Jefferson Addiction Multidisciplinary Services Community Health Worker Infectious Disease Expansion Project (Philadelphia Department of Public Health, PI: Warrick-Stone, Co-I Weinstein)



Education in Supportive Healthcare

Addiction Medicine Fellowship

T32 JeffMAP program

Research Mentorship

Trainee clinical experiences at Bridge and on consult service

- Medical students
- Family Medicine and Psychiatry residents
- Infectious Disease Fellows
- Pharmacy residents

Primary Care Services

Academic primary care: it's about the denominator

A lab...

- For individuals' health journeys over time
- For understanding complexity
- For communities' health
- For care across settings including acute care episodes
- For diseases and conditions

A 'big tent' for inquiry and collaboration

- Engaged partners across medical specialties, health professions, settings

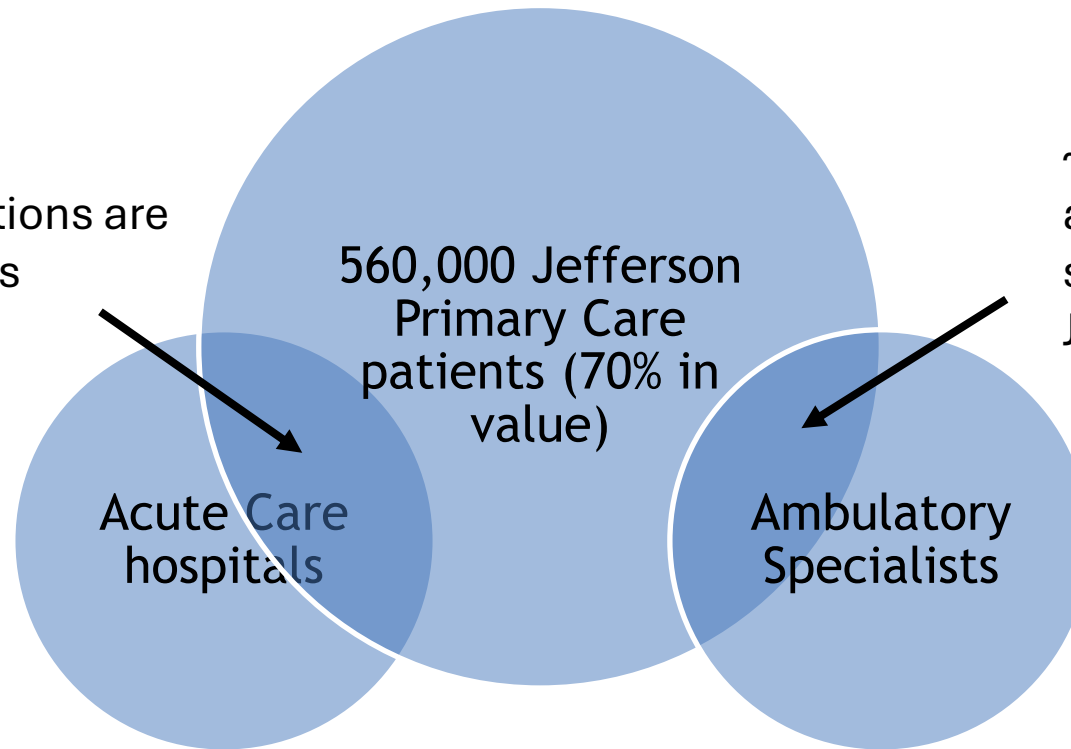
A match to a business model

- Our patients = value-based population

	Country or territory	Population (1 July 2022)
150	 Bahrain	1,533,459
151	 Trinidad and Tobago	1,495,921
152	 East Timor	1,369,295
153	 Estonia	1,350,091
154	 Cyprus ^[s]	1,331,370
155	 Mauritius	1,276,130
156	 Eswatini	1,218,917
157	 Djibouti	1,137,096
158	 Fiji	919,422
	 Réunion (France)	871,540
159	 Comoros	834,188
160	 Guyana	821,637
161	 Solomon Islands	781,066
162	 Bhutan	780,914
	 Macao (China) ^[t]	704,356
163	 Luxembourg	653,313

← Us

We care for our patients across settings, and our partnerships and opportunities reflect that



~40% of hospitalizations are JPC patients

~30% of ambulatory specialty visits are JPC patients

- *Reduce preventable admissions, ED visits, readmissions*
- *Reduce preference-sensitive admissions in full-risk contracts*
- *Optimize end-of-life care*

- *Reserve specialist capacity for complex cases and procedures*
- *Create options for efficient PCP-specialist interactions*
- *Keep 80% of care within Primary Care*

36

36

TJUH Family Medicine practices

Comprehensive,
relationship-
based care for
patients in
Center City and
South Philly

	Annual Visits	Active Patients
JFMA	47,641	23,794
Navy Yard	6,550	4,414
South Broad	4,178	2,506
Dougherty	2,990	1,747
East Passyunk	3,546	2,489
Total	71,308	37,322

We strengthened our foundations in quality and experience

- Revisited core workflows and quality infrastructure
- Measurable gains achieved across broad range of initiatives
- We have positioned ourselves to ensure ongoing improvement into the future

Ongoing resident QI projects address

- PrEP
- access to cancer screening
- fluoride treatment
- books for pediatric patients

HTN control 59.4% to 63.4%

7-day follow up (high risk) 36.2% to 40.8%

Breast cancer screening 80.6% to 84.5%

Colon cancer screening 64.2% to 68.6%

HRSN screening 367/ month to 525/ month

AWV completion rate 37.6% to 57.0%

“Likelihood to recommend” 84.7% to 87.7%

“Staff worked together to care for you” 84.3% to 87.1%

Integrated substance use screening and treatment

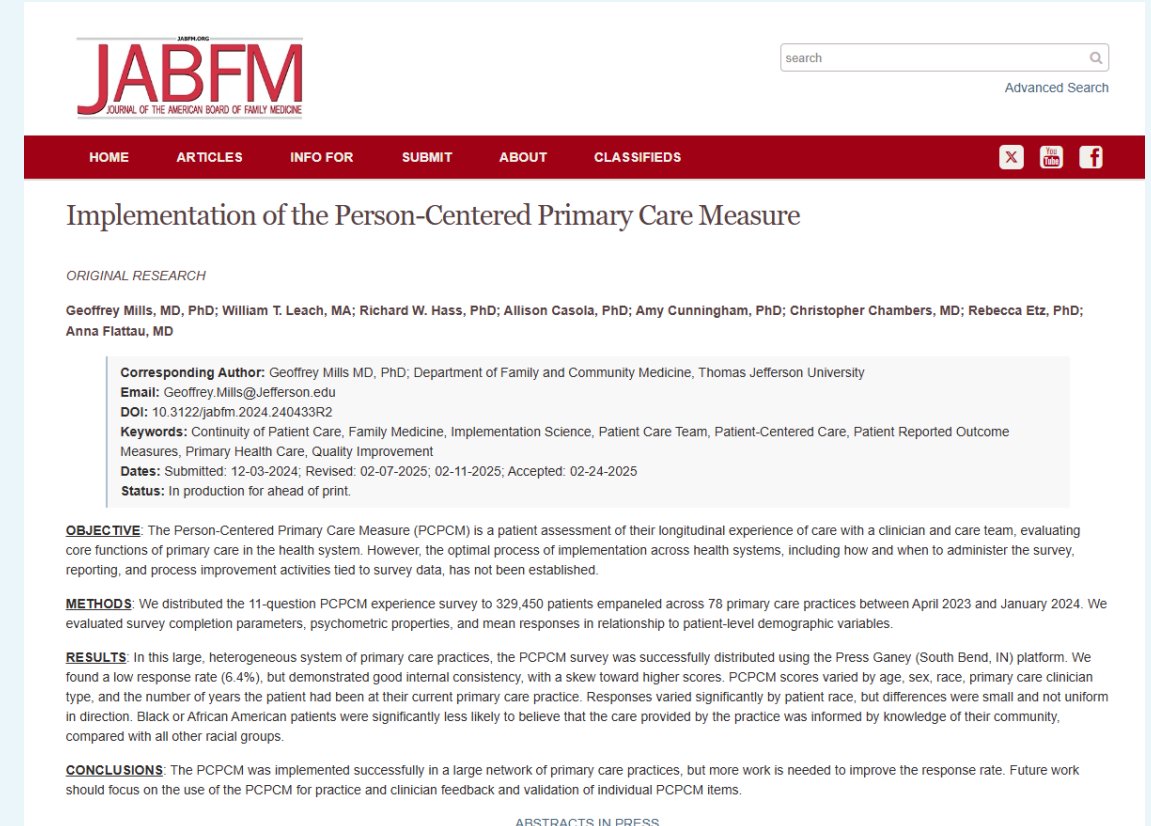


SAMHSA subcontract
(Drexel PI Sterling,
site PI Flattau)

IBX Clinical
Innovations Grant
(PI Jaffe)

Elevating our Quality Program: Leading on Measures that Matter

- The **Person-Centered Primary Care Measure** captures *longitudinal experience of care*
- Evaluates access, continuity, comprehensiveness, coordination, advocacy, family and community context, and goal-directed care
- **This is the first time this has been measured at scale in a large health system**
- **57,000 Surveys Completed as of February**
- Further directions
 - Working with marketing to improve the survey distribution
 - Validating measure items with operational data
 - Improving the patient experience



Primary Care Clinical Trials

- Health System Patient Cohort to Assess for Vaccine-Preventable and/or Therapeutic Treatable Infectious Diseases (Clinetic; PI Chambers)

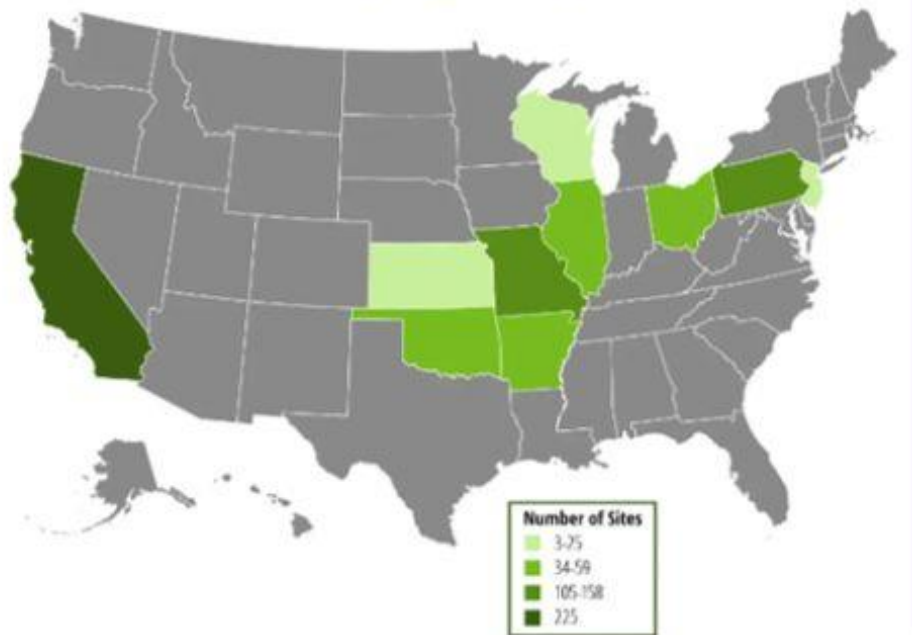


PCORI: Intensive lifestyle treatment for weight loss in primary care settings

Jefferson Health Awarded \$2.4 Million in PCORI Funding

Intensive Lifestyle Treatment for Weight Loss in Primary Care Settings

Participating Health Systems




6
Health Systems

2 among the
largest health
systems in the U.S.


52K
Adults


700+
Care Sites



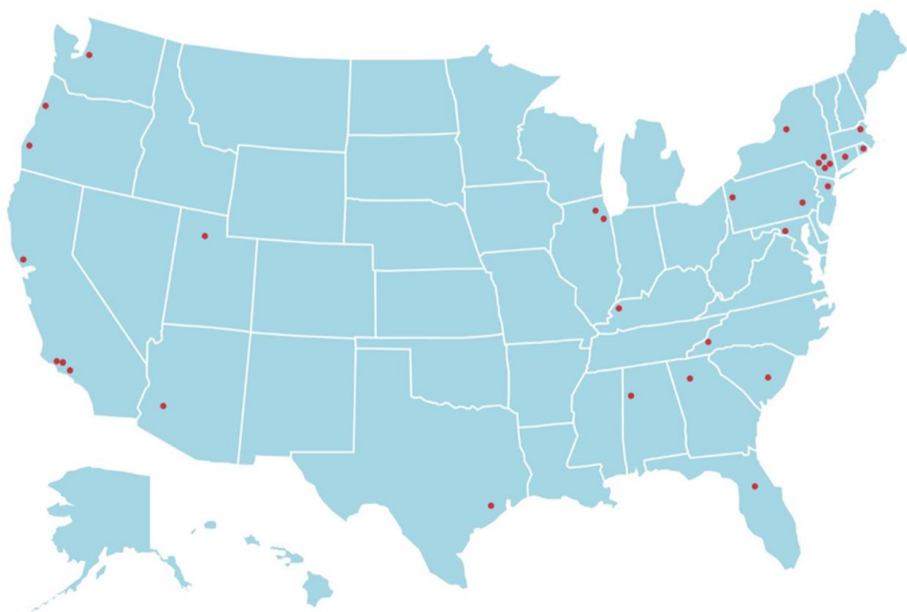
Amy Cunningham PhD,
Project Lead
PI Yehia, co-PI Flattau



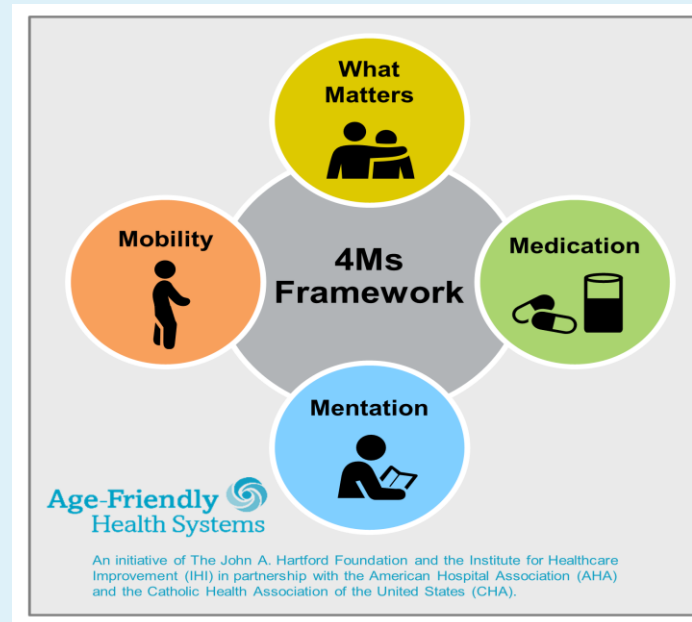
Division of Geriatric Medicine

Jefferson chosen for Age-Friendly System-Wide Spread Collaborative

30 Age-Friendly Health Systems Participating in the Age-Friendly System-Wide Spread Collaborative



- AdventHealth Hendersonville
- Advocate Health
- Banner Health
- Bassett Health
- Cedars Sinai
- CommonSpirit
- CVS MinuteClinic
- Grady Health
- Greater Los Angeles VA
- Hackensack Meridian Health
- Hartford HealthCare
- Hebrew Senior Life
- Jefferson Health PA
- Luminis Health
- MediSys Health Network
- Mount Sinai Health System
- Northwell Health
- Oregon Health Sciences University
- Orlando VA
- Owensboro Health
- Presbyterian Senior Care Network
- Providence
- Ralph H. Johnson VA Health Care System
- Roseburg VA
- St. John's Hospital New York
- Sutter Health
- UC Irvine
- University of Alabama at Birmingham
- University of Utah
- UT Health



Led by
Dr. Krissy Swartz

Interprofessional Team Supporting Programmatic Growth

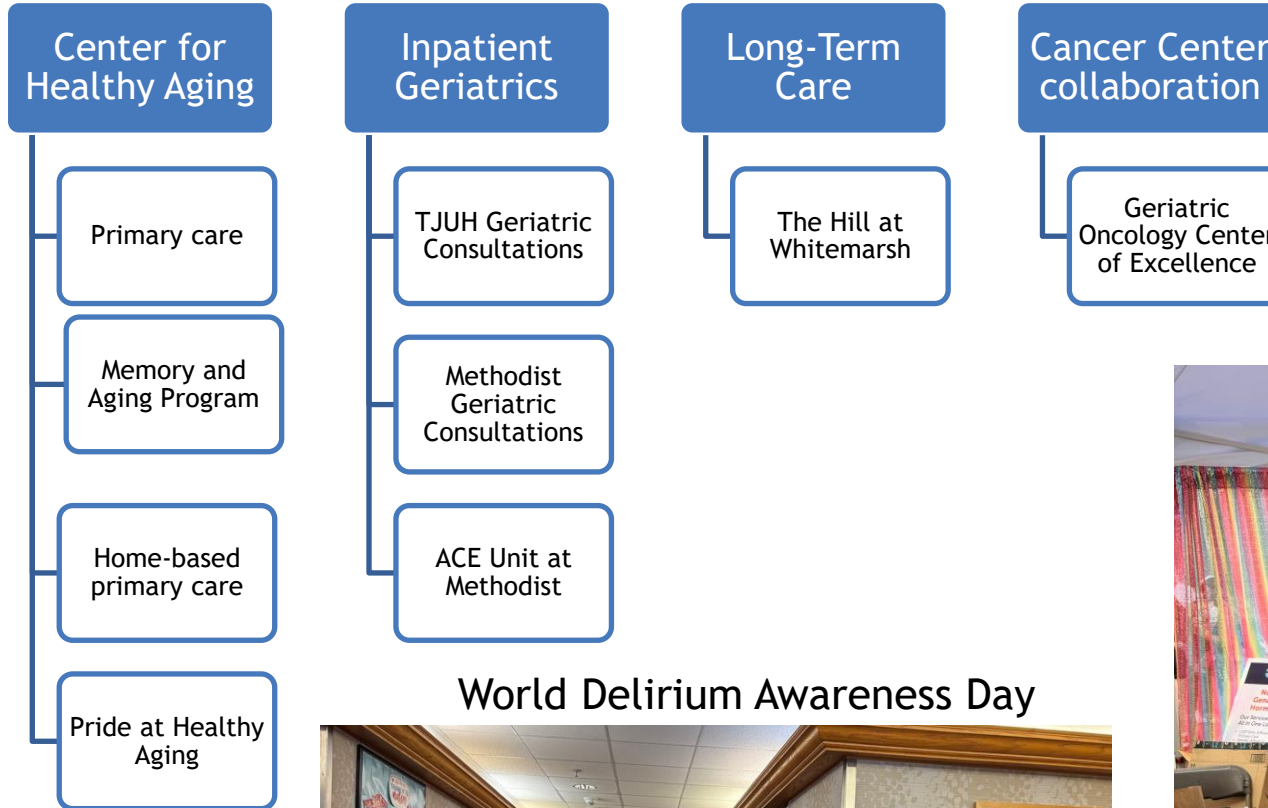
- Interprofessional team: MD, APC, RN, MA, PharmD, BHC; now adding a social worker
- Welcome to **Sarah Borgia**, Associate Administrator for Geriatrics and Palliative Care
- New structures and processes in place to ensure interprofessional team review
- Growth from 1,849 to 2,372 empaneled geriatric primary care patients
- Growth in inpatient consultations from 774 to 1,074 unique patients
- Doubling size of APC-led home-based primary care practice
- Establishment of **Endowed Lectureship** for Pride Care, thanks to the **Michael Palm Foundation**



Clinical services across settings



- The Hill at Whitemarsh
- Assisted living
 - Post-acute and long-term care
 - Memory Unit



World Delirium Awareness Day



Pride Care @ CHA

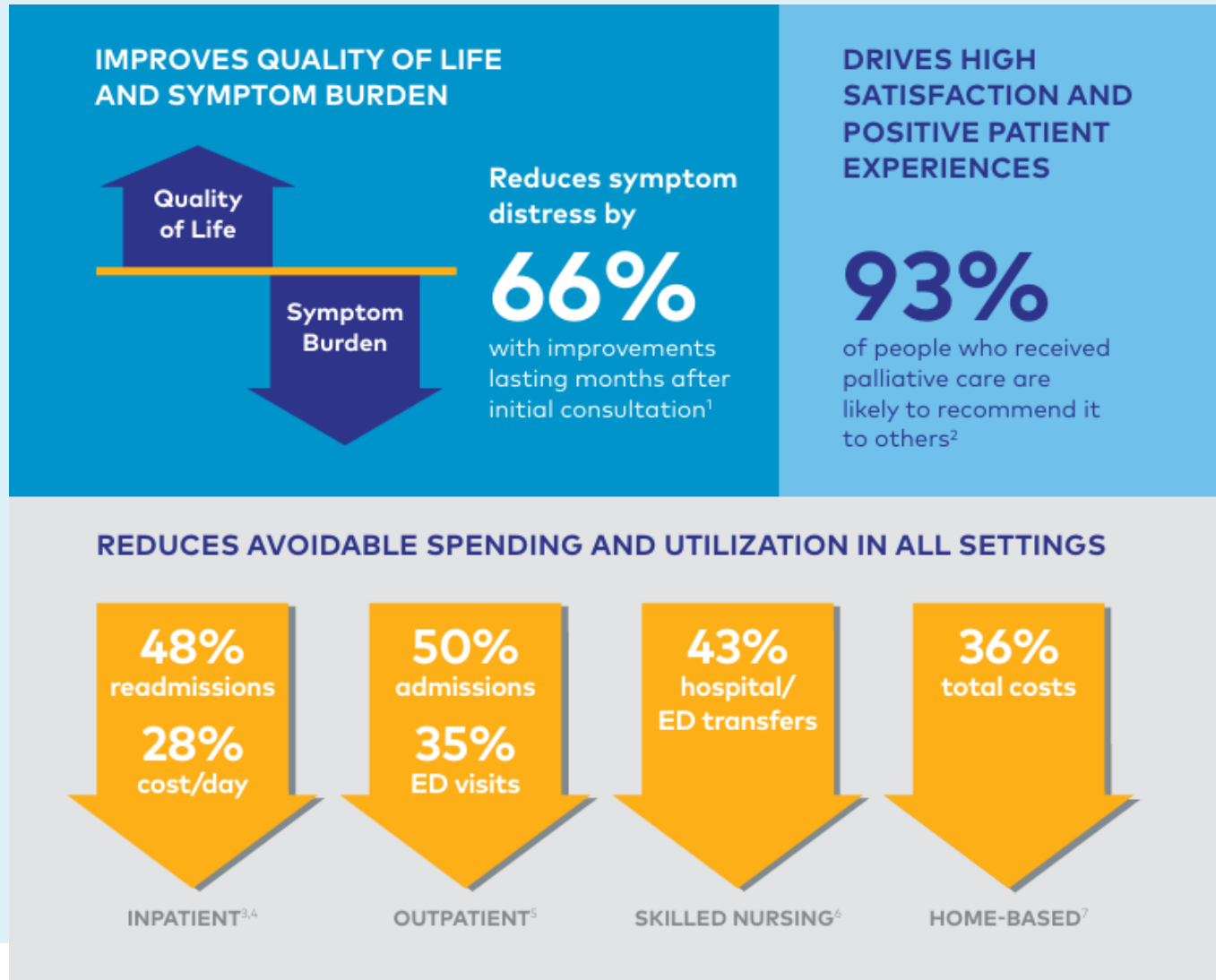
Palliative Care

Growing clinical services in the hospital and the community

- ~1700 hospital consultations per year
- Ambulatory palliative care now strengthened through targeted partnerships:
 - Interstitial lung disease
 - Advanced heart failure
- Coming in FY26:
 - Community-Based Palliative Care program
 - Interprofessional model with RNs, MD, and SW



- Palliative care improves quality and supports value-based care

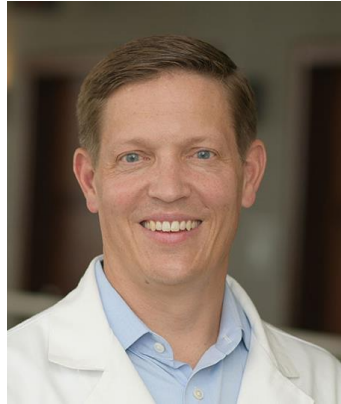


Financial value:

1. Reduced total cost of care in value-based contracts
2. Improved quality and experience metrics
3. Avoidance of CMS readmissions penalties
4. Lower in-hospital costs per admission
5. Improved Jefferson Health Plan performance

Division of Sports & Exercise Medicine

Sports and Exercise Medicine



- Completing our team with new faculty:
 - Dr. Skiba as fellowship director and leading development of research program
 - Dr. Gorbonosov as associate fellowship director and Head Team Physician at Jeff U
- Growth through partnerships:
 - Orthopedic surgery, PM&R, Neurosurgery, PT/OT, and athletic training
 - Employee health and Jefferson Health Plan

Sports and Exercise Medicine - Clinical + Community

Athletic Health Organization

provides on-site sports physicals at schools, under Dr. Jeremy Close's leadership

Sports partnerships

Phillies, Philadelphia Ballet, Jefferson, Villanova, St. Joe's, Drexel University, Penn Relays, USA Track and Field

Training programs

FM residents, PM&R residents, IM residents, EM residents, medical students, athletic training students, and visiting residents from around the nation



A photograph of a classroom or lecture hall where several medical students are seated at round tables. They are engaged in conversation and looking towards the camera. The room has wood-paneled walls and a chalkboard in the background.

Medical Student Education



268 completed Family Medicine clerkship

146 fourth year students who took a course/elective in our department

8 summer research program students

JeffMD Faculty

- 5 clinical skills small group leaders
- 2 skill observation and reflection group leaders
- 7 Scholarly Inquiry project mentors
- 5 case-based learning facilitators

From SKMC to Family Medicine

- 18 students in the FM pathway, class of 2025
 - **Successful Match Day March 21, 2025!**
- 25 students in the FM pathway, class of 2026
- Family Medicine Interest Group (FMIG)
 - Advisor: Dr. Barb Cymring
 - Hosted Annual Meet Family Medicine event
 - Developed new curriculum of procedure workshops
 - Mentorship Program underway



SKMC Annual Specialty Career Fair



From a student who attended:

“Thank you for doing such an amazing job at the Specialty Fair yesterday! I stopped in the Family Medicine room and it was awesome.

It was by far the most fun room - I learned a lot and got some free stickers!”

SKMC Raft Debate winner: Dr. Barbara Cymring

Raft Debate

"A boat crashes and everyone boards a raft. In the raft, you have room for one more person. Among the remaining, however, stands a group of physicians. They each quickly prepare to explain why they are the most qualified and deserving of that last spot on the raft."



Procedure workshops: IUDs and Joint Injections



Physician Area Shortage Program (PSAP) builds the future of rural medicine

- PSAP 2025 = **5 new doctors** for rural America
- **14 students accepted** for the coming Class of 2029
- 6 students presented at 2024 FMEC Annual Meeting with 2 receiving poster awards based on Summer Assistantship projects
- 2 students (Lexi Zazvrskey, Nick DeMario) received Outstanding Presentation Awards for their SI projects
- NEJM Letter to the Editor regarding “Challenges to the future of a robust [rural] physician workforce” accepted
- **Lehigh Valley will be new clinical site next year at Schuylkill practice**



Thank you Dr. Motley for your years of dedicated leadership!
Congratulations to Dr. Love on becoming Director of PSAP.

JeffBEACON builds the future of community medicine



- Director: Dr. Deb Witt
- **36** students in JeffBEACON
- Kevin Carolina (MS3) accepted into the Golden Humanism Honor Society Chapter at SKMC
- Brittany Chavez (MS4) matched at TJUH for Family Medicine



DFCM Education Retreat

01

Enhancing
primary care
pathways for
recruitment

02

Strengthening
support for
scholarly work
and publishing

03

Working with the
TJUH residency
learning
collaborative

04

Developing
medical
education
fellowship

05

Enhancing
faculty
development
engagement and
delivery



Residency Education



JEFFERSON FAMILY MEDICINE



2025-2026 Matched Intern Residents

Department of Family and Community Medicine Thomas Jefferson University

Intern Class of 2025 - 2026



Sambina Anthony
SKMC at Thomas Jefferson
University



Brittany Chavez
SKMC at Thomas Jefferson
University



Jane Hatzell
Cooper Medical School of
Rowan University



Brian Levine
Perelman School of Medicine
at the University of
Pennsylvania



Elana Liebow-Fesser
John Hopkins University
School of Medicine



Anh Nguyen
SKMC at Thomas Jefferson
University



Janelle Ozorowski
Drexel University College of
Medicine



Mirelle Rojano
Lewis Katz School of
Medicine at Temple
University



Miriam Solowey
SKMC at Thomas Jefferson
University



Isabelle Williams
Virginia Commonwealth
University School of Medicine

Chief Residents

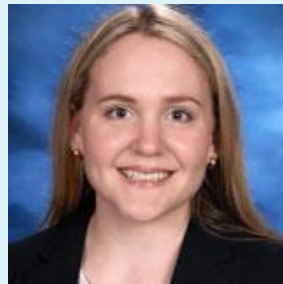
- **THANK YOU** to our retiring Chief Residents:

Dr. Eugenie Hughes & Dr. Brittany Macdonald



- **CONGRATS** to our new Chief Residents:

Dr. Elizabeth Franko & Dr. Adetutu Olowu



Areas of concentration and electives

AOC

Integrative Medicine (IM)

Prenatal and Newborn Care (SKWC)

Disability Medicine

Public Health and Health Policy

Immigrant Health at Puentes de Salud

Palliative

Community Health and Underserved Medicine

MSK/Sports

Medical Education

Women's Health

Substance Use/OD

Childhood and Adolescent Medicine DIY Track

Transitions of Care

Reproductive Health and Justice

Geriatrics



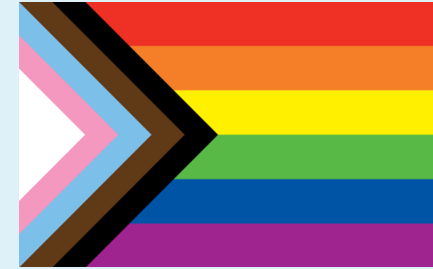
- Dr. Jade Enright & Dr. Adetutu Olowu successfully completed the Spanish Immersion elective in Colombia (HRSA Grant)
- Dr. Maia Mandel completed our 4-week elective in Italy (ERASMUS)
- New Electives:
 - Correctional Medicine
 - Gaudenzia Elective (Addiction & Behavioral Health)
 - Philadelphia Department of Health Center

Two New Fellowships

Jefferson Fellowship in LGBTQIA+ Health

Philadelphia's first LGBTQIA+ physician training program

- *Collaboration between TJUH and Jefferson New Jersey*
- Additional Enterprise-Wide Clinical educational sessions:
 - HIV primary care with FM, IM, ID clinicians
 - Affirming subspecialists, behavioral health and allied health professions



Jefferson Faculty Development Fellowship

- *Dedicated time in UME and GME opportunities, mentoring with faculty*
- *Creation of a longitudinal academic project*

Jefferson Family Medicine Program Director Collaborative

- Expanded in 2024 to 8 programs
 1. Einstein Philadelphia
 2. Einstein Montgomery
 3. Jefferson Abington
 4. Jefferson TJUH
 5. Jefferson New Jersey
 6. Jefferson Northeast
 7. Lehigh Valley
 8. Lehigh Valley - Schuylkill
- ERASMUS grant (year 2/3) - Dr. Maia Mandel as exchange resident
- ABFM Foundation Family Medicine Residency Learning Network Seed Grant for HIV Primary Care Education - (Miller/ Altshuler)
- New focus on quality improvement curriculum



Research productivity and learner engagement

- Of 49 publications, 14 (29%) had a trainee co-author (student, resident, fellow)
- Of 74 presentations at 29 conferences, 42 (57%) had a trainee co-author



Jefferson Center for Interprofessional Practice and Education (JCIPE)

JCIPE Update

- JCIPE is a national leader in interprofessional education
- JCIPE provides IPE programs across **8 colleges** and **4 campuses** at TJU, including **21 different health professions**

THE IMPACT OF JCIPE 2024

Professional Representation

22 Clinical Sites 

20 Learner Professions 

20 Facilitator Professions 

8 Colleges  **4** Campuses

Student Programming

2,378 **485** **382**

Learners

Hours

Sessions

127

16

1

Faculty Facilitators

Programs

Course for Credit



Major JCIPE Programs

- **Health Mentors Program**

- 1,534 students per year from 11 health professions
- Partners student teams with 230 community volunteers with chronic illness



- **Team SAFE: Simulation and Fearlessness Education**

- Intro: 1,101 students per year from 12 health professions
- Adv: 600 students per year from 4 health professions
- Teamwork and communication skills



Other JCIPE Programs

- Jefferson Student Interprofessional Complex Care Collaborative (J-SICCC)
- Interprofessional Palliative Care Program
- Team Care Planning
- Alzheimer's Virtual Interprofessional Training Program
- Project ECHO
- Community Voices
- PIVOT: People experiencing homelessness Interprofessional Virtual Outreach Training
- Team MICRO: Microaggression Interventions for CollaboRative Outcomes
- Anti-Racism in Health Curriculum

Shout out!

Lauren LaTourette, LCSW,
APHSW-C
Co-Director of the
Interprofessional Palliative
Care Program



Coming events!

Upcoming Speaker for SJIHE Lecture Series:
“Staying on Mission: Advancing Health for All People”




**Jennifer Edgoose, MD, MPH
(she/her)**

Professor and Chair
Department of Family and
Community Medicine
University of New Mexico

**Wednesday, May 28, 2025
8:00AM - 9:15AM
SAVE THE DATE!!!**

Investiture of Dr.
Lara Weinstein -
May 13

Save the Date!

 **Jefferson**
HOME OF SIDNEY KIMMEL MEDICAL COLLEGE

Event Information

Register Now

THE INVESTITURE OF
Lara Carson Weinstein, MD, MPH, DrPH
as the
Stephen and Sandra Sheller
Distinguished Professor of Supportive Healthcare

Please join us
for the
Investiture of Lara Carson Weinstein, MD, MPH, DrPH
as the
Stephen and Sandra Sheller
Distinguished Professor of Supportive Healthcare

Tuesday, May 13, 2025
4–5 p.m. | Ceremony
5–6 p.m. | Reception
Jefferson Alumni Hall
Atrium
1020 Locust Street
Philadelphia, PA 19107

Register Now

[Already registered?](#)

Please RSVP by May 6.

Business Attire

Artwork in the Bridge Clinic: an image of abundance

