

'Big Walk for Little Feet' Stepping Out with 27th Annual Jefferson Hospital Philadelphia Distance Run September 19

Hugely successful in its first three years, the "Big Walk for Little Feet" is returning for a fourth year as a special feature of the 2004 Jefferson Hospital Philadelphia Distance Run – the 27th anniversary of the annual world-famed half-marathon run. This is the seventh straight year Jefferson Hospital will be the run's title sponsor.

The "Big Walk for Little Feet" is a fun way for all to take a giant step to help save babies' lives. The

three-mile walk will again raise funds to benefit Jefferson's Labor and Delivery suite and the Neonatal Intensive Care Unit (NICU), Transitional and Well-Baby Nurseries, explains Jefferson University Hospital President and CEO Thomas J. Lewis.

"The walk benefits all babies born at Jefferson," says Mr. Lewis. "Last year, the event raised \$50,000, mostly from individuals, especially parents involving their friends and families. We are

thrilled with that success, and equally thrilled to repeat the walk this year."

A Big Family Fun Walk

The "Big Walk for Little Feet" on Sunday, September 19, is a fun walk for the entire family – parents, children and friends. So much fun that families keep coming back year after year. See photos.

The "Big Walk" begins at 8 a.m. at 12th and Market Streets, just after the last half-marathon runner takes off for the Distance Run. It finishes at 16th and Benjamin Franklin Parkway, near the Distance Run finish line.

The Distance Run start time is also 8 a.m. and the starting line for the half-marathon runners is at 9th and Market streets.

Walkers and runners may register now online at either www.philadistancerun.org or www.JeffersonHospital.org/pdr

Your Walk fee includes a "Big Walk for Little Feet" t-shirt. To form a team of five or more members, call Phyllis Nangle in the hospital's Development Office at **215-955-9136**.

All walkers are encouraged to collect pledges to benefit all babies born at Jefferson. For information, call **1-800-JEFF-NOW** or go to www.JeffersonHospital.org/pdr

Last year's event drew nearly 10,000 entries for the half-marathon. Competition and awards will again be held for corporate and running clubs.

Continues on Page 4

New Radiology Facility Places Jefferson In Forefront of Molecular Imaging Field



Dr. Rao and Thomas J. Nasca, MD, Dean, Jefferson Medical College, with the two ultra-sophisticated scanners at the heart of Radiology's new state-of-the-art small animal molecular imaging facility.

A new imaging facility in the Department of Radiology promises to place Jefferson in the forefront of the burgeoning field of molecular imaging, Vijay Rao, MD, Professor and Chair of Radiology, has announced.

"This system is the first state-of-the-art animal molecular imaging equipment on campus," Dr. Rao says.

"It will provide our researchers with the equipment and support to enhance current investigations and lead the way for new discoveries. It is hoped that the improved research capabilities will allow the information obtained from the animal studies to be used in the diagnosis and clinical care of patients sooner than previously achievable."

The system consists of two ultra-sophisticated scanners – the Mosaic PET scanner from Philips Medical Systems and the MicroCAT II CT scanner from Imtek Inc. The two are designed to work together to provide accurate molecular and anatomical fused imaging.

Valuable and Essential Role

"PET-CT fusion imaging plays a valuable and essential role in the study of small animal models of disease. It is the only combined imaging modality that allows researchers to accurately investigate disease processes in vivo at the molecular level while also attaining detailed anatomical information in one fused image," Dr. Rao explains.

With the system, Jefferson researchers can noninvasively image animal models of malignant and benign tumors, neurological diseases, cardiac disorders, and other frequently occurring medical conditions. "These studies will lead to a better understanding of disease progression and response to therapy," Dr. Rao says.

"The lab is supported by expert faculty who are dedicated to providing scientific and technical assistance for imaging experiments, as well as enhancing the capabilities of these technologies to obtain information that will address the research questions of Jefferson investigators."

The new imaging system is currently housed in newly renovated 1018 Bluemle Life Sciences Building and is available to investigators at Jefferson and other institutions.

For more information, contact Dr. Rao at **215-955-7264** or Vijay.Rao@jefferson.edu



Carol and Kevin Koerner of Mount Laurel, NJ, have participated in the Big Walk "from the beginning." Hannah, now 3, perches on mom's shoulders during last year's walk and her brother Jake, now 5, rides on dad's.

U.S. News & World Report Ranks Jefferson Hospital Among Nation's Best for the 15th Year in a Row

In its annual "Best Hospitals" national rankings, *U.S. News & World Report* has ranked Thomas Jefferson University Hospital as among the best hospitals in the nation for nine patient care categories. The hospital again achieved top ranking in Philadelphia for orthopedics and rehabilitation medicine.

U.S. News & World Report determined that Jefferson University Hospital was among the best in the nation in digestive

disorders, geriatrics, gynecology, heart and heart surgery, neurology/neurosurgery, orthopedics, otolaryngology-head and neck surgery, rehabilitation medicine and urology.

In addition, Wills Eye Hospital, which serves as the Department of Ophthalmology for Thomas Jefferson University Hospital and Jefferson Medical College of Thomas Jefferson University, again ranked tops in Philadelphia for ophthalmology, and third

in the nation.

This is the 15th year in a row that the hospital has received such top rankings. Jefferson Hospital President and CEO Thomas J. Lewis said the hospital and its staff are very proud of this recognition.

"We strive to provide the best care and treatment possible for our patients and it's gratifying to know that *U.S. News & World Report* continues to recognize that year after year," Mr. Lewis said.

It's Almost Time for the 2004 Employee Service Recognition Program

The Employee Service Recognition Program is a significant part of the continuing acknowledgement of the accomplishments and commitment of Jefferson employees. This year's Program will be highlighted by a special celebration to honor employees who celebrated five-year (5, 10,

15, etc.) anniversaries in the year ending June 30, 2004. The annual Service Recognition Celebration will be held on Wednesday, October 13, from 4:30 to 7:30 p.m., at the "Ballroom at the Ben" in the Benjamin Franklin Hotel. The event will include a reception, entertainment and gifts.

Watch for further details in the September issue of *JeffNEWS*. Honorees will receive invitations within the next month. For more information, call Randy McLaughlin in Human Resources at **215-503-8373**.

VITAL SIGNS: JUNE 2004

TJUH, Methodist, Geriatric Psychiatry, Jefferson Hospital for Neuroscience

	Budget	Actual	Prior Year
Admissions	3,329	3,542	3,309
Length of Stay	6.19	6.20	6.27
Patient Days	20,619	21,597	20,968
TJUH, Methodist Outpatient Visits	37,639	39,186	38,005
Patient Satisfaction Overall Mean Score (Apr-June)	82.3		

JMC Team Studying Work Hours of Third-Year Medical Students

With much attention and discussion devoted recently to the issue of long work hours for medical residents, the Accreditation Council for Graduate Medical Education (ACGME) has now set 80 hours as the maximum residents may work each week.

Now, a team of Jefferson Medical College (JMC) physicians and administrators is studying the same issue as it impacts the work schedules of third-year medical students. The third year is when most medical students devote time in "rotations," with much of that time spent working at various affiliate hospitals to receive hands-on clinical training.

The JMC team performed a study assessing the topic, presenting their findings to the national meeting of the Association for Surgical Education (ASE) in Houston.

Co-authors of the study – entitled "Medical Student 'Work' Hours: Is It an Issue?" – are Philip Wolfson, MD, Director of Undergraduate Education, Department of Surgery; John Caruso, MD, Medical Education Director, Department of Medicine; Sherry Weitz, Coordinator for Undergraduate Education, Department of Surgery; and Jon Veloski, MS, Director, Medical Education Research.

Says Dr. Wolfson: "The purpose of our study was to determine the attitudes of surgical faculty about student 'work' hours during surgical clerkships, assess how much time students actually spend in the hospital, and compare the opinions of faculty with those of students."

Questionnaires sent to ASE member faculty yielded 251 responses. In addition, a questionnaire to JMC students drew 160 responses.

Dr. Wolfson summarized conclusions:

"A slight majority of faculty and a large majority of students support setting limits on student clerkship hours, with faculty from Canada being as much in favor as are the students. Although our own students enter the Surgery clerkship with realistic expectations that they will commit 80 hours per week, they recommend that the clerkship be limited to 70 hours. Comments evidenced very wide ranges of opinion."



At the Jefferson Museum of Urology Dedication, from left, Frank L. D'Elia, MD, Clinical Assistant Professor of Urology, President of Pennsylvania Prostate Center; Dr. Gomella; Dr. Frank; Dolores Shupp-Byrne, PhD, Research Assistant Professor of Urology; and S. Grant Mulholland, MD, Professor of Urology, Chairman Emeritus.

Leonard A. Frank, MD, Jefferson Museum of Urology Dedicated

The first formal event of the Jefferson Urology Centennial (1904-2004) was the dedication of The Leonard A. Frank, MD, Jefferson Museum of Urology.

Leonard G. Gomella, MD, Urology Chair and Master of Ceremony, expressed deep gratitude for Dr. Frank's numerous contributions, primarily his genuine interest in formative urological studies for Jefferson medical students. Dr. Frank is a Clinical Assistant Professor of Urology and alumnus of the hospital's Urology Residency Program.

The museum features displayed archival urological cystoscopes, resectoscopes, endoscopes, urethral dilators, technical manuals and anatomical specimens. Also exhibited is a pictorial history of the department.

The Department of Urology is most grateful to the generosity of The Pennsylvania Prostate Center, who sponsored this memorable event attended by Dr. Frank's family and 75 other guests.

You can visit the Urology Museum on the 11th floor of the College Building.

Help! Blood Supply Running Dangerously Low

The Blood Donor Center has issued an urgent call for blood donors:

"Please help us out during this critical blood shortage crisis and give blood. We have a region-wide

diminishing supply of blood and your help is urgently needed."

Please call **215-955-7791** for an appointment. Regular hours are 8:30 a.m. to 3:30 p.m. Monday through Friday. Ask about special

early and late dates.

Jefferson employees receive three hours off each time they give blood, plus a t-shirt. If you schedule on a Monday you also receive an Atrium meal ticket.

Family Medicine Residency Holds 30th Year Reunion

Jefferson's highly respected Family Medicine Residency Program celebrated its 30th-year reunion in the spring.

A series of events spanning three days, the festivities drew almost half of the 200 former and Family Medicine residents. Former residents from all 27 graduating classes attended, in addition to the three current classes of residents. Resident alumni came from 14 states.

The event also served to celebrate Dr. Paul Brucker's tenure as President of Thomas Jefferson University. Dr. Brucker was Founding Chair of Jefferson's

Department of Family Medicine, and began the Department's residency program in 1974. He served as Chair of Family Medicine for the first 16 years of the program.

Dr. Brucker was honored for his role in establishing the Department, the residency, the student clerkship and the preceptorship.

Richard C. Wender, MD, Alumni Chair and Professor of Family Medicine announced the establishment of The Paul Brucker Award for Clinical Excellence to be presented annually to the graduating third-year Family



Dr. and Mrs. Paul C. Brucker

Medicine resident who "most embodies the commitment to clinical excellence and outstanding patient care represented by Dr. Paul Brucker."

AAMC Grant Enables JeffHOPE To Open New Shelter for Homeless Men

Jefferson Medical College (JMC) is one of eight medical schools in the United States to receive a grant from the Association of American Medical Colleges (AAMC), for the development of student-initiated community service programs.

The grant to JMC was awarded to JeffHOPE, the organization founded more than a decade ago by Jefferson medical students who recognized the need for better access to health care in the local homeless community. JeffHOPE

currently operates medical clinics at five sites in the Philadelphia area and has served more than 20,000 individuals since 1993. This grant will allow the program to open a new clinic at Eliza Shirley House, an emergency shelter at 1309 Arch St. for women and their families, managed by the Salvation Army.

The grants are part of AAMC's "Caring for Community" program which provides funding for service projects initiated, developed, and

administered by medical students in collaboration with existing community agencies or in conjunction with medical school outreach activities. The program encourages students to identify unique or unexplored avenues of community service.

The program is administered in collaboration with the Pfizer Medical Humanities Initiative, which has provided more than \$600,000 in funding since the program began in 2000.

C. R. Bard, Inc. Urology Fellowship Honors Demetrius Bagley, MD

C. R. Bard, Inc., a leading multinational developer, manufacturer and marketer of innovative, life-enhancing medical technologies, has awarded a three-year fellowship of \$250,000 to the Department of Urology of Jefferson Medical College (JMC) in honor of Demetrius H. Bagley, MD, the Nathan Lewis Hatfield Professor of Urology and Professor of Radiology at JMC. The C. R. Bard Fellowship in Endourology and Laparoscopy recognizes Dr. Bagley's longstanding relationship with the company, where he has been involved in developing specialized instrumentation for the urological division located in Covington, GA.

Dr. Bagley is an internationally recognized expert in endourology. His clinical interests include the treatment of urinary calculi, tumors of the ureter and kidney, and difficult endoscopic problems.

Says Dr. Bagley, "This fellowship

gives our department the opportunity to offer a year's training in endourology and laparoscopy to three different physicians, as well as providing time for them to engage in research and clinical practice.

We are very interested in advancing our knowledge in diagnosing and treating calculi, obstructions, and tumors of the upper urinary tract through minimally invasive procedures." Pankaj Kalra, MD, has been appointed as the Bard Fellow for this year.

C. R. Bard, Inc. introduced the Foley catheter, one of the most



Deborah L. Prime, Senior Marketing Manager, Bard Urological Division, C. R. Bard, Inc., presents a check to Demetrius H. Bagley, MD, FACS, Professor of Urology and Radiology, Department of Urology, for a fellowship in his honor. Glenn Murray, Regional Vice President, C. R. Bard, Inc., at left, and P. Kenneth Brownstein, MD, FACS, Clinical Assistant Professor of Urology, Department of Urology, helped celebrate the occasion at a dinner at the Omni Hotel in Philadelphia.

widely used products in urology, more than 70 years ago. The company is the worldwide market leader in urological diagnostic and interventional products.

Jefferson Hospital's JeffSTAT Takes to the Air

Thomas Jefferson University Hospital and JeffSTAT, Jefferson's ground medical transportation service, announced it will begin to provide air medical transport services in August. The medically equipped helicopter and transport team will service all hospitals in the Delaware Valley, including members of the Jefferson Health System.

Adding the helicopter means JeffSTAT will be the only all-inclusive provider of ground and air medical transportation service in the Philadelphia Region.

Based at the Sterling Aviation Heliport on Columbus Boulevard on the Delaware River, the helicopter will be available 24 hours a day for both inter-hospital transports and scene trauma transports. JeffSTAT will operate the single pilot, twin-engine, instrument-equipped helicopter capable of speeds up to 150 mph.

Expediting Emergency Care

Brian Sweeney, Director of JeffSTAT, says, "Jefferson is pleased to be able to provide helicopter transport services to our physicians. This new resource will help expedite care to patients with serious illnesses or injuries. The

addition of a helicopter to JeffSTAT's fleet of vehicles will reduce our dependence on other helicopter services that were not always available immediately when we needed them. Response times will improve significantly."

While most helicopter services are grounded during adverse weather conditions, JeffSTAT will still be able to safely provide transportation services via ground ambulance, explains Mr. Sweeney.

"Providing both ground and air transport services also makes it easier for hospitals and physicians to coordinate services. They will no longer need to call one company for a ground ambulance and a different company for a helicopter," Mr. Sweeney adds.

JeffSTAT has entered into a partnership with Air Methods, the largest provider of medical helicopter services in the world. Air Methods will manage the aviation aspects of the program, including helicopter maintenance, the pilots and mechanics, communications and aviation operations. Jefferson will provide the medical crew, consisting of critical care transport nurses and paramedics, medical direction for the program, training and



Ready for Liftoff - JeffSTAT will begin air medical transport services in August with the arrival of a medically equipped helicopter. Anticipating the new service, four JeffSTAT staff members pose atop Jefferson's helipad. In front, from left, Joy Schank, Paramedic, and Joseph Evans, RN. In rear, from left, Dave Tercha, RN, and Vince Blue, RN. The helicopter will carry a crew of three: pilot, paramedic and nurse.

operational oversight.

JeffSTAT's services can be requested 24 hours a day through its dispatch center at **1-800-JEFF121**.

JHS Hospitals Participating in Premier Hospital Quality Incentive Project

All member hospitals of the Jefferson Health System are participating in a new Centers for Medicare and Medicaid Services (CMS) demonstration project designed to examine – for the first time – the impact of financial incentives on quality of care.

The three-year project, called the Hospital Quality Incentive Demonstration Project, is facilitated by Premier, Inc., and involves 278 hospitals throughout the nation.

Participating hospitals have the potential to receive lump sum bonus reimbursement from CMS each year based on their performance compared to other hospitals in Premier's Perspective Online™ quality measurement system.

Hospitals that perform in the top 10 percent of a clinical area will receive a 2 percent increase in Medicare reimbursement for that area.

Hospitals that perform in the top 20 percent of a clinical area will receive a 1 percent increase in Medicare reimbursement for that area.

"With increasing costs impacting hospitals, these attractive incentives are anticipated to stimulate improved performance and quality of care," says Jonathan Gottlieb, MD, Jefferson Hospital's Senior Vice President and Chief Medical Officer.

Conversely, a hospital failing to perform beyond a minimum threshold established in the project's first year will experience a 1 to 2 percent decrease in reimbursement.

Clinical focus areas include acute myocardial infarction (AMI), coronary artery bypass graft (CABG), community acquired pneumonia (CAP), congestive heart failure (CHF), and hip and knee replacement (Medicare patients only).

Staff from Performance Improvement and Financial Administration attended a training session in the spring to learn how to use Premier's quality measurement system to generate comparative reports for Jefferson Hospital related to the demonstration project.

To learn more, visit www.qualitydemo.com or www.cms.hhs.gov

'We Met Here, So Why Not Marry Here'

Both long-term employees, Bob Pawloski and Sue Galante met on the job. They dated, fell in love, and decided to marry.

Bob's an Orthopaedic Technician and Supervisor in the cast room and Sue's a Clerical Nursing Assistant in the Neurointensive Care unit.

With 30 years of service to Jefferson between them, what better place to be married than at Jefferson?

That's what they thought, and that's what they did as about 35 co-workers, friends and family members squeezed into the tiny chapel on the ninth floor of Gibbon on June 25, including 4-year-old Kenny, Sue's son from a previous marriage, who was Bob's best man and ring bearer.

"We couldn't think of a better idea than to be married here at Jefferson," they both reasoned.

The Rev. Sherry Cianciola, of Journeys of the Heart, performed the interdenominational ceremony.

According to informal polls and an official query to the Department of Pastoral Care, this was probably a first – first time two hospital employees were married in the hospital chapel. Two years ago, two university researchers were married there.



Jefferson Scientists Find How HIV Causes Dementia

Ever since the AIDS epidemic began more than two decades ago, scientists have been trying to understand why as many as one-quarter of those infected with HIV develop dementia.

Now, researchers at Jefferson Medical College (JMC) may have an answer.

Investigators led by virologist Roger J. Pomerantz, MD, Director of the Division of Infectious Diseases and Environmental Medicine at JMC, have shown that

the HIV virus produces proteins that turn on specific biochemical pathways in the brain, leading to brain cell death.

"Neurons die," Dr. Pomerantz says, "and the brain atrophies. It's extremely unusual. Infectious agents such as those causing meningitis or herpes infection don't do this, but HIV does."

Dr. Pomerantz and his colleagues reported their results in the *Proceedings of the National Academy of Sciences*.

"We feel that it's mainly the virus and viral proteins causing the neuronal cell death, and now we may know the precise pathways involved," Dr. Pomerantz says.

"Now we can rationally design drugs that could protect brain cells from the effects of the HIV virus."

Dr. Pomerantz is also Professor of Medicine, Biochemistry and Molecular Pharmacology and Director of the Center for Human Virology and Biodefense, JMC.

Caring for the Country... New Book by Howard K. Rabinowitz, MD

For more than a quarter century, Jefferson's Physician Shortage Area Program (PSAP) has been one of the most successful programs in the country in increasing the supply and retention of rural physicians.

Now, Howard K. Rabinowitz, MD, Professor of Family Medicine, Jefferson Medical College (JMC), and PSAP Director, has published a book about the PSAP, supported by a grant from the Robert Wood Johnson Foundation.

The book, "Caring for the Country: Family Doctors in Small Rural Towns," tells the story of the PSAP through the professional and personal lives of 10 of its graduates.

Each of these Jefferson alumni has achieved his or her own personal dream of becoming a family doctor in a small rural town, at the same time meeting a real need to provide access to health care in their rural community. Taken together, their profiles – obtained through audiotaped personal interviews, and shadowing these physicians as they saw more than 100 patients in their offices and hospitals – provide a realistic picture of what rural family practice is like at the beginning of the 21st century.

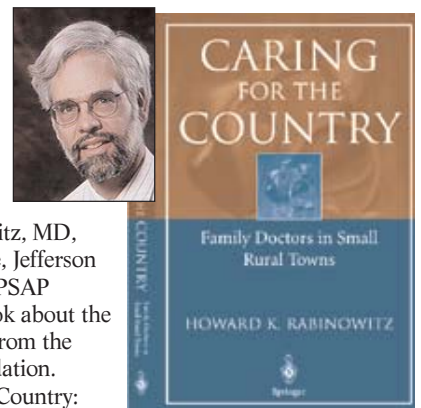
Poignant Stories, Candid Dialogue

Through poignant stories and candid dialogue, the profiles cover the spectrum of social and professional issues that rural family doctors face, such as the scope of rural family practice, the roles of medical schools and hospital systems, healthcare policy, rural obstetrics and telemedicine.

The book ends with the news that Vince Proy, JMC '07, has been admitted to Jefferson's PSAP. Vince is the son of Bernie Proy, JMC '80, one of the 10 physicians profiled, and is the first child of a PSAP graduate to also be in the PSAP.

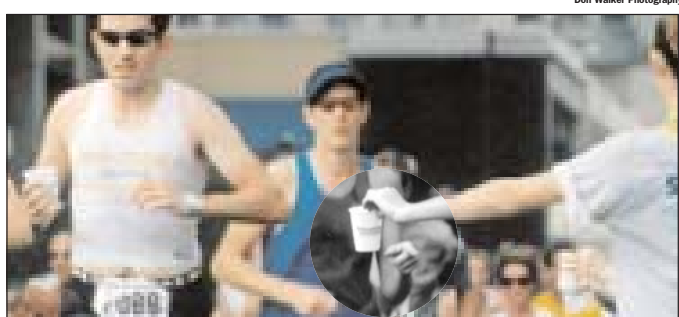
Purchase Book at Jefferson Bookstore

You can purchase "Caring for the Country" at the Jefferson Bookstore, at its new location at 1009 Chestnut St., or order online at www.jefferson.edu/bookstore To learn more, call **215-955-7922**.



Jefferson Distance Run *continued from page 1*

In addition to this year's half-marathon, the Philadelphia Festival of Races will hold the 12th annual Philadelphia Children's Run on Saturday, September 18, and the 5K Classic Run on Sunday, September 19.



Don Walker Photography

Volunteers Needed for Race, Walk

Jefferson Hospital sure would appreciate your help as a volunteer for the Race or the Walk. From Thursday, September 16, through Sunday, September 19, there are a host of volunteer opportunities for you and your family members. Other activities are also appropriate for children. And all are guaranteed to be fun!

The water station, shown in photo above, located near the three-mile mark of the race, provides the thrilling sight of thousands of runners rounding the turn to the station. And it gives volunteers an exciting hands-on opportunity to participate and feel rewarded as grateful runners reach for precious water while racing by. The water station needs 50 volunteers, making this the perfect opportunity for groups, including Jefferson departments, their families and children.

Please respond to our call for volunteers so that we can achieve our goal of 125 Jefferson volunteers to cover all these exciting activities.

To volunteer, call the Volunteer Office at **215-955-6222**.



Running in Jefferson's Distance Run To Say 'Thanks'

When Jesse Cheyney steps out to run for the first time in the Jefferson Hospital Philadelphia Distance Run, he will be keeping a promise to himself – as well as saying "Thanks."

He'll be expressing his thanks and gratitude to the caregivers at the Kimmel Cancer Center (KCC) at Jefferson who treated his colorectal cancer over the past five years and made his recovery possible. He had promised himself that when he reached the "five-year-out" milestone in his recovery, he would run in the 2004 Marine Corps Marathon in Washington, DC, October 31 and began training for it in the spring.

But since the 55-year-old industrial salesman had never run anywhere near 26 miles before, he decided a perfect step in his training would be to run in Jefferson's half-marathon Distance Run – 13 miles.

"It's also my small way of saying thanks to Jefferson. I wish I had the vocabulary to express my true feelings towards all who helped me so very much, and do it justice. How do you thank someone for saving your life and giving you a second chance?"

"Of all the great things at Jeff, I'll single out two activities that I gladly volunteer for – the 'Buddy Program,' which I am proud to be part of since it began in January 2000 – and the Patient Advocacy Committee."

"When I was diagnosed, I remember that I was given such advice as, 'stay positive,' 'surround yourself with upbeat, positive people,' 'set high goals,' and, 'never, ever, give up.' All of those things came pretty easy for me because of my close and loving family, friends, co-workers and the wonderful Jefferson medical team who cared for me."

"I look upon running the Distance Run and Marathon as reaching for more high goals. It is my hope and prayer that all who read this who are recently diagnosed with cancer and/or who are going through treatments that you will get a sense of strength and encouragement and that you know I will run with all of you in my thoughts and prayers."

Three Ways to Register for 2004 Big Walk

- Call the Special Events office at **215-955-9136**
- Log onto the Big Walk website and register immediately – www.jeffersonhospital.org/pdr and click on the Big Walk icon
- At Sign Up Desks for The Big Walk set up in the Atrium: **August 4**, 10th St. Atrium, 11 a.m. to 2 p.m. **August 18**, both 10th St. and 11th St. Atrium, 11 a.m. to 2 p.m.

Blood Donor Center hours are 8:30 a.m. to 4 p.m., Monday through Friday. Please call 5-7791 to schedule an appointment if you are eligible and willing to give blood.
Months:
August 1 - 31: Cataract Awareness; National Immunization Awareness, and Psoriasis Awareness month.

BROWN BAG LUNCHES

Lesbian and gay lunch group for staff, students and other members of the Jefferson community. The meetings will be held every third Wednesday of each month, noon to 1 p.m., 1508 Pavilion. Contact John at JeffGala@aol.com for more information.

CONFERENCES AND SEMINARS

Monday, August 2
Radiobiology, Kevin Camphausen, MD, Deputy Branch Chief, Radiation Oncology Branch, NCI/NIH, Bethesda, MD, "Combining Radiation and Molecular Targeting in Cancer Therapy," noon, G-312 Bodine.

Thursday, August 19
Home Infusion Service and The Philadelphia Area Society for Parenteral and Enteral Nutrition, ASPEN Audio Teleseminar, "Blood Glucose Management in the Nutrition Support Patient," 4 to 5:30 p.m., 101 BLSB. To register, call Sue Buccieri at 215-955-5200.

UPCOMING FORUM

Wednesday, September 8
Health Policy, Robert J. Laskowski, MD, President and CEO, ChristianaCare Health System, "Current Challenges of an Academic Community Health System," 8:30 to 9:30 a.m., 218 Curtis. Call 215-955-2822.

GRAND ROUNDS

Wednesday, August 4
Pediatrics, Rhonda Walter, MD, Developmental Pediatrician, duPont Hospital for Children, "Pediatric Feeding and Swallowing Disorders," 8 to 9 a.m., Lecture Hall, duPont Hospital for Children. (Video teleconference from duPont Hospital for Children to AtlanticCare and Christiana Care Health System.)

Wednesday, August 11
Pediatrics, to be announced, 8 to 9 a.m., Lecture Hall, duPont Hospital for Children. (Video teleconference from duPont Hospital for Children to AtlanticCare and Christiana Care Health System.)

Wednesday, August 18
Pediatrics, Patrice White MD, Professor of Medicine and Pediatrics at George Washington University School of Medicine and Health Sciences, Research Director of Adolescent Employment Readiness Center at Children's National Medical Center and Director of Master Teacher Program at Children's National Medical Center, Washington, DC, "Opening Doors to the Future: Transition Planning for Young People with Special Health Care Needs/Disabilities (SHCN/D)," 8 to 9 a.m., Lecture Hall, duPont Hospital for Children. (Video teleconference from duPont Hospital for Children to AtlanticCare and Christiana Care Health System.)

Kimmel Cancer Center at Jefferson, Stephen Schuster, MD, University of Penna., "Non-Hodgkins' Lymphomas: Diagnosis, Staging and Treatment," 8 a.m., G-312 Bodine.

Wednesday, August 25
Pediatrics, Joel Klein, MD, Clinical Associate Professor, JMC, Chief, Division of Infectious Diseases, duPont Hospital for Children, "Staph Stuph," 8 to 9 a.m., Lecture Hall, duPont Hospital for Children. (Video teleconference from duPont Hospital for Children.)

CLASSIFIED

JeffNEWS Classifieds – Free to Jeffersonians. Maximum 50 words. Thomas Jefferson University does not guarantee quality or condition of property advertised.

To place an ad to sell or rent property, complete a housing registration form available at the TJU Housing Office, 103 Orlowitz Hall or at the Communications Office, Suite 300, 211 S. 9th St.

For more information on any property listing, call 5-6479. Telephone numbers do not appear in JeffNEWS real estate ads.

August 1 Shore rental: N. Wildwood, 18th St., one block from boardwalk, Bayside: 2 bedrooms, 1 bath, 2nd floor, 2 single beds and queen sofa, available through Sept. 6; Oceanside: 2 bedrooms, 1 bath, 2 single beds, 1 full and queen sofa. Available through Sept. 6.

August 2 Shore rental: Rancher, Cape May, NJ, center of town, large, modern, 3 bedrooms, 2 baths, sleeps 8, close to beach, tennis, central air, many extras.

August 3 Vacation rental: Condominium, 258 Simpson, 2nd floor, Ocean City, NJ, 3 bedrooms, 2 baths. Call for pricing.

August 4 Vacation rental: Ocean City, NJ, 3 bedrooms, 2 baths, sleeps 8, newer construction, walking distance to beach, shopping and recreation. Weekly rentals available from \$800 to \$1,850.

To place an ad to buy or sell personal items, send written copy and a photocopy of your Jefferson ID to Ruth Stephens, 211 S. 9th Street, Suite 300. Please include your Jefferson extension and area code for home number. (Please do not abbreviate copy.)

For sale: 1993 Chevy Blazer 4 x 4 SUV, 143,000 miles, clean, good running condition, \$2,500 or best offer. Call Arleen at 215-242-5074 (evening).

Moving sale: Dining room set, bedroom set, Baldwin Piano, upright, walnut, 41" h x 56" l x 24" w. Call Sandy at 215-503-4701 (day) or 215-477-0144 (evening).

For sale: Black & white darkroom (complete) – Bessler manual enlarger and Omega enlarger, trays (all sizes), stainless steel reels and tanks, easels for printing, polycontrast filters, timer, light, lupe, focusing equipment, chemicals and bottles, and much more, \$500 or best offer; portfolios for displaying photos and original art, size 28" x 21" black leather with handle, \$15 each; Singer industrial table sewing machine (belt driven with motor),

\$250 or best offer. Call Arleen at 215-242-5074 (evening).

For sale: Bellini bedroom set, Italian made, pearl-washed, youth, twin headboard, Armoire with convertible shelving and three large drawers, hutch with shelving and three large drawers, very good condition, paid \$1,200, selling for \$600; electric scooter with charger, like new, blue, paid \$225, selling for \$75; floor lamp, burgundy, \$25; bike, young boy, 18" two-wheeler, very good condition, \$25. Call Elaine or Jim at 215-551-1115.

For sale: Secretary desk, excellent condition, whimsically painted, stately pediment, 3 bottom drawers with brass pulls, ample top and bottom storage, 34" wide, 18" deep (folding flap adds 13"), 76" high, \$600. Call Joseph at 215-627-0227 and leave a message.

For sale: Three commemorative china plates from "The King and I" featuring Yul Brynner with Edwin M. Knowles certification: 1984 "A Puzzlement," 1985 "Getting to Know You," 1985 "We Kiss in a Shadow," "Moulin Rouge" china plate, 1981, from Henri d'Arceau and Fils with documentation, "Tribute 2000" china plate designed by David Henderson from the "Millennium Around the World" collection, and 1997 Princess Diana "The People's Princess" china commemorative plate with certificate. All items negotiable. Call Ludwig at 215-612-0940.

For sale: Medical office/clinical furniture, excellent condition: exam tables, base sink, wall cabinets, waiting room furniture, desks, chairs, etc. Reasonable offers accepted. Possible delivery. Call Sy at 570-407-2716.

For sale: Excellent tires with many miles left on them, Michelin or Dunlop 205, 15" or 16" size from luxury cars, \$46 each; Duxiana best back support design mattress set, \$189 each, 50 gallon hot water heater, used 2 seasons, \$149; Sharp microwave oven with Pyrex turntable, \$89; kitchen counter top with double stainless steel sink and Delta One handle faucet and spray hose, \$149; woodworking tools, 10" Craftsman table saw, and other professional items. Call Theresa at 856-424-8255 or email Leo at Leo8255@Earthlink.net

For sale: Three-piece sectional sofa, Natuzzi brown leather, \$1,100; Tuntari exercise bicycle, \$125; Huffy men's bicycle, \$35 or best offer. Call Cathy at 215-280-8606.

Kimmel Cancer Center at Jefferson, Norman Rosenblum, MD, Gynecology Oncology, JMC, "Modern Management of Vulvar Carcinoma," 8 a.m., G-312 Bodine.

SPECIAL EVENTS

Wednesday, August 4
Activities Office, Infant/Child CPR Certification, \$50 Commons members, \$60 Jefferson employees, 5 to 8 p.m., 139 JAH. Pre-register in Activities Office, B100, JAH.

Thursday, August 19
Activities Office, Adult CPR and First Aid Certification, \$50 Commons members, \$60 Jefferson employees, 5 to 8 p.m., 139 JAH. Pre-register in Activities Office, B100, JAH.

UPCOMING SPECIAL EVENTS

Friday, September 17
2004 Jefferson Hospital Philadelphia Distance Run Health Expo, Philadelphia Marriott, 12th and Market Sts. Also on Sat., Sept. 18. For more information, call Jeffrey Baxt at 215-955-5507 or at jeffrey.baxt@jefferson.edu

Sunday, September 19
27th Annual Jefferson Hospital Philadelphia Distance Run, events include: 4th Annual "Big Walk for Little Feet," and the 8th Annual 5K Classic run. Walkers and runners may register by mail at Philadelphia Festival of Races, P.O. Box 43111, Philadelphia, PA 19129, or online at www.JeffersonHospital.org/PDR

RELIGIOUS SERVICES

Monday, August 2
The 2 Chronicles 7:14 prayer group, 6:30 to 6:55 a.m., 9490 Gibbon (behind the chapel). Also Mondays, August 9, 16, 23 and 30. For

information, call Paul at 609-680-7546.

Tuesday, August 3
Christian prayer meeting, praise, prayer and Bible reading, non-denominational, noon to 1 p.m., 219 Curtis. Also Tuesdays, August 10, 17, 24 and 31.

Wednesday, August 4
Hospital Christian Fellowship, brown bag, Bible study, 1 to 2 p.m., 302 MOB. Call Hyacinth Williams at 215-474-0864. Also Wednesdays, August 11, 18 and 25.

Thursday, August 5
Interfaith Prayer and Meditation Service, noon, Chapel, 9 Gibbon. Anyone from any faith is welcome. During brief service silent prayer is offered from requests written in books placed in the Chapel, Bodine Cancer Center and several other hospital areas. Also Thursdays, August 12, 19, and 26. Call Theresa at 215-955-4710 or FAX to 215-923-1835

See JeffNEWS in Color

www.Jefferson.edu/jeffnews

JeffNEWS

Paul C. Brucker, MD, President, TJU
Thomas J. Lewis, President and CEO, TJUH
STAFF: Carmichael J. Brown, Senior Vice President for Marketing, Public Relations and Communications
Patricia S. McMorro, Director of Communications and Managing Editor
Vincent T. Walsh, Editor
Ruth Stephens, Calendar Editor
James Stewart, Design: JeffGraphics

Article and photo ideas, contact: Vince.Walsh@jefferson.edu or 215-955-7708

Calendar and classified items, contact: Ruth.Stephens@jefferson.edu or 215-955-6204

Communications Department
Suite 300, 211 S. 9th St., FAX 215-923-1835

www.Jefferson.edu/jeffnews

Expressing a Heartfelt 'Thank You'

Roe Osowski, Manager of Practice Activities, Department of Anesthesiology, and her husband, Richard, express their sincere gratitude to the entire Jefferson community for the successful benefit for Seana and Matthew Osowski, two of their grandchildren stricken with cancer.

"We greatly appreciate the support received from our friends and co-workers. Many others have asked how they can help."

For more information, call **215-955-4038** or roe.osowski@jefferson.edu