

J E F F N E W S

vol.5 issue 1

2018

Creating Awareness of the New Jefferson: Redefining Humanly Possible

When Thomas Jefferson University and Philadelphia University combined on July 1, 2017, we became Philadelphia's fifth largest university and established a preeminent professional university focusing on excellence in architecture, business, design, engineering, fashion, health, humanities, medicine, science and textiles.

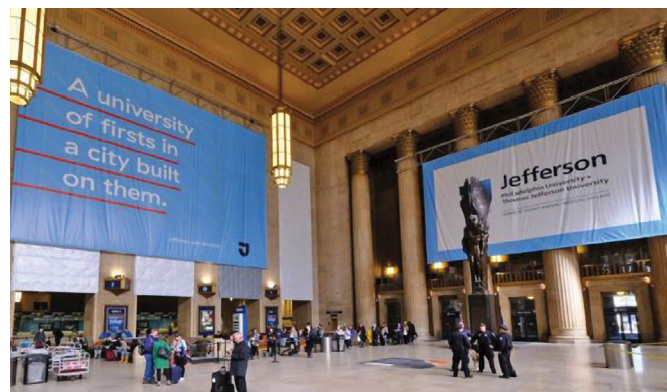


**The greatest human advances
are made through collaboration
and transdisciplinary education.
It is the driving force behind
our new brand.**

At Jefferson (Philadelphia University + Thomas Jefferson University), we believe the greatest human advances are made through collaboration and transdisciplinary learning. It is the driving force behind our new brand and its promise: to deliver a different approach to higher education that prepares students for success in today's — and in yet-to-be imagined — professions.

Our University's marketing and communications goals are to: increase awareness and understanding of the new Jefferson; create preference and build loyalty for our institution among key audiences; and deliver on our brand promise to students.

That promise is to:



- Set a new and visionary standard for professional education
- Provide our students with Nexus Learning: forward-thinking and hands-on education — by design



- Deliver a degree that has even greater value to students

Our inaugural brand campaign, launched earlier this year, conveys the value we deliver for our students. Marketing plans for the coming year also include a new combined University website.

TV spots have appeared on major networks (including programming such as the Winter Olympics), and online and print ads are appearing in major publications, Amtrak stations and more.

Spread the word about the new Jefferson and all that it offers — visit Jefferson.edu and share the web link.



More Than 500 Jefferson Physicians Named to Top Docs™ List

Jefferson Health is honored to have more than 500 of our physicians named to the annual Castle Connolly "Top Doctors" list. To see the complete list of our physicians who were recognized, visit JeffersonHealth.org/TopDocs. The May issue of *Philadelphia* magazine featured the annual list and also highlighted the stories of two of our physicians: Jerry McCauley, MD, Director of the Division of Nephrology at Thomas Jefferson University Hospitals, and Family Medicine resident Alexis Sweeney, MD.

In This Issue:

3 Industrial Design + Occupational Therapy = Accessibility Solutions

4 Patient Spotlight: Steve Thode is "Lucky to Be Alive"

7 Philadelphia Police Honor Jefferson Frankford Hospital

Asplundh Cancer Pavilion at Abington – Jefferson Health to Open in July

Abington – Jefferson Health and the Sidney Kimmel Cancer Center – Jefferson Health are proud to unveil a new 86,000-sq. ft. outpatient center. The Asplundh Cancer Pavilion, located at 3941 Commerce Avenue, Willow Grove, is conveniently located minutes from the Willow Grove turnpike exchange. When it opens in July, patients will have access to a comprehensive continuum of state-of-the-art outpatient cancer care, clinical trials and support services.

Right: The Asplundh Cancer Pavilion in Willow Grove was designed to use natural light and nature to promote healing and comfort for our patients. With an eye on being environmentally responsible, the complex is also LEED certified.



The Designer Greats of Tomorrow Dazzle at Fashion Show



Carson Kressley, known for hosting the Emmy award-winning television show “Queer Eye,” emceed at the sold-out Jefferson Fashion Show this spring, attended by more than 1,800 guests. Among them were fashion industry professionals from Women’s Wear Daily and other major industry publications. See more photos at [WordPress.Phila.edu/Today](https://www.wordpress.phila.edu/today).

Jefferson Forms Biologics Partnership with Ireland-Based NIBRT

Jefferson has partnered with Ireland-based National Institute for Bioprocessing Research and Training (NIBRT), the internationally recognized bioprocessing research and training powerhouse, to create the Jefferson Institute for Bioprocessing (JIB). JIB will be the first biologics manufacturing training center in North America and will work with pharmaceutical companies to provide workforce training through community college partnerships, and bioprocessing certifications through regional university partnerships.

Our partnership directly reflects our University’s education model — making sure students are prepared to lead in tomorrow’s world by creating opportunities to train them in biopharmaceutical processing as the demand for this expertise grows. Jefferson will be the only university with this capability and will be able to offer post-secondary degrees in bioprocessing engineering.

Expanding Patient Access to Clinical Trials and Accelerating New Treatments

Jefferson and five other regional institutions have announced the formation of a nonprofit clinical research consortium — Partners in Innovation, Education, and Research (PIER Consortium™) — a streamlined clinical trial system that will span New Jersey and Pennsylvania. PIER will provide patients with access to a larger pool of clinical trials, while also bringing new treatments to market faster. The founding members of PIER Consortium™ include Thomas Jefferson University and Hospitals, Atlantic Health System, Drexel University, Einstein Healthcare Network, Geisinger and Main Line Health.

Jefferson and Einstein Healthcare Network Sign Letter of Intent to Merge

To enhance our teaching and research missions and better serve patients in greater Philadelphia, Jefferson and the Einstein Healthcare Network have signed a Letter of Intent to merge. This begins the process of exclusive discussions to determine next steps for a possible merger of our two organizations.

Jefferson Health Receives Top Grades for Patient Safety

The Leapfrog Group has recognized Jefferson Health hospitals for their commitment to safety. The group’s bi-annual hospital ranking uses 30 measures of publicly available safety data to assign grades.

The following hospitals received an “A” ranking*:

- Abington - Lansdale Hospital
- Jefferson Stratford Hospital
- Jefferson Washington Township Hospital
- Methodist Hospital
- Thomas Jefferson University Hospital

The following hospitals received a “B” ranking:

- Abington Hospital
- Jefferson Bucks Hospital
- Jefferson Cherry Hill Hospital
- Jefferson Frankford Hospital
- Jefferson Torresdale Hospital

*Just 750 hospitals nationwide were awarded an “A” ranking.

Jefferson's Strategic Global Collaborations and Expertise Showcased at Vatican City Conference



As part of Jefferson's strategy to strengthen and broaden many of the international partnerships our faculty and students have, and to focus on areas of the world where we can have a significant impact, our staff members took an active role in the "Unite to Cure: A Global Health Care Initiative" in Vatican City this spring. Drs. David Nash, Richard Derman and Howard Krein presented on population health intelligence, global approaches to a world without disease, and "How a Global Army of Health Transformers Is Accomplishing One Impossible Dream." The conference, at which Pope Francis met with attendees and delivered an address, aimed to raise global awareness and create a forum for collaboration around the wide array of promising cell therapies, gene therapies and immunotherapies emerging from medical institutions around the world. The event also offered the opportunities to discuss ways to improve health outcomes and the impact new technology will have on humanity and society.

THINKING OUTSIDE THE BOX

Industrial Design + Occupational Therapy = Accessibility Solutions

In keeping with our mission to "Improve Lives," Jefferson's new program, *Designing for Accessibility*, taps into the imaginations of our Industrial Design (ID) and Occupational Therapy (OT) faculty and students to develop assistive devices to help others in need.

The program connects ID students with OT experts (including faculty and students) at our Center City campus, who provide feedback on the viability of students' concepts based on the clinicians' knowledge and experience with patients. One example of many collaborations is a microwave prototype designed for the elderly. It has a removable, washable insert; simplified controls; a display with large numbers; and a cook-time limit of six minutes (to prevent overcooking and fires).

Designing for Accessibility provides students with real-world feedback on concepts that promise to improve the lives of those needing help in accomplishing everyday tasks. This approach to education, infused in many of our programs, is the Jefferson difference.

The DeGregorio Family Foundation for Gastric and Esophageal Cancer Research & Education has awarded Adam Snook, PhD, of the Department of Pharmacology and Experimental Therapeutics at the Sidney Kimmel Cancer Center and Sidney Kimmel Medical College at Jefferson, a \$175,000 grant to study the effectiveness of CAR-T therapy as a treatment for gastroesophageal cancers.

DISCOVERY & DEVELOPMENTS

- Jefferson researchers have received a \$3.1 million grant to reduce the need for emergency diabetes care in older African Americans. The research, led by Barry Rovner, MD, will compare the efficacy of community care to prevent diabetes emergencies vs. enhanced usual care to lower the incidence of diabetes-related emergency department visits and/or hospitalizations.
- To help understand, document, and find effective solutions to address the issue of uncertainty that brings ER patients back to the emergency room, a Jefferson research team developed a tool — the "Uncertainty Scale" (U-Scale). The team plans to continue to refine and validate the U-Scale and use it to test interventions to alleviate different categories of uncertainty.
- Jefferson researchers are one step closer to treating organ fibrosis with a newly designed antibody-based therapy that prevents harmful collagen molecules from grouping together and forming fibrils, the building blocks of fibrotic tissue.
- Jefferson researchers may have found a way to reduce ongoing heart damage that occurs long after a severe heart attack by improving the endurance of stem-cell therapy, making it a more viable treatment option.
- Mijail Serruya, MD, PhD, a researcher at Vickie and Jack Farber Institute for Neuroscience – Jefferson Health, is collaborating with the University of Pennsylvania to develop a brain implant made almost completely out of neurons, making it more durable and effective.
- Pulmonary fibrosis, or scarring that leaves patients chronically short of breath, can progress in severity until the only option is a lung transplant. A new Jefferson study shows that restoring the lipids that help keep lung tissue flexible and inflated can help slow disease progression in laboratory models of pulmonary fibrosis.
- Radiation oncologist Wenyin Shi, MD, PhD, and colleagues recently completed a study evaluating the impact of a new treatment for glioblastoma, Tumor Treating Fields (TTFields), on the dosimetry of radiation treatment for this disease. TTFields, which is now offered to patients after completion of standard chemoradiation, has been shown to extend survival by more than 30 percent.
- New Jefferson research shows how immune cells react to generic infections, which can then trigger a reaction in the brain that causes Parkinson's disease. The research offers a new understanding of Parkinson's and where the disease actually starts.
- Jefferson researchers have found that optimizing the timing of targeted therapies for melanoma could reduce resistance to therapy and reverse tumor growth, keeping the cancer at bay.

Learn more about these and other discoveries – visit [Jefferson.edu/news](https://jefferson.edu/news).

Join the conversation on social!
[#JeffersonResearch](https://twitter.com/JeffersonResearch)

Steve Thode: 'Lucky to Be Alive' — Thanks to Jefferson



If not for that series of unfortunate events — the car accident, which led to the discovery of the cyst, which led to the detection of the aneurysm — followed by those fortunate events — such as being treated by a local doctor who knew Dr. Rosenwasser and Jefferson — “things might have turned out differently,” said Steve.

Steve and his wife, Sara, enjoy some quality time with their granddaughter, Turner.

In the span of three weeks, Steve Thode turned 60, found out he was going to be a grandfather, and had brain surgery.

“It was one crazy ride,” said Steve of his “surreal” journey through a series of unfortunate — and fortunate — events.

On April 16, 2016, he was stopped at a red light on a road in Medford, New Jersey, when a distracted driver rear-ended his car at about 50 miles per hour. While he walked away without a scratch (thanks to the seatbelt), he began having headaches later that afternoon. The local emergency department doctor ordered a CT scan that revealed a colloid cyst — a small fluid-filled sac on the brain — that was not due to the accident, and had been there his whole life. After following up with a neurologist, Steve was told the cyst was not dangerous at the time, but

that he would need to have it monitored to make sure it did not grow.

In December of that year, Steve had an MRI and an MRA (magnetic resonance angiography, which evaluates blood vessels to identify abnormalities). “As soon as the doctor walked into the room, I just felt the air was wrong,” said Steve.

The doctor gave him the good news and the bad news: The cyst had not grown, but the MRA found something else — a large aneurysm in his brain. It was six millimeters in diameter, just one millimeter shy of the threshold for immediate action. Steve was told there was a 20 percent chance the aneurysm would rupture in his lifetime; if it did, there was a 40 percent chance it would be fatal, and a 65 percent chance he would suffer a serious stroke.

After being referred to Robert Rosenwasser, MD, MBA, President of the Vickie and Jack Farber Institute for Neuroscience at Jefferson Health, Steve said he knew he had made the right choice.

“What struck me about Dr. Rosenwasser was his amazing bedside manner,” said Steve. “The first thing out of his mouth in the exam room was, ‘This is a garden-variety aneurysm in a garden-variety location.’ His calm calmed me. He went through what the procedure would entail, and he was so confident and reassuring that I didn’t freak out.”

Steve decided to have the surgery at Jefferson because, “I wanted to have it at a major metropolitan hospital dedicated solely to neurosurgery.”

After a successful craniotomy in February of last year, in which everything went just as planned, and the experience he described as “extraordinary care” at Jefferson after surgery, he was able to return to his job as a producer at a national news outlet after 12 weeks.

Steve is now completely recovered, and in October of 2017, he and his wife welcomed their first granddaughter, Turner.

“It was a circle-of-life moment,” Steve said of Turner’s birth. “New day, new baby, new life!”

See this and other stories about our patients on Giving.Jefferson.edu.



Students Shine at American Heart Association Fashion Show



Jefferson Fashion Design students showcased 27 stunning red dresses at the American Heart Association's "Rock the Red Runway" fashion show April 18. Four winning designs were featured at the AHA's annual red dress luncheon and will be prominently featured in a Macy's Center City Philadelphia display window. Congratulations to our winning student designers: Sahin Naznin, First Place; Vanessa Fath, Second Place; Devon Kremmelbein, Third Place; and Noel Watt, who won the *People's Choice Award*.

Long-Time Jefferson Trustee Richard C. Gozon Honored with Portrait



Jefferson recently honored Richard C. Gozon with a portrait, now on display at our Center City campus. Dick has been a Thomas Jefferson University trustee since 2003. He served as Interim President of the University from April 2012 to September 2013 and Chair of the Board of Trustees from September 2013 to September 2014. He also co-chaired the Jefferson Academic Board. Thank you, Dick, for your service to Jefferson! Pictured are Mark Tykocinski, MD, Provost, Thomas Jefferson University, and the *Anthony F. and Gertrude M. DePalma Dean*, Sidney Kimmel Medical College; Fran Gozon; Dick Gozon; portrait artist Michael Shane Neal; and Stephen Klasko, MD, MBA, President and CEO, Thomas Jefferson University and Jefferson Health.

Doctor of Management in Strategic Leadership Program Graduates First Class

The Doctor of Management in Strategic Leadership (DSL) program at Jefferson, designed by more than 120 stakeholders from academia and professional practice in 2014, graduated its first cohort of students in May. "It's a testimony to the innovative program design, remarkable support by the DSL faculty, and the high quality and discipline of the scholar-practitioner students," said Program Director Larry Starr. "DSL has both reimaged and re-enabled working professionals to earn this Jefferson professional executive leadership doctorate." Learn more at Jefferson.edu.

PEOPLE

- Sidney Kimmel Medical College at Thomas Jefferson University (SKMC) and Atlantic Health System have selected vascular surgeon and medical educator **James Alexander, MD**, as Associate Dean for the SKMC regional medical school campus located in Morristown, NJ.
- **Lauren Collins, MD**, Co-Director, Jefferson Center for Interprofessional Practice and Education was elected as a Distinguished Fellow of the National Academies of Practice in Medicine.
- **Kimberlee Douglas, MLandArch**, Associate Professor of Landscape Architecture, Director of the Landscape Architecture Program, is the recipient of the *2018 Lindback Distinguished Teaching Award*.
- **Kathy Herron, MS**, Assistant Professor of Midwifery, has been recognized by the American College of Nurse-Midwives with the *National Excellence in Teaching Award in 2017*.
- **Rebecca Finley, PharmD, MS**, Professor and Dean of the Jefferson College of Pharmacy, is the recipient of the *Harvey A.K. Whitney Lecture Award* from the American Society of Health-System Pharmacists.
- The American Society of Clinical Oncology (ASCO) has selected **Karen Knudsen, PhD**, Director of the Sidney Kimmel Cancer Center – Jefferson Health and Chair of Cancer Biology, to serve as the Chair-Elect (2019) and then Chair (2020) of the ASCO Genitourinary Cancers Symposium.
- Marquis Who's Who has awarded **Michael E. Mahla, MD**, Professor of Anesthesiology, with the *Albert Nelson Marquis Lifetime Achievement Award*.
- Jefferson welcomes **Marie Ann Marino, EdD, RN, PNP, FAAN**, who has been appointed as the Dean of the Jefferson College of Nursing. Dr. Marino is a nationally recognized leader in nursing practice, education and research.
- **Timothy Mosca, PhD**, Assistant Professor of Neuroscience, received a Sloan Foundation Research Fellowship for his research on how the neuronal connections in the brain are formed, broken or redistributed during normal function in order to understand how those connections go awry in disorders like schizophrenia, epilepsy and autism.
- **Robert S. Pugliese, PharmD, BCPS**, Associate Director of JeffDESIGN at the Sidney Kimmel Medical College and Founding Director of the Health Design Lab @JeffInnovation of TJU, has been honored with the *2018 Prescott Pharmacy Leadership Award* during the Annual Meeting of the American Pharmacists Association.

The Jefferson College of Population Health and Hearst Health, a division of Hearst, announced Massachusetts Housing and Shelter Alliance as the winner of the *2018 Hearst Health Prize* for its program providing permanent supportive housing for people experiencing chronic homelessness. The \$100,000 annual award is given in recognition of outstanding achievement in managing or improving health.

PEOPLE

- **Kate Behan, MD**, was recently appointed Vice President of Clinical Effectiveness at Jefferson Health – Northeast.
- Congratulations to **Randall Culp, MD**, and the team at the Philadelphia Hand to Shoulder Center for being recognized by the Honduran government for 15 years of volunteer service in providing surgery for those most in need. Dr. Culp is Professor of Orthopaedic Surgery at the Sidney Kimmel Medical College at Jefferson.
- **Kathleen (Katie) Farrell** has been appointed Chief Administrative Officer of Abington – Lansdale Hospital. Prior to this appointment, she served as the hospital's Chief Operating Officer for 10 years.
- **Meg McGoldrick**, President, Abington – Jefferson Health, received the *Rev. Dr. Martin Luther King, Jr. Interfaith Award*, which was presented by Josh Shapiro, Pennsylvania Attorney General. The award recognized her as a champion of diversity and inclusion, and honored her commitment to serving the community.
- Thomas Jefferson University Hospitals recently welcomed **Chris Motyka** as General Manager of Environmental Services.

Medical Mission Trip Provides Cost-Free Health Care to Underserved Dominican Republic Community

In February, 34 Abington Global Health Missions staff, a multidisciplinary group of Abington – Jefferson Health medical professionals, visited the Dominican Republic on an annual medical mission trip. The group consisted of four medical teams: Family Medicine, OB/GYN, Pediatrics, and Surgical. This is the 11th year the team has provided free medical services to underserved men, women and children living in a third-world country.

Jefferson Torresdale Hospital Emergency Department Named in Honor of Trustee Robert J. Truitt and His Wife, Geraldine



Jefferson Health recently dedicated its Emergency Department at Jefferson Torresdale Hospital in remembrance of the late Robert J. Truitt, a former Jefferson Health and Jefferson Health – Northeast trustee. In honor of Mr. Truitt and his widow, Geraldine, the hospital's ED was renamed The Robert J. and Geraldine Truitt Emergency Department. Pictured are members of the Truitt family, as well as Jefferson Health – Northeast senior leaders and board members.

Help for Those with Drug Addiction

Abington – Jefferson Health has partnered with Abington Police Assisting in Recovery, a program that connects those struggling with drug addiction to treatment programs and facilities. The new partnership is further demonstration of how Jefferson is living its mission – *We Improve Lives*.

Magee Wheelchair Sports Teams Score High This Season



Magee Rehabilitation Hospital – Jefferson Health is proud to offer community programs – like the Wheelchair Sports Program – that help ease the transition to a “new normal” after a life-changing injury. This year, both Magee's basketball and rugby teams qualified for national championship events. The basketball team, the Magee 76ers, traveled to Louisville, KY, where they finished 14th in the country. Our rugby team competed in Phoenix, AZ, finishing in sixth place.

NEW OFFICES & FACILITIES TO SERVE YOU

Mother-Baby/Post-Partum Unit Offers State-of-the-Art Care

Jefferson has opened the newly renovated Mother-Baby/Post-Partum Unit in the Pavilion Building on 11th Street in Center City. The renovation project was made possible in part by a Redevelopment Assistance Capital Program grant of \$1.5 million and was undertaken to enhance patient privacy and comfort and create access to state-of-the-art care.

Jefferson Otolaryngology at Yardley Now Open

Located at 385 Oxford Valley Road, Jefferson Otolaryngology at Yardley offers expert care for the complete range of ear, nose and throat conditions. The office is open Monday – Friday, 8 a.m. – 4 p.m. Appointments are available by calling 215-710-3765.

Jefferson Outpatient Imaging Now Open in Malvern

Conveniently located at 650 Carnegie Boulevard, Suite 240, Jefferson Outpatient Imaging offers comprehensive radiology services. To schedule an appointment, call 215-503-4900.

Improving Our Neighborhoods by Design

Jefferson Receives Excellence Award

Philadelphia's Community Design Collaborative recently presented its *Leverage 2018 Award* to President and CEO Stephen Klasko, MD, MBA, for excellence in design at Jefferson (Philadelphia University + Thomas Jefferson University). The award recognized two Jefferson entities: JeffDESIGN, including the curriculum for design thinking in medicine, and Jefferson's College of Architecture and the Built Environment. The Community Design Collaborative provides pro bono architectural and design services to nonprofit organizations and raises awareness of the importance of design in revitalizing communities. This year, the Collaborative has provided volunteer design services to a new initiative at JeffDESIGN — a mobile design thinking laboratory called CoLab Philadelphia, which will travel to different neighborhoods throughout the city.



Pictured are Jefferson's College of Architecture and the Built Environment Executive Dean, Barbara Klinkhammer, DIPL-ING; Thomas Jefferson University and Jefferson Health President and CEO, Stephen Klasko, MD, MBA; Community Design Collaborative Executive Director, Beth Miller; and JeffDESIGN Director, Bon Ku, MD, MPP.

Helping Our Neighbors with Health Resources, As Close As the Corner Store

A few years ago Jefferson's Center for Urban Health and the Food Trust partnered to expand the Food Trust's Healthy Corner Store initiative, a nationally recognized program designed to promote access to affordable, nutritious food and nutrition information to promote healthy decisions. As part of this expansion, professionals from Jefferson's Center for Urban Health initiated monthly health screenings, counseling with regular follow-up, and referral to health and social resources (such as insurance assistance, access to primary care and smoking cessation) to support behavior change and healthier lifestyles among corner store patrons. The expanded Food Trust model known as the "Heart Smarts" program, was recently acknowledged as a *Success Story* by the Practical Playbook, a collaborative effort that supports collective efforts between public health, primary care and others to improve the health of the community. Learn more about the many programs and communities we serve — look for the **Jefferson Center for Urban Health** online.

Jefferson Proudly Serves at 'Home Cook Heroes' Program

More than 74 teams from Jefferson have joined together over the past seven years to cook meals for the *Home Cook Heroes* program at the Gift of Life Family House in Philadelphia. The House serves as a "home away from home" for families of transplant patients receiving medical treatment at one of the eight Philadelphia-area transplant centers — including Jefferson Hospital in Center City. Pictured are Operating Room and Respiratory Department staff members from Jefferson Health in New Jersey. ▼



Philadelphia Police Recognize Jefferson Frankford Hospital with High Honor

Jefferson Frankford Hospital recently received the 15th Philadelphia Police District's *Business of the Year Award* for working with the police on several projects, including: implementing a police substation located near the hospital's Emergency Department; hosting the quarterly Police District Advisory Council meeting; and participating in joint community events. Pictured are Darryl Beard, Senior Director of Support Services, and Karen Sobczak, Clinical Associate Executive Director, both of Jefferson Frankford Hospital, with Pennsylvania State Representative Jason Dawkins.

Jefferson Hospitals Again Receive Magnet® Recognition



We're proud to announce that Thomas Jefferson University Hospitals have attained Magnet® recognition for nursing excellence from the American Nurses Credentialing Center (ANCC) for a third time. Included in this recognition are Thomas Jefferson University Hospital, Jefferson Hospital for Neuroscience, and, for the first time, Methodist Hospital. Abington Hospital – Jefferson Health recently attained Magnet designation for a fourth time. Pictured are Mary Ann McGinley, PhD, RN, Senior Vice President of Patient Services and Chief Nursing Officer, Thomas Jefferson University Hospitals (TJUH); Edmund Pribitkin, MD, MBA, Senior Vice President, Chief Medical Officer, TJUH, and President, Jefferson University Physicians and Jefferson Community Physicians; Richard Webster, RN, MSN, President, TJUH; and Dr. Klasko.



Meet Newie and Kentucky, Our Canine Clinicians

Jefferson recently welcomed lab/retriever mix "Newie" (short for Newark), right, to our pack. A much-loved addition to the Comprehensive Acute Rehab Unit in the Gibbon Building in Center City, he recently visited with Kentucky, our facility dog at Magee Rehabilitation Hospital – Jefferson Health. Both of these dedicated professionals are specially trained, with knowledge of many commands by their trainers (who are both Jefferson staff members), and help our patients perform a wide range of tasks.



◀ Children from throughout the area enjoyed the Teddy Bear Clinic this spring at our Jefferson Health campuses in New Jersey, Northeast Philadelphia, Abington and Center City. The event was part of the Philadelphia Science Festival, of which Jefferson is a proud sponsor and host of various activities.

AWARDS & ACCREDITATIONS

- The Breast Health Program at Jefferson Torresdale Hospital has been granted a three-year, full accreditation designation by the National Accreditation Program for Breast Centers, a program administered by the American College of Surgeons.
- Abington Hospital – Jefferson Health was recognized earlier this year by the National Safe Sleep Hospital Certification Program as a *Bronze Safe Sleep Hospital* for its commitment to best practices and education on infant safe sleep.
- The MS in User Experience and Interaction Design program at Jefferson has been ranked No. 25 in the *Top 50 Best Value Interaction Design/UX/HCI Graduate Degrees for 2018*, according to Value Colleges, an independent online guide to the best values in undergraduate and graduate education.
- Jefferson Health's three New Jersey-based hospitals have each maintained "Exemplar" status for their NICHE (Nurses Improving Care for Healthsystem Elders) program. The Jefferson Health Care Center, a skilled nursing facility and sub-acute rehabilitation center, has been named a NICHE "Member."
- The Maternity Center at Jefferson Washington Township Hospital has received designation as a *Blue Distinction® Center for Maternity Care*.
- Jefferson Health – New Jersey has been awarded a *2018 Top Workplaces* honor by Philadelphia Media Network. This marks the fifth consecutive year the South Jersey-based arm of Jefferson Health has been named a *Top Workplace*.
- Jefferson Health's enterprise-wide telehealth initiative, JeffConnect, has been recognized with a *Breaking Barriers through Telehealth Award*. Since 2015, Jefferson has trained more than 1,000 of its providers and conducted more than 50,000 video visits, improving patient access and increasing quality of care.
- The Jefferson College of Pharmacy has earned reaccreditation by the Accreditation Council for Pharmacy Education.
- Thomas Jefferson University Hospital has been fully reaccredited as an *American College of Surgeons Metabolic and Bariatric Surgery Accreditation and Quality Improvement Program Comprehensive Center*.

Travel Tips Video for People with Disabilities Now Available

Most of us dread long lines at the airport and the headache of flight delays as we embark on our summer vacations, but our colleagues at Magee Rehabilitation Hospital – Jefferson Health had something else on their minds. How can air travel be made easier for people with disabilities? To answer that question, they teamed up with Southwest Airlines, TSA and Philadelphia International Airport to create a travel video for individuals with disabilities. The five-minute video provides tips on preparing for airline travel, navigating the security line, phone numbers to call with questions, and what to expect during boarding and flying. Look for the video at MageeRehab.org/videos.