

Setting Your Email and Calendar Default Accounts

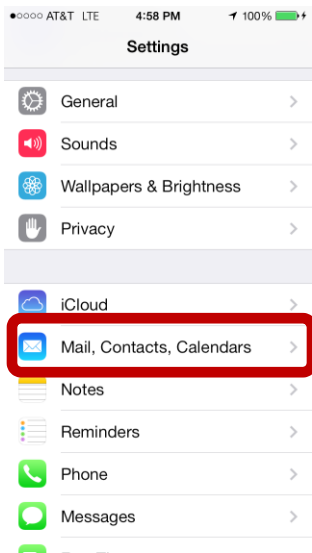
After we apply the update, the weekend you are converted, we ask that you confirm that your default accounts are setup correctly.



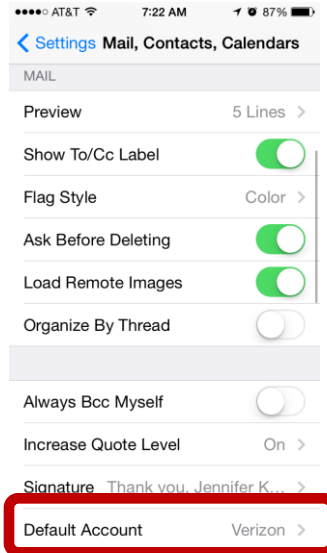
Tap on Settings

SETTING JEFFMAIL AS YOUR DEFAULT EMAIL ACCOUNT

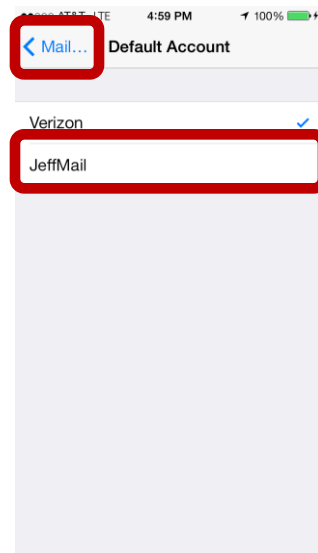
A. Tap Mail, Contacts, Calendar



B. Scroll to Mail Tap Default Account

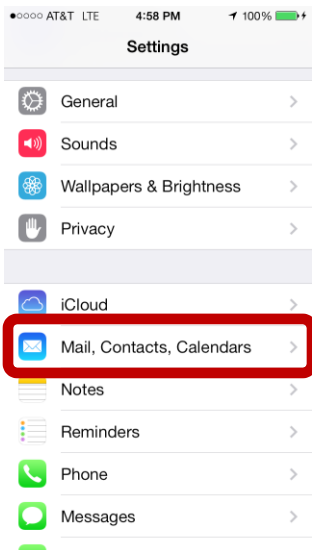


C. Tap JeffMail Tap Mail

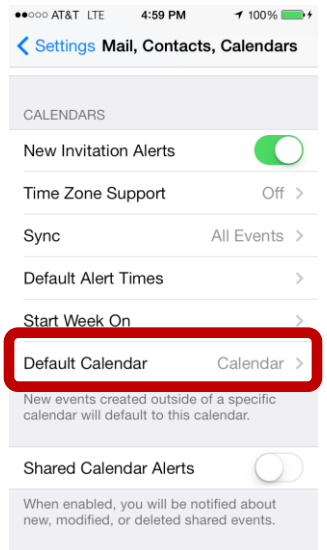


SETTING JEFFMAIL AS YOUR DEFAULT CALENDAR ACCOUNT

B. Tap Mail, Contacts, Calendar



B. Scroll to Calendars Tap Default Account



C. Tap JeffMail Tap Mail

