

Community and Trauma Counseling

Department of Counseling and Behavioral Health
College of Health Professions

Presentation Overview

- Introductions
- Program Description
- Program Concentrations
- Clinical Training
- Professional Associations
- Careers
- Question



Jeanne Felter, PhD

Chair, Department of Counseling and Behavioral Health
Associate Professor



Jeanne.Felter@Jefferson.edu



215-951-0434

Kirby Wycoff, PsyD, EdM, MPH

Program Director, Community and Trauma Counseling
Associate Professor



Kirby.Wycoff@Jefferson.edu



215-951-0924

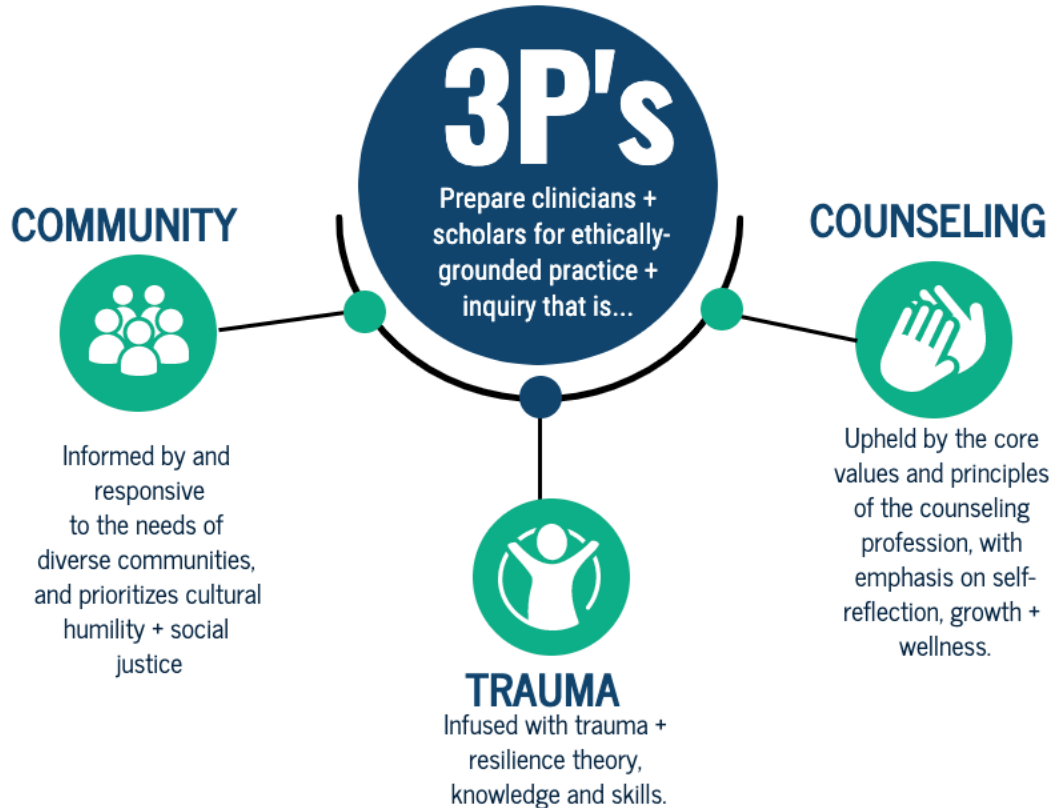


Professional Counselors practice the prevention and treatment of mental, emotional, and behavioral disorders and associated stresses that interfere with mental health and normal growth and development.

The Master of Science in Community and Trauma Counseling Program provides graduates with the knowledge and skills for trauma-informed practice as community mental health counselors across a breadth of settings including agency and institutional settings, professional private practice, and other environments influenced by traumatic events and extreme stress.



3 Guiding Principles of the CTC Program



3

ART THERAPY

TRAUMA,
ADDICTIONS +
RECOVERY

CHILD TRAUMA +
PLAY THERAPY

- **MS in Community and Trauma Counseling with Art Therapy Concentration**

- 69 credit curriculum prepares students for state licensure (LPC) and the Art Therapy Board Certification (ATR-BC) credential. *Coursework begins in the summer before standard CTC curriculum, with three AT specific courses.*
- Specialization Specific Courses: Ethics, Standards & Professional Orientation in AT; History and Theory of Art Therapy; Studio and Techniques of Art Therapy; Group Work in Art Therapy and Counseling (*replaces Group Work in Community and Trauma Counseling*); Art Therapy Assessment (*replaces Advanced Interventions II*).

- **MS in Community and Trauma Counseling with Child Trauma and Play Therapy Concentration**

- 66 credit curriculum prepares students for state licensure (LPC) and the Registered Play Therapist (RPT) credential.
- Specialization Specific Courses: Foundations of Child Centered Play (*fall year 2*); Historically Significant Approaches: Directive Play Therapy (*fall year 2*); Integrative Seminar: Intersectionality and Play Therapy (*replaces Advanced Interventions II*).

- **MS in Community and Trauma Counseling with Trauma, Addictions and Recovery Concentration**

- 66 credit curriculum prepares students for state licensure (LPC) and the Certified Advanced Alcohol and Drug Counselor (CAADC) credential
- Specialization Specific Courses: Screening, Assessment and Treatment Planning for Addiction (*fall year 2*); Ethical Treatment and Intervention for Addiction (*fall year 2*); Neurobiology and Psychopharmacology of Addiction (*replaces Advanced Interventions II*).

Clinical Training

- Practicum
 - 100 hours
- Internship
 - 600 hours



JOB TITLE

Mental Health Counselor (Licensed Professional Counselor- once post-graduate licensure requirements are met).

OUTLOOK

According to the Bureau of Labor Statistics (2018) employment of mental health counselors is projected to grow 23 percent from 2016 to 2026, much faster than the average for all occupations. Employment growth is expected as people continue to seek addiction and mental health counseling.

The majority of CTC graduates are employed within community mental health agencies, others are employed in K-12 school settings, higher education counseling centers, child welfare organizations, residential treatment centers, and private practice settings.

SALARIES

MAX \$70,100
↑
MEDIAN \$45,740

Job Outlook
(2018-2020) +22%





The future of the mental health field.
The need is high.



1,861,000 adults
in Pennsylvania
have a mental
health condition;
that is more than
six times the
population of
Pittsburgh.³



1 in 5

Adults in
Pennsylvania lives
with a *mental
illness*, defined as
a condition that
affects a person's
thinking, feeling,
or mood.^{3,4}



The Needs of Young People

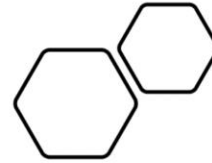
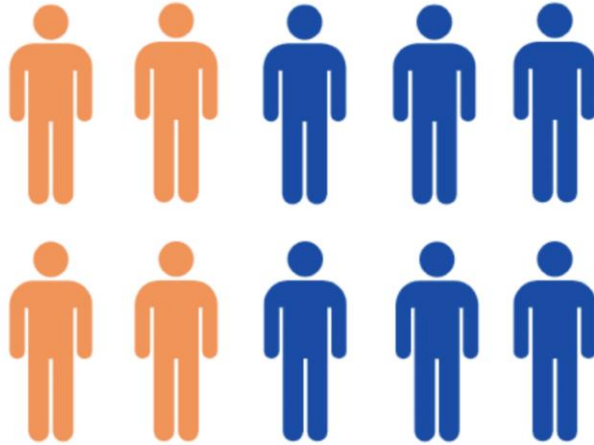
38.1% of Pennsylvania's students reported they felt sad or depressed most days in the past 12 months and 16.5% of students had seriously considered suicide.



In PA, 75% - 85% of children and youth who need mental health services do not receive them because existing mental health services are inadequate.^{9,10}

4 out of 10

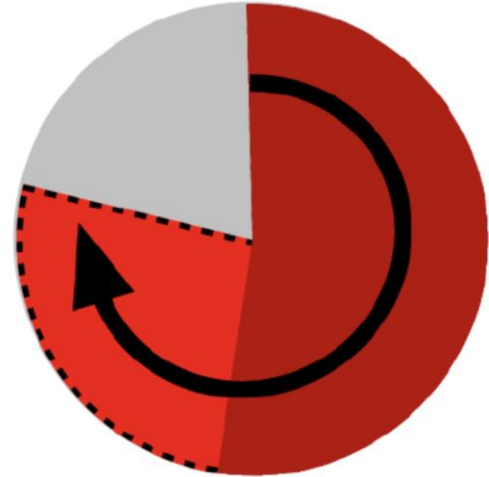
People in Pennsylvania with a mental health condition received any treatment in the last year

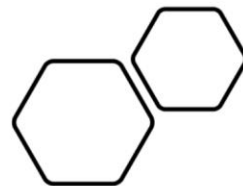


COVID-19 Effect on Mental Health in PA

DATA SHARED BY: NULTON
DIAGNOSTIC & TREATMENT
CENTER

Anxiety & depression rising
from 53% to 79% of patients





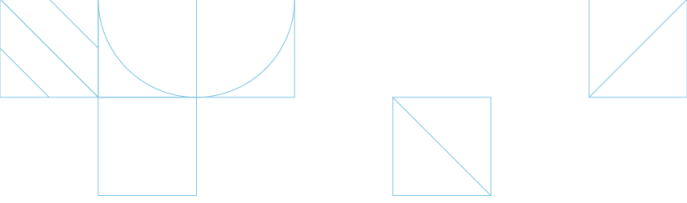
Households in Conflict

Since the COVID-19 Crisis Started

3 out of 6 households are in conflict, up 50% since the crisis started



DATA SHARED BY: NULTON DIAGNOSTIC & TREATMENT CENTER



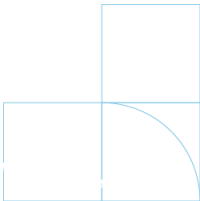
The need is significant.
We welcome you joining us in this important work.



Jefferson

CREATE WHAT'S NEXT

Wycoff + Warner, 2020





Jefferson
Thomas Jefferson University