

# Neonatal Nurse Practitioner

Jefferson College of Nursing

# Presentation Overview

- Program Description
- Plan of Study
- Sample Student Work
- Outcomes
- Careers
- Professional Associations
- Faculty Profile
- Student/ Alumni Profile
- Application Information





# Dr. Michele K Savin

## Assistant Professor and NNP Program Director



Michele.Savin@Jefferson.edu



215-503-8103 office  
302-981-3846 cell

## National Association of Neonatal Nurses Statement of NNP Practice

NNP's are members of the health delivery system, practicing autonomously in diverse areas along the wellness-illness continuum in which direct primary and acute care is provided across settings.

NNPs diagnose and treat patients with undifferentiated symptoms as well as those with established diagnoses. They provide initial, ongoing, and comprehensive care, including taking complete histories; providing physical examinations and other health assessment and screening activities; and diagnosing, treating, and managing patients with acute and chronic illnesses and diseases.

This includes ordering, performing, supervising, and interpreting laboratory and imaging studies; prescribing medication and durable medical equipment; and making appropriate referrals for patients and families.

Care includes health promotion, disease prevention, health education, and counseling as well as the diagnosis and management of acute and chronic diseases. In addition, NNPs select and perform clinically indicated advanced diagnostic and therapeutic invasive procedures.

NNPs are prepared to practice across the continuum, providing primary, acute, chronic, and critical care to neonates, infants, and toddlers through age 2.



# The Neonatal NP program has three points of entry

## BSN-MSN

For the student who wants a Master's degree

## BSN-DNP

For the student who wants a doctoral degree

## MSN-PGC

For the student who has a Master's degree and wants to be a NNP

**All students must have recent level three or four NICU nursing experience**



### MSN

#### Summer

Pathophysiology of Human Disease (NU 570)

Role of the APN (NU 605)

#### Fall

Research I (NU603)

Advanced Pharmacotherapeutics (NU667)

#### Spring

Research II, EBP (NU704 \* **DNP course**)

Neonatal Physical Assessment (NU 665)

Informatics (NU705 \* **DNP course**)

#### Summer

Health Policy (NU602)

NNP CLINICAL I (NU662)

#### Fall

NNP CLINICAL II (NU663)

Leadership and Critical Decision Making (NU696)

#### Spring

NNP CLINICAL III (NU664)

DNP program plans of study add ten more courses and are individualized.

You can complete a BSN to DNP program in as little as four years.



## Educational modalities in the NNP Program include:

Case and topical presentations

Clinical summaries

Discussion boards regarding variations in care management

Evidence-based practice analysis

Guest lecturers who are experts in the field

Hands- on simulation of procedures, cases and resuscitation

Inter-professional case work and communication reflections

Multiple choice and essay exams

Systemic quality improvement and critical analysis papers



## GRADUATION RATE

100%

## PLACEMENT RATE

100%

## RANKINGS

#11 In online Master's Degree Programs

## AWARDS

Faculty have been awarded

- 2021 National Association of Neonatal Nurses NNP Excellence Award
- 2020 AWHONN Award of Excellence in Education Nominee
- 2019 Thomas Jefferson University Award for Outstanding Teaching
- 2017 Susan Schrand Award for Professionalism, Leadership and Advocacy
- 2016 March of Dimes Graduate Nursing Scholarship Award
- 2015 Academy of Neonatal Nurses Excellence in Clinical Practice Award

## EMPLOYERS OF JEFFERSON GRADUATES

- Abington at Jefferson
- Children's Hospital of Philadelphia
- Children's Hospital of Pittsburgh
- Christiana Care Health System
- Cooper Medical Center
- DC Children's Hospital
- Einstein at Jefferson
- Geisinger Medical Center
- Hackensack Medical Center
- Hershey Medical Center
- Lehigh Valley Health System
- Main Line Health System
- Nemour's Children's Hospital
- Thomas Jefferson University Hospital

Students come from  
many states and  
graduates are  
employed nationwide



# Neonatal Nurse Practitioner

## OUTLOOK

The NNP work force is ageing as the needs of neonatal units expands. This means the outlook for job placement continues to be strong.

## SALARIES

MAX	\$124,000
↑	
MEDIAN	\$110,000
↓	
START	\$86,000

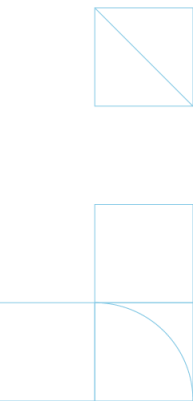
- **National Association of Neonatal Nurses**

- NANN.org
- National Association of Neonatal Nurse Practitioners
- National Certification Corporation is the Certifying Body
- Focuses on all aspects of the role and works with other neonatal agencies
- Publishes Advances in Neonatology

- **Academy of Neonatal Nursing**

- Academyonline.org
- Education focused and publishes Neonatal Network

- **Association of Women's Health Obstetric and Neonatal Nurses**

- AWHONN.org
  - Large National organization with advocacy and many partners
  - Publishes JOGNN, Nursing for Women's Health, and Healthy Mom and Baby
- 



## Dr. Michele Savin DNP, APRN, NNP-BC

Assistant Professor and Neonatal NP Program Director  
Jefferson College of Nursing

BSN from University of Delaware 1988  
MSN from University of Pennsylvania, 1992  
DNP from Thomas Jefferson University, 2017

Dr. Savin has been teaching since 1996. She is currently the National Neonatal Nurse Practitioner Faculty Special Interest coordinator.

### COURSES

---

- NU 667- Neonatal Advanced Pharmacology
- NU 665- Comprehensive Maternal and Neonatal Assessment
- NU 662- Neonatal Clinical One
- NU 663- Neonatal Clinical Two
- NU 664- Neonatal Clinical Three



## FACULTY PROFILE

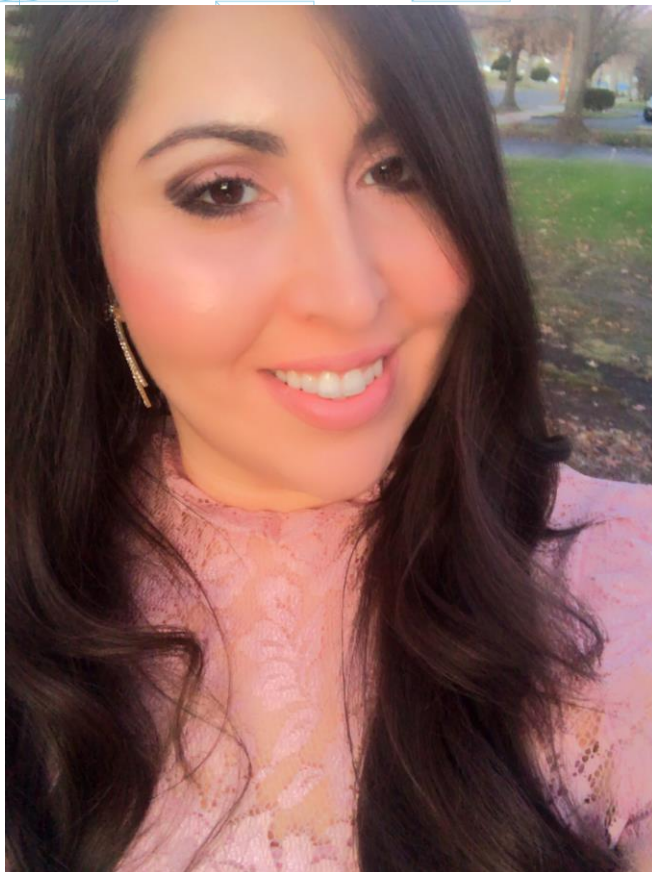
# Michele K Savin DNP, APRN, NNP-BC

Assistant Professor and Neonatal NP Program Director  
Jefferson College of Nursing

- Career began in an adult medical neurology unit where organization was key
- Moved to the NICU when no PICU openings existed; quickly realized this was where her passion lay
- Mentored by several of the first neonatal nurse practitioners
- Most comfortable in the perinatal world
- Strengths include translation of evidence and teaching families and the lay public
- Volunteer work with many National Organizations

*"I am my students' biggest cheerleader. It makes me so happy to see them transition from my student to my peer when they graduate."*





## Nicole Kilic MSN, APN, NNP-BC

Instructor Neonatal NP Program Director  
Jefferson College of Nursing

ASN from Thomas Jefferson University, 2009  
BSN from Thomas Jefferson University, 2010  
MSN from Thomas Jefferson University, 2016

Ms. Kilic is a proud graduate of Jefferson's NNP program and began teaching in 2021. She is currently completing her DNP at Thomas Jefferson University.

### COURSES

---

- NU 667- Neonatal Advanced Pharmacology
- NU 665- Comprehensive Maternal and Neonatal Assessment
- NU 662- Neonatal Clinical One
- NU 663- Neonatal Clinical Two
- NU 664- Neonatal Clinical Three



## Meredith Berman MSN, APRN, NNP-BC

NEONATAL NURSE PRACTITIONER, COOPER MEDICAL CENTER  
LANGHORNE, PA  
PHILADELPHIA, PA (current)  
CLASS OF 2021

Meredith chose the NNP program at Jefferson due to its flexibility and wide-variety of teaching methods utilized as well as its convenient Philadelphia location.

*“The NNP program at Jefferson provided me with the skills to practice as an NNP while allowing me flexibility to have a healthy work/life balance.”*





## Miranda Birch, BSN, RN

CURRENT STUDENT, NEONATAL NURSE PRACTITIONER PROGRAM  
WASHINGTON TOWNSHIP, NJ  
CLASS OF 2023

Miranda chose the NNP program for its well-known reputation and the opportunity to learn in a program that offers various clinical and simulation experiences as well as a robust didactic curriculum.

*“As a current student I am having a great time learning from experts in the field that guest lecture along with the JCN faculty.”*

Miranda recommends that prospective students learn as much as they can at the bedside and build a good foundation to continue their growth as neonatal care providers.



KEEP  
CALM  
And Love A Future  
Neonatal Nurse  
Practitioner



Jefferson

CREATE WHAT'S NEXT



# Admissions Information

Admissions Process & Application Deadlines

# Application Materials

- Online Application: [my.jefferson.edu/apply](https://my.jefferson.edu/apply)
    - Application fee \$60, waived for Jefferson employees/alumni
  - Transcripts from all colleges/universities attended
  - Letters of Recommendation (academic or professional)
    - 2 letters for MSN, 3 letters for Post Graduate Certificate and DNP applicants
  - Personal Statement with professional goals
  - Resume/CV
  - Current active RN license
- 

# Admissions Timeline

- Application Deadlines
  - Summer Deadline: February 15<sup>th</sup>
- Visit your MyJefferson portal to upload materials and check application status: [my.jefferson.edu/account](https://my.jefferson.edu/account)
- Completed applications are reviewed on a rolling basis until the deadline
- Decisions rendered in about 3 weeks

Program Information

[jefferson.edu/nursing](https://jefferson.edu/nursing)

Tuition & Financial Aid Information

[jefferson.edu/tuition-and-financial-aid](https://jefferson.edu/tuition-and-financial-aid)

Financial Aid Office

[financial.aid@jefferson.edu](mailto:financial.aid@jefferson.edu) or 215-955-2867

Office of Admissions

[enroll@jefferson.edu](mailto:enroll@jefferson.edu) or 215-951-2800





**Jefferson**  
Thomas Jefferson University