

The slide features decorative geometric patterns in the top corners. The top-left corner has a vertical grid of squares, with some squares containing diagonal lines or circles. The top-right corner has a similar grid, with some squares containing circles or diagonal lines.

# College of Health Professions Department of Medical Imaging & Radiation Sciences

Transfer Admissions

## FULL ACCREDITATION

- Excellence and leadership by teaching, undertaking research and providing exemplary clinical practice skills.



Commission on  
Accreditation  
of Allied Health Education Programs



JOINT REVIEW COMMITTEE  
ON EDUCATION IN  
RADIOLOGIC TECHNOLOGY

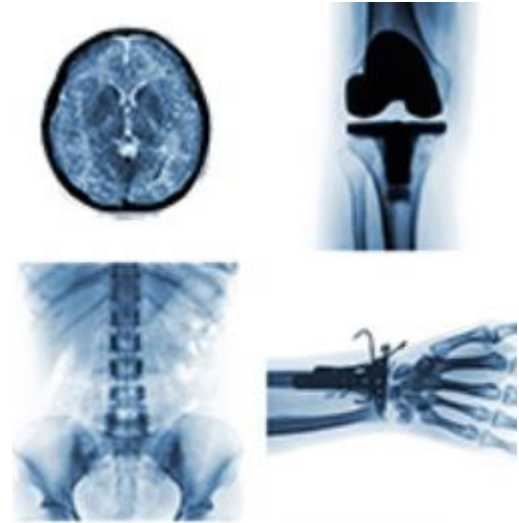
## OUR LOCATIONAL ADVANTAGE

- Center City campus with access to the Scott Memorial Library and academic support in both in-person and virtual formats
- Strong relationships with Jefferson Health System
- Practical hands-on training through innovative labs



## EMPHASIS ON TEACHING

- Student-centered education
- Small class sizes
- Personal attention
- Faculty academic advisors
- Winner of “Best Radiologic Technology Training Program, 2019” AuntMinnie



## IN GOOD HANDS

Highly accomplished faculty

Rimmon R. Greenidge, MS, R.T.(R)(MR)(ARRT)

- Experienced faculty both in the classroom and in the clinical setting
- Active member of national organizations
- Recipient of Jefferson's Alumni Emerging Leader Award



## COMPREHENSIVE CURRICULA

- Curriculum includes classroom, laboratory, and real-world experience in the clinical setting.
- Attention to patient care, critical thinking, communication, competency and professionalism.

### 1 YEAR OPTION:

The 1 Year Bachelor of Science degree program option is for students with a previous baccalaureate degree in any field *or* proof of completion of an accredited program in medical imaging and radiation sciences, and 50 specific prerequisite credits.

### 2 YEAR OPTION:

The 2 Year Bachelor of Science degree program option is for students with no education in the medical imaging & radiation sciences. Students must acquire 50 specific prerequisite credits prior to admission.

Ionizing Radiation	Non-Ionizing Radiation
Radiography Radiation Therapy Medical Dosimetry Computed Tomography Invasive Cardiovascular Technology	Cardiac Sonography General Sonography Vascular Sonography Magnetic Resonance Imaging



## Application Requirements

- **Application**  
Link to apply: [my.jefferson.edu/apply](https://my.jefferson.edu/apply)
- **Official college transcripts** from EVERY college or university attended  
If college level coursework was completed outside the United States, you must submit a course-by-course evaluation from World Education Services (WES) or another approved evaluating organization
- **Essay/personal statement**
- **Pre-requisite Courses** can be in-progress but at least 3 of the science pre-requisites should be completed at application submission
- **English language proficiency** if applicable (TOEFL, IELTS, Duo Lingo)
- **Copy of certification card** if already working in medical imaging/radiation sciences

## Optional Materials

- **Letters of Recommendation**
- **Resume**

# Important Dates

- Application deadlines for Fall 2021 students
  - May 15<sup>th</sup>: International Students
  - July 15<sup>th</sup>: U.S. Citizens, Permanent Residents, and International Students with Current F-1 Visas
- Apply early, as we review applications on a rolling basis and some concentrations can fill before the final deadline.

# Prerequisite Requirements

COURSE REQUIREMENTS	Semester Credits	
	All Programs	Medical Dosimetry
ANATOMY & PHYSIOLOGY I with lab	4	4
ANATOMY & PHYSIOLOGY II with lab	4	4
CHEMISTRY I with lab	4	4
BIOLOGY I with lab	Not required	4
PHYSICS I with lab	4	4
PHYSICS II with lab	4	4

COURSE REQUIREMENTS	Semester Credits	
	All Programs	Medical Dosimetry
PRE-CALCULUS OR HIGHER	3	3
MEDICAL TERMINOLOGY	3	3
STATISTICS	3	3
ENGLISH COMPOSITION	3	3
ENGLISH ELECTIVES	3	3
ELECTIVES	15	11
<b>TOTAL CREDITS</b>	<b>50</b>	<b>50</b>

# Prerequisite Requirements

- Grade of C or better required
- Credit by CLEP, AP or DANTES exam accepted for non-science classes only
- Science courses must be within 10 years of application to Jefferson
- Prerequisite courses can be in progress when applying. Competitive applicants have at least 3 science prerequisite courses completed when applying.

# Keys to a Successful Application

- Knowledge of your intended profession
- 3.0 cumulative GPA strongly recommended
- Strong math and sciences coursework
- Superior interpersonal skills

Selected candidates will be invited for an interview.

LEARN MORE

## Visit [Jefferson.edu/virtualvisits](https://jefferson.edu/virtualvisits)

- Watch virtual tour videos
- Schedule a virtual appointment with an admissions counselor

## Contact us

- [Enroll@Jefferson.edu](mailto:Enroll@Jefferson.edu)
- 215-951-2800

## Follow us

- [facebook.com/JeffAdmissions](https://facebook.com/JeffAdmissions)
- Twitter @JeffAdmissions
- Instagram @JeffersonAdmissions



**Jefferson**

Thomas Jefferson University