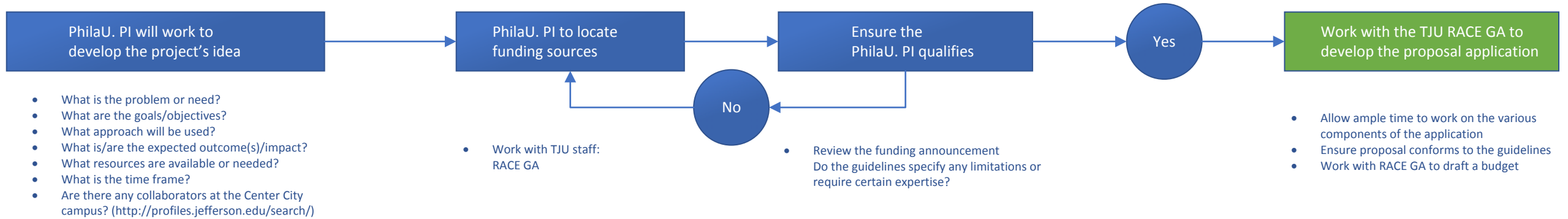


# Pre-Award Draft

1.

## Locate Funding

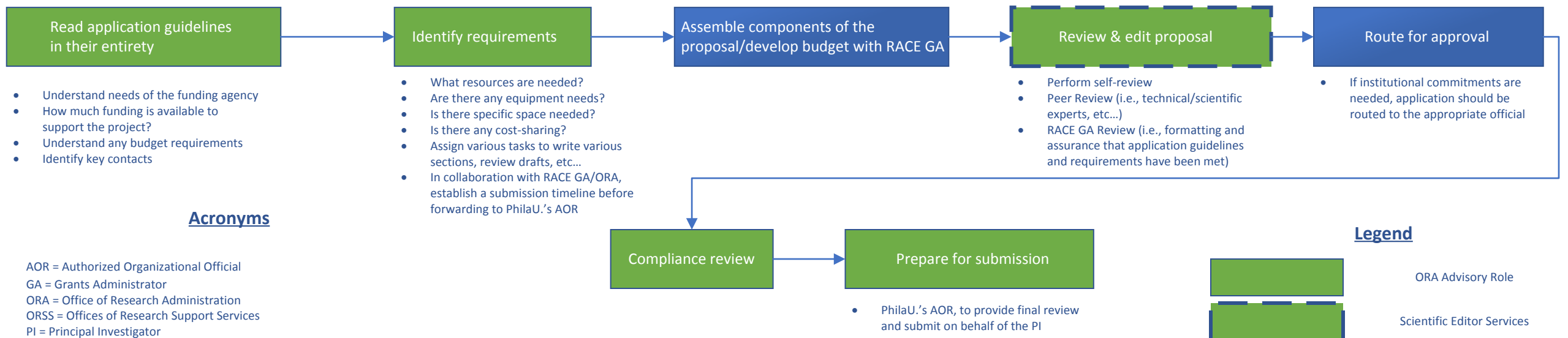
The ORSS provides information on its website for various external and internal funding sources and opportunities that support research investigators who are engaged in research development. Additionally, TJU uses a program termed *Pivot* which also assists investigators in locating various sources of funding to support an individual's research interests.



2.

## Assemble Proposal Application

In collaboration with the TJU RACE GA, the PhilaU. PI will work to complete all scientific and non-scientific aspects of the proposal application. The RACE GA, in collaboration with TJU's ORA will be available to field any questions that may arise. During the time in which the proposal application is being assembled, the PhilaU. PI may wish to utilize the services of TJU's Scientific Editor who should be able to offer thorough editorial comments/suggestions to enhance the overall application. Once the PI has performed a final self-review, the RACE GA will evaluate, and then forward to his/her ORA counterpart for a subsequent review.



### Acronyms

AOR = Authorized Organizational Official  
 GA = Grants Administrator  
 ORA = Office of Research Administration  
 ORSS = Offices of Research Support Services  
 PI = Principal Investigator  
 RACE = Research Administration Center of Excellence

### Legend

 ORA Advisory Role  
 Scientific Editor Services

Created: March 2017