

Sidney Kimmel Medical College

Information for

Prospective Students

2020 — 2021

Sidney Kimmel Medical College Office of Admissions

1015 Walnut Street, Suite 110
Philadelphia, Pennsylvania 19107-5083
T 215-955-6983
F 215-955-5151
Digital Fax: 215-503-8877
jefferson.edu/SKMC
SKMC.Admissions@jefferson.edu

The content of this document is provided for the information of the student. It is accurate at the time of printing but is subject to change from time to time as deemed appropriate by the Sidney Kimmel Medical College in order to fulfill its role and mission or to accommodate to circumstances beyond its control. Any such changes may be implemented without prior notice and without obligation and, unless specified otherwise, are effective when made.

A Code of Professional Conduct is in place at Sidney Kimmel Medical College at Thomas Jefferson University (SKMC). It embraces ethical standards of professional conduct for the Thomas Jefferson University community including students, faculty, administrators and house staff. Details of the Code are contained in the Student Handbook.

Mission Statement

Sidney Kimmel Medical College is committed to: educating physicians who will form and lead the integrated healthcare delivery and research teams of tomorrow; discovering new knowledge that will define the future of clinical care through investigation from the laboratory to the bedside, and into the community; and setting the standard for quality, compassionate and efficient patient care for our community and for the nation. We recognize that a diverse community is imperative to achieving excellence in patient care, education, and research. As we carry out our mission, we are committed to the highest standards of professionalism and aspire to be a community of discovery, learning, and inclusion.

Notice of Equal Opportunity

Thomas Jefferson University is committed to providing equal educational and employment opportunities for all persons without regard to race, color, national or ethnic origin, marital status, religion, sex, sexual orientation, gender identity, age, disability or veteran's status. The consideration of factors unrelated to a person's ability, qualifications and performance is inconsistent with this policy. Any person having inquiries or complaints concerning Thomas Jefferson University's compliance with Title VI, Title IX, the Age Discrimination Act of 1975, the Americans with Disabilities Act, or Section 504 of the Rehabilitation Act is directed to contact their Student Affairs Dean or Human Resources – Employee Relations, who have been designated by Thomas Jefferson University to coordinate the institution's efforts to comply with these laws. Any person may also contact the Assistant Secretary for Civil Rights, U.S. Department of Education, Washington, D.C. 20202, or the Director, U.S. Department of Education, Office for Civil Rights, Region Three, Philadelphia, Pennsylvania, regarding the University's compliance with the equal opportunity laws.

Contents

COLLEGE HISTORY	2
STUDENT LIFE	4
Library	4
Student Body	5
Student Organizations and Societies	6
Community Service	7
STUDENT SUPPORT SERVICES	8
Alumni Association	8
DIVERSITY AND INCLUSION	9
MEDICAL EDUCATION AT JEFFERSON	10
The Curriculum: JeffMD	10
Dual Degree Programs	13
Combined MD/PHD Program	13
Dual MD/MPH Program	13
Joint MD/MBA-MHA Program	14
STUDENT FACILITIES	15
Clinical Affiliates	16
Housing	16
EXPENSES AND FINANCIAL AID	17
APPLICATION PROCEDURE	19
Application Timetable	19
Early Decision	20
Requirements for Admission	20
Medical College Admissions Test	21
Selection Factors	22
Cooperative Programs	23
2020 MATCH LIST	24

A Message from the Dean of Admissions



*Clara A. Callahan, M.D.
The Lillian H. Brent Dean of Students and Admissions
Chair, Committee on Admissions*

Welcome! I am delighted you have chosen Sidney Kimmel Medical College at Thomas Jefferson University for your medical education and, also, with your commitment to becoming a physician. With your matriculation at Sidney Kimmel Medical College (SKMC), you will embark on an extremely challenging career that will afford you extraordinary satisfaction and the opportunity to uniquely affect the lives of others.

With this opportunity comes the responsibility of building the skills that you currently have and to incorporate those that are required of you as a physician. It will be hard work but well worth the effort. At Thomas Jefferson University, the faculty will challenge you as they endeavor to provide you with a sound foundation of knowledge, skills and attitudes. We will challenge you to use our resources, faculty and your peers to help you.

We will empower you with the skills of life-long learning.

Your educational journey at SKMC is not solely in the medical sphere. We are charged with preparing its students to address the social, ethical and legal aspects that affect the profession. Our new curriculum, JeffMD, will help you to deal with the challenges facing medicine today.

I firmly believe that our greatest asset is its remarkable student body. There is great camaraderie between the students and the Thomas Jefferson University faculty, including both clinicians and researchers, who are committed to the professional and personal development of each student. We admit bright, dedicated and altruistic students. At graduation, we know that every one has gained not only a tremendous amount of knowledge and skill, but that each person has also grown as an individual.

I have tried to capture the spirit of SKMC, although it is impossible to completely convey it on paper. I am convinced that there is no other medical school in America which provides a stronger sense of family among the teachers and students, as well as the opportunity for the best clinically balanced medical education.

I look forward to watching your growth over the next four years.

Clara A. Callahan, MD

The Lillian H. Brent Dean of Students and Admissions,
Chair, Committee on Admissions

Our History



*Mark L. Tykocinski, M.D.
Provost and Executive Vice President, Thomas Jefferson University
The Anthony F. and Gertrude M. DePalma Dean, Sidney Kimmel Medical College*

In 1824, when each of the two great centers of medical learning, London and Paris, had only one medical school, George McClellan founded Jefferson Medical College of Philadelphia, the city's second medical college and the ninth in the nation. McClellan's approach to medical education was founded on supervised student participation in the care of patients, at that time a revolutionary and highly criticized approach. Students, however, were quick to appreciate the merits of such instruction: 109 students matriculated in Jefferson's first class, and the school grew quickly in the following years.

During the mid-nineteenth century, Jefferson students had the benefit of a strong college faculty, as well as a variety of clinical settings including the General Dispensary attached to the College, the Blockley Almshouse (Philadelphia Hospital), Pennsylvania Hospital, and Wills Hospital for diseases of the eye.

About 1843, Jefferson began to rent rooms for some of the patients who underwent surgery in the school amphitheater, providing another setting for patient observation and care.

In 1856, a renowned graduate, Samuel D. Gross (class of 1828), returned to bestow upon his alma mater a stature that has lasted to this day. Thomas Eakins' portrait, "The Gross Clinic," depicts him as a commanding figure in the college amphitheater; in fact, Gross was equally preeminent in the medical profession. The finest surgeon of his time, an educator of the highest distinction, and author of 14 books (including *A Manual of Military Surgery*, used by both armies in the Civil War), Gross considered himself to be first and foremost a physician who devoted much time to family practice. He was active in many societies, and he founded several, including Jefferson's Alumni Association.

In the late nineteenth and early twentieth centuries, Jefferson expanded rapidly – three buildings were opened between 1898 and 1907. In 1924, Jeffer-

son opened the Thompson Annex, the tallest hospital building in the world at that time.

Although the campus has changed dramatically, its principal mission to provide the finest health care education never changed.

In 2014, the Sidney Kimmel Foundation bestowed a \$110 million gift to Jefferson—the largest gift in its history — and Jefferson Medical College became Sidney Kimmel Medical College at Thomas Jefferson University.

As one of the oldest institutions of higher education in the nation, SKMC has emphasized the attainment of clinical excellence in its educational programs. It encourages the student body and faculty to commit themselves to lifelong intellectual pursuits.

Sidney Kimmel Medical College is committed to maintaining quality as the hallmark of good medical practice and as the cornerstone of the future, both in education and in the provision of health care. The University also continues to develop high quality research programs to enrich education and patient care.

In carrying out its primary objective, that of educating competent physicians, Sidney Kimmel Medical College pursues the goal of excellence by:

- Selecting academically qualified students from diverse racial, ethnic, and socioeconomic backgrounds who display caring attitudes and the potential to mature into skilled and compassionate professionals.
- Developing intellectual curiosity in students and instilling in them scholarly habits which will ensure continued professional growth and development as physicians.
- Instilling in each student the highest standards of professional ethics and social responsibility.



In 2017, we unified two renowned legacies of innovation, education, research and professional excellence to form Jefferson (Philadelphia University + Thomas Jefferson University)—a university with more than three combined centuries of history. Driven by this newly united and robust past, today's Jefferson delivers forward-thinking, experiential and high impact professional education to our students in the areas of architecture, business, design, engineering, fashion and textiles, health, science and social science.

Thomas Jefferson University was founded in 1824 as Jefferson Medical College, and Philadelphia University was founded in 1884 as the Philadelphia Textile School. Both were ahead of their time and focused on the importance of experiential learning.

A rich history of landmark discoveries at Jefferson has laid the groundwork for extraordinary research endeavors on campus today. Current research programs span diverse fields such as cancer biology, neurosciences, gene therapy, genomics and computational medicine.

Student Life at Thomas Jefferson University

One of the advantages of attending Sidney Kimmel Medical College is the chance to live in a city with charm and diversity. SKMC is conveniently located within walking distance of theaters, museums, ethnic neighborhoods, shopping areas, night life, comedy clubs, and fine restaurants.

There are diverse cultural opportunities at Thomas Jefferson University and throughout the Philadelphia area. Within walking distance of campus is the home of the world famous Philadelphia Orchestra at the Kimmel Center for the Performing Arts and the renowned Philadelphia Museum of Art. Exciting sports events are provided by professional teams such as the Philadelphia Flyers Hockey, the Philadelphia Phillies Baseball, the Philadelphia Eagles Football and the Philadelphia 76ers Basketball teams. Philadelphia hosts the Mummer's Parade on New Year's Day and a variety of festivals throughout the year including a special celebration each July Fourth. There are also a multitude of community, cultural activities and celebrations.

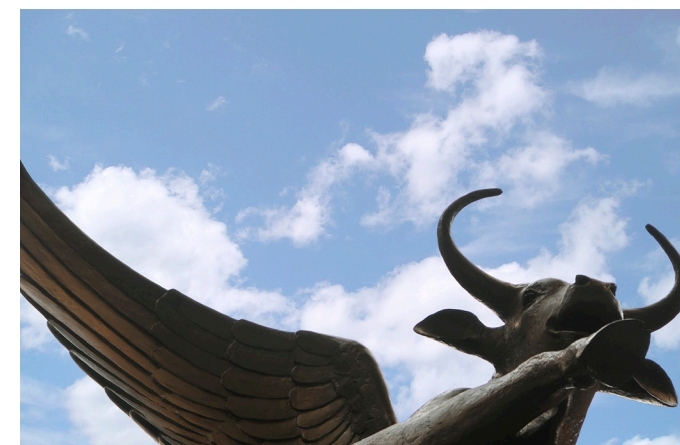
Thomas Jefferson University is proud to be situated near the most historic square mile in America: Independence National Historic Park. A few blocks from campus is the Liberty Bell, the nation's most revered symbol of liberty; Independence Hall, where the

Declaration of Independence was adopted; Carpenter's Hall, site of the first Continental Congress; the Betsy Ross House and the National Constitution Center. Visitors to Philadelphia can take advantage of ride-or-walk tours in double-decker buses, or take tours of the historic area.

Travel to and from Thomas Jefferson University and its affiliates is made easy by an efficient network of roadways and public transportation systems. For leisure activities, the southern New Jersey seashore and the Pocono Mountains, are less than a two hour drive. New York City, Washington, D.C., and Baltimore are also within two hours by car and train.

Thomas Jefferson University is fortunate to be part of the vibrant scientific and intellectual environment that Philadelphia offers. The area has the second largest concentration of colleges and universities in the country including five medical schools and many research institutions. As a member of the nation's first urban research park, Thomas Jefferson University is involved with the other 27 member institutions in cooperative biomedical research that links scientific findings from the laboratory to government and industry.

Center for Teaching & Learning; Scott Memorial Library



The Center for Teaching and Learning serves as a central location for faculty, staff, and students to access teaching and learning services at Jefferson. The Scott Memorial Library (SML) is the largest component of the CTL and a campus hub for access to print and non-print resources, study space, and learning technologies.

All floors of the Scott Memorial Library are open to the Jefferson community 24 hours a day, seven days a week. The Service Desk on the second floor is staffed 100 hours per week. The Library's collection reflects the University's focus on health care, health care edu-

cation, health research, and the history of the health sciences. It includes approximately 60,000 books and bound print journals; over 5,000 electronic journal subscriptions; 2,000 plus e-books; the University Archives; and significant holdings of rare books dating to the 15th century.

A large collection of study resources—such as skeletons, bone boxes, videos, and other course materials—is available from the second floor Service Desk. The library also manages the computer classrooms (M13 and 311 JAH and 306/307 Scott), a video editing suite that includes Articulate Storyline, Camtasia, and Captivate software, 10 small-group collaboration suites, six private study rooms, and the computers available throughout the library.

The Center for Teaching and Learning offers additional student services to help you excel:

Manuscript & Poster Presentation: Writing Center staff are available to help you prepare papers for journal publication or posters for presentations at meetings and conferences.

Public Speaking: CTL staff provide one-on-one coaching and professional speaking support. You can also record practice presentations for self-evaluation and refinement.

library.jefferson.edu/about/LibraryTour/

Campus Life & Student Activities

Many student activities of SKMC are coordinated through the Office of Student Life and Engagement

(OSLE). The office coordinates social, cultural, and recreational programs for the entire Jefferson community. Students are encouraged to participate in many events occurring regularly throughout the year, including monthly diversity celebrations, lectures, workshops, social activities and co-curricular programs.

The Office of Student Life and Engagement is located in Jefferson Alumni Hall, Room 105 and 163, and is responsible for managing the Jefferson Fitness and Recreation Center, a multipurpose fitness and recreation facility, and its many programs and services. Located in the lower levels of Jefferson Alumni Hall, the facility offers members the use of a weight/cardiovascular training area, two group exercise studios, swimming pool, gymnasium, racquetball court, dry heat sauna and men's and women's locker rooms. Programs and services include group exercise classes; fitness testing and exercise prescriptions; personal fitness training; massage therapy; intramural sports (soccer, volleyball, basketball, softball, racquetball, badminton and dodgeball); and co-curricular courses such as dance lessons, Pilates, SCUBA certification, swim lessons, and tennis instruction. Students have the opportunity to participate in program development through involvement in both OSLE and Jefferson Recreation and Fitness Center Advisory Committee.

Student Organizations & Societies

Students Participate in the program of a number of societies and organizations. The Student Organization Directory is published annually through the OSLE. This publication includes descriptions of more than 100 active campus organizations and groups. Some student organizations are listed on the next page.

Sample of Student Organizations & Societies

Alpha Omega Alpha Honor Medical Society
 American Medical Student Section at SKMC
 American Medical Women's Association
 Citizen Physicians
 DePalma Orthopaedic Society
 Gold Humanism Honor Society
 Hobart Amory Hare Honor Medical Society
 In Vivo Dance Club
 Jeff Cares for Kids
 Jeff Earth
 Jeff HOPE
 Jeff LGBTQ
 Jeff Reads
 Asian Pacific American Medical Student Association)
 Jefferson Chamber Orchestra
 Jefferson Christian Fellowship
 Jefferson Clowns for Medicine
 Jefferson Emergency Medicine Society
 Jefferson Internal Medicine Society
 Jefferson Jewish Student Association
 Jefferson Triathlon Club
 Jefferson Muslim Student Association

Jefferson Otolaryngology Society
 Jefferson Pediatrics Society
 Jefferson Psychiatry Society
 Jefferson Radiology Society
 Jefferson Soccer Club
 Jefferson Urology Society
 Jefferson Volleyball Club
 John H. Gibbon, Jr. Surgical Society
 Kathryn MacFarland Ob/Gyn Society
 Latino Medical Student Association
 Louis Pasteur Roman Catholic Society
 Medical Ethics Society
 Med-Peds Society of Philadelphia
 Military Medical Students Association
 NoRx Improv
 Pathology Interest Group
 Peter Amadio, Jr. Family Medicine Society
 Refugee Health Partners
 SKMC Student Council
 Student National Medical Association
 Thomas Duane Ophthalmology Society
 Wilderness & Disaster Medicine Society

Student Body at a Glance

SKMC matriculates an outstanding group of interesting, caring and enthusiastic students. The members of the 2019 entering class came from 102 different undergraduate schools, 29 states and six other countries. A profile of the matriculated students includes the following: overall GPA of 3.72; average total MCAT score of 514; mean age 23; 50% women; 12% of students from groups underrepresented in medicine; and 29% from non-white ethnic groups. This diversity in the student body is one of the many things which has continued to make Jefferson a special place.





From the first to the fourth year, students are invited to participate in Jeff HOPE (Health Opportunities for Prevention and Education), a student-initiated program that provides medical care and patient advocacy to Philadelphia's homeless, under supervision of the Departments of Medicine and Family and Community Medicine. The year-round program includes a seminar series, as well as on-site, interdisciplinary clinical experience for students in all four years of medical school.

Adopt-A-Mom program offers first-year students the special opportunity of partnering with an expecting mom from the JOGA Clinic and supporting her through prenatal visits, labor and delivery. Students experience not only the medical visit, but also the economic, ethnic and cultural circumstances that influence care for this urban population.

Jeff Y.E.S. is an adolescent outreach program which involves medical students in adolescent health through an ongoing relationship/partnering with urban youth at an adolescent homeless shelter (Youth Emergency Service). Students are involved in clinic groups, physician shadowing, HIV testing and counseling as well as violence prevention seminars.

Global Health Outreach

The Jefferson Studio Abroad Website offers information on Global Health activities and linkages to our students and employees. Details to help plan a study abroad experience, including tips on planning and financing a trip as well as health and safety tips, are listed. Foerderer Award for International Study applicants can also apply for the award by completing the application forms through this site. Faculty mentor recommendation can also be done electronically.

Jefferson.studioabroad.com

Learning Societies

Eight separate learning societies named after esteemed Thomas Jefferson University graduates have been created to promote communities of students and faculty that are committed to the core values of SKMC and to nurture professional and personal development. The goals are to: 1) enhance a sense of community within Thomas Jefferson University; 2) promote exchange of ideas, companionship, and mentorship; 3) highlight importance of community service; 4) develop skills in leadership, communication, doctoring, and professionalism; and 5) create an opportunity for longitudinal education. Approximately 32 students from each class form each learning society.

Community Service

Opportunities for SKMC students to immerse themselves in community service are plentiful. SKMC students participate in community service from patient care and education at local high schools to medical care and patient advocacy at five area homeless shelters.



Student Support

SKMC has many resources for students designed to maximize their education experience. SKMC offers all students the opportunity to meet and work with a wide variety of skilled personnel (student affairs officers, computer learning specialists, education specialists) and to experience a variety of educational material and methods which are geared to support their curriculum in the first two years.

The Office of Student Affairs and Career Counseling at SKMC is one of the major support services for the students. Members of the Dean's staff: Charles A. Pohl, MD; Kristin L. DeSimone, MD; Susan Rosenthal, MD; and Kathryn Traves, MD are available (located in The College Building, 1025 Walnut Street, Suite 116) to provide individual counseling, career guidance, referral services and support for study skills and educational plans. Student Affairs is a division of the Office of the Dean of SKMC and serves as the primary liaison for coordinating services and efforts on the behalf of students with faculty, administration and student-health services. The deans and administrative assistants in the Office of Student Affairs are available by appointment or on a walk-in basis, and the office is covered for emergencies in the evenings and on weekends. Among its services for incoming students is an orientation program that includes individual learning styles, study strategies, time management and stress management.

Jennifer Fogerty, MEd, Assistant Provost for Academic Affairs, and James Dyksen, MEd, the Academic Development Specialist are available to assess and counsel students experiencing academic difficulty. Their services include optimization of learning-style strategies, test taking advice, stress management, and assessment and referral of potential learning disabilities.

Student Personal Counseling Center at Thomas Jefferson University offers confidential and accessible contact with a mental health professional to discuss personal and academic concerns. The psychiatrist and therapists of the Counseling Center are available



to discuss any type of issues including, but not exclusive to, stress management, problems with family relationships, feelings of depression or anxiety, issues involving eating and substance abuse.

SKMC Alumni Association

The Jefferson Office of Alumni Relations and SKMC Alumni Association provide opportunities for our medical students, residents and fellows to meet and connect with alumni on campus and off campus through various programs and events.

Upon graduation, you immediately become a member of the SKMC Alumni Association. Get exclusive access to the Jefferson Alumni Network through a searchable, geo-mapped, alumni directory that syncs with LinkedIn and is available on your mobile device or desktop.

Join the thousands of alumni who are already engaged in professional and career development, lifelong learning, social, cultural and networking events offered throughout the year.

Visit the alumni website at Jefferson.edu/alumni for more information. Stay connected with us on Twitter, Facebook, LinkedIn and You Tube by searching for Thomas Jefferson University Alumni.

Diversity and Inclusion



At Jefferson, we define diversity as “the richness in human differences”. Inclusion is the active engagement with diversity. In an inclusive environment, we value and cherish each other for our unique identities. By doing so, we allow each person to bring their whole selves to work and school and allow them to do what they do best. Our work is in nurturing a climate that fosters belonging, respect, and value for all and encourages engagement and connection throughout the institution and community. By doing so, we will have the best chance to provide the best care to populations of patients.

In pursuit of its overall mission, SKMC recognizes that a diverse and inclusive community is imperative in achieving excellence in patient care, education, and research and ensuring health equity. When health equity is achieved, everyone has the opportunity to attain their full health potential and no one is disadvantaged from achieving this potential because of their socially determined circumstance.

Given its location in metropolitan Philadelphia, SKMC is mindful of all aspects of human differences such as socioeconomic status, race, ethnicity, language, nationality, gender, gender identity, sexual orientation, religion, geography, disability and age and gives special emphasis to the recruitment of students from racial and ethnic groups that are underrepresented in medicine (URM), those that identify as lesbian, gay, bisexual, transgender, and those questioning their sexual identity (LGBTQ), first generation college, and those from disadvantaged socioeconomic status.

To support its commitment to diversity and inclusion (D & I), SKMC sponsors the Office of Diversity and Inclusion Initiatives (ODII) whose mission is to support, promote and integrate diversity, inclusion and health equity into the fabric of the medical college. To further promote D & I, all aspects of the medical college – faculty affairs, graduate and undergraduate medical education – receive focused attention in the areas of education, environment, recruitment, retention,

patient care and community engagement. The office is led by the Associate Dean for Diversity and Community Engagement and the Assistant Dean for Diversity and Student Diversity Programs.

For students, the ODII works closely with the SKMC Curriculum Committee as well as the education leadership to optimize curricular offerings within the Health Systems Science thread of the JeffMD curriculum on topics such as unconscious bias, microaggressions, social determinants of health and structural competency. ODII also supports student affinity groups and activities which enhance multicultural awareness and cultural sensitivity and promotes diversity within the community. Examples of activities have included the Latino Medical Students Association regional conference, the Philadelphia Gay Pride Parade, Black Heritage Month, and Diversity Week. ODII sponsors the Medical Spanish Program, a four-year longitudinal program aimed at developing Spanish-speaking physicians who can provide care to an often-underserved population.

Council on Diversity and Inclusion

SKMC’s D & I efforts are driven by the Council on Diversity and Inclusion. The Council is comprised of students, resident physicians, faculty, department chairs and senior SKMC administration. Led by the Dean, the Council is charged with determining the course of D & I within the medical college. It assesses the status and effectiveness of initiatives within the student, resident and faculty communities of SKMC, makes recommendations regarding initiatives, policies, and resources needed to achieve desired outcomes, and is charged with assuring the implementation of its recommendations.

Jefferson.edu/university/skmc/diversity.html

Medical Education



JeffMD: A Curriculum for Clinical Excellence

As a student in the Class of 2025, you will contribute to SKMC’s proud tradition of excellence. You will have many opportunities to develop as a leader in your profession – in clinical settings, research labs and community service. JeffMD, SKMC’s curriculum, will support you by giving you sound fundamentals, combined with elements you can customize to your interests. You will find strong integration of clinical experience and science instruction throughout your four years here. In keeping with modern medical practice, you will gain the analytical skills to evaluate changing data and treatment options, sharpened emotional intelligence, and comfort working in multi-specialty teams. The study of medicine has always been one of the most deeply satisfying, exciting – and challenging – ways you could develop your talents. JeffMD deepens all these truths at SKMC.

What Drives JeffMD?

Mission

- To educate physicians who will serve, lead and discover.

Values

- Put the patient first.
- Foster respect and humility.
- Insist on integrity and personal responsibility.
- Develop a passion for learning, collaborative practice and continuous reflection.

Benefits of JeffMD

- **A patient-centered perspective.** Faculty and team members will constantly ask you to examine the doctor you are becoming through a patient's lenses: "What do my patients need me to know, and how do they want me to act?"
- **Early clinical experience.** Soon after matriculation, you will find yourself in contact with patients, developing clinical skills and knowledge while contributing to patient care in ways both meaningful and appropriate to your early stage in medical school. As your knowledge and skills grow, so will your involvement in patient care.
- **Contextual learning.** A constant interplay among foundational science, development of clinical skills and knowledge, and definition of a professional persona will create context and relevance for new learning.
- **Critical thinking.** Independent projects, which you will be able to shape with input from a faculty mentor, will hone your critical thinking skills. During time built into your schedule, you might choose to focus your individual research on medical education, population health, ethics, health systems, bench science or an area of humanities.
- **A range of instructional formats.** You will do much of your learning in small groups that give teams responsibility for problem-solving. Lectures, simulation, individual study and reflection will also remain important parts of the instructional portfolio.
- **Assessments.** Tests that depend on memorization will be less frequent than was historically the case. Faculty evaluations of your readiness will play a larger role in assuring you have the competencies to move to a new stage in the curriculum.
- **Earlier declaration of specialty interest.** During the last phase of the curriculum, you will have the option of focusing your coursework in a specialty you choose to strengthen your preparation for residency and other post-graduate experiences.



How JeffMD Works

Phase 1

Students focus on establishing the foundational knowledge and skills needed in all areas of practice. While basic science is the primary concern, students also participate in clinical activities that engage them in seeing the complex interplay of medical realities, life circumstances, and resources for care that contribute to effective options for prevention or treatment. In this phase, students identify the first question they want to explore in individual inquiry and begin work with a faculty mentor. At the end of the first year of studies, students have a break that can be used for vacation, scholarly inquiry or experiences abroad.

Between Phases 1 and 2

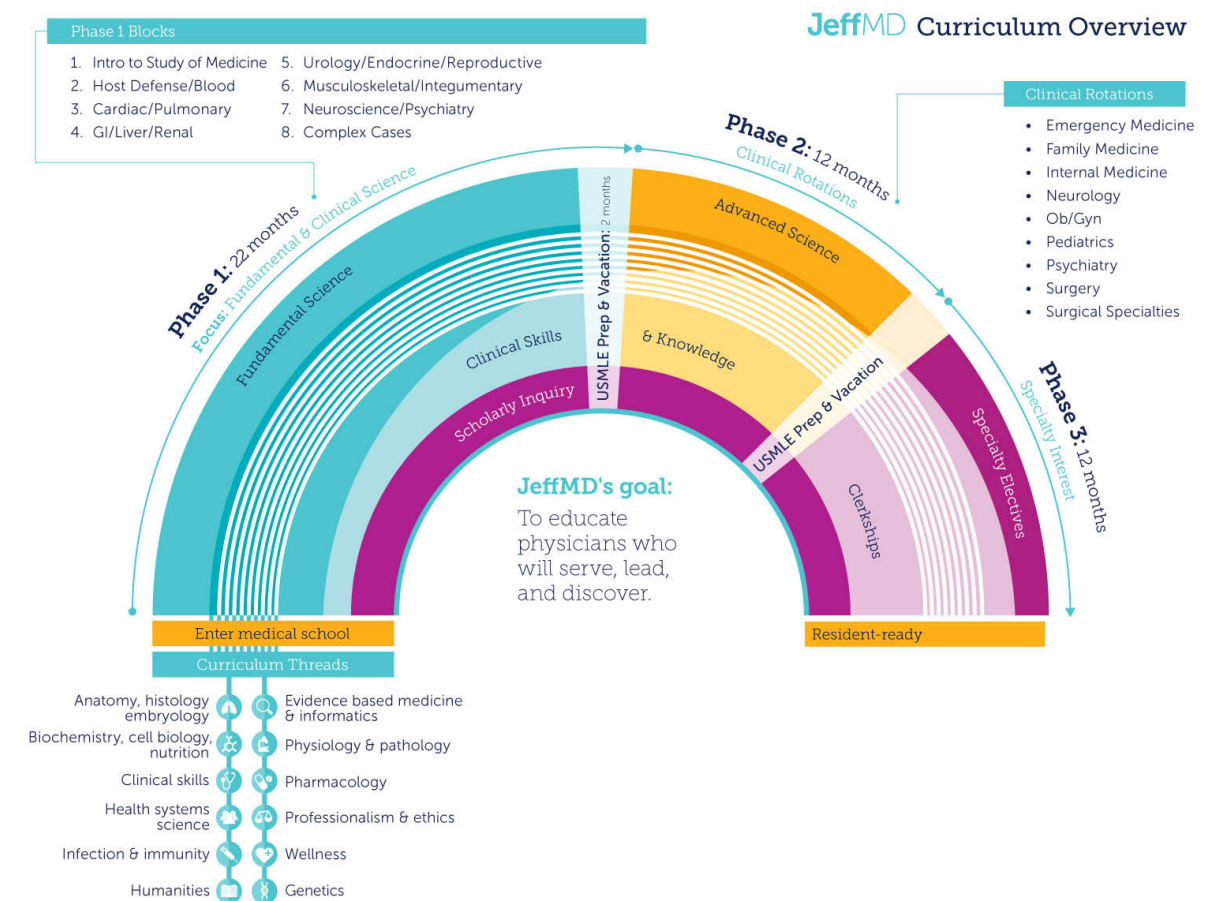
Two months without scheduled classes create time for students to prepare for and take Step 1 of the US Medical Licensing Examination and to take additional vacation.

Phase 2

Phase 2 Students begin their clinical clerkships, but also continue to learn the science associated with the issues they are seeing in their rotations and to conduct independent inquiry. Phase 2 also includes five weeks of vacation time.

Phase 3

Students customize a program of basic science, clinical skills training, and individual inquiry to advance their preparation for a specialty of their choice. If students find their first choice does not retain their interest for a career, continued work on core competencies throughout this phase will make it possible to change direction. Phase 3 builds in the flexibility for students to arrange their electives, study for Step 2 of the USMLE, and take a vacation in time frames that vary by individual. To learn more about JeffMD, please visit Jefferson.edu/JeffMD. You can also contact us with questions at www.jefferson.edu/md-program.



Educational Programs

Combined MD/PhD Program

Sidney Kimmel Medical College and the Jefferson Graduate College of Biomedical Sciences jointly sponsor a program for the training of medical scientists that requires approximately eight years of study and leads to both the MD and PhD degrees. The purpose of the combined degree program is to provide a small number of highly qualified individuals not only the broad biomedical background and clinical insights of a physician, but also the rigorous research training that is characteristic of a basic science PhD. This integrated training experience is designed primarily for students with expressed interest in biomedical teaching and research careers.

The program affords students outstanding training at the interface of science and medicine. During the initial two years, trainees complete Phase 1 of the medical school curriculum. They spend the summer months in rotations through at least three laboratories in order to familiarize themselves with modern experimental approaches to research problems and to explore potential sites for their future thesis research.

The following four years are devoted mainly to completing graduate-level coursework, conducting an original research project in the laboratory of a faculty preceptor and writing a thesis. Typically, the PhD thesis is defended at the end of this period. During the graduate school phase, the trainee maintains contact with clinical affairs through a translational research journal club designed to correlate basic science with clinical problems and clinical skills enrichment courses. In some cases, access is provided to a clinical co-advisor whose interests and investigations relate to the trainee's research problem. In the final two years, students complete the courses and clerkships that comprise Phase 2 and Phase 3 of the medical school curriculum. Both degrees are granted simultaneously at the end of the final clinical year.

Trainees may select one of the PhD programs offered by the Jefferson College of Biomedical Sciences for their thesis research. These include Biochemistry and Molecular Biology; Genetics; Immunology and Microbial Pathogenesis; Cell and Developmental Biology; Molecular Pharmacology and Structural Biology; Molecular Physiology and Biophysics; and Neuroscience.

The program seeks to attract students with superior records of undergraduate science preparation. Major emphasis is placed on the candidate's previous involvement in research and a strong motivation toward a career in academic medicine and the biomedical sciences.

Students accepted into the combined MD/PhD degree program are provided full financial support in the form of tuition remission and fellowship support for all years of study in the program providing the student remains in good academic standing.

Interested applicants to the combined MD/PhD program must 1) apply through AMCAS, 2) indicate Combined Degree application type, 3) complete secondary application to the SKMC. The deadline for application to the MD/PhD program is October 15th.

Questions should be directed to:
P 215-955-6983
SKMC.Admissions@jefferson.edu

Dual MD/MPH Program at Jefferson

In conjunction with the Jefferson College of Population Health, medical students have the opportunity to earn the master of public health (MPH) degree as part of their SKMC educational experience. Medical students interested in pursuing the MPH degree should apply in the fall term of Phase 2 of their medical education at SKMC.



The MPH degree, valued in the marketplace, provides graduates the tools to affect change in any chosen area of health care or public health. The MPH curriculum addresses disease prevention, promotion of healthy lifestyles, environmental awareness, public advocacy, communication, cultural competence, and program planning and evaluation. It is useful to students who wish to include administration, management, research, policy, or advocacy in their future careers as medical professionals. Graduates with dual degrees can pursue careers in public health departments, health centers, academia, insurance organizations, consulting firms, international programs, non-profit organizations, and the pharmaceutical industry.

Because students may transfer up to nine credits from their medical school curriculum into the MPH program, they need to complete only 36 of the 45 credits required for the MPH. Students can complete course requirements for the MPH by taking one additional year after their third year of medical school and can complete their capstone research project during their elective time during their fourth year of medical school. The MPH program is accredited by the Council on Education for Public Health (CEPH).

More information about the MPH program is available at Jefferson.edu/population_health or by contacting (215) 955-7312.

Joint MD/MBA-MHA Program in Health Administration

Recognizing that vast economic, organizational and political changes have dramatically changed the practice of medicine and transformed it into a huge industry, SKMC has sought to prepare graduates for leadership roles in this enterprise through joint MD/MBA (and MHA) partnerships with two local universities. A joint five-year MD/MBA (and MHA) program is offered in collaboration with Widener University in Chester, Pennsylvania, approximately 25 minutes from the main Thomas Jefferson University campus. An additional MD/MBA opportunity is available through the University of Delaware at its main campus in Newark, DE, 40 miles from Center City Philadelphia. These joint MD/MBA-MHA programs are under the direction of the Jefferson College of Population Health, which also provides opportunities for research, administrative field placements, and potential fellowship support in conjunction with this unique experience.

For information concerning program requirements, prerequisites and other details, please contact the Office of the Dean, Jefferson School of Population Health, (215) 503-0174 or visit Jefferson.edu/university/population-health/degrees-programs.html.

Student Facilities

Clinical Affiliates

Sidney Kimmel Medical College is situated on more than 13 acres in Center City. Located in the College Building are the College's administrative offices as well as laboratories, Foerderer Hall, the Herbut Auditorium, small lecture rooms, and the administrative offices of many of the academic departments. The adjoining Curtis Building also houses academic departments, laboratories, and small classrooms. Academic departments and laboratories, the Solis-Cohen and Brent Auditoriums, and three smaller lecture halls are located in Jefferson Alumni Hall in addition to a cafeteria and the University's recreational facilities and swimming pool.

Thomas Jefferson University Hospital is one of the area's largest medical centers. Opened in June 1978, the Gibbon Building was an innovation in hospital design. Within its nine stories are four 100-bed mini-hospitals, each with its own diagnostic and therapeutic facilities, teaching rooms, and physician offices. It features a state of the art emergency and trauma center with its own operating room. Encompassing three trauma bays, two x-ray rooms, a patient-testing lab and a resuscitation room, Jefferson's Emergency and Trauma Center and Spinal Cord Injury (SCI) Center is one of 15 facilities in the U.S. to be both a level I regional resource trauma center and a federally designated spinal cord injury center.

In addition, the hospital has other programs with a national reputation, including breast cancer diagnosis and treatment, radiation oncology, cardiac angioplasty, high-risk childbirth, medical genetics, hip replacement, treatment of skin and colorectal cancers, liver transplants, trauma, and care of hand injury.

A wide variety of clinical teaching material is available to the faculty and students of SKMC. An excellent patient mix is provided through rotations at the Thomas Jefferson University Hospital and at several,



excellent, affiliated, community hospitals and Veterans Medical and Regional Office Center. There are numerous hospitals affiliated with the Sidney Kimmel Medical College of which provide clinical training for students and residents.

Clinical training of our students is directed by faculty at affiliated hospitals located in suburban Philadelphia, northeastern, central and western Pennsylvania, as well as in Delaware and New Jersey. Approximately 3,000 beds are available for clinical teaching with a student/bed ratio varying from seven to 20 beds per student depending on the institution. Students are taught by salaried and non-salaried faculty who volunteer their services both on campus and at the affiliated hospitals. Approximately 50% of clinical teaching is done at affiliated hospitals. The majority of SKMC students continue their academic careers at Thomas Jefferson University, at the affiliated hospitals or at academic medical centers throughout the country. The college depends on both students and residents' evaluations of clinical rotations to continually enhance the curriculum.

SKMC students and residents perform well as judged by United States Medical Licensing Examination, residency positions obtained and subsequent academic appointments. The personal contact between students and faculty, an integral part of all programs, is especially important during clinical rotations where there is often a one to one relationship. Excellent opportunities are available for basic and clinical research at SKMC and both University and Affiliated Hospitals.

SKMC graduates are well prepared for future careers having received a well-rounded education and clinical experience directed by an excellent faculty from diverse backgrounds including university, community, and Veterans Administration Medical Centers.

The affiliated institutions on the next page are participants in our medical student clinical teaching programs.

Housing and Residence Life

The Department of Housing and Residence Life (DHRL) provides services for on-campus and off-campus housing. On-campus housing is guaranteed to eligible, first year students who apply for housing by May 31st. The facilities are located in the heart of the Thomas Jefferson University campus and within walking distance of Philadelphia's shopping, cultural and recreational activities.

DHRL provides a Residence Life program in all university housing facilities in order to build community and enhance the student living experience. The Residence Life staff consists of one full-time professional, the Assistant Director of Residence Life, and 12 student Resident Assistants (RAs). They provide social, educational and recreational programming, student support services, and function as liaison between the students living on-campus and the Department of Housing and Residence Life.

Barringer Residence

The Barringer Residence is a 10-story apartment building located on the southeast corner of 10th and Walnut Streets, directly across the street from Orlowitz Residence and adjacent to SKMC. This facility has a rooftop deck, fitness center, bike room, laundry room, storage, and 24-hour front desk coverage. Each apartment is unfurnished and features air conditioning/heat, wireless internet (provided by the university), cable TV access and free trash removal. All utilities are included except for electric. Barringer offers students a choice of 12 efficiency, 53 one-bedroom, 64 two-bedroom, or nine three-bedroom apartments.

Martin Residence

The Martin Residence is an 8-story community-style building located 201 South 11th Street. This residence offers either private or shared accommodations. Each room is furnished and equipped with a combination microwave, refrigerator, and freezer. All utilities are included and the room has cable TV access. Each floor has a lounge/kitchen area with cable TV and is equipped for limited food preparation. There are lounge and laundry facilities, along with 24-hour front desk coverage.

Orlowitz Building

The Orlowitz Residence is a 20-story apartment building located on the southwest corner of 10th and Walnut Streets, directly across the street from SKMC and the Barringer Residence. This facility has a fitness center, bike room, laundry room, storage facilities, and 24-hour front desk coverage. Each apartment is unfurnished and features air conditioning/heat, wireless internet (provided by the university), cable TV access and free trash removal. All utilities are included except for electric. Orlowitz offers a choice of 170 one-bedroom, 56 two-bedroom and 10 three-bedroom apartments.

Off Campus and Short-Term Housing

Off-Campus housing in the area is available to Jefferson students. The DHRL Office maintains a listing of available off-campus housing in the area on their web site, www.jefferson.edu/housing. The Department of Housing and Residence Life also provides on-campus accommodations for short-term stays.

Jefferson.edu/housing

Jefferson Affiliate Hospitals

Abington Memorial Hospital
Alfred I. DuPont Hospital for Children
Albert Einstein Medical Center
Jefferson Health Northeast (ARIA)
Bryn Mawr Hospital
Christiana Care Health System
Crozer-Keystone Health System
Excelsior Health Latrobe Hospital
Lankenau Medical Center

Methodist Hospital
Morristown Medical Center (Atlantic Health System)
Overlook Medical Center (Atlantic Health System)
Thomas Jefferson University Hospital
Virtua Health
Wilmington Veterans Affairs Medical Center
WellSpan York Hospital

Expenses and Financial Aid

Expenses for the Academic Year 2020 – 2021

<i>Tuition and Fees</i>	<i>\$60,973</i>
<i>Books and Supplies</i>	<i>\$1,060</i>
<i>Instruments/Microscope Rental</i>	<i>\$249</i>
<i>Room and Board</i>	<i>\$18,271</i>
<i>Transportation</i>	<i>\$500</i>
<i>Medical/Dental</i>	<i>\$450</i>
<i>Estimated Health Insurance</i>	<i>\$4,945</i>
<i>Miscellaneous</i>	<i>\$1,375</i>
<i>Estimated Loan Fees</i>	<i>\$476</i>
<i>Total</i>	<i>\$88,299</i>

Expenses

An estimate of minimum expenses for a first-year student will be approximately \$83,354 for the 11-month academic year. Sidney Kimmel Medical College tuition rates are reset annually. For the 2020 - 2021 academic year, the comprehensive fee is \$60,021. This fee covers tuition and other fees including library and technology fees. The Board of Trustees reserves the right to amend or add to the regulations concerning fees and method of payment, and to make such changes applicable to present as well as future students in the college.

Financial Aid

The primary responsibility for financing the cost of medical education rests with the student and family. However, it is recognized that increasing numbers of people are unable to meet medical school costs without some type of assistance.

The demonstration of need is the key factor in all financial aid awards. Determination of need is based upon confidential analysis of information provided by

the student and family to the designated Free Application for Federal Student Aid (FAFSA) Service.

Once need is established and the resources of the student and family are clearly identified, the student is directed to obtain a minimum of \$10,000 in the Federal Direct Unsubsidized Stafford Loan. If need exists beyond this amount, Thomas Jefferson University will attempt to meet a portion of this need from the university's loan and grant/scholarship funds. The University Office of Student Financial Aid also offers student information about the Federal Direct Graduate PLUS Loan and alternative (loan) programs offered through public and private agencies.

On or about November 15th, Financial Aid Application information is emailed to all accepted students. Students accepted after this date will be sent an application email within two weeks of their acceptance date. Instructions for accessing the on-line financial aid application are included with this communication. Please note that only accepted students are able to access the online financial aid application. Late accepts should file applications within two weeks of acceptance.

Financial Planning Seminars are held throughout the year. A seminar for freshmen is held during orien-

tation to acquaint incoming students with effective budgeting and debt-management techniques. In addition, the University Office of Financial Aid offers a seminar series, "Building a Financial Plan for School and the Future," that covers topics of debt management, personal budgeting, insurance planning, mortgages, investment planning and factors to consider before signing a professional contract. Students are encouraged to contact the University Office of Student Financial Aid.

University Office of Financial Aid
1015 Walnut Street, Suite 115, Curtis Bldg.
Philadelphia, Pennsylvania 19107
P 215-955-2867
financial.aid@jefferson.edu

Jefferson.edu/financial_aid

Medical Insurance

Health insurance is required for all students attending Thomas Jefferson University. We offer a comprehensive health plan designed specifically for students. If not covered by an equivalent policy of a parent or spouse, students are required to purchase the coverage offered by Jefferson. Coverage through the student plan will be billed in its equal halves, payable in July and December. Coverage through Jefferson's student policy is also available for dependents at an additional cost. Optional dental insurance is also available.

Sidney Kimmel Medical College provides a disability plan that pays a monthly benefit in the event of a disability due to a sickness or injury.



Application Procedure



Application to the MD/PhD program must be submitted to the Medical College Application Service (AMCAS) no later than October 15th. The deadline for the MD program is November 15. The AMCAS application is available online only via the AMCAS Web site (aamc.org/students/amcas).

On receipt of the verified AMCAS application, SKMC will email notification of receipt. Also included will be instructions for completing the Sidney Kimmel Medical College online secondary application with online payment capability.

The Committee on Admissions will begin reviewing the application when all supplementary materials have been received including:

1. The Sidney Kimmel Medical College Secondary Application Form
2. The non-refundable \$80 application fee
3. MCAT scores
4. The required letters of recommendation

Letters of recommendation are required to complete the application. Letters of recommendation are to be transmitted via AMCAS only. Please review the AMCAS letter transmission policy at aamc.org/students/amcas.

We prefer to receive a recommendation from a preprofessional committee. If there is no such committee, letters should be provided by individual faculty members (one letter each from Biology, Chemistry, Physics and Humanities, if possible). Applicants who have been involved in graduate programs are encouraged to provide additional letters from their graduate schools. The deadline for the receipt of letters of recommendation is January 1st.

It is the applicant's responsibility to see that the application is complete (the non-refundable \$80 application fee paid, and the required letters of recommendation received) by the specified deadline. It is also the applicant's responsibility to provide a current address and a telephone number throughout the application processing period.

Standard Application Procedure

Timetable of Application and Acceptance for the First-Year Class:

- **Filing of AMCAS application**
June 1st - November 15th
June 1st - October 15th (MD/PhD Program)
- **Receipt of Supporting Materials**
MD: January 1
MD/PhD: November 1
- **School application fee: \$80 (non-refundable)**
- **Decision notice to applicants**
October 15th, until class is filled

Application Procedure for Early Decision Program:

- **Filing of AMCAS Application**
June 1st - August 1st
- **Decision to EDP Applicants**
October 1st
- **Applicant's response to acceptance offer**
Maximum time: two weeks
- **Deposit to hold place in class (applied to tuition)**
\$100, due no later than April 30th
Deposit refundable prior to April 30th
- **Estimated number of new entrants: 272**

Transfer/Advanced-Standing Students

A limited number of applications for transfer into the third-year class may be considered (for compelling reasons) from students who are currently enrolled and satisfactorily completing their first two years in an LCME accredited medical school, and in those situations where institutional agreements exist. Transfer students must have passed the United States Medical Licensing Examination Step 1. Applications for transfer should be requested in writing after December 1st.

For students with exceptional backgrounds who may be seeking advanced standing, action by the Admissions Committee provides general acceptance only. The Committees on Student Promotion and Curriculum must then review the candidate's qualifications and credentials to determine appropriate placement in the program.

Early Decision

Sidney Kimmel Medical College participates in the Early Decision Program (EDP). Students participating in this program must submit application and all credentials no later than August 1st of the application year to AMCAS. A decision will be made concerning each application by October 1st so that candidates who are not offered places in the class have adequate time to seek acceptance to other medical schools. The EDP program should be a consideration by those applicants who strongly desire to attend Jefferson and have an excellent academic record.

Medical School Admission

The medical profession is a career for those prepared for a lifetime of service to the ill regardless of diagnosis. It has as its objective the development of profes-

sional men and women prepared to adhere to the highest standards of conduct and behavior asked of few others in our society.

The Medical College Admission Test and a baccalaureate degree from an accredited college or university in the United States or Canada are required. Credit for foreign course work must be validated and/or accepted by an accredited U.S. college or university. It is preferable to have courses graded by the traditional grading system rather than by pass/fail grades.

SKMC concurs with the concept that certain minimum academic and technical standards are essential for the successful completion of a medical education and for the granting of the degree of Doctor of Medicine. Accepted applicants requiring special accommodations should contact the admissions office as early as possible.

Applicants should read and understand the requirements for admission outlined in this brochure and be able to meet them, with or without reasonable accommodations. If there are any questions regarding these standards, contact the Office of Admissions for clarification.

Contact the Admissions Office:
P 215-955-6983
SKMC.admissions@jefferson.edu

SKMC Requirements for Admission

- The ability to analyze, synthesize and solve problems, and reach diagnostic and therapeutic judgments.
- Sufficient use of the senses of vision and hearing and somatic sensation necessary to perform a physical examination using observation, palpation, auscultation and percussion and the ability to execute motor movements reasonably required to

provide both general patient care and emergency treatment.

- The ability to relate to patients and to establish sensitive, professional relationships with patients.
- The ability to work as an effective team member of the health care team.
- The ability to communicate in writing and verbally with patients and medical colleagues with accuracy, clarity and efficiency in both routine and emergency conditions.
- The ability to learn and perform certain laboratory and diagnostic procedures.
- The ability to use good judgment in the assessment and treatment of patients.
- The ability to accept criticism and to respond by appropriate modification of behavior.
- No infectious disease which would prevent the performance of essential clinical activities required to complete the curriculum.
- The perseverance, diligence and consistency to complete the medical school curriculum and to enter the independent practice of medicine.

Course Requirements

A strong preparation in the sciences basic to medical school studies is advised. A variety of college course formats and combinations, including biology, general and organic chemistry, and physics are recommended. Courses taken to meet the basic requirements should be, in general, comparable to courses accepted for concentration in these disciplines. It is recommended that courses taken are supplemented by laboratory experiences.

Students may take upper level science courses out of educational interest or to fulfill the requirements of their major. Taking additional science courses that cover material taught within the medical school curriculum is not useful to gain admission. If advanced placement credits in required subjects are submitted, additional upper level courses are encouraged.

Breadth of education is expected. The pursuit of some discipline in depth is encouraged. A successful medical student must effectively acquire, synthesize, apply and communicate information. These are

skills which can be developed through a great variety of academic disciplines. Studies in the humanities, the social and behavioral sciences, and the development of effective writing skills are strongly suggested.

Honors courses and independent study or research are encouraged to explore, in depth, an area of knowledge and to provide scholarly experience which will facilitate a lifelong habit of self-education. All academic requirements to attain a bachelor's degree must be completed prior to matriculation.

Medical College Admission Test

The Medical College Admissions Test (MCAT) is required. The test should be taken no more than three years prior to the time of application. The best time to take the test is in the Spring prior to applying so that your scores are available when you apply. Regular applicants must take the MCAT no later than the last sitting in September; special program applicants no later than the last sitting in April-May. All applicants must request that their MCAT scores be sent to the Admissions Office. No one will be considered for interview without MCAT scores. For registration materials, contact your premedical advisor or the MCAT Program Office:

MCAT Program Office
P.O. Box 4056
Iowa City, IA 52243-4056
P 319-337-1357
aamc.org/students/mcat/registration

Deferred Admission

A deferred admission option is available to all students who are accepted. Students wishing to apply for deferral should write to the Dean of Admissions stating the reasons for deferral and their plans for the subsequent year(s). The Committee on Admissions encourages students to take advantage of intellectually and personally rewarding opportunities. Requests for deferred admission must be received no later than May 1.

Selection Factors

From an applicant pool of approximately 10,000, the Committee on Admissions each year selects a class of 272 students. Given the numbers, SKMC receives applications from more candidates meeting the basic requirements than it can possibly accept. Above and beyond the applicants' academic profile, SKMC looks

favorably on applicants who have demonstrated strong interpersonal and intrapersonal competencies, including a service orientation, cultural competence, teamwork skills, strong oral communication, ethical responsibility to self and others, reliability and dependability, resilience and adaptability and the capacity for improvement.

The Committee on Admissions would like to interview every applicant, however, the volume of applications precludes this possibility. Each year approximately 800 applicants are interviewed at SKMC. The interview serves several purposes:

- Information can be verified and clarified.
- The applicant can explain unique aspects of the application.
- The applicant can become better acquainted with the medical school.
- Intellect, ability to communicate, personal qualities and motivation can be assessed.

The interview also aids in deciding which applicants will most likely benefit from SKMC's program and is a requirement for acceptance. A student who has previously attended another medical school and

failed academically or been dismissed for unsatisfactory conduct will not be considered for admission.

SKMC is committed firmly to the educational goal of enrolling a diverse body of talented students who will reflect the character of the American people whose health needs the medical profession must serve. Essential in meeting this goal is the recruitment and matriculation of students from groups that are underrepresented in medicine. In addition, recognizing that a diverse environment as well as a diverse educational experience enhances the education of all of its learners and leads to an expertise in providing patient care to a diverse patient population, students who are financially disadvantaged, first generation college-goers or Lesbian, Gay, Bi-Sexual, Transgender, and those Questioning their sexual identity are also a focus of recruitment efforts. The Commonwealth of Pennsylvania enacted a new Medical Practice Act in 1985 (Act 112 of 1985) which specifies the qualifications for a license to practice medicine from the Pennsylvania Board of Medical Education and Licensure. The Board will not issue a license to an applicant who has been convicted of a felony under the act of April 14, 1972 (P.L. 223, No. 64), known as The Controlled Substance, Drug, Device and Cosmetic Act, or of an offense under the laws of another jurisdiction which, if committed in this Commonwealth, would be a felony under the Controlled Substance, Drug, Device and Cosmetic Act. Under most circumstances, admission will not be offered to an applicant with a felony conviction.

Acceptance for Admission to Sidney Kimmel Medical College is Conditional Upon the Following

1. Satisfactory completion of current enrollment.
2. Meeting all entrance requirements (including all academic and technical standards of SKMC).
3. Satisfactory health.
4. Agreement to comply with the rules and regulations of the Thomas Jefferson University, and Code of Professional Conduct.
5. Agreement to accept curriculum changes as approved by the faculty and tuition changes as determined by the Board of Trustee.
6. A successful criminal background check is required for acceptance.

Cooperative Programs

SKMC and the Pennsylvania State University jointly select qualified high school seniors to earn both the BS and MD degrees in seven years. Students spend three years at the University Park campus and four years at SKMC. Post Baccalaureate Linkage programs exist between Jefferson and Bryn Mawr College. These programs are designed to meet the needs of college graduates who have decided to pursue careers in medicine.

Each year, SKMC provides at least 20 places for Delaware residents in the first-year class as part of a medical education program involving the Delaware Institute of Medical Education and Research, The University of Delaware and The Delaware Medical Center. SKMC is the official Medical School of Delaware.

The Physician Shortage Area Program (PSAP) admits students from rural areas and small towns who are committed to practicing in a similar area. Priority will be given to those planning to practice family medicine, although applicants planning other specialties, or unsure of their future specialty, will also be given consideration. Since the program began in 1974, SKMC has trained more than 400 PSAP physicians, and the program has received national recognition in the *New England Journal of Medicine* and the *Journal of the American Medical Association*. Special consideration for admission and financial aid is given to students who have grown up in, or have substantial ties to a rural area or small town, and are also committed to practicing in a similar location. Priority is given to Pennsylvania and Delaware residents, and to applicants enrolled at Allegheny College, Bucknell University, Franklin & Marshall College, Indiana University of Pennsylvania, Pennsylvania State University, the University of Delaware, and the University of Scranton.

All incoming PSAP students are provided with an advisor in the Department of Family and Community Medicine at the beginning of medical school. These advisors provide curricular and career guidance, and are available as mentors throughout all four years at SKMC. PSAP students also take at least one of their required Phase 2 clinical clerkships in a smaller community outside the Philadelphia metro-



politan area (currently the family medicine clerkship at Latrobe Area Hospital, or the family medicine, internal medicine, general surgery, or obstetrics/gynecology clerkships at York Hospital). They are also encouraged to take at least one of their Phase 3 clinical rotations or electives in a rural area or small town, and are given priority to take their outpatient subinternship in family medicine at a preceptorship in a rural location. Upon graduation, PSAP students take a residency of their choice, and are then expected to practice in a rural area or small town, preferably in Pennsylvania or Delaware.

The Medical Scholars Program (MSP), an educational collaboration between the University of Delaware and Sidney Kimmel Medical College links college to medical school with an early admission process for qualified students. The first group of MSP students matriculated at SKMC in 1994.

Sidney Kimmel Medical College Graduating Class of 2020



The recognition awarded SKMC's quality medical education was demonstrated during the 2020 Match Day, the national program that attempts to match students throughout the country with their choices for residency.

Marnie Lara Abeshouse
Internal Medicine – University of Virginia, VA

Luis Alejandro Acabá Berrocal
Medicine-Preliminary – University of Illinois College of Medicine, Chicago, IL
Ophthalmology – Illinois Eye & Ear Infirmary, IL

Anitha Fathima Ahmed
Pediatrics – University of Southern California, CA

Sarah Ahmed
Medicine-Preliminary – Zucker School of Medicine at St. Luke's-Roosevelt, NY
Dermatology – St. Luke's Hospital, Anderson, PA

Andre Gharis Alabd
Urology– Indiana University, IN

Trevor G. Aldred
Family Medicine – West Virginia University School of Medicine, WV

Dev R. Amin
Otolaryngology – Thomas Jefferson University Hospital,
PA

Elyse Colleen Andrews
Pediatrics – Jefferson/duPont Children’s Hospital, PA

Akanksha Ashwini
Family Medicine – St. Joseph’s Regional Medical Center,
IN

Rikka L. Azuma
Neurology – Thomas Jefferson University Hospital, PA

Arjun Balakumar
Emergency Medicine – Stony Brook University Teaching
Hospital, NY

Chaitra Banala
Internal Medicine – Baylor College of Medicine,
Houston, TX

Ariana Barkley
Emergency Medicine – West Virginia University School
of Medicine, WV

Adam Fitzgerald Barnes
Emergency Medicine – Harbor-UCLA Medical Center,
CA

Tyler Michael Bauer
Surgery – University of Michigan Hospital, Ann Arbor,
MI

Jessica Lynne Beadle
Emergency Medicine – Christiana Care, DE

Elsie Rose Bigelow
Transitional – Scripps Mercy Hospital, San Diego, CA
Anesthesiology – University of California San Diego
Medical Center, CA

Spencer Matthew Bigelow
Transitional – Scripps Mercy Hospital, San Diego, CA
Anesthesiology – University of California San Diego
Medical Center, CA

James Billys
Surgery-Preliminary – University of Colorado School
of Medicine, Denver, CO

Anna Kathleen Bistline
Transitional – University of Pennsylvania Altoona
Hospital, PA
Dermatology – Thomas Jefferson University Hospital,
PA

Haley Mae Bizaro
Obstetrics/Gynecology – University of Tennessee
COM, Chattanooga, TN

Lily Ann Black
Family Medicine – Hospital of the University of
Pennsylvania, PA

Emily Elizabeth Bollinger
Emergency Medicine – Thomas Jefferson University
Hospital, PA

Tyler Gareth Boyce
Internal Medicine – Hospital of the University of
Pennsylvania, PA

Emma M. Bradley
Surgery – Vanderbilt University Medical Center, TN

Ariel Brown
Psychiatry – Icahn School of Medicine at Mount Sinai,
NY

Zachary D. Buccino
Anesthesiology – San Antonio Military Med Center, TX

Rachel A. Calautti
Pediatrics – Jefferson/duPont Children’s Hospital, PA

Casey Lee Callahan
Family Medicine – Hospital of the University of
Pennsylvania, PA

Andrew C. Campbell
Medicine-Preliminary – New York University Winthrop
Hospital, NY
Diagnostic Radiology – University of North Carolina
Hospitals, NC

Courtney Elizabeth Capella
Urology – Thomas Jefferson University Hospital, PA

Stefano Castagnola
Family Medicine – St. Vincent Health Center, PA

Jacqueline Pei Chia Chang
Internal Medicine – Oregon Health & Science University,
OR

Sara Emily Chapin
Internal Medicine – Hospital of the University of
Pennsylvania, PA

Rishi Chatterji
Orthopaedic Surgery – Ascension Providence Hospital,
MSU, MI

Tayoot Chengsupanimit
Internal Medicine – Case Western/University Hospital
Cleveland Medical Center, OH

Daniel Shin Choi
Orthopaedics – SurgeryHarbor-UCLA Medical Center,
CA

Hyowon Choi
Psychiatry – Thomas Jefferson University Hospital, PA

Caroline Christianson
Pediatrics – Icahn School of Medicine at Mount Sinai,
NY

Lauren Alexandria Coaxum
Emergency Medicine – Duke University Medical Center,
NC

Sean Patrick Considine
Medicine-Preliminary – University of Maryland Medical
Center, MD
Ophthalmology – Temple University, PA

Alexus Michele Cooper
Orthopaedic Surgery – Wake Forest Baptist Medical
Center, NC

Jeniece Alison Cooper
Family Medicine – University of Pittsburgh Medical
Center, PA

Nancy Giang Copeland
Family Medicine – Excelsa Health Latrobe Hospital, PA

Stephanie Anne Costa
Emergency Medicine – Tower Health/Reading Hospital,
PA

Naiga Cottingham
Pediatrics/Medical Genetics – Icahn School of Medicine
at Mount Sinai, NY

Dana Meghan Curtis
Family Medicine – Bryn Mawr Hospital, PA

Annemarie Joyce Daecher
Emergency Medicine – Albert Einstein Medical Center,
PA

Kelly Elizabeth Daniels
Otolaryngology – University of Pittsburgh Medical
Center, PA

Sonya Dave
Internal Medicine – Medical College of Wisconsin
Affiliated Hospitals, WI

Allison Rose David
Internal Medicine – Boston University Medical Center,
MA

Natalie Marie DelgadoL
Pediatrics – Duke University Medical Center, NC

Nicholas J. Demosthenes
Anesthesiology – Hospital of the University of
Pennsylvania, PA

Michele DeMuth
Pediatrics – New York University Grossman School of
Medicine, NY

Lixia Deng
Internal Medicine – Tufts Medical Center, MA

Jui Desai
Internal Medicine – University of Texas Southwestern
Medical School, Dallas, TX

Sahaj Kaushal Desai
Internal Medicine – Cooper Medical College of Rowan
University, NJ

Sean A. Dinallo
Emergency Medicine – Christiana Care, DE

Ryan Douglas Donaghy
Neurology – McGaw/Northwestern University Memorial
Hospital VA, IL



Emily Rose Dubelbeiss
Obstetrics/Gynecology – Albert Einstein Medical Center, PA

Caroline Margaret Dunne
Internal Medicine – University of Maryland Medical Center, MD

Myles Dworkin
Orthopaedic Surgery – Brown University/Rhode Island Hospital, RI

Daniel William Eddins
Psychiatry – MedStar Georgetown University Hospital, DC

David Gabriel Edelman
Orthopaedic Surgery – Prisma Health-Midlands, University of South Carolina SOM, SC

Lisa Kate Eitches
Psychiatry – George Washington University, DC

Hannah Nelkin Facey
Family Medicine – Thomas Jefferson University Hospital, PA

Megan Patricia Feick
Pediatrics – Yale-New Haven Hospital, CT

Solomon Feuerwerker
Surgery – University of Vermont Medical Center, VA

Grace Genevieve Firestone
Family Medicine – Stanford University/O'Connor Hospital, CA

Danielle Marie Polansky Fitzpatrick
Internal Medicine – Thomas Jefferson University Hospital, PA

Joseph Michael Flaxer
Psychiatry – Zucker SOM at Hofstra/Northwell Zucker Hillside, NY

Rachel Donnell Fogley
Internal Medicine – University of Rochester/Strong Memorial Hospital, NY

Kellie C. Forbes
Obstetrics/Gynecology – Christiana Care, DE

Brenda French
Internal Medicine – Thomas Jefferson University Hospital, PA

Andrew Robert Fry
Family Medicine – York Hospital, PA

Sean Gallagher
Pediatrics – University of Michigan Hospital, Ann Arbor, MI

Terry P. Gao
Surgery – Temple University Hospital, PA

Samuel Lee Garrett
Otolaryngology – NCC-Walter Reed National Military Medical Center, MD

Max Townsend Geisinger
Internal Medicine – University of Maryland Medical Center, MD

Henry R. Gemino
Emergency Medicine – University of Miami, Jackson Memorial Hospital, FL

Deanna Gill
Internal Medicine – Emory University School of Medicine, GA

Andrew C. Glunk
Emergency Medicine – Thomas Jefferson University Hospital, PA

Kendrick Villanueva Go
Family Medicine – Nellis Air Force Base, NV

Joseph Edward Godovchik
Emergency Medicine – Christiana Care, DE

Aisha Sabeerau Golaub
Obstetrics/Gynecology – Sinai Hospital of Baltimore, MD

Jonathan Seth Gordon
Internal Medicine – University of Texas SW Medical School, Dallas, TX

Nicolas Gordon
Internal Medicine – Thomas Jefferson University Hospital, PA

Jonathan Gorky
Medicine-Preliminary – University of Connecticut School of Medicine, CT
Anesthesiology – Massachusetts General Hospital, MA

Douglas A. Gouchoe
Surgery – Wright Patterson Air Force Base, OH

Allison L. Gradone
Internal Medicine – University of Michigan Hospital, Ann Arbor, MI

Alexander E. Graf
Otolaryngology – SUNY Health Science Center at Brooklyn, NY

Dean Y. Granot
Surgery – Abington Memorial Hospital, PA

Daniel Lloyd Gray
Medicine-Preliminary – Abington Memorial Hospital, PA
Diagnostic Radiology – University of New Mexico School of Medicine, NM

Jeffrey J. Green
Anesthesiology – Virginia Mason Medical Center, WA

Jessica Marie Grenvik
Obstetrics/Gynecology – Baylor College of Medicine, Houston, TX

Kevin Joel Gutierrez
Psychiatry – New York University Grossman School of Medicine, NY

Yael Horvath Gutman
Family Medicine – Thomas Jefferson University Hospital, PA

Karim Basem Hafazalla
Neurological Surgery – Thomas Jefferson University Hospital, PA

Sarah Alana Halbert
Surgery – MedStar Georgetown University Hospital, DC

George Michael Hanna III
Internal Medicine – Brown University/Rhode Island Hospital, RI

Georgette Amanda Hattier
Transitional – Nazareth Hospital, PA
Dermatology – Thomas Jefferson University Hospital, PA

Kevin Dai He
Internal Medicine – Beth Israel Deaconess Medical Center, MA

Jeffery R. Head
Neurological Surgery – University of Pittsburgh Medical Center, PA

Corrin Delrose Hepburn I
Internal Medicine – Loyola University Medical Center, IL

Marina Joan Heskell
Internal Medicine – Yale-New Haven Hospital, CT

Stephanie Elana Honig
Surgery – Lankenau Medical Center, PA

Victor Bor-Chang Hsue
Otolaryngology – Cedars-Sinai Medical Center, CA

Denis Huang
Transitional – Tower Health, Reading Hospital, PA
Ophthalmology – University of California, Davis, CA

Kathleen M. Jarrell
Surgery – Thomas Jefferson University Hospital, PA

Nicholas Jennelly
Internal Medicine – Christiana Care, DE

Alicia Jiang
Medicine-Preliminary – New York Medical College, Metropolitan Hospital, NY
Ophthalmology – New York Medical College, NY

Clinton James Jordan
Transitional – Virginia University School of Medicine, WV
Ophthalmology – Virginia Eye Institute, WV

Emily Brady Kager
Psychiatry – Montefiore Medical Center, Einstein, NY

Stephanie R. Kahn
Pediatrics – Jefferson/duPont Children’s Hospital, PA

Chamaka Anushanga Kalutota
Internal Medicine – Rutgers-Robert Wood Johnson Medical School, NJ

Mica Ann Kane
Medicine-Primary Care – Brown University/Rhode Island Hospital, RI

Michelle Kantarovich
Internal Medicine – Westchester Medical Center, NY

Michael R. Kaufman
Medicine-Primary Care – University of Virginia, VA

Mark Basha Keroles
Medicine-Preliminary – Pennsylvania Hospital, PA
Neurology – Stanford University, CA

Natalie S. Khan
Family Medicine – Christiana Care, DE

Adam Kiejdan
Psychiatry – Albert Einstein Medical Center, PA

Jennifer Young Kim
Family Medicine – University of California, Irvine, CA

Kailyn Kim
Internal Medicine – Olive View-UCLA Medical Center, CA

Fred C. Kobylarz
Surgery – Eisenhower Army Medical Center, GA

Danielle M. Kovalsky
Emergency Medicine – Cooper Medical College of Rowan University, NJ

Rebecca Louise Krain
Medicine-Preliminary – Lankenau Medical Center, PA
Dermatology – Thomas Jefferson University Hospital, PA

Priyanka Ruth Kumar
Internal Medicine – University of California, Irvine, CA

Benjamin Starkey Lampe
Family Medicine – Martin Army Community Hospital, GA

Shannon Haley LaStrange
Anesthesiology – Thomas Jefferson University Hospital, PA

Talya Sarah Laufer
Medicine-Preliminary – Cooper Medical College of Rowan University, NJ
Radiation Oncology – Thomas Jefferson University Hospital, PA

Rebecca H. Lawrence
Medicine-Primary Care – Icahn School of Medicine at Mount Sinai, NY

Kyle Nguyen Le
Obstetrics/Gynecology – Cooper Medical College of Rowan University, NJ

Megan My Le
Internal Medicine – Tulane University School of Medicine, LA

Michelle Chan Leach
Urology – University of California, San Diego, CA

Kevin Ernest Leahy
Medicine-Preliminary – Mercy Catholic Medical Center, PA
Physical Medicine and Rehabilitation – Temple University Hospital, PA

Jeffrey Lee
Medicine-Psychiatry – Duke University Medical Center, NC

Joon Yau Leong
Urology – Thomas Jefferson University Hospital, PA

Nathan J. L’Etoile
Pediatrics – Children’s Hospital, Philadelphia, PA

Hannah Michelle Levine
Pediatrics – Montefiore Medical Center/ Einstein, NY

Christina Elizabeth Lewis
Pediatrics – Jefferson/duPont Children’s Hospital, PA

Jonathan Jone-Hoe Li
Medicine-Preliminary – NYU Grossman School of Medicine, NY
Anesthesiology – NYU Grossman School of Medicine, NY

Ryan Li
Surgery-Preliminary – Rutgers-Robert Wood Johnson Medical School, NJ

William Tianyu Li
Orthopaedic Surgery – University of Pittsburgh Medical Center, PA

Spencer S. Liem
Urology – Mt. Sinai Medical Center, FL

Nicholas Sheng Lim
Medicine-Preliminary – Lankenau Medical Center, PA
Diagnostic Radiology – Albert Einstein Medical Center, PA

Conan Song Liu
Internal Medicine – University of California Davis Medical Center, CA

Zachary Wayne Lorenz
Medicine-Primary Care – Johns Hopkins Bayview Medical Center, MD

Christopher Lucasti II
Orthopaedic Surgery – University at Buffalo School of Medicine, NY

Andrew D. Lynch
Internal Medicine – Kaiser Permanente, Oakland, CA

Danielle Chuang MacLean
Residency deferred

Malika Laurence Madhava
Internal Medicine – NY Presb Hospital, Weill Cornell Medical Center, NY

Alisha Paro Maity
Internal Medicine – Lankenau Medical Center, PA

Philip Manasseh
Internal Medicine – Albert Einstein Medical Center, PA

Harnoor Kaur Mann
Internal Medicine – University of Pittsburgh Medical Center, PA

Bartlomiej Jan Maracewicz
Medicine-Preliminary – Mercy Catholic Medical Center, PA
Anesthesiology – Brown University/ Rhode Island Hospital, RI

Leslie Morgan Mark
Surgery-Preliminary – Morristown Memorial Hospital, NJ

Ribu Mathew
Internal Medicine – Stony Brook University Teaching Hospitals, NY

Matthew N. Mattera
Anesthesiology – Hospital of the University of Pennsylvania, PA

Jacob Michael Mazza
Neurological Surgery – Rush University Medical Center,
IL

Steven Anthony Medeiros, Jr.
Surgery – Geisinger Health System, PA

Neelam Devendra Mehta
Transitional – Emory University School of Medicine, GA
Anesthesiology – Emory University School of Medicine,
GA

Dante Joseph Merlino
Otolaryngology – Mayo Clinic School of Graduate
Medical Education, MN

Jeffrey D. Minuk
Internal Medicine – Temple University Hospital, PA

Rebecca E. Montana
Psychiatry – Thomas Jefferson University Hospital, PA

Kristofer Montoya
Emergency Medicine – Johns Hopkins Hospital, MD

Shane Matthew Morris
Internal Medicine – Madigan Army Medical Center, WA

Tanziyah Muqem
Neurology – Duke University Medical Center, NC

Michael D. Murphy
Internal Medicine – University of Massachusetts Medical
School, MA

Shmuel Nadler
Pediatrics – Zucker SOM at Hofstra/Northwell Cohen
Children's, NY

Jennifer Hannah Newman
Neurology – Thomas Jefferson University Hospital, PA

Chuck T. Nguyen
Anesthesiology – Riverside University Health System,
CA

Brett Houston Palmer
Transitional – Crozer-Chester Medical Center, PA
Diagnostic Radiology – University of Colorado School
of Medicine, Denver, CO

Nishant Chaitanya Pandya
Pediatrics – Yale-New Haven Hospital, CT

Ursula W. Parlin
Pediatrics – University of Pittsburgh Medical Center, PA

Jennifer Lynn Perugini
Surgery-Preliminary – Medical University of South
Carolina, SC

Matteo V. Petrera
Anesthesiology – Thomas Jefferson University Hospital,
PA

Anya Lia Eden Reinin Platt
Pediatrics – University of California, San Francisco, CA

Spencer James Poiset
Surgery-Preliminary – Temple University Hospital, PA
Radiation Oncology – Thomas Jefferson University
Hospital, PA

Storm C. Portner
Psychiatry – Icahn School of Medicine at Mount Sinai,
NY

Jack Qiu
Transitional – Mercy Catholic Medical Center, PA

Natasha Qureshi
Pediatrics – Children's National Medical Center, DC

One Hyuk Ra
Medicine-Preliminary – Albert Einstein Medical Center,
PA
Anesthesiology – Brigham & Women's Hospital, MA

Anjithaa Radakrishnan
Psychiatry – Semel Institute for Neuroscience, CA

Sage P. Rahm
Neurological Surgery – University of Alabama Medical
Center, Birmingham, AL

Stephanie L. Rakestraw
Surgery – University of Alabama Medical Center,
Birmingham, AL

Leena Tushar Ramani
Transitional – Lehigh Valley Hospital, PA
Dermatology – Thomas Jefferson University Hospital,
PA

Kanika Ramchandani
Family Medicine – Hospital of the University of
Pennsylvania, PA

Christopher M. Ramsay
Psychiatry – Duke University Medical Center, NC

Nicholas Henry Rankin
Emergency Medicine – Thomas Jefferson University
Hospital, PA

Goutham Ravipati
Internal Medicine – University of Texas Southwestern
Medical School, Dallas, TX

Alexander Jamal Carvalho Rawji
Psychiatry – Ocean Medical Center, NJ

Michael J. Reynolds
Orthopaedic Surgery – Allegheny General Hospital, PA

Jennifer Anne Rich
Obstetrics/Gynecology – Thomas Jefferson University
Hospital, PA

Benjamin Ian Richter
Internal Medicine – New York University Grossman
School of Medicine, NY

Melissa Lauren Riegel
Obstetrics/Gynecology – Hospital of the University of
Pennsylvania, PA

Gabriella Rollo
Anesthesiology – University of Arizona College of
Medicine, Tucson, AZ

Lindsey A. Roth
Obstetrics/Gynecology – New York University Grossman
School of Medicine, NY

Erin Elizabeth Royal
Family Medicine – Christiana Care, DE

Rachel Ann Sachs
Surgery-Preliminary – Rutgers-Robert Wood Johnson
Medical School, NJ

Malya Sahu
Neurology – Hospital of the University of Pennsylvania,
PA

Polina Sakkal
Medicine-Preliminary – Albert Einstein Medical Center,
PA
Anesthesiology – Thomas Jefferson University Hospital,
PA

Ellika Marjan Salari
Surgery-Preliminary – Thomas Jefferson University
Hospital, PA

Harold Irvin Salmons IV
Orthopaedic Surgery – Mayo Clinic School of Graduate
Medical Education, MN

Manuel R. Sanchez-Gonzalez
Pediatrics – Jefferson/duPont Children's Hospital, PA

Hanna Lee Sandhu
Surgery-Preliminary – New York University Grossman
School of Medicine, NY

Julia Marie Sanger
Family Medicine – University of Rochester/Strong
Memorial Hospital, NY

Nicole M. Scaramella
Internal Medicine – Hospital of the University of
Pennsylvania, PA

Patrick Karl Schlitt
Pediatrics – University of Pittsburgh Medical Center, PA

Benjamin Elliot Schoenberg
Emergency Medicine – Riverside Community Hospital,
CA

Elizabeth Rose Schoenberg
Medicine Preliminary – University of Maryland-Mercy
Medical Center, MD
Dermatology – Johns Hopkins Hospital, MD

Pooja Selvan
Internal Medicine – Cooper Medical College of Rowan
University, NJ

Sonia Sethi
Medicine-Primary – CareCook County Health and
Hospital System, IL

Dipal Shah
Emergency Medicine – University of Central Florida
College of Medicine, FL

Taylor L. Shannon
Child Neurology – Children's Hospital, Los Angeles, CA

Katie Miao-Hua Shen
Internal Medicine – Cleveland Clinic Foundation, OH

Angell Shi
Transitional – Beth Israel Deaconess Medical Center, MA
Ophthalmology – Tufts/New England Eye Center, MA

John Fendell Shields
Medicine Preliminary – Sinai Hospital of Baltimore, MD
Diagnostic Radiology – University at Buffalo School of Medicine, NY

Patrick W. Shields
Psychiatry – St. Luke’s Hospital, Anderson, PA

Daniel Ike Shpigel
Emergency Medicine – Thomas Jefferson University Hospital, PA

Nicholas Morris Siena
Surgery – UCLA Medical Center, CA

Matthew Edward Sikina
Emergency Medicine – Cooper Medical College of Rowan University, NJ

Caitlin Jane Silvestri
Surgery – NY Presb Hospital, Columbia University Medical Center, NY

Andrew Sinensky
Transitional – Bassett Medical Center, NY
Diagnostic Radiology – University of Maryland Medical Center, MD

Varun Singh
Interventional Radiology – Massachusetts General Hospital, MA

Christa M. Smaltz
Internal Medicine – Thomas Jefferson University Hospital, PA

Ian Rutherford Smith
Emergency Medicine – St. Luke’s University Hospital, Bethlehem, PA

Shelby R. Smith
Orthopaedic Surgery – Rush University Med Center, IL

Kathryn Alexandra Sommers
Neurology – Yale-New Haven Hospital, CT

Kodie William Stem
Family Medicine – York Hospital, PA

Michelle Benson Stickler
Internal Medicine – University of Maryland Medical Center, MD

Christina Marie Stuart
Surgery – University of Colorado School of Medicine-Denver, CO

Patrick Sean Sullivan
Transitional – Crozer-Chester Medical Center, PA
Diagnostic Radiology – Boston University Medical Center, MA

Lauren Madeline Szeto
Internal Medicine – Temple University Hospital, PA

John Gabriel Szigety
Pediatrics – University of Colorado School of Medicine-Denver, CO

Margaret Virginia Szot
Medicine-Primary Care – Thomas Jefferson University Hospital, PA

Nicholas Frank Taflin
Internal Medicine – Oregon Health & Science University, OR

Jonathon Tsai Teng
Medicine-Preliminary – Mercy Catholic Medical Center, PA
Physical Medicine and Rehabilitation – University of California, Irvine, CA

Seth L. Teplitsky
Urology – University of Kentucky, KY

Tony Thieu
Medicine-Preliminary – Morristown Memorial Hospital, NJ
Ophthalmology – Temple University, PA

Kailey Catherine Tindle
Emergency Medicine – Vanderbilt University Medical Center, TN

Darayus Cyrus Toorkey
Neurology – University of Virginia, VA

Evelyn Tran
Transitional – Riverside Community Hospital, CA
Ophthalmology – Temple University, PA

Gregory Scott Troutman
Medicine-Primary Care – Hospital of the University of Pennsylvania, PA

Sanika Udyaver
Medicine-Preliminary – Lankenau Medical Center, PA
Ophthalmology – Wills Eye Institute, PA

Megan Elizabeth Uehling
Medicine-Pediatrics – University of Maryland Medical Center, MD

Mikdat Ulas
Surgery-Preliminary – Case Western/University Hospital Cleveland Medical Center, OH

Abhishek Umashankar
Emergency Medicine – Ochsner Clinic Foundation, LA

Anusha Vemuri
Pathology – University of Chicago Medical Center, IL

Chantel M. Venkataraman
Internal Medicine – Thomas Jefferson University Hospital, PA

Michael J. Vido
Pediatrics – Children’s Hospital, Philadelphia, PA

Andrew Robert Viscusi
Transitional – Lehigh Valley Hospital, PA
Physical Medicine and Rehabilitation – Carolinas Medical Center, NC

Anthony Kha Le Vu
Pediatrics – Children’s Hospital, Los Angeles, CA

Alison Elizabeth Walker
Pediatrics – Cincinnati Children’s Hospital, OH

Jackson Ryan Walker
Internal Medicine – University of Cincinnati Medical Center, OH

Carrie Dianne Walsh
Emergency Medicine – Massachusetts General Hospital, MA

Maeve E. Ward
Internal Medicine – Montefiore Medical Center, Einstein, NY

Eugene Peter Warnick III
Orthopaedic Surgery – Geisinger Health System, PA

Stephanie Wey
Medicine-Preliminary – University of Cincinnati Medical Center, OH
Ophthalmology – University of Cincinnati, OH

Alexander E. White
Orthopaedic Surgery – Hospital for Special Surgery, NY

Hugh S. Wilkens
Diagnostic Radiology – University of Pittsburgh Medical Center, PA

Sigrid Lauren Williamson
Surgery – Tower Health, Reading Hospital, PA

Elaine Chen-Yi Yang
Urology – Case Western Reserve, OH

Mina Chelsea Youn
Neurology – NYU Grossman School of Medicine, NY

Daisy L. Zhang
Family Medicine – St. Luke’s University Hospital, Bethlehem, PA

Justine Zhang
Transitional – St. Luke’s University Hospital, Bethlehem, PA
Diagnostic Radiology – Montefiore Medical Center, Einstein, NY

Adam Charles Zimilover
Internal Medicine – Zucker SOM at Hofstra/ Northwell, NS & LIJ, NY

Madeline B. Zimilover
Pediatrics – Zucker SOM Hofstra/Northwell Cohen Children’s, NY

Jonathan M Zuckerman
Family Medicine – University of Pittsburgh Medical Center, St. Margaret, PA

Directions

Sidney Kimmel Medical College is conveniently located in downtown Philadelphia near the central airline, rail and bus transportation terminals, as well as the crossroads of several major interstate highways. Here are the directions by air, train, bus and car.

From Northern or Western Pennsylvania or from the West

Follow the Pennsylvania Turnpike. Take Exit 326 (Valley Forge). After the toll booth, follow signs to the Schuylkill Expressway (I-76) east. As you approach Center City, stay to your left and follow 676 East to the 8th Street exit. Turn right on 8th Street to Walnut Street. Turn right on Walnut Street to 10th Street.

From Washington, D.C. and South

Follow I-95 North to exit 22 (Central Philadelphia/ Independence Hall exit). Staying in the right lane, follow the ramp to Callowhill Street. Turn left at 8th Street to Walnut Street and turn right. Proceed two blocks to 10th Street.

From New York, New Jersey or the North

Take the New Jersey Turnpike to the Camden-Philadelphia Exit 4. Follow Route 73 North, to Route 38 West, to Route 30 West, to the Ben Franklin Bridge. After crossing the bridge, stay in the left lane and make a left onto 8th Street. Follow 8th Street to Walnut Street. Make a right on Walnut Street to 10th Street.

By Air

From Philadelphia International Airport - Take the SEPTA "Philadelphia Airport Rail Line" departing from the baggage claim area of terminals A, B, C, D and E at the airport. (SEPTA is the Southeastern Pennsylvania Transportation Authority.) Take the train to Jefferson Station (11th Street exit). From the station walk two blocks south to Walnut Street.

Airport Information: phl.org/Pages/HomePage

By Train

Philadelphia is served by AMTRAK (National Railroad Passenger Corporation), which operates rail service along the busy Northeast Corridor. Depart AMTRAK train at 30th Street and Market Street. Take SEPTA train to Jefferson Station (11th Street exit). From the station walk two blocks south to Walnut Street.

Amtrak: amtrak.com/home

By Bus

Inter-city bus service is excellent, with daily arrivals from all parts of the country. Philadelphia's terminals for Greyhound and Trailways are located in the heart of the city, providing easy access to the school.

Greyhound Terminal: 215-931-4075

Peter Pan Lines: peterpanbus.com

By Car

I-95 and the New Jersey Turnpike. These limited-access highways and their connections enable motorists to reach the city conveniently and quickly from many other sections of the country.



Sidney Kimmel Medical College
at Thomas Jefferson University

Office of Admissions

1015 Walnut Street, Suite 110
Philadelphia, Pennsylvania 19107-5083

Phone: 215-955-6983

Fax: 215-955-5151

Digital Fax: 215-503-8877

Jefferson.edu/skmc

SKMC.Admissions@jefferson.edu

Jefferson.edu/SKMCA admissions